

S O F T

2 0 2 4

B A L L

AUGUSTA SPORTSWEAR BRANDS



TIARE JENNINGS

All-American NCAA Champion

Tiare represents what ASB softball is all about: passion, commitment and excellence on the Diamond. Enjoy selecting from our best ever 2024 Softball collection.

Tiare Jennings #23

ASB

**RUSSELL
ATHLETIC**



LINE UP

- SOFTBALL JERSEY 6
- SOFTBALL PANTS..... 28
- OUTERWEAR 33
- HEADWEAR 42
- ACCESSORIES 46
- BAGS 48
- DECORATION 51

ICON KEY



Dry-Excel™
Moisture evaporation and wicking fabric



Water Resistant
Resists rain & water to keep the body protected & dry



Color Secure®
Color Secure® helps prevent dye migration



Moisture Management
Fabric wicks moisture away keeping the body cool & dry



4-Way Stretch
Stretch properties allow for increased mobility



Odor Resistant
Odor Resistant technology keeps garments fresher longer



UPF
Garment protects against harmful UV rays

NEW



228384

228372



756VTX



R16LSX



RS5DBX

ON F

OFF FIELD

SOFTBALL | NEW PRODUCTS



6970

FIELD



223730



R01DWM



Slider



LADIES FREESTYLE SUBLIMATED
FAUX FULL-BUTTON JERSEY

745VTX Ladies S-3XL MSRP 118.00
745VTG Girls S-XL MSRP 110.20

- 92% polyester/8% spandex engineered with ventilated stretch mesh for the ultimate combination of lightweight and breathability
- Garment protects against the sun with 20+ UPF
- Dri-Power® Moisture Wicking Technology
- Tag-free label
- Faux full button jersey
- Buttons spaced for easy embellishment
- Set-in sleeves
- Fishtail bottom



Shortstop



Lite Chevron



For available design lines visit augustasportswear.com/sublimation

6227



Back

Lite Chevron



LADIES FREESTYLE SUBLIMATED FULL-BUTTON JERSEY

R45VTX Ladies S-3XL MSRP 108.40
R45VTG Girls S-XL MSRP 107.40

- 92% polyester/8% spandex mesh
- Garment protects against the sun with 20+ UPF
- Dri-Power® Moisture Wicking Technology
- Tag-free label
- Buttons spaced for easy embellishment
- Set-in sleeves
- Contoured bottom



Strikeout

746LGX



Shortstop



SUM736
756VTX



All Over
746LGX



Back

Breaking Ball
756S2X



NEW

**LADIES FREESTYLE
SUBLIMATED TWO-BUTTON
PERFORMANCE MESH
JERSEY**

756VTX Ladies
S-3XL MSRP 87.20

- 92% polyester/8% spandex engineered with lightweight, breathable stretch fabric for comfort and mobility
- Garment protects against the sun with 15+ UPF
- Dri-Power® Moisture Wicking Technology
- Tag-free label
- Set-in sleeves
- Contoured bottom

**LADIES FREESTYLE
SUBLIMATED TWO-BUTTON
JERSEY**

756S2X Ladies
S-3XL MSRP 80.60

- 91% polyester/9% spandex engineered with lightweight, breathable stretch fabric for comfort and mobility



For available design lines visit
augustasportswear.com/sublimation



6223



Stars & Stripes



LADIES FREESTYLE SUBLIMATED
 TWO-BUTTON JERSEY

228332 Ladies S-3XL MSRP 64.60

228432 Girls S-XL MSRP 63.60

- Dry-Excel™ 100% polyester wicking smooth knit
- Garment protects against the sun with 50+ UPF
- Tag-free label
- Raglan sleeves
- Contoured bottom



Stinger



Fast Pitch



P500



Back

Fully Reversible

Stinger



LADIES FREESTYLE SUBLIMATED LIGHTWEIGHT REVERSIBLE V-NECK JERSEY

228371 Ladies S-3XL MSRP 66.00

- 5.2 ounce, lightweight 96% polyester/4% spandex single-ply reversible knit
- Garment protects against the sun with 50+ UPF
- Set-in sleeves

Fully Reversible



A-Stripe

Fully Reversible



Fast Pitch



746LGX



For available design lines visit
augustasportswear.com/sublimation



598V



A-Stripe



Fully Reversible



LADIES FREESTYLE SUBLIMATED REVERSIBLE V-NECK JERSEY

228334 Ladies S-3XL MSRP 66.60

- Dry-Excel™ 100% polyester single ply reversible closed hole mesh
- Garment protects against the sun with 50+ UPF
- Tear away label
- Set-in sleeves



Stinger



Fast Pitch



P500

Cycle
7D7VTX

Cycle
746LGX

Clubhouse
7D7S2X

738LGX



Back



NEW

LADIES FREESTYLE SUBLIMATED V-NECK PERFORMANCE MESH JERSEY

7D7VTX Ladies S-3XL MSRP 81.00

- 92% polyester/8% spandex engineered with lightweight, breathable stretch fabric for comfort and mobility
- Garment protects against the sun with 15+ UPF
- Dri-Power® Moisture Wicking Technology
- Outside locker label
- Raglan cap sleeves

LADIES FREESTYLE SUBLIMATED V-NECK JERSEY

7D7S2X Ladies S-3XL MSRP 75.00

- 91% polyester/9% spandex engineered with lightweight, breathable stretch fabric for comfort and mobility

Sublimation

For available design lines visit augustasportswear.com/sublimation



SOFTBALL | FREESTYLE SUBLIMATION



Back



NEW LADIES FREESTYLE SUBLIMATED TURBO COOLCORE® INTERLOCK V-NECK JERSEY

228384	Ladies	XS-3XL	MSRP 52.00
228484	Girls	S-XL	MSRP 51.00

- Dry-Excel™ 100% polyester Coolcore® interlock smooth knit
- Garment protects against the sun with 30+UPF
- Tag-free label
- Raglan sleeves

Shutout
228372



Shutout

Coolcore® is engineered to distribute moisture quickly throughout the garment. As the moisture spreads it dries faster to keep you cool and comfortable, and has UPF 50 sun protection.

Slider
7D6S2X



7S4DBX



Grand Slam



Breaking Ball



**FREESTYLE SUBLIMATED
SLEEVELESS JERSEY**

7D6S2X Ladies S-3XL MSRP 66.00

- 91% polyester/9% spandex engineered with lightweight, breathable stretch fabric for comfort and mobility
- Garment protects against the sun with 15+ UPF
- Dri-Power® Moisture Wicking Technology
- Tag-free label
- Scooped neck



For available design lines visit
augustasportswear.com/sublimation



Racerback



NEW

LADIES FREESTYLE SUBLIMATED
 TURBO LIGHTWEIGHT SLEEVELESS
 JERSEY

228370	Ladies	S-3XL	MSRP 34.00
228470	Girls	S-XL	MSRP 33.00

- Dry-Excel™ 100% polyester wicking knit
- Garment protects against the sun with 45+ UPF
- Tag-free label



LADIES FREESTYLE SUBLIMATED
PIN-DOT SLEEVELESS JERSEY

228354 Ladies S-3XL MSRP 56.00
228454 Girls S-XL MSRP 55.00

- Dry-Excel™ polyester Pin-Dot wicking mesh
- 100% polyester pinhole mesh back
- Garment protects against the sun with 50+ UPF
- Racerback styling
- Contoured bottom

A-Stripe



Classic
Color
Block

A Stripe



Classic
Color
Block



LADIES FREESTYLE SUBLIMATED
SHORT SLEEVE PIN-DOT JERSEY

228350 Ladies S-3XL MSRP 65.00
228450 Girls S-XL MSRP 64.00

- Dry-Excel™ polyester Pin-Dot wicking mesh front panel
- Garment protects against the sun with 50+ UPF
- Garment protects against the sun with 50+ UPF
- Set-in sleeves
- Contoured bottom



LADIES FREESTYLE SUBLIMATED SHORTS

228355 Ladies S-3XL MSRP 59.00
228455 Girls S-XL MSRP 58.00

- Dry-Excel™ polyester Pin-Dot wicking mesh
- Garment protects against the sun with 50+ UPF
- Covered elastic waistband with inside drawcord

Fast Pitch



Classic
Color
Block



LADIES FREESTYLE SUBLIMATED
TURBO LIGHTWEIGHT JERSEY

228335 Ladies S-3XL MSRP 58.00
228435 Girls S-XL MSRP 57.00

- Dry-Excel™ 100% polyester smooth wicking knit body
- 100% polyester pinhole mesh back
- Garment protects against the sun with 50+ UPF
- Tag-free label
- Set-in sleeves
- Contoured bottom



LADIES FREESTYLE SUBLIMATED
LIGHTWEIGHT SHORTS

228336 Ladies S-3XL MSRP 51.40
228436 Girls S-XL MSRP 50.40

- Dry-Excel™ 100% polyester smooth wicking knit body
- Garment protects against the sun with 50+ UPF
- Covered elastic waistband with inside drawcord



For available design lines visit
augustasportswear.com/sublimation



COORDINATING ADULT/YOUTH
6909 | 6910



Back



LADIES CUTTER+ FULL BUTTON JERSEY

6919	Ladies	XS-2XL	MSRP 30.00
6920	Girls	S-L	MSRP 29.00

- 96% polyester/4% spandex lightweight knit with color secure® technology that helps prevent dye migration
- Garment protects against the sun with 50+ UPF
- Micro-Interlock smooth 100% polyester knit side inserts
- Tear away label
- Buttons spaced for easy embellishment
- Set-in sleeves
- Dropped tail



BLACK/
WHITE
420

COLUMBIA BLUE/
WHITE
293

NAVY/
WHITE
301

PURPLE/
WHITE
450



ROYAL/
WHITE
280

SCARLET/
WHITE
408

WHITE
005



Back

6228

COORDINATING
ADULT/YOUTH
6905 | 6906



LADIES CUTTER+ HENLEY JERSEY

6917 Ladies XS-2XL MSRP 25.00
6918 Girls S-L MSRP 24.00

- 96% polyester/4% spandex lightweight knit with color secure® technology that helps prevent dye migration
- Garment protects against the sun with 50+ UPF
- Tear away label
- Raglan sleeves



BLACK/WHITE 420 COLUMBIA BLUE/WHITE 293 DARK GREEN/WHITE 438 MAROON/WHITE 380 NAVY/WHITE 301



PURPLE/WHITE 450 ROYAL/WHITE 280 SCARLET/WHITE 408 TEAL/WHITE 331 VEGAS GOLD/WHITE 250



WHITE/BLACK 226 WHITE/GRAPHITE 751 WHITE/NAVY 221 WHITE/ROYAL 220 WHITE/SCARLET 235



WHITE/SILVER E64



1298



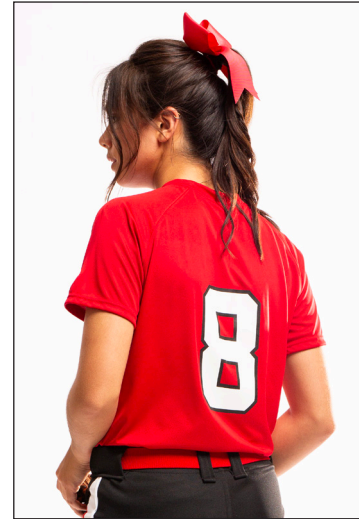
ATTAIN COLLECTION

6701



COORDINATING
ADULT/YOUTH

1565 | 1566



Back



LADIES ATTAIN TWO-BUTTON JERSEY

1567 Ladies XS-3XL MSRP 14.80

- 100% polyester wicking knit with color secure® technology that helps prevent dye migration
- Tear away label
- Raglan sleeves
- Longer length



BLACK 080	COLUMBIA BLUE 089	DARK GREEN 035	GOLD 025	GRAPHITE 059
--------------	-------------------------	----------------------	-------------	-----------------



KELLY 030	MAROON 745	NAVY 065	ORANGE 029	POWER BLUE 812
--------------	---------------	-------------	---------------	----------------------



PURPLE 747	RED 040	ROYAL 060	SILVER 099	WHITE 005
---------------	------------	--------------	---------------	--------------



6227

6701



Back

LADIES CLASSIC V-NECK JERSEY



- 100% polyester double knit with color secure® technology that helps prevent dye migration
- Dri-Power® Moisture Wicking Technology
- Tag-free label
- Outside locker label
- Raglan sleeves
- Contoured bottom

R01X3X Ladies S-2XL MSRP 31.80

COORDINATING ADULT/YOUTH

R01X3M | R01X3B



AQUA/BLACK/WHITE 09R

BURNT ORANGE/BLACK/WHITE 07R

COLUMBIA BLUE/NAVY/WHITE 614

GOLD/BLACK/WHITE 249

MAROON/STEEL/WHITE 08R

NAVY/TRUE RED/WHITE 04R

NAVY/STEEL/WHITE 06R

PURPLE/BLACK/WHITE 497

WHITE/TRUE RED/WHITE 03R

WHITE/NAVY/TRUE RED 10R

WHITE/BLACK/WHITE 132

WHITE/ROYAL/WHITE 137

223846



SOFTBALL | V-NECK



Front



LADIES FULL FORCE JERSEY

1682 Ladies S-2XL MSRP 28.40

- 100% polyester propelit micromesh wicking knit
- Tag-free label
- Double layer V-neck collar
- Set-in sleeves



BLACK/WHITE 420

NAVY/WHITE 301

ROYAL/WHITE 280



SCARLET/WHITE 408

WHITE/GRAPHITE 751



Back



COORDINATING
ADULT/YOUTH
6907 | 6908



LADIES CUTTER+ V-NECK JERSEY

6915 Ladies XS-2XL MSRP 20.00
6916 Girls S-L MSRP 19.00

- 96% polyester/4% spandex lightweight knit with color secure® technology that helps prevent dye migration
- Garment protects against the sun with 50+ UPF
- Tear away label
- Raglan sleeves





6701



COORDINATING ADULT/YOUTH

1517 | 1518



Available in Girls



LADIES CUTTER JERSEY

1522	Ladies	S-2XL	MSRP 16.40
1523	Girls	S-L	MSRP 15.40

- 100% polyester wicking knit with color secure® technology that helps prevent dye migration
- 92% polyester/8% spandex wicking pinhole mesh underarms
- Tag-free label
- Raglan sleeves
- Contoured bottom





6226



Back



LADIES CUTTER+
SLEEVELESS JERSEY

6913	Ladies	XS-2XL	MSRP 22.00
6914	Girls	S-L	MSRP 21.00

- 96% polyester/4% spandex lightweight knit with color secure® technology that helps prevent dye migration
- Garment protects against the sun with 50+ UPF
- Tear away label
- Contoured bottom



BLACK/WHITE 420
COLUMBIA BLUE/WHITE 293
DARK GREEN/WHITE 438



GRAPHITE/WHITE R04
NAVY/WHITE 301
PURPLE/WHITE 450



ROYAL/WHITE 280
SCARLET/WHITE 408
TEAL/WHITE 331
WHITE 005



1298



Back



LADIES DYNAMITE JERSEY

312162	Ladies	S-2XL	MSRP 26.80
312163	Girls	S-L	MSRP 25.80

- 92% polyester/8% spandex wicking pinhole mesh
- Tag-free label



ATHLETIC GOLD/ BLACK/ WHITE 657	BLACK/ BLACK/ WHITE 529	COL. BLUE/ BLACK/ WHITE 519	FOREST/ BLACK/ WHITE 148	MAROON/ BLACK/ WHITE 524	NAVY/ SILVER GREY/ WHITE 515	ORANGE/ BLACK/ WHITE 322	PURPLE/ BLACK/ WHITE 497	RASPBERRY/ BLACK/ WHITE 593	ROYAL/ BLACK/ WHITE 526	SCARLET/ BLACK/ WHITE 952	TEAL/ BLACK/ WHITE 332	WHITE/ BLACK/ WHITE 132
---	----------------------------------	--------------------------------------	-----------------------------------	-----------------------------------	---------------------------------------	-----------------------------------	-----------------------------------	--------------------------------------	----------------------------------	------------------------------------	---------------------------------	----------------------------------

6701



LADIES ROVER JERSEY

1687 Ladies S-2XL MSRP 25.00
1688 Girls S-L MSRP 24.00

- 100% polyester wicking smooth knit with color secure® technology on front and back panels that helps prevent dye migration
- 90% polyester/10% spandex wicking mesh back yoke and side inserts with color secure® technology
- Tag-free label



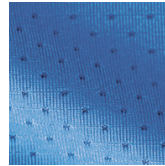
BLACK/WHITE 420
 COLUMBIA BLUE/WHITE 293
 DARK GREEN/WHITE 438
 GRAPHITE/WHITE R04
 NAVY/WHITE 301
 POWER PINK/WHITE 468



PURPLE/WHITE 450
 ROYAL/WHITE 280
 SCARLET/WHITE 408
 SILVER/WHITE 254
 TEAL/WHITE 331
 WHITE 005



Back



Pinhole mesh



LADIES TORNADO JERSEY

1355 Ladies S-2XL MSRP 25.80
1356 Girls S-L MSRP 24.80

- 92% polyester/8% spandex wicking pinhole mesh
- Tag-free label



BLACK/GOLD/WHITE 418
 COL. BLUE/NAVY/WHITE 614
 LIME/BLACK/WHITE 680
 NAVY/GOLD/WHITE 516
 ORANGE/BLACK/WHITE 322
 POWER PINK/BLACK/WHITE 456



PURPLE/WHITE 615
 POWER YELLOW/BLACK/WHITE 458
 RED/BLACK/WHITE 110
 ROYAL/RED/WHITE 115
 WHITE/BLACK/WHITE 132



LADIES SLEEVELESS ATTAIN JERSEY

4794 Ladies S-2XL MSRP 10.20
4795 Girls XS-L MSRP 9.20

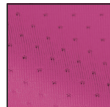
- 100% polyester wicking knit with color secure® technology that helps prevent dye migration
- Tear away label



NAVY 065 BLACK 080 COLUMBIA BLUE 089 SILVER 099 PURPLE 747 ELECTRIC PINK 80N



RED 040 ROYAL 060 WHITE 005 GOLD 025 ORANGE 029 DARK GREEN 035



Pinhole mesh



COORDINATING ADULT/YOUTH

1420 | 1421

LADIES INFERNO SHORTS



1292 Ladies S-2XL MSRP 20.20
1293 Girls S-L MSRP 19.20

- 92% polyester/8% spandex wicking pinhole mesh
- Tag-free label
- Covered elastic waistband with inside drawcord
- 5-inch inseam
- Girls inseam graded



BLACK 080 RED 040 ROYAL 060 COLUMBIA BLUE 089



NAVY 065 GRAPHITE 059 POWER PINK 809

LADIES OCTANE SHORTS



1423 Ladies S-2XL MSRP 8.40

- 100% polyester wicking knit
- Tag-free label
- Covered elastic waistband with inside drawcord
- 7-inch inseam



BLACK 080 DARK GREEN 035 GRAPHITE 059 MAROON 045* NAVY 065 RED 040 ROYAL 060 SILVER 099

*Maroon shades can vary by brand, please contact our Customer Care with questions.

LADIES FREESTYLE
SUBLIMATED KNICKER

746LGX Ladies S-3XL MSRP 85.00
746LGG Girls S-XL MSRP 84.00

- 12 ounce per linear yard, 100% polyester stretch double knit
- Branded silicone knitted elastic waistband with tunnel belt loops
- Two-snap closure
- Zipper fly
- Two set-in double welt back pockets with button closure
- Reinforced knees
- Elastic cuffs



Lite Chevron



Fast Pitch





For available design lines visit
augustasportswear.com/sublimation



P500

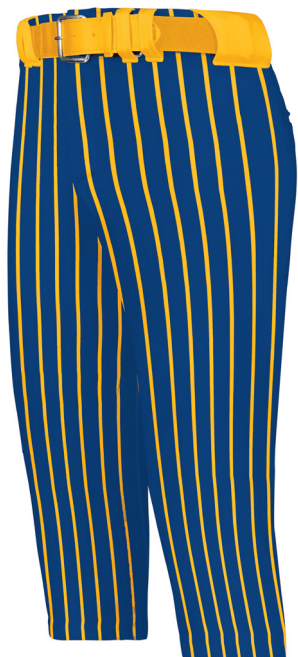
Windmill
 228350



LADIES FREESTYLE SUBLIMATED KNICKER

228372	Ladies	XS-3XL	MSRP 77.00
228472	Girls	S-XL	MSRP 76.00

- 16 ounce per linear yard, 100% polyester double knit with stain release
- Silicone knitted elastic waistband with tunnel belt loops
- Two-snap closure
- Zipper fly
- Two set-in double welt back pockets with button closure
- Reinforced knees
- Elastic cuffs



Pin Stripe

Windmill





4-Way stretch properties allow for increased mobility



NEW

LADIES FLEXSTRETCH SOFTBALL PANT WITH BELT LOOPS

R16LSX Ladies XS-2XL MSRP 50.00

- 13 ounce per linear yard, 87% polyester/13% spandex wicking knit with stain release
- Yoga pant fit
- Branded silicone knitted elastic waistband with tunnel belt loops
- Two-snap closure
- Zipper fly
- Two set-in double welt back pockets with button closure
- Reinforced knees
- Elastic cuffs

Yoga pant fit



BASEBALL GREY BG7

BLACK BLK

WHITE WHI

FLEXSTRETCH



LADIES SLIDEFLEX PANT

1297 Ladies
XS-3XL MSRP 42.00
1298 Girls
XS-L MSRP 41.00

- 16 ounce per linear yard, 100% polyester double knit
- Wicking stain release properties
- Mid rise, elastic waistband
- Tunnel belt loops
- Two-snap closure
- Zipper fly
- Two set-in double welt back pockets
- Reinforced knees
- Graded inseam
- Elastic cuffs



BLUE GREY 053 BLACK 080 GRAPHITE 059 NAVY 065 WHITE 005



NEW

LADIES ON DECK
SOFTBALL KNICKER

RS5DBX Ladies
XS-2XL MSRP 32.00
RS4DBG Girls
S-L MSRP 31.00

- 11 ounce per linear yard, 100% polyester stretch double knit with stain release
- Branded silicone knitted elastic waistband with tunnel belt loops
- Two-snap closure
- Zipper fly
- Two set-in double welt back pockets with button closure
- Reinforced knees
- Elastic cuffs



BASEBALL GREY BG7 BLACK BLK NAVY NAV WHITE WHI



NEW

LADIES GAMER CLASSIC PANT

6970 Ladies
XS-2XL MSRP 22.00
6971 Girls
S-L MSRP 21.00

- 12.5 ounce per linear yard, 100% polyester double-knit
- Elastic waistband
- Tunnel belt loops
- Two-snap closure
- Zipper fly
- Right back welt pocket
- Reinforced knees
- Elastic cuffs



BLUE GREY 053 BLACK 080 NAVY 065 WHITE 005



GAMER PULL-UP BASEBALL PANTS

NEW

6848 Adult S-XL MSRP 11.80
6849 Youth XXS-XL MSRP 10.80

- 12.7 ounce per linear yard, 100% polyester double-knit
- Elastic waistband with inside drawcord
- Faux fly
- Right back welt pocket
- Reinforced double knees
- Retail ticketing matchbook
- Graded inseam
- Elastic cuffs



GAMER PULL-UP BASEBALL PANTS WITH LOOPS

NEW

6850 Adult S-XL MSRP 13.80
6851 Youth XXS-XL MSRP 12.80

- 12.7 ounce per linear yard, 100% polyester double-knit
- Elastic waistband with inside drawcord
- Tunnel belt loops
- Faux fly
- Right back welt pocket
- Reinforced double knees
- Retail ticketing matchbook
- Graded inseam
- Elastic cuffs



BLACK
080

BLUE
GREY
053

WHITE
005



BLACK
080

BLUE
GREY
053

WHITE
005



HERITAGE JACKET

229140 Adult S-4XL MSRP 77.80
5XL in select colors

- Duraweav™ fabric has a smooth oxford nylon surface
- 100% polyester quilted lining
- 15mm matte painted enamel snap front
- Set-in sleeves
- Front pockets
- Inside valuables pocket
- Rib-trim collar, cuffs, and bottom hem

Snap Front



Available in 4XL-5XL



BLACK/
WHITE
420

NAVY/
WHITE
301

ROYAL/
WHITE
280

SCARLET/
WHITE
408

BLACK
080

NAVY
065



BLACK/
LT GOLD/
WHITE
R21

BLACK/
SCARLET/
WHITE
R20

DARK
GREEN/
LT GOLD/
WHITE
S06

MAROON/
WHITE
380

BLACK/
ORANGE/
WHITE
611

NAVY/
LT GOLD/
WHITE
S30



SATIN BASEBALL JACKET/STRIPED TRIM

3610 Adult XS-3XL MSRP 54.20

- Outer shell of 100% nylon satin
- Lined with 100% polyester brushed tricot
- Raglan sleeves
- Front pockets
- Rib-knit collar, cuffs and bottom



COLUMBIA
BLUE/
WHITE
293

LIGHT
PINK/
WHITE
465

METALLIC
GOLD/
WHITE
259

METALLIC
SILVER/
WHITE
260

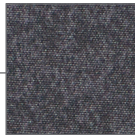


BLACK/
WHITE
420

RED/
WHITE
400

ROYAL/
WHITE
280

NAVY/
WHITE
301



Tech Print Pattern

Sleeve pocket with silver media port & silicone welded zipper

Divided Front Pouch Pocket

Spandex-Bound Cuffs



RAIDER PULLOVER

229155 Adult XS-3XL MSRP 66.00
4XL in select colors

- Ultra-lightweight Aero-Tec™ fabric provides both weather protection and zero noise, without the bulk
- Set-in sleeves



CARBON PRINT/FOREST H69

CARBON PRINT/MAROON H06

CARBON PRINT/ORANGE H07

CARBON PRINT/PURPLE H68

CARBON PRINT/WHITE H04

Available in Adult 4XL



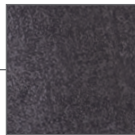
CARBON PRINT/BLACK H05

CARBON PRINT/GRAPHITE H60

CARBON PRINT/NAVY H03

CARBON PRINT/ROYAL H02

CARBON PRINT/SCARLET H01



Tech Print Pattern

Sleeve pocket with silver media port & silicone welded zipper

Divided Front Pouch Pocket



RAIDER PULLOVER SHORT SLEEVE

229545 Adult S-3XL MSRP 60.60
4XL in select colors

- Ultra-lightweight Aero-Tec™ fabric provides both weather protection and zero noise, without the bulk
- Set-in sleeves

Available in Adult 4XL



CARBON PRINT/BLACK H05

CARBON PRINT/NAVY H03

CARBON PRINT/ROYAL H02

CARBON PRINT/SCARLET H01

CARBON PRINT/WHITE H04



CARBON PRINT/FOREST H69

CARBON PRINT/GRAPHITE H60

CARBON PRINT/MAROON H06

CARBON PRINT/ORANGE H07

CARBON PRINT/PURPLE H68



SHORT SLEEVE PULLOVER

872RVM Adult S-3XL MSRP 52.20
872RVB Youth S-XL MSRP 51.20

- 100% polyester lightweight breathability fabric
- Dri-Power® Moisture Wicking Technology
- Raglan sleeves
- Adjustable bottom hem with hidden shockcord closure (on Adult only)

Colors Available in Youth



Embossed pattern



BIONIC WINDSHIRT

229019 Adult S-3XL MSRP 60.20

- Micron™ polyester is a lightweight, wind/water resistant fabric
- Sleeves and arms are embossed with the Screenmesh print
- Jersey and taffeta lining for added warmth
- Raglan sleeves
- Front pockets
- Elastic cuffs
- Open bottom with adjustable elastic hidden drawcord





Jacket folds up into zippered front pocket



RANGE PACKABLE PULLOVER

229554 Adult S-3XL MSRP 48.00
4XL in select colors

229654 Youth S-XL MSRP 47.00
Select Colors

- Tech weave printed Micron™ lightweight polyester, wind/water resistant fabric
- Adjustable 3 piece hood with eyelets and concealed cord locks on Adult only (elastic on youth)
- Raglan sleeves
- Half-elastic cuffs
- Adjustable bottom hem with hidden shockcord closure on right side of pocket (on Adult only)



MICRO POLY WINDSHIRT/LINED

3415 Adult S-4XL MSRP 29.40

- Outer shell of 100% micro polyester
- Lined with 100% polyester taffeta
- Rib-knit V-neck collar, cuffs and bottom band
- Set-in sleeves
- Side seam pockets





Embossed Pattern



SERIESX PULLOVER

- 229533** Adult XS-3XL MSRP 59.60
4XL in select colors
- 229633** Youth S-XL MSRP 58.60
- 229733** Ladies XS-2XL MSRP 59.60

- Micron™ polyester is a lightweight, wind/water-resistant fabric
- Micromesh lined nylon body
- Taffeta lined sleeves
- Set-in sleeves
- Front pockets
- Spandex bound cuffs
- Dropped tail with side vents
- Alternate pant: 229531 | 229631 | 229731, 229095

Ladies Fit

Side seam zipper for easy on/off

Available in 4XL, Ladies & Youth

Available in Adult & Ladies



BLACK 080

CARBON 096

WHITE 005



NAVY 065

ROYAL 060

SCARLET 083



BLACK/ ORANGE 423

BLACK/ SCARLET 500



CARDINAL 036

CARBON/ GOLD 43M

COLUMBIA BLUE 089

DARK GREEN 035

KELLY 030

MAROON 045

NAVY/ GOLD 302

NAVY/ SCARLET S20

PURPLE 050



Back



Side zipper



CLUBHOUSE PULLOVER

229595 Adult S-3XL MSRP 48.80
229695 Youth S-XL MSRP 47.80

- Areo-Tec 100% polyester
- Low profile collar
- Set-in sleeves
- Side seam pockets
- Spandex bound cuffs
- Side zipper for easy on/off



BLACK/
BLACK
425

BLACK/
ORANGE
423

BLACK/
WHITE
420

DARK GREEN/
WHITE
438

GRAPHITE/
WHITE
R04

NAVY/
NAVY
S14

NAVY/
SCARLET
S20

NAVY/
WHITE
301

ROYAL/
WHITE
280

SCARLET/
WHITE
408

WHITE/
GRAPHITE
751



Side seam zipper for easy on/off



Stretch mesh at center back for maximum mobility



CLUBHOUSE SHORT SLEEVE PULLOVER

229581 Adult
S-4XL MSRP 44.80

5XL in select colors

229681 Youth
S-XL MSRP 43.80

- Areo-Tec 100% polyester
- Low profile collar
- Set-in sleeves
- Side seam pockets

Available in 5XL



BLACK/
WHITE
420

GRAPHITE/
WHITE
R04

NAVY/
WHITE
301

WHITE/
GRAPHITE
751



ROYAL/
WHITE
280

SCARLET/
WHITE
408

DARK
GREEN/
WHITE
438



MAROON/
WHITE
380

BLACK/
ORANGE
423

NAVY/
SCARLET
S20





NEW

CROSTOWN JACKET

223530	Adult	S-3XL	MSRP 42.00
223630	Youth	S-XL	MSRP 41.00
223730	Ladies	S-2XL	MSRP 42.00

- Dry-Excel™ 100% polyester double-knit
- Dry-Excel™ 100% polyester mesh inserts
- Ladies' fit on style 223730
- Woven label
- Front zipper
- Set-in sleeves
- Front zippered pockets
- Open bottom



BLACK/ BLACK 425	BLACK/ WHITE 420	GRAPHITE/ WHITE R04	NAVY/ WHITE 301	ROYAL/ WHITE 280	SCARLET/ WHITE 408	WHITE/ BLACK 226
------------------------	------------------------	---------------------------	-----------------------	------------------------	--------------------------	------------------------



PACKABLE FULL ZIP JACKET

229582	Adult	S-4XL	MSRP 49.00
229782	Ladies	XS-3XL	MSRP 49.00

- Micron™ polyester is a lightweight, wind/water-resistant fabric
- Ladies' fit on style 229782
- Adjustable hood with inside concealed cord locks
- Reflective trim
- Back vent with adjustable closure for full decoration access
- Set-in sleeves
- Front zippered pockets
- Spandex bound cuffs
- Open bottom
- Adjustable elastic hidden drawcord at bottom hem (Adult only)



Zippered pocket on wearer's left sleeve



Hidden drawcord at waist on Ladies



ATHLETIC GREY 009	BLACK 080	CARBON J96	DARK GREEN 035	MAROON 745	NAVY 065	PURPLE 747
-------------------------	--------------	---------------	----------------------	---------------	-------------	---------------

[Available in Adult only]



ROYAL 060	SCARLET 083	OLIVE 039
--------------	----------------	--------------



Jacket folds into zippered pocket



POTOMAC JACKET

229527 Adult S-3XL MSRP 82.40

- Micro-Cord™ woven polyester fabric with a raised, ribbed texture
- Micromesh lined body and sleeves
- Concealed adjustable hood with eyelets and concealed cord locks stows when not in use
- Back vent with adjustable closure for full decoration access
- Front zippered pockets
- Dual inside pockets
- Rib-knit collar and cuffs
- Open bottom with adjustable elastic hidden drawcord (on Adult)
- Dropped tail



BLACK 080 CARBON 096 NAVY 065 BLACK/GOLD 421 BLACK/ORANGE 423 BLACK/SCARLET 500 BLACK/WHITE 420 CARBON/WHITE F52



DARK GREEN/WHITE 438 MAROON/WHITE 380 NAVY/GOLD 302 NAVY/SCARLET 520 NAVY/WHITE 301 ROYAL/WHITE 280 SCARLET/WHITE 408



Back



CORE
color choice



60/40 FLEECE HOODIE

5414 Adult S-5XL MSRP 32.80

5415 Youth S-L MSRP 31.80

- 9 ounce 60% cotton/40% polyester athletic fleece
- Tear away label
- Jersey lined hood with flat braid drawcord (on Adult only)
- Set-in sleeves
- Front pouch pocket
- Rib-knit cuffs and bottom band



CARBON HEATHER E83 BLACK 080 CARDINAL J36 CHARCOAL HEATHER 017 COLUMBIA BLUE 089 DARK GREEN 035 GOLD 025



GRAPHITE 059 KELLY 030 LIME 096 MAROON 045 NAVY 065 ORANGE 029 POWER BLUE 812



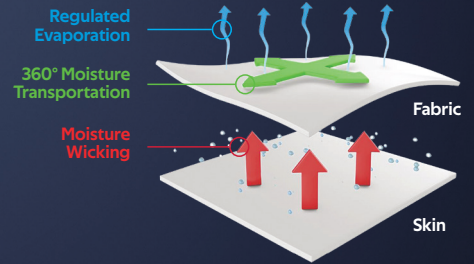
POWER PINK 809 POWER YELLOW 810 PURPLE 050 RED 040 ROYAL 060 VEGAS GOLD 023 WHITE 005



Coolcore® is engineered to distribute moisture quickly throughout the garment.

As the moisture spreads it dries faster to keep you cool and comfortable.

Patented Fabric Technology



Back

PERFORATED COOLCORE® VISOR

P500 Adult One Size MSRP 17.00

- 96% polyester/4% spandex tech twill
- Mesh sweatband
- with Coolcore® technology
- 2-inch crown
- Curved visor
- Contrast color undervisor
- Hook-and-loop adjustable
- Perforated side panels with contrast color underlay





Back

LITE SERIES ALL-SPORT ACTIVE VISOR

510V Adult One Size MSRP 15.40

- 100% polyester lightweight "Ghost" performance fabric
- 2-inch crown
- Curved visor
- Gray undervisor
- Hook-and-loop adjustable



BLACK 080

BLACK/ GRAPHITE R17

BLACK/ WHITE 420

BLACK/ ROYAL 426

BLACK/ ORANGE 423

BLACK/ RED 424

WHITE 005

WHITE/ DK GREEN 232

WHITE/ MAROON 224

WHITE/ GRAPHITE 751

WHITE/ BLACK 226

WHITE/ NAVY 221

WHITE/ RED 225

WHITE/ ROYAL 220



Back



M2 PERFORMANCE HOOK-AND-LOOP VISOR

598V Adult One Size MSRP 15.20

- M2 Performance
- Stain-resistant
- 2-inch crown
- Curved visor
- Self-material undervisor
- Pro-stitched finish
- Hook-and-loop adjustable



BLACK 080

NAVY 065

DK GREEN 035

ROYAL 060

RED 040

WHITE 005

SILVER 099



ADJUSTABLE WICKING MESH TWO-COLOR VISOR

6260 Adult One Size MSRP 11.00

- 100% polyester
- Curved visor
- Hook-and-loop adjustable



BLACK/
WHITE
420

RED/
WHITE
400

ROYAL/
WHITE
280

NAVY/
WHITE
301



ATHLETIC MESH VISOR

6227 Adult One Size MSRP 8.40

6228 Youth One Size MSRP 8.40

- 100% polyester athletic mesh with tricot backing
- Curved visor
- Sweatband folds down for easy embellishment
- Hook-and-loop adjustable

Available in Adult & Youth

Available in Adult only



BLACK
080

WHITE
005

RED
040

ROYAL
060

COLUMBIA
BLUE
089

NAVY
065

SILVER
GREY
016

POWER
PINK
809

MAROON
045

GOLD
025

PURPLE
050

KELLY
030

DARK
GREEN
035

LIME
096



ATHLETIC MESH TWO-COLOR VISOR

6223 Adult One Size MSRP 8.40

- 100% polyester athletic mesh with tricot backing
- Curved visor
- Sweatband folds down for easy embellishment
- Hook-and-loop adjustable



BLACK/
WHITE
420

RED/
WHITE
400

ROYAL/
WHITE
280

NAVY/
WHITE
301

NAVY/
RED
307



SPORT TWILL VISOR

6225 Adult One Size MSRP 8.00

6226 Youth One Size MSRP 8.00

- 100% cotton twill
- Curved visor
- Sweatband folds down for easy embellishment
- Hook-and-loop adjustable



Mini Chevron



Water Color
Camo



**FREESTYLE SUBLIMATED
HEADBAND WITH TIE**

228015 One Size MSRP 16.40

- Dry-Excel™ 84% polyester/16% spandex single-ply knit
- Adjustable lightweight head tie for a personalized fit
- 4" front, 1.5" back
- Sold in minimum packs of 12 pc per color



Marble



FREESTYLE SUBLIMATED HEADBAND

228016 One Size MSRP 18.40

- Dry-Excel™ 84% polyester/16% spandex single-ply knit
- 4" front, 1.5" back
- Sold in minimum packs of 12 pc per color

Spike





ZOOM TIE BACK HEADBAND

223846 2" x 34" MSRP 14.20

- Dry-Excel™ 86% polyester/14% spandex knit
- Adjustable lightweight head tie for a personalized fit



CHEER HAIR BOW

6701 One Size MSRP 11.40

- Solid grosgrain bow
- Decoratable grosgrain ribbon
- 3" x 7.5" with 5.5" tail
- 1" elastic hairband





NEW

DIAMOND GEAR BACKPACK

R01DWM 13"W x 21"H x 7"D MSRP 58.00

- 600-denier polyester with PVC coating
- Matte PVC bottom for durability
- Zippered top pocket lined with brushed interior for valuables/ small devices
- Two front webbing loops for additional clips, securing safety gear
- Full length side bat sleeves (size to fit up to 2 5/8" bat)
- Inside zippered mesh pocket
- Collapsible shelf for glove
- Padded back for support and comfort
- Adjustable padded shoulder straps with adjustable sternum strap



BLACK
BLK



NAVY
NAV



ROYAL
ROY



STEALTH
SHL



TRUE RED
TRR



THE ULTIMATE SOFTBALL GEAR BAG



Web handle at top of backpack with fence clip with hidden pocket to store away when not in use



Top zippered opening with collapsible shelf for glove



Front zippered pocket for batting gloves etc.



Hook and loop strip closure for batting gloves



Large dual entry main interior compartment with two zipper pulls



Two mesh side water bottle pockets

Front helmet flap with adjustable straps



NEW

CORE MULTI-SPORT SOCKS

6922 Large (10-13)
Medium (9-11)
Small (7-9)
X-Small (5-7)
MSRP 4.40

- 95% polyester/5% rubber
- Knee-length tube sock



ELITE MULTI-SPORT SOCK

6006 Large (10-13)
Medium (9-11)
Small (7-9)
MSRP 10.20

- 75% acrylic/15% polyester/4% spandex/4% elastic/2% nylon
- Knee length
- Lightweight microfiber yarns offer support while remaining soft to the touch



WICKING ATHLETIC SOCK

6085 Large (10-13)
Medium (9-11)
Small (7-9)
MSRP 10.40

- 70% lucool wicking polyester/13% nylon/12% elastic/5% spandex
- Knee-length tube sock

GAME SOCK

6020 Large (10-13)
Medium (9-11)
Small (7-9)
MSRP 7.00

- 91% nylon/5% polyester/4% elastic
- Tube sock, slightly below the knee



BLACK 080



VEGAS GOLD 023 BLACK 080 WHITE 005 RED 040 ROYAL 060 COLUMBIA BLUE 089



BLACK 080 WHITE 005 RED 040 ROYAL 060 NAVY 065



BLACK 080 RED 040 ROYAL 060 NAVY 065 ORANGE 029



NAVY 065 ORANGE 029 GOLD 025 PURPLE 747 DARK GREEN 035 LIME 096



MAROON 045 GOLD 025 PURPLE 050 KELLY 030 DARK GREEN 035



MAROON 045 GOLD 025 PURPLE 050 KELLY 030 DARK GREEN 035



POWER YELLOW 810 GRAPHITE 059 KELLY 030 MAROON 045 CARDINAL 336 POWER PINK 809



TEAL 063 WHITE 005



Screen Print



3D Embroidery



Applique



Embroidery



Tonal Etch

flexstyle



Heat Transfer



Sublimated Patch

Flat Embroidery

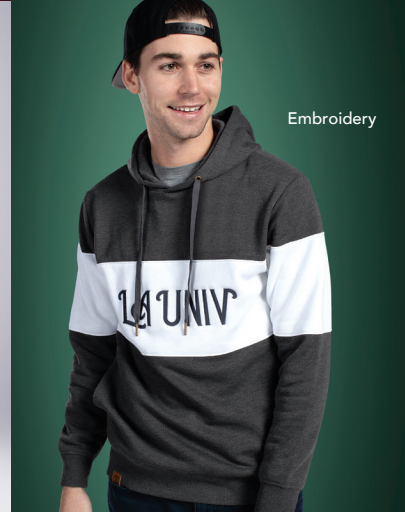


Heat Transfer

Genuine Leather Patch



Embroidery



WE HAVE THE TECHNIQUES FOR YOUR CUSTOMIZATION & DECORATION

For our full list of decoration techniques, pricing & access to our complete library of stock templates for both apparel & headwear, visit augustasportswear.com/decoration



Screen Print



Faux Leather Patch

ASB



www.augustasportswear.com