

SOCCER 2024



**HIGH
FIVE**

ASB 2024

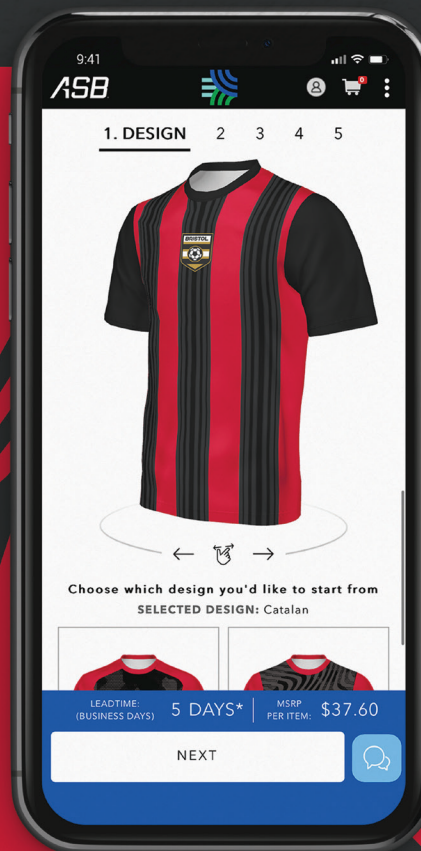
YOUR KIT YOUR WAY



 **FreeStyle™**
SUBLIMATION



**Go Full
Custom**
**or Go Fast
with Turbo**





Featuring
coolcore®
ELITE



LINE UP

CoolCore® Elite	7
FreeStyle Sublimation	11
Stock Jerseys	15
Shorts	30
Ladies CoolCore® Elite	33
Ladies FreeStyle Sublimation	37
Ladies Stock Jerseys	39
Warm-Ups	43
Socks	49
Bags	50
Compression	52
Training	54
ASB Kit Packages	62

ICONS

color secure®

color secure® technology
helps prevent dye migration



Dry-Excel™

Moisture evaporation
and wicking fabric



Moisture Management

Fabric wicks moisture away
keeping the body cool & dry



Odor Resistant

Odor Resistant technology
keeps garments fresher longer



4-Way Stretch

Stretch properties allow
for increased mobility



UPF

Garment protects
against harmful UV rays



Water Resistant

Resists rain & water to keep
the body protected & dry



A young man with dark skin and curly hair is in a ready position on a soccer field. He is wearing a white short-sleeved jersey with blue horizontal stripes and a blue V-neck collar. The jersey features a crest on the left chest that says 'WAYCROSS' above a shield with a soccer ball. He is also wearing dark blue shorts with a light blue waistband. He is looking off to the side with a focused expression. The background is a dark blue field with a large, faint white number '5' and some circular light patterns.

STAY
MATCH
DAY
COOL



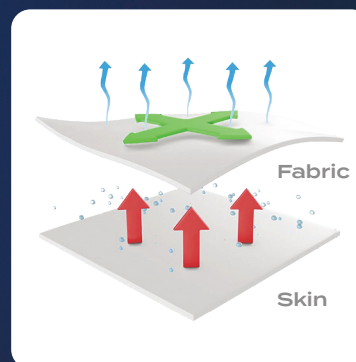
Coolcore® is engineered to distribute moisture quickly throughout the garment.

As the moisture spreads it dries faster to keep you cool and comfortable all match long while providing UPF 50 sun protection.

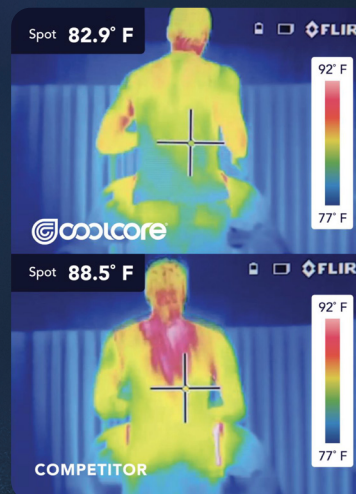
Regulated
Evaporation

360° Moisture
Transportation

Moisture
Wicking



Patented Fabric
Technology



Technology Comparison

The same athlete after
20 minutes of activity

Explore
coolcore®
Elite



321550
pg. 7



321555
pg. 9



321560
pg. 9



325460
pg. 7



321552
pg. 33



321557
pg. 35



321562
pg. 35



325462
pg. 33



321550
Elite Horizontal



321550
Elite Lightning

325460

321560
pg. 9
Elite Block

FREESTYLE SUBLIMATED ELITE JERSEY

321550 Adult S-2XL
321551 Youth XXS-L

- 87% polyester/13% spandex with Coolcore® technology
- 92% polyester/8% spandex mesh shoulder & back inserts with Coolcore® technology
- Garment protects against the sun with 50+ UPF
- Tag-free label
- Two piece collar
- Set-in sleeves

COORDINATING LADIES | **321552** pg. 33



Faded Chevron



Goal Kick



COORDINATING LADIES | **325462** pg. 33

PLAY90 COOLCORE® SHORTS

325460 Adult S-3XL
325461 Youth S-XL

- 88% polyester/12% elastane Coolcore® with color secure® technology that helps prevent dye migration
- Garment protects against the sun with 50+ UPF
- Tag-free label
- Covered elastic waistband with inside drawcord
- 7-inch inseam
- Youth inseam graded



BLACK
080

GRAPHITE
059

NAVY
065

ROYAL
060

WHITE
005

SCARLET
083



321550
Elite
Vertical

325460





321555
Elite Horizontal*

321555
Elite Block



◀ *Perfect for
Goalkeeper
Option*

321560
Elite Block

321560
Elite Block



For available design lines visit
augustasportswear.ca/sublimation

NEW

FREESTYLE SUBLIMATED ELITE LONG SLEEVE JERSEY

321555	Adult	S-2XL
321556	Youth	XXS-L

- 87% polyester/13% spandex with Coolcore® technology
- 92% polyester/8% spandex mesh shoulder & back inserts with Coolcore® technology
- Garment protects against the sun with 50+ UPF
- Tag-free label
- Two piece collar
- Set-in sleeves

COORDINATING LADIES | **321557** pg. 35



Optic



Gradient



FREESTYLE SUBLIMATED ELITE 7" SHORTS

321560	Adult	S-2XL
321561	Youth	XXS-L

- 87% polyester/13% spandex with Coolcore® technology
- Garment protects against the sun with 50+ UPF
- Tag-free label
- Covered elastic waistband with inside drawcord
- 7-inch inseam
- Youth inseam graded

COORDINATING LADIES | **321562** pg. 35



Optic Stripe



Faded Chevron

321555
Elite
Block



321560
Elite
Block





FULLY
REVERSIBLE



321530
**Clean
Sheet**



For available design lines visit
augustasportswear.ca/sublimation



FREESTYLE SUBLIMATED REVERSIBLE V-NECK JERSEY

321530 Adult S-2XL

321531 Youth S-L

- 100% polyester single ply reversible closed hole mesh
- Garment protects against the sun with 50+ UPF
- Tear away label
- Set-in sleeves



Whirlwind



Optic



Peru



Center Stripe Fade

321520
**Faded
Chevron**

321810
**Faded
Chevron**



321510
Catalan

321810
**Twin
Stripe**





For available design lines visit
augustasportswear.ca/sublimation



FREESTYLE SUBLIMATED TURBO V-NECK JERSEY

321520 Adult S-2XL
322520 Youth S-L

- 100% polyester wicking knit
- Garment protects against the sun with 50+ UPF
- Tag-free label
- Raglan sleeves



Clean Sheet



Whirlwind



Optic



FREESTYLE SUBLIMATED TURBO CREW NECK SOCCER JERSEY

321510 Adult S-2XL
322510 Youth S-XL

- 100% polyester wicking knit
- Garment protects against the sun with 50+ UPF
- Tag-free label
- Set-in sleeves



Center Stripe Fade



Clean Sheet



Gradient



FREESTYLE SUBLIMATED TURBO SOCCER SHORTS

321810 Adult S-2XL
326810 Youth S-L

- 100% polyester wicking smooth knit
- Garment protects against the sun with 50+ UPF
- Tag-free label
- Covered elastic waistband with inside drawcord
- 7-inch inseam
- Youth inseam graded



Center Stripe Fade



Clean Sheet



Optic Stripe



NEW





Back



MADRID JERSEY

NEW

322240 Adult S-2XL
322241 Youth XXS-L

- 100% polyester wicking knit with color secure® technology that helps prevent dye migration
- Tag-free label
- Low profile tapered collar
- Raglan sleeves



BLACK/WHITE 420
COLUMBIA BLUE/WHITE 293
DK GREEN/LIME 838
DK GREEN/WHITE 438
ELECTRIC YELLOW/BLACK 78N



LIME/WHITE 693
MAROON/POWER PINK 829
MAROON/WHITE 245
NAVY/POWER BLUE 888
ORANGE/WHITE 320



POWER BLUE/WHITE 834
POWER PINK/WHITE 468
PURPLE/WHITE 450
ROYAL/GOLD 281
ROYAL/WHITE 280



SCARLET/BLACK 406
SILVER/BLACK 098
TEAL/WHITE 331
VEGAS GOLD/WHITE 250
WHITE/BLACK 226





Back

COORDINATING LADIES | **322992** pg. 39



NEW

HAWK EVOLUTION JERSEY

322990 Adult S-3XL
322991 Youth S-XL

- 100% polyester wicking knit with color secure® technology that helps prevent dye migration
- 90% polyester/10% spandex wicking mesh inserts with color secure® technology
- Tag-free label
- Low profile tapered collar
- Raglan sleeves
- Side vent detail



BLACK/WHITE 420
 COL BLUE/BLACK 292
 DK GREEN/WHITE 438
 GOLD/WHITE 245
 GRAPHITE/WHITE R04



KELLY/BLACK 342
 MAROON/WHITE 380
 NAVY/LIME 666
 NAVY/WHITE 301
 ORANGE/WHITE 320



POWER BLUE/WHITE 834
 POWER ORANGE/BLACK Y59
 POWER YELLOW/BLACK 457
 PURPLE/WHITE 450
 ROYAL/GOLD 281



ROYAL/WHITE 280
 SCARLET/WHITE 408
 SILVER/BLACK 098
 WHITE 005
 TEAL/BLACK 435





Back



SHEFFIELD JERSEY

322970 Adult S-3XL
322971 Youth XXS-L

- 100% polyester wicking knit with color secure® technology that helps prevent dye migration
- Tag-free label
- Raglan sleeves



BLACK/
WHITE
420

COLUMBIA
BLUE/
WHITE
293

DARK
GREEN/
WHITE
438

ELECTRIC
ORANGE/
BLACK
81N

ELECTRIC
YELLOW/
BLACK
78N



GRAPHITE/
WHITE
R04

KELLY/
BLACK
342

LIME/
BLACK
530

MAROON/
WHITE
380

NAVY/
LIME
66G



NAVY/
WHITE
301

ORANGE/
WHITE
320

PURPLE/
WHITE
450

POWER
BLUE/
BLACK
818

ROYAL/
GOLD
281



ROYAL/
WHITE
280

SCARLET/
BLACK
406

SCARLET/
WHITE
408

WHITE
005

VEGAS
GOLD/
BLACK
252





WEMBLEY JERSEY

322930 Adult S-2XL

322931 Youth XS-L

- 100% polyester wicking knit with color secure® technology that helps prevent dye migration
- Tag-free label
- Two piece collar
- Set-in sleeves



ATHLETIC
GOLD/
WHITE/
BLACK
661

BLACK/
GRAPHITE/
WHITE
489

COLUMBIA
BLUE/
WHITE/
NAVY
533

FOREST/
BLACK/
WHITE
148

GRAPHITE/
BLACK/
WHITE
U73

KELLY/
WHITE/
BLACK
609



LIME/
WHITE/
BLACK
652

LIME/
WHITE/
NAVY
694

MAROON/
WHITE/
BLACK
162

NAVY/
WHITE/
GRAPHITE
372

ORANGE/
BLACK/
WHITE
322

POWER
BLUE/
BLACK/
WHITE
837



POWER
YELLOW/
BLACK/
WHITE
458

PURPLE/
BLACK/
WHITE
497

ROYAL/
WHITE/
BLACK
Y80

ROYAL/
WHITE/
BLACK
150

SCARLET/
WHITE/
BLACK
588

SCARLET/
NAVY/
WHITE
656



WHITE/
BLACK/
GRAPHITE
X26

VEGAS
GOLD/
WHITE/
BLACK
605



COORDINATING LADIES/GIRLS | 6915/6916 pg. 40



CUTTER+ V-NECK JERSEY

6907 Adult S-3XL
6908 Youth S-XL

- 96% polyester/4% spandex lightweight knit with color secure® technology that helps prevent dye migration
- Garment protects against the sun with 50+ UPF
- Tearaway label
- Raglan sleeves



Back



BLACK/ GOLD 421
BLACK/ SCARLET 500
BLACK/ WHITE 420
COLUMBIA BLUE/ WHITE 293
DARK GREEN/ WHITE 438
GOLD/ WHITE 245



GRAPHITE/ WHITE R04
LIME/ ROYAL O3W
MAROON/ WHITE 380
NAVY/ SCARLET S20
NAVY/ WHITE 301
ORANGE/ BLACK 321



ORANGE/ WHITE 320
PURPLE/ WHITE 450
ROYAL/ SCARLET W81
ROYAL/ WHITE 280
SCARLET/ BLACK 406
SCARLET/ WHITE 408



VEGAS GOLD/ BLACK 252
WHITE/ BLACK 226
WHITE/ NAVY 221
WHITE/ ROYAL 220
WHITE/ SCARLET 235



COORDINATING LADIES/GIRLS | 1522/1523 pg. 41



CUTTER JERSEY

1517	Adult	S-3XL
1518	Youth	XXS-XL

- 100% polyester wicking knit with color secure® technology that helps prevent dye migration
- 92% polyester/8% spandex wicking pinhole mesh underarms
- Tag-free label
- Raglan sleeves
- Longer length



Back



WHITE/ROYAL 220
DARK GREEN/WHITE 438
COLUMBIA BLUE/NAVY 294
KELLY/BLACK 342
POWER YELLOW/BLACK 457
ATHLETIC GOLD/WHITE 596
LIME/WHITE 693



POWER BLUE/WHITE 834
POWER ORANGE/BLACK Y59
GRAPHITE/WHITE R04
BLACK/GOLD 421
BLACK/WHITE 420
MAROON/WHITE 380
NAVY/WHITE 301



ORANGE/WHITE 320
PURPLE/WHITE 450
RED/BLACK 407
RED/WHITE 400
ROYAL/ORANGE 284
ROYAL/WHITE 280
VEGAS GOLD/WHITE 250



WHITE/BLACK 226
WHITE/NAVY 221
WHITE/RED 225
WHITE/WHITE 230

NFHS WHITE OPTION

THE SOLID WHITE JERSEY IS NFHS AWAY TEAM UNIFORM COMPLIANT WHEN PAIRED WITH ANY WHITE SOCK





Back



HYPERVOLT JERSEY

322980 Adult S-2XL
322981 Youth XS-L

- 100% polyester wicking smooth knit
- Roller printed to reduce chance of dye migration
- Tag-free label
- Low profile tapered collar
- Raglan sleeves



ATHLETIC
GOLD
PRINT/
BLACK
73E

BLACK PRINT/
WHITE
66E

COLUMBIA
BLUE
PRINT/
BLACK
79E

GRAPHITE
PRINT/
WHITE
D62

KELLY PRINT/
BLACK
72E



LIME PRINT/
NAVY
78E

MAROON
PRINT/
BLACK
74E

NAVY PRINT/
WHITE
67E

POWER PINK
PRINT/
WHITE
81E

POWER
YELLOW
PRINT/
BLACK
84E



PURPLE
PRINT/
WHITE
68E

ROYAL
PRINT/
BLACK
71E

SCARLET
PRINT/
BLACK
70E

VEGAS GOLD
PRINT/
BLACK
76E

WHITE
PRINT/
BLACK
69E



Back



SHORT SLEEVE MESH REVERSIBLE JERSEY

1602	Adult	S-2XL
1603	Youth	XXS-XL

- Two layers of 100% polyester sports mesh body with color secure® technology that helps prevent dye migration
- 100% polyester wicking smooth knit collar with color secure® technology
- Tear away label
- Fully reversible for wearing on either side
- Set-in sleeves
- Each layer hemmed separately for easy embellishment



BLACK/
SCARLET
500

BLACK/
WHITE
420

DARK
GREEN/
WHITE
438

KELLY/
WHITE
340



MAROON/
WHITE
380

NAVY/
WHITE
301

ORANGE/
WHITE
320



ROYAL/
GOLD
281

ROYAL/
WHITE
280

SCARLET/
WHITE
408

1851



Back



GENESIS JERSEY

322730 Adult S-2XL

322731 Youth XXS-L

- 100% polyester wicking knit
- Tag-free label



ORANGE/
WHITE
320

PURPLE/
WHITE
450

RASPBERRY/
WHITE
514

ROYAL/
WHITE
280



SCARLET/
WHITE
408

SILVER
GREY/BLACK
470

TEAL/
WHITE
331

WHITE/
BLACK
226



ATHLETIC
GOLD/WHITE
596

BLACK/
WHITE
420

COLUMBIA
BLUE/WHITE
293

FOREST/
WHITE
436



KELLY/
WHITE
340

LIME/
WHITE
693

MAROON/
WHITE
380

NAVY/
WHITE
301



7-inch
inseam
(Youth
inseam
graded)

5-inch
inseam



Ladies Fit



7-inch
inseam
(Youth
inseam
graded)

7-inch
inseam

Ladies Fit



NEW

PLAY90 COOLCORE® SHORTS

325460	Adult	S-3XL
325461	Youth	S-XL
325462	Ladies	XS-2XL

- 88% polyester/12% elastane Coolcore® with color secure® technology that helps prevent dye migration
- Garment protects against the sun with 50+ UPF
- Tag-free label
- Covered elastic waistband with inside drawcord



BLACK
O80

GRAPHITE
O59

NAVY
O65

ROYAL
O60

SCARLET
O83

WHITE
O05



OCTANE SHORTS

1425	Adult	S-3XL
1426	Youth	XXS-L
1423	Ladies	S-2XL

- 100% polyester wicking knit
- Full-cut
- Tag-free label
- Covered elastic waistband with inside drawcord



BLACK
O80

DARK
GREEN
O35

GRAPHITE
O59

MAROON *
O45

NAVY
O65

RED
O40

ROYAL
O60

AVAILABLE IN ADULT/YOUTH ONLY

AVAILABLE IN LADIES ONLY



COLUMBIA
BLUE
O89

GOLD
O25

KELLY
O30

ORANGE
O29

PURPLE *
O50

SILVER
GREY
O16

SILVER
O99

* Maroon & Purple shades can vary by brand, please contact our Customer Care with questions



6-inch
inseam



NEW

PRIMO 2.0 SHORTS

325934 Adult S-2XL

- 100% polyester wicking knit
- 100% Coolmax™ lining on white
- Tag-free label
- Covered elastic waistband



BLACK
080



NAVY
065



ROYAL
060



SCARLET
083



WHITE
005



7-inch
inseam
(Youth
inseam
graded)



PRIMO SHORTS

325390 Adult S-2XL

325391 Youth XXS-L

- 100% polyester wicking knit
- 100% Coolmax™ lining on white
- Tag-free label
- Covered elastic waistband with inside drawcord



BLACK
080



NAVY
065



ROYAL
060



SCARLET
083



WHITE
005



321552
Elite Horizontal

321562
pg. 35
Elite Block



321552
Elite Horizontal

325462



For available design lines visit
augustasportswear.ca/sublimation

LADIES FREESTYLE SUBLIMATED ELITE JERSEY

321552 Ladies XS-2XL

- 87% polyester/13% spandex with Coolcore® technology
- 92% polyester/8% spandex mesh shoulder & back inserts with Coolcore® technology
- Garment protects against the sun with 50+ UPF
- Tag-free label
- Two piece collar
- Set-in sleeves

COORDINATING ADULT/YOUTH
321550/321551 pg. 7



Peru



Corner Kick



COORDINATING ADULT/YOUTH
325460/325461 pg. 7

LADIES PLAY90 COOLCORE® SHORTS

325462 Ladies XS-2XL

- 88% polyester/12% elastane Coolcore® with color secure® technology that helps prevent dye migration
- Garment protects against the sun with 50+ UPF
- Tag-free label
- Covered elastic waistband with inside drawcord
- 5-inch inseam



BLACK
080

GRAPHITE
059

NAVY
065

ROYAL
060

WHITE
005

SCARLET
083



321552
Elite
Vertical

325462





321557
Elite Vertical

325462
pg. 33



321557
Elite Horizontal

321562
Elite Block



For available design lines visit
augustasportswear.ca/sublimation



FreeStyle
SUBLIMATION



NEW

LADIES FREESTYLE SUBLIMATED ELITE LONG SLEEVE JERSEY

321557 Ladies XS-2XL

- 87% polyester/13% spandex with Coolcore® technology
- 92% polyester/8% spandex mesh shoulder & back inserts with Coolcore® technology
- Garment protects against the sun with 50+ UPF
- Tag-free label
- Two piece collar
- Set-in sleeves

COORDINATING ADULT/YOUTH
321555/321556 pg. 9



Gradient



Elite Block



FreeStyle
SUBLIMATION



LADIES FREESTYLE SUBLIMATED ELITE 5" SHORTS

321562 Ladies XS-2XL

- 87% polyester/13% spandex elastane with Coolcore® technology
- Garment protects against the sun with 50+ UPF
- Tag-free label
- Covered elastic waistband with inside drawcord
- 5-inch inseam

COORDINATING ADULT/YOUTH
321560/321561 pg. 9



Optic Stripe



Z Stripe



321557
**Elite
Lightning**

321562
Elite Block



321522
Diamond
Fade

321812
Diamond
Fade



321522
Peru

321812
Twin
Stripe





For available design lines visit
augustasportswear.ca/sublimation



LADIES FREESTYLE TURBO SUBLIMATED V-NECK JERSEY

321522 Ladies S-2XL

- 100% polyester smooth wicking knit
- Garment protects against the sun with 50+ UPF
- Tag-free label
- Raglan sleeves



Catalan



Z-Stripe



Optic



Clean Sheet



Whirlwind



Center Stripe



LADIES FREESTYLE TURBO SUBLIMATED SHORTS

321812 Ladies S-2XL

- 100% polyester wicking smooth knit
- Garment protects against the sun with 50+ UPF
- Tag-free label
- Covered elastic waistband with inside drawcord
- 5-inch inseam



Clean Sheet



Whirlwind



Center Stripe



COORDINATING ADULT/YOUTH
322990/322991 pg. 17



LADIES HAWK EVOLUTION JERSEY

322992 Ladies XS-2XL

- 100% polyester wicking knit with color secure® technology that helps prevent dye migration
- 90% polyester/10% spandex wicking mesh inserts with color secure® technology
- Tag-free label
- Low profile tapered collar
- Raglan sleeves
- Side vent detail



BLACK/
WHITE
420

COL BLUE/
BLACK
292

DK GREEN/
WHITE
438

GOLD/
WHITE
245

GRAPHITE/
WHITE
R04



KELLY/
BLACK
342

MAROON/
WHITE
380

NAVY/
LIME
666

NAVY/
WHITE
301

ORANGE/
WHITE
320



POWER
BLUE/
WHITE
834

POWER
ORANGE/
BLACK
Y59

POWER
YELLOW/
BLACK
457

PURPLE/
WHITE
450

ROYAL/
GOLD
281



ROYAL/
WHITE
280

SCARLET/
WHITE
408

SILVER/
BLACK
098

WHITE
005

TEAL/
BLACK
435



Back





COORDINATING ADULT/YOUTH
6907/6908 pg. 23



LADIES CUTTER+ V-NECK JERSEY

6915 Ladies XS-2XL

6916 Girls S-L

- 96% polyester/4% spandex lightweight knit with color secure® technology that helps prevent dye migration
- Garment protects against the sun with 50+ UPF
- Tearaway label
- Raglan sleeves



BLACK/
WHITE
420

COLUMBIA
BLUE/
WHITE
293

DARK
GREEN/
WHITE
438

GOLD/
WHITE
245

GRAPHITE/
WHITE
R04

LIME/
ROYAL
O3W



MAROON/
WHITE
380

NAVY/
WHITE
301

ORANGE/
WHITE
320

PURPLE/
WHITE
450

ROYAL/
WHITE
280

SCARLET/
WHITE
408



TEAL/
WHITE
331

VEGAS
GOLD/
WHITE
250

WHITE/
BLACK
226

WHITE/
ROYAL
220

WHITE/
SCARLET
235

WHITE
005



CUTTER



COORDINATING ADULT/YOUTH
1517/1518 pg. 25



LADIES CUTTER JERSEY

1522 Ladies S-2XL
1523 Girls S-L

- 100% polyester wicking knit with color secure® technology that helps prevent dye migration
- 92% polyester/8% spandex wicking pinhole mesh underarms
- Tag-free label
- Raglan sleeves
- Contoured bottom



BLACK/
GOLD
421

BLACK/
WHITE
420

DARK
GREEN/
WHITE
438

MAROON/
WHITE
380

NAVY/
WHITE
301

ORANGE/
WHITE
320



POWER
PINK/
WHITE
468

PURPLE/
WHITE
450

ROYAL/
ORANGE
284

ROYAL/
WHITE
280

RED/
BLACK
407

RED/
WHITE
400



VEGAS
GOLD/
WHITE
250

WHITE/
BLACK
226

WHITE/
NAVY
221

WHITE/
RED
225

WHITE/
ROYAL
220



229579

229431

229580

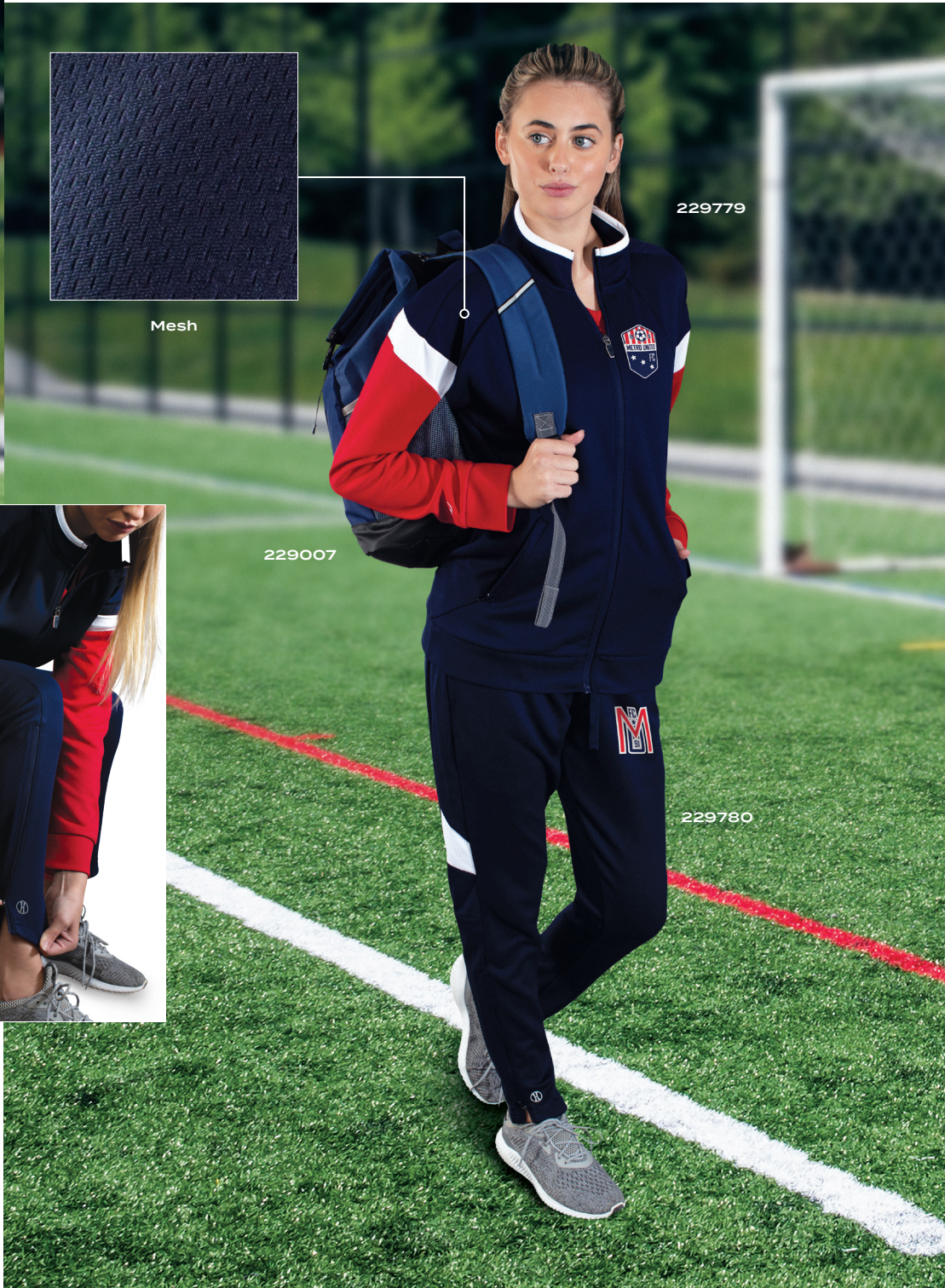
COORDINATING HOODIE
222584



Zippered leg



Mesh



229779

229007

229780



Ladies Fit


Zipper on
Outside
Lower Leg


LIMITLESS JACKET

229579	Adult	S-3XL
229679	Youth	S-XL
229779	Ladies	XS-2XL

- Dry-Excel™ 100% polyester wicking double knit with mesh texture
- Ladies' fit on 229779
- Raglan sleeves
- Front zippered pockets



BLACK/WHITE 420 NAVY/WHITE 301 CARBON/WHITE F52 ROYAL/WHITE 280 SCARLET/WHITE 408 BLACK/BLACK 425 MAROON/WHITE 380



DARK GREEN/WHITE 438 BLACK/WHITE/GOLD 532 NAVY/WHITE/GOLD W57 BLACK/WHITE/ORANGE W12 BLACK/WHITE/SCARLET C39 NAVY/WHITE/SCARLET W53



LIMITLESS PANT

229580	Adult	S-3XL
229680	Youth	S-XL
229780	Ladies	XS-2XL

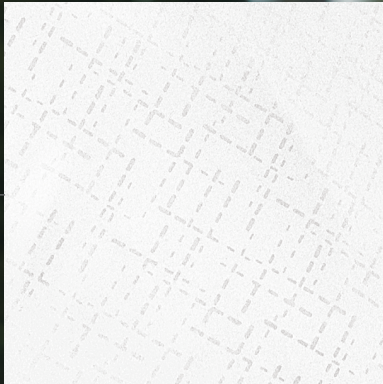
- Dry-Excel™ 100% polyester wicking double knit mesh texture
- Pinhole micromesh back knee inserts
- Ladies' fit on 229780
- Covered elastic waistband with inside drawcord
- Side seam pockets
- Tapered leg
- Zipper on outside lower leg



BLACK/BLACK 425 BLACK/WHITE 420 CARBON/WHITE F52 DARK GREEN/WHITE 438 MAROON/WHITE 380 NAVY/WHITE 301 ROYAL/WHITE 280 SCARLET/WHITE 408



COORDINATING PULLOVER
229533/229633/229733



Embossed Pattern Insert





Ladies Fit



Zipper on
Outside
Lower Leg



SERIESX HOODED JACKET

229528	Adult	S-3XL
229628	Youth	S-XL
229728	Ladies	XS-2XL

- Micron™ polyester is a lightweight, wind/water-resistant fabric
- 100% polyester micromesh lining
- Ladies' fit on 229728
- 3-piece hood with spandex binding
- Set-in sleeves
- Front zippered pockets
- Elastic cuffs
- Adjustable bottom hem with hidden shockcord closure in right pocket on Adult
- Alternate pants: 229095



SERIESX PANT

229531	Adult	S-3XL
229631	Youth	S-XL
229731	Ladies	XS-2XL

- Micron™ polyester is a lightweight, wind/water-resistant fabric
- 100% polyester micromesh lining
- Ladies' fit on 229731
- Exposed brushed elastic waistband with inside drawcord
- Side seam pockets
- Tapered leg
- Articulated seaming at the knees
- Covered elastic cuff at leg opening
- Zipper on outside lower leg



Back Welt
Pocket



RETRO COLLECTION



Ladies Fit



Zipper on
Outside
Lower Leg



RETRO GRADE JACKET

229561	Adult	S-3XL
229661	Youth	S-XL
229761	Ladies	XS-2XL

- Dry-Excel™ 100% polyester performance terry
- Ladies' fit on style 229761
- 3-piece mesh lined hood with spandex binding
- Raglan sleeves
- Front pockets
- Spandex bound cuff

AVAILABLE IN ADULT & LADIES ONLY



BLACK/
ORANGE
423

BLACK/
SCARLET
500

BLACK/
WHITE
420

GRAPHITE/
WHITE
R04

PURPLE/
WHITE
450

FOREST/
WHITE
436

MAROON/
WHITE
380



NAVY/
SCARLET
S20

NAVY/
WHITE
301

ROYAL/
WHITE
280

SCARLET/
WHITE
408



RETRO GRADE PANT

229562	Adult	S-3XL
229662	Youth	S-XL
229762	Ladies	XS-2XL

- Dry-Excel™ 100% polyester performance terry
- Ladies' fit on style 229762
- Exposed brushed elastic waistband with inside drawcord
- Front pockets
- Back welt pocket
- Tapered leg

AVAILABLE IN ADULT & LADIES ONLY



BLACK/
WHITE
420

NAVY/
WHITE
301

ROYAL/
WHITE
280

GRAPHITE/
WHITE
R04

SCARLET/
WHITE
408

PURPLE/
WHITE
450

FOREST/
WHITE
436

MAROON/
WHITE
380



Ladies Fit



Zipper on
Outside
Lower Leg



NEW

CROSTOWN JACKET

223530	Adult	S-3XL
223630	Youth	S-L
223730	Ladies	S-2XL

- Dry-Excel™ 100% polyester double-knit
- Dry-Excel™ 100% polyester mesh inserts
- Ladies' fit on style 223730
- Set-in sleeves
- Front zippered pockets
- Open bottom
- Dropped tail



BLACK/
BLACK
425

BLACK/
WHITE
420

GRAPHITE/
WHITE
R04

NAVY/
WHITE
301

ROYAL/
WHITE
280

SCARLET/
WHITE
408

WHITE/
BLACK
226



NEW

CROSTOWN PANT

223531	Adult	S-3XL
223631	Youth	S-L
223731	Ladies	S-2XL

- Dry-Excel™ 100% polyester double-knit
- Dry-Excel™ 100% polyester mesh inserts
- Ladies' fit on style 222731
- Covered elastic waistband with inside drawcord
- Side seam pockets
- Tapered leg



BLACK/
BLACK
425

BLACK/
WHITE
420

GRAPHITE/
WHITE
R04

NAVY/
WHITE
301

ROYAL/
WHITE
280

SCARLET/
WHITE
408

WHITE/
BLACK
226



MEDALIST 2.0 COLLECTION

COORDINATING PULLOVER
4386/4388



Ladies Fit



Zipper on
Outside
Lower Leg

MEDALIST JACKET 2.0

4395	Adult	S-3XL
4396	Youth	XS-L
4397	Ladies	XS-2XL

- Heavyweight 100% polyester matte brushed tricot
- Ladies' fit on style 4397
- Heat sealed label
- Set-in sleeves
- Front seam pockets
- Self-fabric cuffs
- Alternate pants 7726/7728, 7731/7732/7733



BLACK/
GOLD
421

BLACK/
ORANGE
423

BLACK/
RED
424

BLACK/
VEGAS
GOLD
255

BLACK/
WHITE
420

DARK
GREEN/
WHITE
438

GRAPHITE/
WHITE
R04



KELLY/
WHITE
340

MAROON/
WHITE
380

NAVY/
VEGAS
GOLD
256

NAVY/
WHITE
301

PURPLE/
WHITE
450

RED/
WHITE
400

ROYAL/
WHITE
280

MEDALIST PANT 2.0

7760	Adult	S-3XL
7761	Youth	XS-L
7762	Ladies	XS-2XL

- Heavyweight 100% polyester matte brushed tricot
- Ladies' fit on style 7762
- Heat sealed label
- Covered elastic waistband with inside drawcord
- Side seam pockets



Back Yoke



BLACK/
GOLD
421

BLACK/
ORANGE
423

BLACK/
RED
424

BLACK/
WHITE
420

DARK
GREEN/
WHITE
438

GRAPHITE/
WHITE
R04

KELLY/
WHITE
340

MAROON/
WHITE
380

NAVY/
VEGAS
GOLD
256

NAVY/
WHITE
301

PURPLE/
WHITE
450

RED/
WHITE
400

ROYAL/
WHITE
280

AVAILABLE
IN ADULT &
LADIES ONLY

BLACK/
VEGAS
GOLD
255



Back



Heal/Toe Construction



Back



Uncuffed

Heal/Toe Construction



IMPACT+

NEW

IMPACT+ CHILL SOCCER SOCKS



329130 Large (10-13)
Medium (9-11)
Small (7-9)

- Made from Repreve® 93% recycled polyester/ 6% rubber/1% other fibers
- Soil-release properties
- Knee-length sock with fold-down cuff
- Extra cushioning and support in areas of the foot and ankle that are susceptible to rubbing, impact or injury
- Arch compression reduces fatigue and aids circulation
- Left and right sock construction for a better fit



BLACK/ GRAPHITE R17 DK GREEN/ BLACK 444 GRPHITE/ BLACK 172 MAROON/ BLACK 388 NAVY/ GRAPHITE S21 ROYAL/ BLACK 269 SCARLET/ BLACK 406 WHITE/ BLACK 226

IMPACT+

IMPACT+ SOCCER SOCKS



329120 Large (10-13)
Adult Medium (9-11)
Small (7-9)

- 85% nylon/7% polyester/5% rubber/3% spandex
- Knee-length sock with fold-down cuff
- Extra cushioning and support in areas of the foot and ankle that are susceptible to rubbing, impact or injury
- Arch compression reduces fatigue and aids circulation



BLACK/ WHITE/ GRAPHITE 355 DARK GREEN/ WHITE/ GRAPHITE 192 GRPHITE/ WHITE/ BLACK 196 KELLY/ WHITE/ GRAPHITE 65E MAROON/ WHITE/ GRAPHITE 392 NAVY/ WHITE/ GRAPHITE 372 ROYAL/ WHITE/ GRAPHITE 191 ROYAL/ ATHLETIC GOLD/ GRAPHITE 64E SCARLET/ WHITE/ GRAPHITE G14 WHITE 005

SOCCER SOCKS

6031 Large (10-13)
Medium (9-11)
Small (7-9)

- 80% acrylic/15% nylon/5% elastic
- Knee-length tube sock with fold-down cuff
- Fully cushioned foot



BLACK 080 GOLD 025 KELLY 030 NAVY 065 ORANGE 029 PURPLE 050 RED 040 ROYAL 060 WHITE 005

NEW

CORE MULTI-SPORT SOCKS

6922 Large (10-13)
Medium (9-11)
Small (7-9)
X-Small (5-7)

- 95% polyester/15% rubber
- Knee-length tube sock



BLACK 080



Inside divider for shoes or damp items



Mesh ball holder fits volleyball, soccer or basketballs



Without mesh ball holder

Mesh ball holder fits volleyball, soccer or basketballs, & stashes away when not in use



Reinforced multiuse side pockets with pass-thru strap for bat or lacrosse stick



FREE FORM BACKPACK

327895 13" W x 19" H x 9"D

- 900-denier heavyweight 100% polyester with PU coating
- Matte PVC bottom and sides for durability
- Large main compartment for easy decoration
- Zippered pocket with brushed interior for valuables
- Two mesh side pockets
- Smooth finish top handle for comfort
- Padded back & shoulder straps
- Hidden key clip
- Internal zippered mesh valuables pocket



BLACK
O80



CARBON
HEATHER
E83



GRAPHITE
O59



NAVY
O65



ROYAL
O60



SCARLET
O83



ALL SPORT BACKPACK

327890 12"W x 18.5"H x 7"D

- 100% polyester heavy denier
- Large main interior compartment
- Front zipper pocket with deep, interior pouch holds shoes or accessories
- Side pouch pockets for water bottle with pass-thru for lacrosse stick or bat



BLACK/
GRAPHITE/
BLACK
Q92



GRAPHITE/
GRAPHITE/
BLACK
Q83



FOREST/
GRAPHITE/
BLACK
Q88



MAROON/
GRAPHITE/
BLACK
Q89



NAVY/
GRAPHITE/
BLACK
Q93



ORANGE/
GRAPHITE/
BLACK
Q90



PURPLE/
GRAPHITE/
BLACK
Q91



ROYAL/
GRAPHITE/
BLACK
Q84



SCARLET/
GRAPHITE/
BLACK
Q86



NEW

UNITED BACKPACK

327930 11.5"W x 19"H x 9.5"D

- 600-denier polyester with PVC coating
- 210-denier nylon with PVC coating
- Large main interior compartment with two corded zipper pulls
- Large front ventilated compartment with two corded zipper pulls
- Zippered pocket with brushed interior for valuables
- Front pocket with corded zipper pull with hidden inside mesh ball holder that fits Volleyball, Soccer or Basketballs
- Two mesh side pockets
- Adjustable buckles on sides to secure baseball bat
- Internal zippered mesh valuables pocket
- Key clip inside main compartment
- Padded back for support and comfort
- Web handle at top of backpack
- Adjustable padded shoulder straps



BLACK
080

GRAPHITE/
BLACK
172

NAVY/
BLACK
308



PLAYER BACKPACK

327850 18"W x 17"H x 9"D

- Heavy duty 600-denier polyester with soft PVC backing
- Adjustable padded shoulder straps
- Hand strap



ATHLETIC
GOLD/
BLACK/
WHITE
657

BLACK/
BLACK/
WHITE
420

FOREST/
BLACK/
WHITE
148

GRAPHITE/
BLACK/
WHITE
U73

MAROON/
BLACK/
WHITE
524



NAVY/
BLACK/
WHITE
311

ORANGE/
BLACK/
WHITE
322

PURPLE/
BLACK/
WHITE
497

ROYAL/
BLACK/
WHITE
526

SCARLET/
BLACK/
WHITE
952

Mesh paneled
zippered
interior ball
compartment

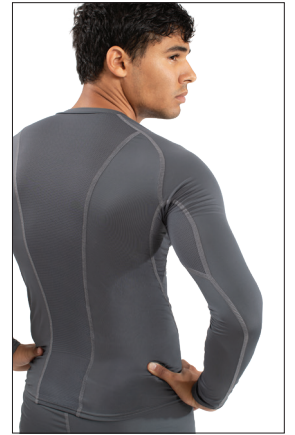
Mesh ball
holder fits
volleyball,
soccer or
basketballs



Two zippered side
compartments
with mesh panels



Back



Back





COOLCORE® LONG SLEEVE COMPRESSION TEE



R20CPM Adult S-3XL

- 84% polyester/16% spandex elastane Xtreme compression cloth with Coolcore® technology
- 92% polyester/8% elastane stretch mesh inserts with Coolcore® technology
- Garment protects against the sun with 50+ UPF
- Tag-free label
- Raglan sleeves



COOLCORE® HALF SLEEVE COMPRESSION TEE



R21CPM Adult S-3XL

- 84% polyester/16% spandex elastane Xtreme compression cloth with Coolcore® technology
- 92% polyester/8% elastane stretch mesh insert on center back and underarm
- Garment protects against the sun with 50+ UPF
- Tag-free label
- Raglan sleeves
- Dropped tail



COOLCORE® COMPRESSION 7/8 TIGHT



R23CPM Adult XS-3XL

- 86% polyester/14% spandex elastane Xtreme compression cloth with Coolcore® technology
- 92% polyester/8% elastane stretch mesh insert at back of knee and gusset
- Garment protects against the sun with 50+ UPF
- Ultra tight fit
- Tag-free label
- Branded soft brushed back exposed elastic waistband provides comfort







MOMENTUM TEAM COLLECTION



MOMENTUM TEAM TEE

223501	Adult	S-3XL 4XL-6XL in select colors
223601	Youth	XXS-XL
223701	Ladies	S-3XL

- Dry-Excel™ 100% polyester interlock smooth knit with color secure® technology that helps prevent dye migration
- Ladies' Fit on style 223701
- Tag-free label
- Contrast color V-neck on Ladies
- Garment protects against the sun with 45+ UPF
- Set-in sleeves





NEW

COOLCORE® ESSENTIAL TEE

222136	Adult	S-3XL
222236	Youth	S-XL
222336	Ladies	XS-2XL

- 88% polyester/12% elastane Coolcore® with color secure® technology that helps prevent dye migration
- Garment protects against the sun with 50+ UPF
- Tag-free label
- Crew neck
- Set-in sleeves with rolled forward shoulder seam



ATHLETIC
GREY
009

BLACK
080

COL BLUE
089

DK GREEN
035



IRON
98D

MAROON
745

NAVY
065

OLIVE
039



PURPLE
747

ROYAL
060

SCARLET
083

WHITE
005



Non-branded
tagless label



NEXGEN WICKING TEE

790 Adult S-3XL
4XL in select colors

791 Youth XS-XL

1790 Ladies XS-3XL

- 100% polyester wicking knit with color secure® technology that helps prevent dye migration
- Ladies' fit on style 1790
- Non-branded tag-free label
- Set-in sleeves
- Safety Yellow is ANSI certified

AVAILABLE IN ADULT 4XL



BLACK 080 NAVY 065 ROYAL 060 SCARLET 083 SILVER 099 WHITE 005

AVAILABLE IN ADULT & YOUTH ONLY



OLIVE 039 TEAL 063 ELECTRIC ORANGE 79N VEGAS GOLD 023

AVAILABLE IN ADULT ONLY



COYOTE 208



COLUMBIA BLUE 089 DARK GREEN 035 GOLD 025 GRAPHITE 059 KELLY 030 MAROON 745

AVAILABLE IN ADULT & LADIES ONLY



ORANGE 029 POWER BLUE 812 POWER PINK 809 PURPLE 747 SAFETY YELLOW* 243

*SAFETY YELLOW IS ANSI CERTIFIED



MOMENTUM COLLECTION



MOMENTUM TEE

222818	Adult	S-4XL 5XL & 6XL in select colors
222819	Youth	XXS-XL
222820	Ladies	S-3XL

- Dry-Excel™ 100% polyester interlock smooth knit with color secure® technology that helps prevent dye migration
- Ladies' fit on 222820
- Tag-free label
- Garment protects against the sun with 45+ UPF
- Set-in sleeves





6-inch
inseam
(Youth
inseam
graded)

5-inch
inseam

Ladies Fit



NEW

MOMENTUM SHORTS

223522	Adult	S-3XL
223622	Youth	S-XL
223722	Ladies	S-3XL

- Dry-Excel™ 100% polyester interlock smooth knit with color secure® technology that helps prevent dye migration
- Garment protects against the sun with 45+ UPF
- Tag-free label
- 2-inch brushed back elastic waistband with inside drawcord
- Side seam pockets
- Side vents



BLACK
080

GRAPHITE
059

NAVY
065

ROYAL
060

SCARLET
083

SILVER
099





SCRIMMAGE VEST

321200	Adult	One Size
321201	Youth	XS
321201	Youth	One Size

- 100% polyester tricot mesh
- Improved fit, longer length



BLACK
080



NAVY
065



WHITE
005



ATHLETIC
GOLD
595



LIME
096



ROYAL
060



SCARLET
083



OCTANE SHORTS

1425	Adult	S-3XL
1426	Youth	XXS-L

- 100% polyester wicking knit
- Full-cut
- Tag-free label
- Covered elastic waistband with inside drawcord
- 7-inch inseam
- Youth inseam graded



BLACK
080



RED
040



ROYAL
060



COLUMBIA
BLUE
089



NAVY
065



ORANGE
029



MAROON *
045



GOLD
025



PURPLE *
050



KELLY
030



DARK
GREEN
035



SILVER
GREY
016



GRAPHITE
059

* MAROON & PURPLE SHADES CAN VARY BY BRAND, PLEASE
CONTACT OUR CUSTOMER CARE WITH QUESTIONS



ASB KIT PACKAGES



CUTTER
PACKAGE



HAWK EVOLUTION
PACKAGE



From Youth, Ladies to Adult featuring a full spectrum of colors & sizes ready to ship.

Ask your local sales rep for details



WEMBLEY
PACKAGE



SHEFFIELD
PACKAGE



**HIGH
FIVE** 

AUGUSTA
SPORTSWEAR BRANDS
augustasportswear.ca