

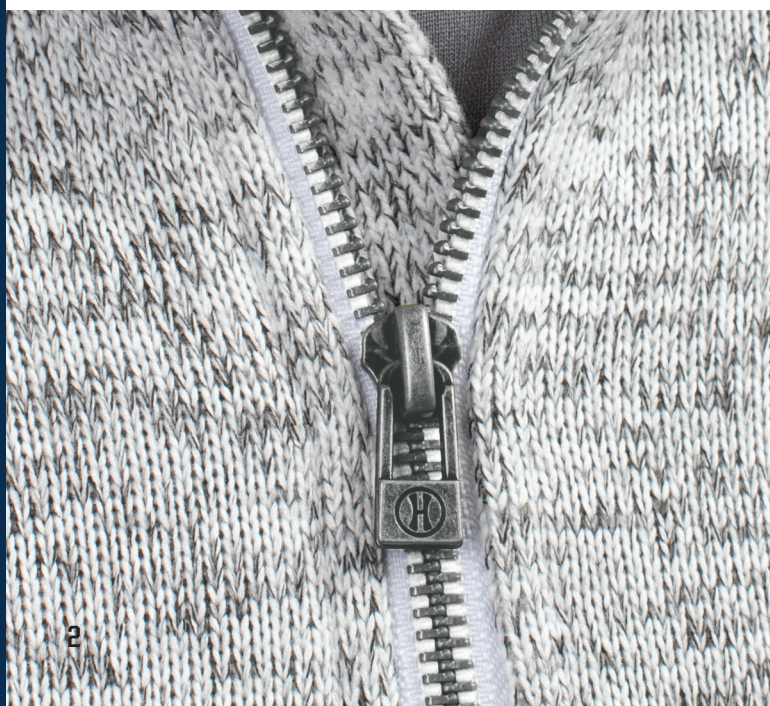






# HOLLOWAY

EST. 1946











Back



**NEW**

## LEGEND TECH FLEECE HOODIE

**R23TFM** Adult S-4XL MSRP 80.00

- 66% cotton/34% polyester tech fleece
- 100% polyester, water-resistant shoulders, hood and back yoke
- 3-piece jersey lined hood with drawcord
- Weld tape accent at shoulders and back yoke
- Set-in sleeves
- Front zippered valuables pocket with weld tape accent
- Front pouch pocket
- Spandex bound cuffs and bottom



BLACK  
BLK

NAVY  
NAV

STEALTH  
SHL

WHITE/  
GRIDIRON SILVER  
A9B



Zippered leg pocket



Zippered back pocket



**NEW**

## LEGEND PANT

**R23SWM** Adult XS-4XL MSRP 56.00  
\*4XL in Black only

- 90% polyester/10% spandex lightweight stretch woven fabric with durable water-resistant finish to keep you dry
- Heat sealed label
- Elastic waistband with inside drawcord
- Side seam pockets
- Welt zippered pocket on wearer's left leg
- Back zippered pocket with zipper garage



BLACK  
BLK

KHAKI  
O10

NAVY  
NAV

STEALTH  
SHL

R23SWM





R20SWM



Back



NEW

## LEGEND SHORT SLEEVE TECH FLEECE HOODIE

**R24TFM** Adult S-4XL MSRP 72.00

- 66% cotton/34% polyester tech fleece
- 3-piece jersey lined hood with drawcord
- Raglan sleeves
- Front zippered valuables pocket with weld tape accent
- Front pouch pocket
- Dropped tail with side vents



BLACK  
BLK

NAVY  
NAV

STEALTH  
SHL

WHITE/  
GRIDIRON SILVER  
ASB





Front zippered pockets



**NEW**

**ALPINE SWEATER FLEECE  
1/4 ZIP PULLOVER**

<b>223540</b>	Adult	S-3XL	MSRP 60.00
<b>223740</b>	Ladies	XS-2XL	MSRP 60.00

- Eco-Revive® product featuring 80% recycled polyester/20% polyester
- Ladies' fit on style 223740
- Hanger loop label
- Set-in sleeves
- Front zippered pockets
- Open bottom



BLACK HEATHER  
K34

GRAPHITE HEATHER  
R13

NAVY HEATHER  
U22

OLIVE HEATHER  
49N

SILVER HEATHER  
R12





**NEW** COOLCORE® 1/4 ZIP PULLOVER

<b>222140</b>	Adult	S-3XL	MSRP 34.00
<b>222240</b>	Youth	S-XL	MSRP 33.00
<b>222340</b>	Ladies	XS-2XL	MSRP 34.00

- 88% polyester/12% elastane Coolcore® with color secure® technology that helps prevent dye migration
- Ladies' fit on style 222340
- Garment protects against the sun with 50+ UPF
- Tagless label
- Set-in sleeves with rolled forward shoulder seam



ATHLETIC GREY 009    BLACK 080    COLUMBIA BLUE 089    DARK GREEN 035



IRON 980    MAROON 745    NAVY 065    OLIVE 039



PURPLE 747    ROYAL 060    SCARLET 083    WHITE 005

222340



222702



222140

222594





## CHILL FLEECE 2.0 COLLECTION

6852



6854



**eco**REVIVE®  
SUSTAINABLE FABRIC TECHNOLOGY

Back



### MORE FROM THE CHILL FLEECE 2.0 COLLECTION



COORDINATING  
1/2 ZIP PULLOVER  
6855 | 6856 | 6857



COORDINATING  
FULL ZIP HOODIE  
6858 | 6859 | 6860



COORDINATING  
HEADBAND  
6893

**NEW**

### CHILL FLEECE VEST 2.0

<b>6852</b>	Adult	S-3XL	MSRP 40.00
<b>6854</b>	Ladies	XS-2XL	MSRP 40.00

- Eco-Revive® product featuring 8 ounce, 70% recycled polyester/30% polyester
- Ladies' fit on style 6854
- Hanger loop label
- Full front zipper with zipper garage to keep elements out
- Front zippered pockets
- Spandex bound sleeve holes
- Open bottom



BLACK  
080

GRAPHITE  
059

NAVY  
065

OLIVE  
039

OYSTER  
531

STORM  
932





Back



223747



223547

229559

NEW

### V-STREET FULL-ZIP JACKET

<b>223547</b>	Adult	S-3XL	MSRP 64.00
<b>223647</b>	Youth	S-XL	MSRP 63.00
<b>223747</b>	Ladies	S-2XL	MSRP 64.00

- 100% polyester double-knit
- Ladies fit on style 223747
- Woven label
- Front zipper
- Set-in sleeves
- Front pockets
- Dual inside pockets
- Striped rib-knit collar, cuffs and bottom band



ATHLETIC HEATHER/  
WHITE  
152

BLACK/  
WHITE  
420

NAVY/  
WHITE  
301



ROYAL/  
WHITE  
280

SCARLET/  
WHITE  
408

WHITE/  
ATHLETIC HEATHER  
510

222702





223558

229531



223758

229731



**NEW** SERIESX FULL-ZIP JACKET

<b>223558</b>	Adult	S-3XL	MSRP 56.00
<b>223658</b>	Youth	S-XL	MSRP 55.00
<b>223758</b>	Ladies	XS-2XL	MSRP 56.00

- Micron™ polyester is a lightweight, wind/water-resistant fabric
- 100% polyester micromesh lining
- Ladies fit on style 223758
- Woven label
- Front zipper
- Set-in sleeves
- Front zippered pockets
- Elastic cuffs
- Adjustable bottom hem with hidden shockcord closure in right pocket on Adult and Ladies



BLACK  
080

CARBON  
J96

NAVY  
065

MORE FROM THE SERIESX COLLECTION



**229528 | 229628 | 229728**  
SeriesX Hooded Jacket



**229531 | 229631 | 229731**  
SeriesX Pant



**229533 | 229633 | 229733**  
SeriesX Pullover





NEW

## CROSSTOWN JACKET

<b>223530</b>	Adult	S-3XL	MSRP 42.00
<b>223630</b>	Youth	S-XL	MSRP 41.00
<b>223730</b>	Ladies	S-2XL	MSRP 42.00

- Dry-Excel™ 100% polyester double-knit
- Dry-Excel™ 100% polyester mesh inserts
- Ladies' fit on style 223730
- Woven label
- Front zipper
- Set-in sleeves
- Front zippered pockets
- Open bottom

BLACK/  
BLACK  
425BLACK/  
WHITE  
420GRAPHITE/  
WHITE  
R04NAVY/  
WHITE  
301ROYAL/  
WHITE  
280SCARLET/  
WHITE  
408WHITE/  
BLACK  
226

223730

223530

223731



NEW

## CROSSTOWN PANT

<b>223531</b>	Adult	S-3XL	MSRP 40.00
<b>223631</b>	Youth	S-XL	MSRP 39.00
<b>223731</b>	Ladies	S-2XL	MSRP 40.00

- Dry-Excel™ 100% polyester double-knit
- Dry-Excel 100% polyester mesh inserts
- Ladies' fit on style 222731
- Woven label
- Covered elastic waistband with inside drawcord
- Side seam pockets
- Tapered leg
- Zipper on outside lower leg

BLACK/  
BLACK  
425BLACK/  
WHITE  
420GRAPHITE/  
WHITE  
R04NAVY/  
WHITE  
301ROYAL/  
WHITE  
280SCARLET/  
WHITE  
408WHITE/  
BLACK  
226

223531

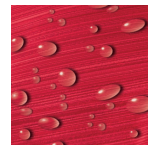




## COORDINATING JACKET

DEVIATE JACKET  
229539 | 229739

Reflective  
Zipper Pull



Water  
Repellent

Template X3



Ladies Fit



## DEVIATE PULLOVER

**229541** Adult XS-3XL MSRP 86.60  
**229741** Ladies XS-2XL MSRP 86.60

- Dry-Excel™ bonded polyester is a scuba bonded fabric featuring a tonal striation
- Poly/spandex storm cuffs for weather protection
- Raglan sleeves
- Front zippered pockets
- Zipper garage and storm flap



Only available in Adult

BLACK  
080

CARBON  
J96

NAVY  
065

ROYAL  
060

SCARLET  
083

WHITE  
005

FOREST  
038

MAROON  
045





P303



Back

LEGEND COLLECTION



OUTERWEAR | PULLOVERS



Side zippered pockets



## LEGEND HOODED PULLOVER

**R20DSM** Adult S-4XL MSRP 76.80

- 90% polyester/10% spandex lightweight stretch woven fabric with durable water-repellent finish to keep you dry
- High collar, half-zip pullover style zipper garage
- 3-piece hood with drawcord
- Set-in sleeves
- Side zippered pockets
- Inside mesh valuables pocket
- Spandex bound cuffs
- Open bottom



BLACK  
BLK

DK GREEN/  
BLACK  
A0J

NAVY  
NAV



ROYAL/  
BLACK  
72T

STEALTH  
SHL

STEALTH/  
BLACK  
ANN



TRUE RED/  
BLACK  
A7B

WHITE/  
NAVY  
WNA

WHITE/  
STEALTH  
XDE

R20SWM





## CHILL FLEECE 2.0 COLLECTION

**ecoREVIVE®**  
SUSTAINABLE FABRIC TECHNOLOGY



### CHILL FLEECE 2.0 1/2 ZIP PULLOVER

<b>6855</b>	Adult	S-3XL	MSRP 45.80
<b>6856</b>	Youth	XS-L	MSRP 44.80
<b>6857</b>	Ladies	XS-2XL	MSRP 45.80

- Eco-Revive® product featuring 8 ounce, 70% recycled polyester/30% polyester
- Ladies' fit on style 6857
- Hanger loop label
- Set-in sleeves
- Front zippered pockets with spandex binding detail
- Spandex bound cuffs
- Open bottom



Available in Adult  
& Ladies Only



Available in Adult & Ladies Only



### MORE FROM THE CHILL FLEECE 2.0 COLLECTION



**6852**  
**6854**  
Chill Fleece  
2.0 Vest



**6858**  
**6859**  
**6860**  
Chill Fleece 2.0  
Full Zip Hoodie



**6893**  
Chill Fleece  
2.0 Headband

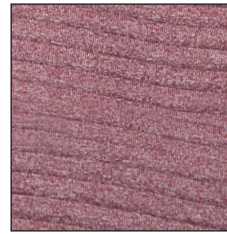


COORDINATING FULL-ZIP  
229588



229794

229594



3D Seamless insulated knit traps heat to keep you warm while 3D channels release excess heat to keep you comfortable.



Pleated Back Detail on Ladies



### 3D REGULATE PULLOVER

<b>229594</b>	Adult
XS-3XL	MSRP 70.80
<b>229794</b>	Ladies
XS-2XL	MSRP 70.80

- 100% polyester heathered knit with seamless quilted insulation for added warmth
- Wik-Sof™ performance fleece lower body
- Ladies' fit on style 229794
- Half-zip pullover style with storm flap and zipper garage
- Set-in sleeves
- Front zippered pockets



BLACK  
HEATHER/  
BLACK  
K64

FOREST  
HEATHER/  
FOREST  
K65

MAROON  
HEATHER/  
MAROON  
K69



NAVY  
HEATHER/  
NAVY  
K64

ROYAL  
HEATHER/  
ROYAL  
K66



SILVER  
HEATHER/  
SILVER  
K60

SCARLET  
HEATHER/  
SCARLET  
K67

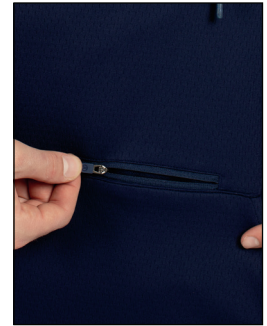




LIMITLESS  
COLLECTION



Drawstring Hood



Front Zippered Valuables Pocket



### LIMITLESS 1/4 ZIP HOODIE

**222584** Adult XS-3XL MSRP 53.80

- Dry-Excel™ 100% polyester wicking double knit mesh texture
- High collar, half-zip pullover style zipper garage
- Pinhole mesh lined hood with drawcord
- Raglan sleeves
- Front pouch pocket
- Half-elastic cuffs
- Dropped tail



BLACK/  
BLACK  
425

BLACK/  
WHITE  
420

CARBON/  
CARBON  
D87V

CARBON/  
WHITE  
F52

DARK GREEN/  
WHITE  
438



MAROON/  
WHITE  
380

NAVY/  
NAVY  
S14

NAVY/  
WHITE  
301

ROYAL/  
WHITE  
280

SCARLET/  
WHITE  
408

### MORE FROM THE LIMITLESS COLLECTION

229580



**229579 | 229679 | 229779**  
Limitless Jacket



**229580 | 229680 | 229780**  
Limitless Pant





Template TW70



Embossed Pattern



## BIONIC WINDSHIRT

**229019** Adult S-3XL MSRP 60.20

- Micron™ polyester is a lightweight, wind/water resistant fabric
- Sleeves and arms are embossed with the Screenmesh print
- Jersey and taffeta lining for added warmth
- Raglan sleeves
- Front pockets
- Elastic cuffs
- Open bottom with adjustable elastic hidden drawcord
- Coordinating pants: 229531 | 229631 | 229731, 229095



BLACK/ LT GOLD R16  
BLACK/ ORANGE 423  
BLACK/ SCARLET 500  
BLACK/ VEGAS GOLD 255  
BLACK/ WHITE 420  
CARBON/ BLACK E84  
CARDINAL/ WHITE 409  
DK GREEN/ WHITE 438  
KELLY/ WHITE 340



MAROON/ WHITE 380  
NAVY/ LT GOLD S28  
NAVY/ SCARLET S20  
NAVY/ VEGAS GOLD 256  
NAVY/ WHITE 301  
PURPLE/ WHITE 450  
ROYAL/ LT GOLD S67  
ROYAL/ WHITE 280  
SCARLET/ WHITE 408



## MEDALIST 2.0 COLLECTION

### COORDINATING JACKET

**4395 | 4396 | 4397**



Ladies Fit

### MEDALIST 2.0 PULLOVER

**4386** Adult S-3XL MSRP 38.40

**4388** Ladies XS-2XL MSRP 38.40

- Heavyweight 100% polyester matte brushed tricot
- Tagless label
- Set-in sleeves
- Front pouch pocket
- Coordinating pants: 7731 | 7732 | 7733, 7726 | 7728, 7760 | 7761 | 7762



BLACK/ GOLD 421  
BLACK/ RED 424  
BLACK/ VEGAS GOLD 255  
BLACK/ WHITE 420  
DARK GREEN/ WHITE 438  
GRAPHITE/ WHITE R04  
KELLY/ WHITE 340

Available in Adult only



NAVY/ WHITE 301  
PURPLE/ WHITE 450  
RED/ WHITE 400  
ROYAL/ WHITE 280  
BLACK/ ORANGE 423  
MAROON/ WHITE 380  
NAVY/ VEGAS GOLD 256





## WELD HYBRID PULLOVER

**229596** Adult S-3XL MSRP 74.00  
4XL in select colors

- 90% polyester/10% spandex, 4-way stretch woven fabric front panel and back yoke
- Flex-Sof™ smooth, lightweight, polyester knit with superior abrasion-resistance & high mechanical stretch on lower body, sleeves and back
- Low profile collar
- Set-in sleeves
- Spandex bound cuff
- Alternate pant: 229544



MAROON/  
CARBON/  
E92

ORANGE/  
CARBON/  
E96

PURPLE/  
CARBON/  
E2N

KELLY/  
CARBON/  
94D

CARBON/  
CARBON/  
D67

FOREST/  
CARBON/  
E79

Available in Adult 4XL



BLACK/  
CARBON/  
D86

NAVY/  
CARBON/  
E81

WHITE/  
CARBON/  
E94

ROYAL/  
CARBON/  
E86

SCARLET/  
CARBON/  
E90



## WELD JOGGERS

**229559** Adult XS-3XL MSRP 60.00  
**229799** Ladies XS-2XL MSRP 60.00

- 90% polyester/10% spandex
- Covered elastic waistband with outside drawcord and silicone dipped tips (inside drawcord on XS-S)
- Front pockets
- Back locking welt pocket on Adult
- Tapered leg
- Zipper on outside lower leg
- Articulated seaming at the knees



NAVY  
065

BLACK  
080

CARBON  
J96

Zippered valuables  
pocket with reflective  
metallic silicone



Back

Side  
Pockets



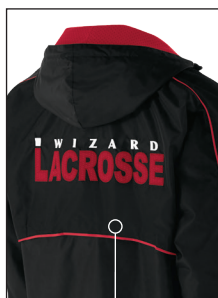




## WIZARD PULLOVER

229016 Adult S-3XL MSRP 70.00

- Micron™ polyester is a lightweight, wind/water resistant fabric
- Micromesh lined nylon body & hood
- Adjustable mesh lined hood with eyelets and concealed cord locks
- Front zippered pockets
- Half-elastic cuffs
- Open bottom with adjustable elastic hidden drawcord

Adjustable Vent  
For Decoration  
Access

BLACK/ LIGHT GOLD R16  
BLACK/ ORANGE 423  
BLACK/ SCARLET 500  
BLACK/ WHITE 420  
MAROON/ WHITE 380  
NAVY/ LIGHT GOLD S28



NAVY/ WHITE 301  
ROYAL/ WHITE 280  
SCARLET/ WHITE 408  
CARBON/ WHITE F52  
DARK GREEN/ WHITE 438



## SABLE PANT

229095 Adult XS-3XL MSRP 52.80

- Micron™ lightweight polyester shell
- Mesh (UPPER LEG) and nylon lining (LOWER LEG)
- Covered elastic waistband with inside drawcord
- Front pockets
- Back pockets with zipper
- Zipper on outside lower leg and bottom snaps



BLACK/ ORANGE 423  
BLACK/ SCARLET 500  
BLACK/ WHITE 420  
NAVY/ WHITE 301  
ROYAL/ WHITE 280  
SCARLET/ WHITE 408  
DK GREEN/ WHITE 438  
MAROON/ WHITE 380



BLACK/ BLACK 425  
CARBON/ CARBON D67  
NAVY/ NAVY S14



Dropped Tail





SERIESX COLLECTION



398F

229733

229533

229556  
pg. 145



Embossed Pattern

## COORDINATING WARM-UP

**223558 | 223658 | 223758**

**229528 | 229628 | 229728**

**229531 | 229631 | 229731**



## SERIESX PULLOVER

**229533** Adult XS-3XL MSRP 59.60  
4XL in select colors

**229633** Youth S-XL MSRP 58.60

**229733** Ladies XS-2XL MSRP 59.60

- Micron™ polyester is a lightweight, wind/water-resistant fabric
- Embossed inserts for subtle textured pattern
- Micromesh lined nylon body
- Taffeta lined sleeves
- Ladies' fit on 229733
- Set-in sleeves
- Front pockets
- Spandex bound cuffs
- Dropped tail with side vents
- Alternate pant: 229531 | 229631 | 229731, 229095



Side seam zipper for easy on/off

Available in 4XL, Ladies & Youth



BLACK  
080

CARBON  
J96

WHITE  
005

Available in Adult & Ladies



NAVY  
065

ROYAL  
060

SCARLET  
083



BLACK/  
ORANGE  
423

BLACK/  
SCARLET  
500



CARDINAL  
J36

CARBON/  
GOLD  
43M

COLUMBIA  
BLUE  
089

DARK  
GREEN  
035

KELLY  
030

MAROON  
045

NAVY/  
GOLD  
302

NAVY/  
SCARLET  
S20

PURPLE  
050





Jacket folds up into zippered front pocket

## COORDINATING JACKET & HOODIE

229542 & 222552 | 222652



### RANGE PACKABLE PULLOVER

<b>229554</b>	Adult	S-3XL	MSRP 48.00
		4XL in select colors	
<b>229654</b>	Youth	S-XL	MSRP 47.00
		Select Colors	

- Tech weave printed Micron™ lightweight polyester, wind/water resistant fabric
- Adjustable 3 piece hood with eyelets and concealed cord locks on Adult only (elastic on youth)
- Raglan sleeves
- Half-elastic cuffs
- Adjustable bottom hem with hidden shockcord closure on right side of pocket (on Adult only)
- Coordinating pants: 229095



Available in Youth  
Available in Adult 4XL



Jacket folds up into zippered front pocket concealed under flap.



### PULLOVER JACKET IN A POCKET

<b>3130</b>	Adult	S-3XL	MSRP 30.20
-------------	-------	-------	------------

- Outer shell of 100% nylon taffeta
- Hood with drawcord
- Set-in sleeves
- Elastic cuffs







## PACK PULLOVER

**229534** Adult  
S-3XL MSRP 39.00

4XL in select colors

**229634** Youth  
S-XL MSRP 38.00

- 100% polyester MicroTec soft micro denier fabric with PU coating for water-resistance
- Adjustable 3-piece hood on Adult only (elastic on youth)
- Set-in sleeves
- Spandex bound cuff
- Adjustable bottom hem with hidden shockcord closure in right pocket (on Adult)



Jacket folds up into zippered front pocket



Back



121C



Available in  
4XL & Youth

Available in  
Adult & Youth



BLACK  
080

CARBON  
J96

NAVY  
065



ROYAL/  
ATHLETIC  
GREY  
52E

SCARLET/  
ATHLETIC  
GREY  
51E



NAVY/  
GOLD  
302

NAVY/  
SCARLET  
520

OLIVE  
039

ORANGE/  
ATHLETIC  
GREY  
57E

PURPLE/  
ATHLETIC  
GREY  
55E

ROYAL/  
GOLD  
281



BLACK/  
ATHLETIC  
GREY  
42M

BLACK/  
ORANGE  
423

BLACK/  
SCARLET  
500

KELLY/  
ATHLETIC  
GREY  
56E

MAROON/  
ATHLETIC  
GREY  
54E

NAVY/  
ATHLETIC  
GREY  
50E





**COORDINATING  
JACKET**

**6861 | 6862**

**MICRO-LITE FLEECE 1/4 ZIP PULLOVER**

<b>6863</b>	Adult	XS-3XL	MSRP 26.40
		4XL in select colors	
<b>6864</b>	Ladies	XS-2XL	MSRP 26.40
		3XL in select colors	

- Eco-Revive® product featuring 5.3 ounce, 70% recycled polyester/30% polyester
- Ladies' fit on style 6864
- Hanger loop label
- Set-in sleeves with shoulder insert
- Open bottom

Available in Adult 4XL & Ladies 3XL



BLACK 080    DK GREEN 035    GRAPHITE 059    MAROON 745

Available in Adult 4XL & Ladies 3XL



NAVY 065    OYSTER 537    ROYAL 060    STORM 932



ATHLETIC GREY 009    COLUMBIA BLUE 089    KELLY 030    OLIVE 039



ORANGE 029    PURPLE 747    SCARLET 083



6863



6864





## MICRO POLY WINDSHIRT/LINED

**3415**    Adult    S-4XL    MSRP 29.40

- Outer shell of 100% micro polyester
- Lined with 100% polyester taffeta
- Rib-knit V-neck collar, cuffs and bottom band
- Set-in sleeves
- Side seam pockets



BLACK  
080

RED  
040

ROYAL  
060

NAVY  
065



## SHORT SLEEVE PULLOVER

**872RVM**    Adult    S-3XL    MSRP 52.20  
**872RVB**    Youth    S-XL    MSRP 51.20

- 100% polyester lightweight breathability fabric
- Dri-Power® Moisture Wicking Technology
- Raglan sleeves
- Adjustable bottom hem with hidden shockcord closure (on Adult only)

### Colors Available in Youth



BLACK/  
WHITE  
BWH

NAVY/  
WHITE  
NWH

ROYAL/  
WHITE  
ROW

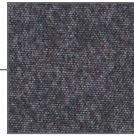
TRUE RED/  
WHITE  
TRW

WHITE/  
STEALTH  
XDE





RAIDER COLLECTION

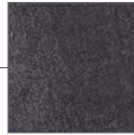


Tech Print Pattern

Sleeve pocket with silver media port & silicone welded zipper

Divided Front Pouch Pocket

Spandex-Bound Cuffs



Tech Print Pattern

Sleeve pocket with silver media port & silicone welded zipper

Divided Front Pouch Pocket

## COORDINATING JACKET

229157 | 229357



## RAIDER PULLOVER

**229155** Adult XS-3XL MSRP 66.00  
4XL in select colors

- Ultra-lightweight Aero-Tec™ fabric provides both weather protection and zero noise, without the bulk
- Set-in sleeves

Available in Adult 4XL



CARBON PRINT/  
BLACK  
H05

CARBON PRINT/  
GRAPHITE  
H60

CARBON PRINT/  
NAVY  
H03

CARBON PRINT/  
ROYAL  
H02

CARBON PRINT/  
SCARLET  
H01



CARBON PRINT/  
FOREST  
H69

CARBON PRINT/  
MAROON  
H06

CARBON PRINT/  
ORANGE  
H07

CARBON PRINT/  
PURPLE  
H68

CARBON PRINT/  
WHITE  
H04



## RAIDER PULLOVER SHORT SLEEVE

**229545** Adult S-3XL MSRP 60.60  
4XL in select colors

- Ultra-lightweight Aero-Tec™ fabric provides both weather protection and zero noise, without the bulk
- Set-in sleeves

Available in Adult 4XL



CARBON PRINT/  
BLACK  
H05

CARBON PRINT/  
NAVY  
H03

CARBON PRINT/  
ROYAL  
H02

CARBON PRINT/  
SCARLET  
H01

CARBON PRINT/  
WHITE  
H04



CARBON PRINT/  
FOREST  
H69

CARBON PRINT/  
GRAPHITE  
H60

CARBON PRINT/  
MAROON  
H06

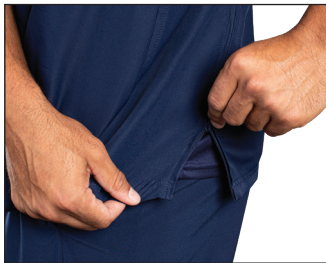
CARBON PRINT/  
ORANGE  
H07

CARBON PRINT/  
PURPLE  
H68





Stretch mesh at center back  
for maximum mobility



Side seam zipper for easy on/off



## CLUBHOUSE SHORT SLEEVE PULLOVER

**229581** Adult  
S-4XL MSRP 44.80

5XL in select colors

**229681** Youth  
S-XL MSRP 43.80

- Areo-Tec 100% polyester
- Low profile collar
- Set-in sleeves
- Side seam pockets

ES474



229556

Available in 5XL



BLACK/  
WHITE  
420

GRAPHITE/  
WHITE  
R04

NAVY/  
WHITE  
301

WHITE/  
GRAPHITE  
751

ROYAL/  
WHITE  
280

SCARLET/  
WHITE  
408

DARK  
GREEN/  
WHITE  
438

MAROON/  
WHITE  
380

BLACK/  
ORANGE  
423

NAVY/  
SCARLET  
S20





Side zipper for easy on/off



Back



ES471



### CLUBHOUSE PULLOVER

**229595** Adult S-3XL MSRP 48.80

**229695** Youth S-XL MSRP 47.80

- Areo-Tec 100% polyester
- Woven label
- Low profile collar
- Set-in sleeves
- Side seam pockets
- Spandex bound cuffs



BLACK/  
BLACK  
425

BLACK/  
ORANGE  
423

BLACK/  
WHITE  
420

DARK GREEN/  
WHITE  
438



GRAPHITE/  
WHITE  
R04

NAVY/  
WHITE  
S14

NAVY/  
SCARLET  
S20

NAVY/  
WHITE  
S01



ROYAL/  
WHITE  
280

SCARLET/  
WHITE  
408

WHITE/  
GRAPHITE  
751







Ladies Fit



**DRI-POWER® LIGHTWEIGHT  
1/4 ZIP PULLOVER**

**QZ7EAM** Adult XS-3XL MSRP 40.00  
**QZ7EAX** Ladies S-2XL MSRP 40.00

- 100% polyester 2-tone interlock
- Lightweight stretch fabric
- Dri-Power® Moisture Wicking Technology
- Odor protection
- Tagless label
- Set-in sleeves

QZ7EAM

QZ7EAX



Available in  
Adult only



BLACK  
BLK

CARDINAL  
CRD

DARK GREEN  
DGR

NAVY  
NAV

MAROON  
MAR

PURPLE  
PUR

ROYAL  
ROY

STEALTH  
SHL

TRUE RED  
TRR





**PRISM  
COLLECTION**

Honeycomb Knit

**MORE FROM THE  
PRISM COLLECTION**



**222568  
222768**  
Prism Polo



**222576  
222776**  
Prism Bold Polo



**PRISM BOLD 1/4 ZIP PULLOVER**

**222591** Adult S-3XL MSRP 39.40  
**222791** Ladies XS-2XL MSRP 39.40

- Dry-Excel™ 4.8 ounce 100% polyester wicking honeycomb knit
- Garment protects against the sun with 50+ UPF
- Ladies' fit on style 222791
- Tagless label
- Set-in sleeves



Back



222591

222791



BLACK/  
CARBON  
D86

BLACK/  
GOLD  
421

BLACK/  
ORANGE  
423

BLACK/  
SCARLET  
500

MAROON/  
WHITE  
380

NAVY/  
GOLD  
302

BLACK/  
WHITE  
420

CARBON/  
WHITE  
F52

NAVY/  
WHITE  
301

ROYAL/  
WHITE  
280

SCARLET/  
WHITE  
408





## ELECTRIFY COOLCORE® COLLECTION



### ELECTRIFY COOLCORE® 1/2 ZIP PULLOVER

<b>222574</b>	Adult	S-3XL	MSRP 39.40
<b>222674</b>	Youth	S-XL	MSRP 38.40
<b>222774</b>	Ladies	XS-3XL	MSRP 39.40

- 87% polyester/13% elastane heathered wicking knit with Coolcore® technology
- 92% polyester knitted mesh/8% elastane wicking knit inserts with Coolcore® technology
- Garment protects against the sun with 50+ UPF on body, (25+ on mesh inserts)
- Ladies' fit on style 222774
- Tagless label
- Raglan sleeves with thumbholes for warmth on Ladies'

222774



Thumbholes  
on Ladies



Back

222574

### MORE FROM THE ELECTRIFY COOLCORE® COLLECTION



**222571**  
**222671**  
**222771**  
Electrify  
Coolcore® Tee



**222570**  
**222670**  
**222770**  
Electrify  
Coolcore® Long  
Sleeve Tee



**222589**  
**222689**  
Electrify  
Coolcore®  
Hoodie



**222572**  
**222772**  
Electrify  
Coolcore® Polo



ATHLETIC GREY  
SSM

BLACK  
K94

NAVY  
U22

ROYAL  
U55

\*WHITE  
005

OLIVE  
HEATHER  
49N

DARK GREEN  
HEATHER  
V97

GOLD  
HEATHER  
E70

KELLY  
HEATHER  
U10

MAROON  
HEATHER  
T09

ORANGE  
HEATHER  
V98

PURPLE  
HEATHER  
U86

SCARLET  
HEATHER  
T20

Available in  
Adult only

Available in Adult & Ladies only

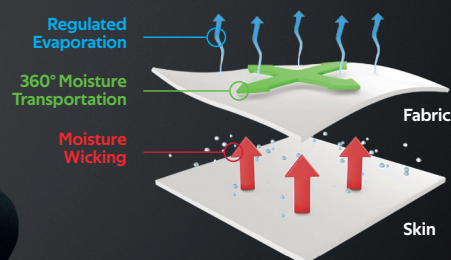




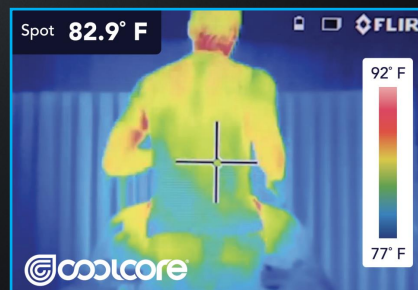
Coolcore® is engineered to distribute moisture quickly throughout the garment.

As the moisture spreads it dries faster to keep you cool and comfortable, and has UPF 50 sun protection

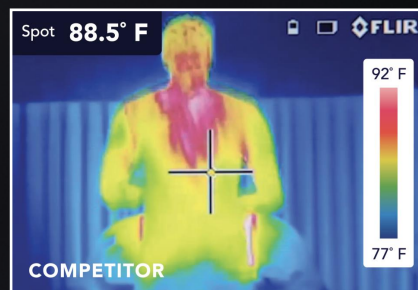
### Patented Fabric Technology



### Technology Comparison



The same athlete after 20 minutes of activity



# STAY COOL

229394





## SHADOW TONAL HEATHER COLLECTION



Ladies Fit



### SHADOW TONAL HEATHER 1/4 ZIP PULLOVER

<b>2908</b>	Adult	S-3XL	MSRP 35.20
<b>2909</b>	Ladies	XS-2XL	MSRP 35.20

- 100% polyester heathered wicking knit top body, collar and sleeves
- 100% polyester wicking knit solid bottom body
- Tagless label
- Set-in sleeves
- Dropped tail bottom on Ladies'



BLACK  
080

DARK  
GREEN  
035

MAROON  
045

NAVY  
065

ORANGE  
029

Available in  
Ladies Only



PURPLE  
050

RED  
040

ROYAL  
060

SILVER  
099

POWER  
PINK  
809



## ATTAIN COLLECTION



Ladies Fit



### ATTAIN 1/4 ZIP PULLOVER

<b>2785</b>	Adult	S-3XL	MSRP 19.40
		4XL-5XL in select colors	
<b>2786</b>	Youth	S-XL	MSRP 18.40
<b>2787</b>	Ladies	XS-2XL	MSRP 19.40
		3XL in select colors	

- 100% polyester wicking knit with color secure® technology that helps prevent dye migration
- Tear away label
- Set-in sleeves
- Dropped tail bottom on Ladies'

Available in Adult 4XL-5XL  
& Ladies 3XL



BLACK  
080

GRAPHITE  
059

NAVY  
065

WHITE  
005

DARK  
GREEN  
035

RED  
040

ROYAL  
060

SILVER  
099

Available in Adult & Ladies only



COLUMBIA  
BLUE  
089

CARDINAL  
J36

GOLD  
025

KELLY  
030

MAROON  
045

ORANGE  
029

PURPLE  
050

VEGAS  
GOLD  
023

Available in  
Ladies Only



POWER  
PINK  
809





## MOMENTUM TEAM COLLECTION



223500



223700



### MOMENTUM TEAM 1/4 ZIP PULLOVER

<b>223500</b>	Adult	S-4XL	MSRP 24.40
<b>223600</b>	Youth	S-XL	MSRP 23.40
<b>223700</b>	Ladies	S-3XL	MSRP 24.40

- Dry-Excel™ 100% polyester interlock smooth knit with color secure® technology that helps prevent dye migration
- Garment protects against the sun with 45+ UPF
- Ladies' fit on style 223700
- Tagless label
- Set-in sleeves with angled shoulder seam for mobility and comfort



BLACK/  
IRON  
62U

BLACK/  
ROYAL  
426

BLACK/  
SCARLET  
500

BLACK/  
WHITE  
420



NAVY/  
WHITE  
301

ROYAL/  
WHITE  
280

SCARLET/  
WHITE  
408

Available in Adult & Ladies only



BLACK/  
DARK GREEN  
429

BLACK/  
MAROON  
486

BLACK/  
ORANGE  
423

BLACK/  
PURPLE  
487

BLACK/  
KELLY  
90M



GOLD/  
ROYAL  
240

ORANGE/  
NAVY  
77T

SCARLET/  
NAVY  
W86

IRON/  
WHITE  
590

### MORE FROM THE MOMENTUM TEAM COLLECTION

**223501**  
**223601**  
**223701**  
Momentum  
Team Tee



**223502**  
**223602**  
**223702**  
Momentum  
Team Long  
Sleeve Tee



**222540**  
**222640**  
**222740**  
Momentum  
Team  
Hoodie



**P820**  
Momentum  
Team Cap





**ULTRA SOFT  
COTTONY FEEL!**



**FREESTYLE SUBLIMATED  
1/4 ZIP PULLOVER**

<b>228107</b>	Adult	S-3XL	MSRP 64.00
<b>228207</b>	Youth	S-XL	MSRP 63.00
<b>228307</b>	Ladies	S-3XL	MSRP 64.00

Speckled  
Gradient

Rectangular  
Prism



Watercolor Camo II



Spectator







For available design lines visit  
[augustasportswear.com/sublimation](http://augustasportswear.com/sublimation)



## ULTRA SOFT COTTONY FEEL!



FREESTYLE SUBLIMATED  
COTTON-TOUCH  
POLY 1/4 ZIP PULLOVER

<b>228145</b>	Adult	S-3XL	MSRP 65.00
<b>228245</b>	Youth	S-XL	MSRP 64.00
<b>228345</b>	Ladies	S-3XL	MSRP 65.00

Water Color  
Camo II

Wavy  
Vertical  
Stripe



Tie Dye



Gradient





Two-Way  
Front Zipper

Elasticized Hook &  
Loop Fastener Cuffs



## CONQUEST JACKET

**229162** Adult S-3XL MSRP 144.00

- Duraweav™ fabric has a smooth nylon surface
- Anti-pill microfleece and quilted nylon lining
- Adjustable 3-piece hood with eyelets and concealed cord locks
- Knee length
- Set-in sleeves
- Front right chest media pocket with inside hidden cord port
- Front pockets with microfleece lining



BLACK  
080

NAVY  
065

ROYAL  
060

SCARLET  
083



## RANGE JACKET

**229542** Adult S-3XL MSRP 82.60

- Tech weave printed Micron™ lightweight polyester
- Omni-Sof™ microfleece lined
- Taffeta lined sleeves
- Adjustable 3 piece hood with eyelets & concealed cord locks (on Adult only) (elastic on youth)
- Raglan sleeves
- Shiny coated front pockets with black pull cord
- Interior decoration zipper
- Inside zippered valuables pocket
- Half-elastic cuffs
- Open bottom with adjustable elastic hidden drawcord on Adult sizes only
- Coordinating pants: 229095



CARBON  
J96

NAVY/  
CARBON  
E81

FOREST/  
CARBON  
E79

MAROON/  
CARBON  
E92



ROYAL/  
CARBON  
E86

SCARLET/  
CARBON  
E90

SCARLET  
083

WHITE/  
CARBON  
E94



## RANGE COLLECTION

Template  
TW76

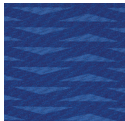


Dropped Tail

Template  
W3



Reflective  
Zipper Pull &  
Matte Tips



Tech  
Weave  
Print





Dropped Tail



Template FS48

Zipper on Outside Lower Leg and Bottom Snaps



## CHARGER JACKET

**229059** Adult S-4XL MSRP 91.60

**229259** Youth S-XL MSRP 90.60

- Micro-Cord™ is a woven polyester fabric with a raised, ribbed texture
- Omni-Sof™ microfleece lining
- Nylon sleeve lining
- Adjustable hood with eyelets and concealed cord locks on Adult sizes only (Youth has elastic)
- Raglan sleeves
- Front zippered pockets
- Open bottom with adjustable elastic hidden drawcord (on Adult only)

Available in Adult Only



BLACK/  
WHITE  
420

DK GREEN/  
WHITE  
438

NAVY/  
WHITE  
301

SCARLET/  
WHITE  
408

KELLY/  
WHITE  
340

ROYAL/  
WHITE  
280

Available in Adult Only



BLACK/  
LT GOLD  
R16

BLACK/  
SCARLET  
500

BLACK/  
ORANGE  
423

CARBON/  
WHITE  
F52

MAROON/  
WHITE  
380

NAVY/  
LT GOLD  
S28



## PACER PANT

**229056** Adult S-3XL MSRP 59.40

- Micro-Cord™ woven polyester fabric with a raised, ribbed texture
- Mesh lined upper leg and nylon lining lower leg
- Front pockets
- Back pockets with zipper



NAVY  
065

ROYAL  
060

SCARLET  
063

BLACK  
080

CARBON  
J96





P500



Back



P303



Fully Reversible



Detachable hood



Interior all-access  
decoration zipper



### TURNABOUT REVERSIBLE JACKET

<b>229587</b>	Adult	XS-3XL	MSRP 79.00
<b>229687</b>	Youth	S-XL	MSRP 78.00
<b>229787</b>	Ladies	XS-2XL	MSRP 79.00

- Micron™ polyester is a lightweight, wind/water-resistant fabric

- Lightweight fleece inner layer
- Ladies' fit on style 229787
- Set-in sleeves
- Front zippered pockets on both sides
- Elastic cuffs
- Open bottom

Available in Adult  
& Youth only



ATHLETIC  
GREY/  
CARBON  
48E

BLACK/  
CARBON  
D86

DARK GREEN/  
CARBON  
C84

MAROON/  
CARBON  
E92

NAVY/  
CARBON  
E81

OLIVE/  
BLACK  
85E

ORANGE/  
BLACK  
321

ROYAL/  
CARBON  
E86

SCARLET/  
BLACK  
48E

SCARLET/  
CARBON  
E90





## HOMEFIELD JACKET

**229111** Adult S-3XL MSRP 71.60

**229211** Youth S-XL MSRP 70.60

- Micron™ polyester is a lightweight, wind/water resistant fabric
- Adjustable hood with eyelets & concealed cord locks (on Adult only)
- Raglan sleeves
- Half-elastic cuffs and bottom
- Coordinating pants: 229531 | 229631 | 229731



BLACK/  
BLACK  
425

BLACK/  
ORANGE  
423

BLACK/  
SCARLET  
500

BLACK/  
WHITE  
420

NAVY/  
WHITE  
301

ROYAL/  
WHITE  
280

Available in Adult Only



SCARLET/  
WHITE  
408

NAVY/  
NAVY  
S14

MAROON/  
WHITE  
380

DK GREEN/  
WHITE  
438

PURPLE/  
WHITE  
450



## HOODED TAFFETA JACKET/FLEECE LINED

**3280** Adult S-4XL MSRP 63.20

**3281** Youth XS-L MSRP 62.20

- Outer shell of 100% nylon taffeta
- Body, sleeves and hood lined with 75% polyester/13% rayon/12% cotton grey heather fleece
- Hood with drawcord and sliders (youth has elastic)
- Set-in sleeves
- Reinforced slash front pockets with zippers
- Elastic cuffs and bottom



BLACK  
080

RED  
040

ROYAL  
060

NAVY  
065



MAROON  
045

PURPLE  
050

KELLY  
030

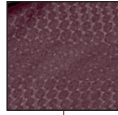
DARK  
GREEN  
035





Adjustable Quilted Hood

Embossed Pattern



Half-Elastic Cuffs



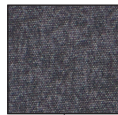
RAIDER COLLECTION

COORDINATING PULLOVERS

229545

229155 | 229655

Raider Print



Dual Front Chest Zippered Pocket

Dual Zippered Pockets

Ladies Fit



## BIONIC HOODED JACKET

229017 Adult S-3XL MSRP 73.80

229217 Youth S-XL MSRP 72.80

- Micron™ polyester lightweight, wind/water resistant fabric
- Embossed Micron blocking at hood, shoulders, & top sleeves with the Screenmesh pattern
- Quilted, polyester, taffeta lining
- Adjustable quilted hood with eyelets & concealed cord locks (on Adult only)
- Interior decoration zipper
- Inside zippered pocket
- Dual front zippered pockets
- Coordinating pants: 229531 | 229631 | 229731



BLACK/  
CARBON  
D86

CARBON/  
BLACK  
E84

Available in  
Adult Only



NAVY/  
CARBON  
E81

DK GREEN/  
CARBON  
C84

MAROON/  
CARBON  
E92



## RAIDER SOFT SHELL JACKET

229157 Adult S-3XL MSRP 97.20

4XL in select colors

229357 Ladies XS-2XL MSRP 97.20

3XL in select colors

- Lightweight, softshell outer fabric in 96% polyester, 4% spandex bonded to brushed back polyester
- Adjustable hood with drawcord (not available on Ladies' XS)
- Internal storm cuffs for weather protection
- Open bottom with adjustable elastic hidden drawcord

Available in Adult 4XL



CARBON  
PRINT/  
BLACK  
H05

CARBON  
PRINT/  
NAVY  
H03

Available in Ladies 3XL



CARBON  
PRINT/  
BLACK  
H05

CARBON  
PRINT/  
WHITE  
H04

Available in Adult Only



CARBON  
PRINT/  
FOREST  
H69

CARBON  
PRINT/  
PURPLE  
H68

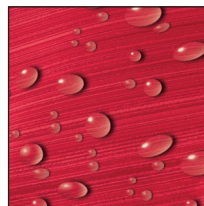
CARBON  
PRINT/  
MAROON  
H06

CARBON  
PRINT/  
ORANGE  
H07

CARBON  
PRINT/  
ROYAL  
H02

CARBON  
PRINT/  
SCARLET  
H01





Water Resistant

## COORDINATING PULLOVER 229541 | 229741



## DEVIATE JACKET

<b>229539</b>	Adult	XS-3XL	MSRP 100.20
<b>229739</b>	Ladies	XS-2XL	MSRP 100.20 in select colors

- Dry-Excel™ bonded polyester is a scuba bonded fabric featuring a tonal striation
- Poly/spandex storm cuffs
- Storm flap and zipper garage
- Raglan sleeves
- Front zippered pockets
- Dual inside pockets

Available in Ladies



BLACK  
080

CARBON  
J96

NAVY  
065

Available in Ladies



WHITE  
005

ROYAL  
060

SCARLET  
083





Back



229527

229431

229056



## POTOMAC JACKET

**229527** Adult S-3XL MSRP 82.40

- Micro-Cord™ woven polyester fabric with a raised, ribbed texture
- Micromesh lined body and sleeves
- Concealed adjustable hood with eyelets and concealed cord locks stows when not in use
- Back vent with adjustable closure for full decoration access
- Front zippered pockets
- Dual inside pockets
- Rib-knit collar and cuffs
- Open bottom with adjustable elastic hidden drawcord (on Adult)
- Dropped tail
- Coordinating pants: 229056



BLACK/  
GOLD  
421

BLACK/  
ORANGE  
423

BLACK/  
SCARLET  
500

DARK GREEN/  
WHITE  
438

MAROON/  
WHITE  
380



NAVY/  
GOLD  
302

NAVY/  
SCARLET  
S20

ROYAL/  
WHITE  
280

SCARLET/  
WHITE  
408



BLACK/  
WHITE  
420

CARBON/  
WHITE  
F52

NAVY/  
WHITE  
301



BLACK  
080

CARBON  
J96

NAVY  
065





**COORDINATING  
PULLOVER**  
**6855 | 6856 | 6857**



P304

6893

## CHILL FLEECE 2.0 FULL ZIP HOODIE

<b>6858</b>	Adult	S-3XL	MSRP 52.00
<b>6859</b>	Youth	XS-L	MSRP 51.00
<b>6860</b>	Ladies	XS-2XL	MSRP 52.00

- Eco-Revive product featuring 8 ounce, 70% recycled polyester/30% polyester
- Ladies' fit on style 6860
- Hanger loop label
- 3-piece hood with spandex binding
- Set-in sleeves
- Front zippered pockets with spandex binding detail
- Dual inside pockets
- Self-fabric cuffs
- Open bottom



BLACK  
080

GRAPHITE  
059

NAVY  
065

ROYAL  
060

Available in Adult & Ladies Only



SCARLET  
083



DK GREEN  
035

MAROON  
745

Available in Adult & Ladies Only



OLIVE  
039

OYSTER  
537

STORM  
932

229559

221398







104C



229716

UP TO  




229516

UP TO  



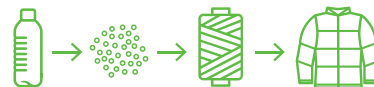





Welded  
Quilting

# REPREVE®

Products are made with  
100% post-consumer  
recycled plastic bottles.



REPREVE® ECO COLLECTION

OUTERWEAR | FULL-ZIP



UP TO  
7

**229513**  
Repreve®  
Eco Vest



UP TO  
6

**229713**  
Ladies Repreve®  
Eco Vest



UP TO  
8

**229516**  
Repreve®  
Eco Jacket



UP TO  
7

**229716**  
Ladies Repreve®  
Eco Jacket



UP TO  
6

**222575**  
Repreve®  
Eco Polo



UP TO  
4

**222775**  
Ladies Repreve®  
Eco Polo



UP TO  
8

**222577**  
Repreve®  
Eco Hoodie



UP TO  
1

**P203**  
Repreve®  
Eco Cap

## REPREVE® ECO JACKET

**229516** Adult XS-3XL MSRP 84.20  
**229716** Ladies XS-3XL MSRP 84.20

- 100% polyester MicroTec woven face with durable water-repellent finish to keep you dry
- Made from Repreve® 50% recycled polyester fill quilting
- Weld engineered quilting that's decoration friendly
- 78% polyester/22% spandex inserts, peached for softness
- Ladies' fit on 229716
- Front zippered pockets
- Half-elastic cuffs
- Dropped tail



BLACK  
080

CARBON  
J96

NAVY  
065

OLIVE  
039

STORM  
932

TUNDRA HAZE  
PRINT  
20M





Products are made with  
100% post-consumer  
recycled plastic bottles.



Each of our Repreve® partnered  
garments features soft,  
sustainable fabric technology.

REPREVE® ECO COLLECTION



## REPREVE® ECO VEST

<b>229513</b>	Adult	S-3XL	MSRP 68.00
<b>229713</b>	Ladies	XS-3XL	MSRP 68.00

- 100% polyester MicroTec woven face with durable water-repellent finish to keep you dry
- Made from Repreve® 50% recycled polyester fill quilting for lightweight warmth
- Weld engineered quilting that's decoration friendly
- Ladies' fit on style 229713
- Front zipper with antique nickel zipper pull and storm flap
- Side seam pockets
- Dropped tail on Ladies' style 229713



BLACK 080    CARBON J96    NAVY 065    OLIVE 039    STORM 932    TUNDRA HAZE PRINT 20M    WHITE 005





## COLLECTION

CONTROL YOUR COMFORT

### COORDINATING PULLOVER

229594 | 229794



### 3D REGULATE JACKET

229588 Adult XS-3XL MSRP 80.00

- 100% polyester heathered knit with seamless quilted insulation for added warmth
- Wik-Sof™ performance fleece lower body & hood
- 3-piece adjustable mesh lined hood
- Set-in sleeves
- Front zippered pockets
- Spandex bound cuff
- Dropped tail



BLACK  
HEATHER/  
BLACK  
K54

NAVY  
HEATHER/  
NAVY  
K64

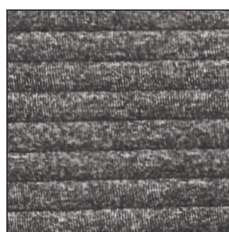
ROYAL  
HEATHER/  
ROYAL  
K66

FOREST  
HEATHER/  
FOREST  
K95



SILVER  
HEATHER/  
SILVER  
60E

MAROON  
HEATHER/  
MAROON  
K69



3D seamless insulated knit traps heat to keep you warm while 3D channels release excess heat to keep you comfortable.





229521



229721

Adjustable Elastic  
Hidden Drawcord

## FEATHERLIGHT SOFT SHELL JACKET

**229521** Adult XS-4XL MSRP 62.20**229721** Ladies XS-3XL MSRP 62.20

- Featherlight soft shell fabric is 100% bonded polyester with mechanical stretch and durable water-repellent finish
- Ladies' fit on 229721
- Raglan sleeves
- Front zippered pockets
- Dual inside pockets
- Spandex bound cuffs
- Open bottom with adjustable elastic hidden drawcord

ARCTIC HAZE  
PRINT  
19MBLACK  
080CARBON  
J96DARK GREEN  
035MAROON  
045NAVY  
065ROYAL  
060SCARLET  
083





**COORDINATING  
PULLOVER**  
**6863 | 6864**



**MICRO-LITE FLEECE FULL ZIP JACKET**

<b>6861</b>	Adult	XS-3XL	MSRP 30.60
		4XL in select colors	
<b>6862</b>	Ladies	XS-2XL	MSRP 30.60
		3XL in select colors	

- Eco-Revive product featuring 5.3 ounce, 70% recycled polyester/30% polyester
- Ladies' fit on style 6862
- Hanger loop label
- Set-in sleeves
- Side seam pockets
- Open bottom

Available in Adult 4XL & Ladies 3XL



BLACK  
080

GRAPHITE  
059

NAVY  
065

OYSTER  
53T

Available in Adult 4XL  
& Ladies 3XL



ROYAL  
060

SCARLET  
083



ATHLETIC  
GREY  
009

DK GREEN  
035

MAROON  
745

STORM  
932



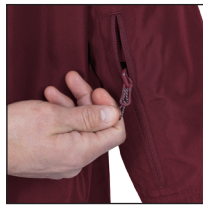




Back vent with decoration access



P303



Zippered pocket on wearer's left sleeve



Hidden drawcord at waist on Ladies



Jacket folds up into zippered pocket

229582



229559

223815



229782

221398



### PACKABLE FULL ZIP JACKET

<b>229582</b>	Adult	S-4XL	MSRP 49.00
<b>229782</b>	Ladies	XS-3XL	MSRP 49.00

- Micron™ polyester is a lightweight, wind/water-resistant fabric
- Ladies' fit on style 229782
- Adjustable hood with inside concealed cord locks
- Reflective trim
- Back vent with adjustable closure for full decoration access
- Set-in sleeves
- Front zippered pockets
- Spandex bound cuffs
- Open bottom
- Adjustable elastic hidden drawcord at bottom hem (Adult only)



ATHLETIC GREY  
009

BLACK  
080

CARBON  
J96

DARK GREEN  
035



MAROON  
745

NAVY  
065

PURPLE  
747

Available in  
Adult Only



ROYAL  
060

SCARLET  
083

OLIVE  
039





Snap  
Front



## HERITAGE JACKET

**229140** Adult S-4XL MSRP 77.80  
5XL in select colors

- Duraweave™ fabric has a smooth oxford nylon surface
- Quilted nylon lining
- 15mm matte painted enamel snap front
- Set-in sleeves
- Front pockets
- Inside valuables pocket
- Rib-trim collar, cuffs, and bottom hem

Available in 4XL-5XL



BLACK/  
WHITE  
420

NAVY/  
WHITE  
301

ROYAL/  
WHITE  
280

SCARLET/  
WHITE  
408

BLACK  
080

NAVY  
065



BLACK/  
LT GOLD/  
WHITE  
R21

BLACK/  
SCARLET/  
WHITE  
R20

DARK  
GREEN/  
LT GOLD/  
WHITE  
S06

MAROON/  
WHITE  
380

BLACK/  
ORANGE/  
WHITE  
611

NAVY/  
LT GOLD/  
WHITE  
S30



P207



## SATIN BASEBALL JACKET/STRIPED TRIM

**3610** Adult XS-3XL MSRP 54.20

- Outer shell of 100% nylon satin
- Lined with 100% polyester brushed tricot
- Raglan sleeves
- Front pockets
- Rib-knit collar, cuffs and bottom



COLUMBIA  
BLUE/  
WHITE  
293

LIGHT  
PINK/  
WHITE  
465

METALLIC  
GOLD/  
WHITE  
259

METALLIC  
SILVER/  
WHITE  
260



BLACK/  
WHITE  
420

RED/  
WHITE  
400

ROYAL/  
WHITE  
280

NAVY/  
WHITE  
301





## HOODED COACH'S JACKET

**3102**    Adult    S-3XL    MSRP 36.00

- Outer shell of 100% nylon taffeta
- Lined with 100% polyester brushed tricot
- Tear away label
- Hood with drawcord
- Raglan sleeves
- Front pockets
- Elastic cuffs



GOLD  
025

BLACK  
080

DARK  
GREEN  
035



MAROON  
045

NAVY  
065

RED  
040



ROYAL  
060

WHITE  
005







## NYLON COACH'S JACKET/LINED

**3100** Adult S-3XL MSRP 28.40  
4XL & 5XL in select colors

**3101** Youth XS-L MSRP 27.40

- Outer shell of 100% nylon taffeta
- Lined with 100% polyester brushed tricot
- Tear away label
- Raglan sleeves
- Front pockets
- Elastic cuff

Available in Adult  
S-5XL & Youth



BLACK  
080

NAVY  
065

Available in Adult S-3XL



DARK GREEN  
035

MAROON  
045

RED  
040

ROYAL  
060

OLIVE DRAB  
GREEN  
179



KELLY  
030

WHITE  
005

BROWN  
079

GRAPHITE  
059

KHAKI  
010



POWER  
PINK  
809

COLUMBIA  
BLUE  
089

ORANGE  
029

GOLD  
025

PURPLE  
050

LIGHT  
PINK  
095







SERIESX COLLECTION

229728



229731

229528



229431

229531



Embossed  
Pattern Inset

COORDINATING  
PULLOVER

229533 | 229633 | 229733

COORDINATING  
JACKET

223558 | 223658 | 223758



SERIESX HOODED JACKET

<b>229528</b>	Adult	S-3XL	MSRP 68.00
<b>229628</b>	Youth	S-XL	MSRP 67.00
<b>229728</b>	Ladies	XS-2XL	MSRP 68.00

- Micron™ polyester is a lightweight, wind/water-resistant fabric
- 100% polyester micromesh lining
- Ladies' fit on 229728
- 3-piece hood with spandex binding
- Set-in sleeves
- Front zippered pockets
- Elastic cuffs
- Adjustable bottom hem with hidden shockcord closure in right pocket on Adult
- Alternate pants: 229095



Ladies Fit

Available in Adult & Ladies Only



BLACK/  
WHITE  
420

CARBON/  
WHITE  
F52

NAVY/  
WHITE  
301

BLACK/  
ORANGE  
423

BLACK/  
SCARLET  
500

DARK GREEN/  
WHITE  
438

MAROON/  
WHITE  
380

NAVY/  
SCARLET  
S20

ROYAL/  
WHITE  
280

SCARLET/  
WHITE  
408



SERIESX PANT

<b>229531</b>	Adult	S-3XL	MSRP 54.60
<b>229631</b>	Youth	S-XL	MSRP 53.60
<b>229731</b>	Ladies	XS-2XL	MSRP 54.60

- Micron™ polyester is a lightweight, wind/water-resistant fabric
- 100% polyester micromesh lining
- Ladies' fit on 229731
- Exposed brushed elastic waistband with inside drawcord
- Side seam pockets
- Tapered leg
- Articulated seaming at the knees
- Covered elastic cuff at leg opening
- Zipper on outside lower leg



Ladies Fit

Zipper on  
Outside  
Lower Leg

Available in Adult/  
Ladies Only



BLACK  
080

CARBON  
J96

NAVY  
065

BLACK/  
WHITE  
420

ROYAL/  
WHITE  
280

SCARLET/  
WHITE  
408

DARK GREEN/  
WHITE  
438

MAROON/  
WHITE  
380

Available in  
Adult Only



Back Welt Pocket





Ladies Fit



Zipper on  
Outside  
Lower Leg

Ladies Fit



## RETRO GRADE JACKET

<b>229561</b>	Adult	S-3XL	MSRP 66.60
<b>229661</b>	Youth	S-XL	MSRP 65.60
<b>229761</b>	Ladies	XS-2XL	MSRP 66.60

- Dry-Excel™ 100% polyester performance terry
- Ladies' fit on style 229761
- 3-piece mesh lined hood with spandex binding
- Raglan sleeves
- Front pockets
- Spandex bound cuff



## RETRO GRADE PANT

<b>229562</b>	Adult	S-3XL	MSRP 55.60
<b>229662</b>	Youth	S-XL	MSRP 54.60
<b>229762</b>	Ladies	XS-2XL	MSRP 55.60

- Dry-Excel™ 100% polyester performance terry
- Ladies' fit on style 229762
- Exposed brushed elastic waistband with inside drawcord
- Front pockets
- Back welt pocket
- Tapered leg





229561



229562



Back

229761

### MORE FROM THE RETRO COLLECTION

229762



224076 | 224276  
224077 | 224277  
224376 | 224377  
Retro Basketball Uniform



221021 | 221221  
Retro Baseball Jersey



## LIMITLESS JACKET Dry-Excel™

<b>229579</b>	Adult	S-3XL	MSRP 50.20
<b>229679</b>	Youth	S-XL	MSRP 49.20
<b>229779</b>	Ladies	XS-2XL	MSRP 50.20

- Dry-Excel™ 100% polyester wicking double knit with mesh texture
- Ladies' fit on 229779
- Raglan sleeves
- Front zippered pockets



BLACK/WHITE 420    NAVY/WHITE 301    CARBON/WHITE F52    ROYAL/WHITE 280    SCARLET/WHITE 408



BLACK/BLACK 425    MAROON/WHITE 380    DARK GREEN/WHITE 438    BLACK/WHITE/GOLD 532    NAVY/WHITE/GOLD W57



BLACK/WHITE/ORANGE W12    BLACK/WHITE/SCARLET C39    NAVY/WHITE/SCARLET W53

## LIMITLESS PANT Dry-Excel™

<b>229580</b>	Adult	S-3XL	MSRP 45.60
<b>229680</b>	Youth	S-XL	MSRP 44.60
<b>229780</b>	Ladies	XS-2XL	MSRP 45.60

- Dry-Excel™ 100% polyester wicking double knit mesh texture
- Pinhole micromesh back knee inserts
- Ladies' fit on 229780
- Covered elastic waistband with inside drawcord
- Side seam pockets
- Tapered leg
- Zipper on outside lower leg



BLACK/BLACK 425    BLACK/WHITE 420    CARBON/WHITE F52    NAVY/WHITE 301    ROYAL/WHITE 280    SCARLET/WHITE 408

Available in Adult & Ladies Only



DARK GREEN/WHITE 438    MAROON/WHITE 380



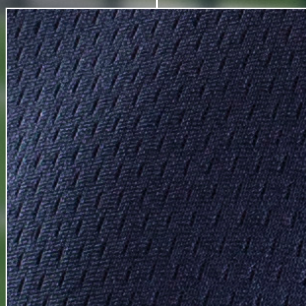
COORDINATING HOODIE  
**222584**







229007



Mesh



Zippered leg







## MEDALIST 2.0 COLLECTION



### COORDINATING PULLOVER

4386 | 4388

### MEDALIST JACKET 2.0

<b>4395</b>	Adult	S-3XL	MSRP 40.60
<b>4396</b>	Youth	XS-L	MSRP 39.60
<b>4397</b>	Ladies	XS-2XL	MSRP 40.60

- Heavyweight 100% polyester matte brushed tricot
- Ladies' fit on style 4397
- Heat sealed label
- Set-in sleeves
- Front seam pockets
- Alternate pants 7726/7728, 7731/7732/7733



BLACK/ GOLD 421  
BLACK/ ORANGE 423  
BLACK/ RED 424  
BLACK/ VEGAS GOLD 255  
BLACK/ WHITE 420  
DARK GREEN/ WHITE 438  
GRAPHITE/ WHITE R04



KELLY/ WHITE 340  
MAROON/ WHITE 380  
NAVY/ VEGAS GOLD 256  
NAVY/ WHITE 301  
PURPLE/ WHITE 450  
RED/ WHITE 400  
ROYAL/ WHITE 280

### MEDALIST PANT 2.0

<b>7760</b>	Adult	S-3XL	MSRP 36.20
<b>7761</b>	Youth	XS-L	MSRP 35.20
<b>7762</b>	Ladies	XS-2XL	MSRP 36.20

- Heavyweight 100% polyester matte brushed tricot
- Ladies' fit on style 7762
- Heat sealed label
- Covered elastic waistband with inside drawcord
- Side seam pockets
- Zipper on outside lower leg



BLACK/ GOLD 421  
BLACK/ ORANGE 423  
BLACK/ RED 424  
BLACK/ WHITE 420  
DARK GREEN/ WHITE 438  
GRAPHITE/ WHITE R04  
KELLY/ WHITE 340



MAROON/ WHITE 380  
NAVY/ VEGAS GOLD 256  
NAVY/ WHITE 301  
PURPLE/ WHITE 450  
RED/ WHITE 400  
ROYAL/ WHITE 280  
BLACK/ VEGAS GOLD 255

Available in  
Adult &  
Ladies only



Back Yoke





## WELD COLLECTION



## COORDINATING PULLOVER 229596



Dropped Tail



## WELD FULL ZIP JACKET

**229543** Adult XS-3XL MSRP 71.20

- 90% polyester/10% spandex
- Zippered sleeve pocket with media port
- Raglan sleeves
- Locking front and dual inside pockets
- Spandex bound cuff
- Open bottom with adjustable elastic hidden drawcord
- Alternate pants: 229559/229799



BLACK/  
WHITE  
420

CARBON/  
WHITE  
F52

FOREST/  
WHITE  
436

KELLY/  
WHITE  
340

MAROON/  
WHITE  
380



NAVY/  
WHITE  
301

ORANGE/  
WHITE  
320

ROYAL/  
WHITE  
280

SCARLET/  
WHITE  
408

WHITE/  
CARBON  
E94



## WELD PANT

**229544** Adult XS-3XL MSRP 59.00

- 90% polyester/10% spandex
- Covered elastic waistband with inside drawcord
- Side seam pockets
- Zipper on outside of lower leg
- Straight leg



BLACK/  
WHITE  
420

CARBON/  
WHITE  
F52

NAVY/  
WHITE  
301





**WELD  
COLLECTION**



Pleated Back Detailing



Thumbhole

Reflective  
Accent Around  
Front Zipper



Covered  
Elastic Cuff



## LADIES WELD JACKET

**229743** Ladies XS-2XL MSRP 71.20

- 90% polyester/10% spandex
- Low profile collar
- Raglan sleeves
- Locking welt front pockets
- Dual inside pockets
- Elastic cuffs and bottom



BLACK  
080

CARBON  
J96

NAVY  
065

WHITE  
005



## LADIES WELD JOGGER

**229799** Ladies XS-2XL MSRP 60.00

- 90% polyester/10% spandex
- Covered elastic waistband with outside drawcord and silicone dipped tips (inside drawcord on XS-S)
- Front pockets
- Covered elastic cuff at leg opening
- Tapered leg
- Coordinating Adult 229559



BLACK  
080

CARBON  
J96

NAVY  
065





223846



Back

Thumbhole

Designed to  
fit over knee pads

## LADIES FREE FORM JACKET

<b>371262</b>	Ladies	S-3XL	MSRP 67.00
<b>371263</b>	Girls	S-XL	MSRP 66.00

- 78% polyester/22% spandex heavyweight knit
- 90% polyester/10% spandex heather fabric inserts
- Partial storm flap and zipper garage
- Set-in sleeves
- Front zippered pockets
- Dual inside pockets
- Thumbholes
- Dropped tail

ROYAL/  
CARBON  
HEATHER  
H73SCARLET/  
CARBON  
HEATHER  
H72NAVY/  
CARBON  
HEATHER  
H71BLACK/  
CARBON  
HEATHER  
H70CARBON/  
CARBON  
HEATHER  
09M

## LADIES FREE FORM PANT

<b>371562</b>	Ladies	S-3XL	MSRP 60.40
	Tall	ST-XLT	MSRP 64.40
<b>371563</b>	Girls	S-XL	MSRP 59.40

- 78% polyester/22% spandex heavyweight knit
- 90% polyester/10% spandex heather fabric inserts
- High waisted, covered waistband
- Front pockets
- Zipper on outside lower leg
- Tapered leg
- Designed to be worn over knee pads

NAVY/  
CARBON  
HEATHER  
H71BLACK/  
CARBON  
HEATHER  
H70BLACK/  
BLACK  
425CARBON/  
CARBON  
HEATHER  
09M

## COORDINATING BAG

**327895**  
Free Form Backpack





Decoration  
Available  
on PVC



Air mesh vented back  
for breathability



Detachable Hood with  
Drawcord on Adult



## CLEAR RAIN JACKET

<b>3160</b>	Adult	S-2XL	MSRP 26.40
<b>3161</b>	Youth	S-L	MSRP 25.40

- 100% PVC
- Unisex fit
- Front zipper with outside storm flap and snaps
- Raglan sleeves
- Front pockets with flaps and snap closure
- Open bottom



CLEAR  
100



Side Seam  
Pockets

## TAPERED LEG PANT

<b>7731</b>	Adult
<b>XS-3XL</b>	MSRP 39.00
<b>7732</b>	Youth
<b>S-L</b>	MSRP 38.00
<b>7733</b>	Ladies
<b>XS-2XL</b>	MSRP 39.00

- Heavyweight 100% polyester matte brushed tricot
- Covered elastic waistband with inside drawcord
- Tapered fit
- Back yoke
- Zipper on outside lower leg

Available in [ Adult only ] Available in [ Ladies only ]



RED  
040



ROYAL  
060



BLACK  
080



NAVY  
065

Ladies Fit



Side Seam  
Pockets

## SOLID BRUSHED TRICOT PANT

<b>7726</b>	Adult
<b>S-3XL</b>	MSRP 39.00
<b>7728</b>	Ladies
<b>S-2XL</b>	MSRP 39.00

- Heavyweight 100% polyester matte brushed tricot
- Covered elastic waistband with inside drawcord
- Back yoke
- Zipper on outside lower leg



BLACK  
080

Ladies Fit