

ASB | 2023

AUGUSTASPORTSWEAR.COM





HOLLOWAY

EST. 1946







Front zippered pockets



223740

223540



Warmth **6** / 10 Weight **Mid**

NEW

ALPINE SWEATER FLEECE 1/4 ZIP PULLOVER

223540	Adult	S-3XL	MSRP 60.00
223740	Ladies	XS-2XL	MSRP 60.00

- Eco-Revive® product featuring 80% recycled polyester/20% polyester
- Ladies' fit on style 223740
- Hanger loop label
- Set-in sleeves
- Front zippered pockets
- Open bottom



BLACK HEATHER
K34

GRAPHITE HEATHER
R13

NAVY HEATHER
U22

OLIVE HEATHER
49N

SILVER HEATHER
R12



Warmth **3** / 10 Weight **Light**

NEW COOLCORE® 1/4 ZIP PULLOVER

222140	Adult	S-3XL	MSRP 34.00
222240	Youth	S-XL	MSRP 33.00
222340	Ladies	XS-2XL	MSRP 34.00

- 88% polyester/12% elastane Coolcore® with color secure® technology that helps prevent dye migration
- Ladies' fit on style 222340
- Garment protects against the sun with 50+ UPF
- Tagless label
- Set-in sleeves with rolled forward shoulder seam



ATHLETIC GREY 009 BLACK 080 COLUMBIA BLUE 089 DARK GREEN 035



IRON 980 MAROON 745 NAVY 065 OLIVE 039



PURPLE 747 ROYAL 060 SCARLET 083 WHITE 005

222340



222702

222140



222594



CHILL FLEECE 2.0 COLLECTION

6852



6854



ecoREVIVE®
SUSTAINABLE FABRIC TECHNOLOGY

Back



MORE FROM THE CHILL FLEECE 2.0 COLLECTION



COORDINATING
1/2 ZIP PULLOVER
6855 | 6856 | 6857



COORDINATING
FULL ZIP HOODIE
6858 | 6859 | 6860



COORDINATING
HEADBAND
6893

Warmth **6** / 10

Weight **Mid**

NEW

CHILL FLEECE VEST 2.0

6852	Adult	S-3XL	MSRP 40.00
6854	Ladies	XS-2XL	MSRP 40.00

- Eco-Revive® product featuring 8 ounce, 70% recycled polyester/30% polyester
- Ladies' fit on style 6854
- Hanger loop label
- Full front zipper with zipper garage to keep elements out
- Front zippered pockets
- Spandex bound sleeve holes
- Open bottom



BLACK
080

GRAPHITE
059

NAVY
065

OLIVE
039

OYSTER
531

STORM
932



Back



223747



223547

229559

Warmth **6 / 10** Weight **Mid**

NEW

V-STREET FULL-ZIP JACKET

223547	Adult	S-3XL	MSRP 64.00
223647	Youth	S-XL	MSRP 63.00
223747	Ladies	S-2XL	MSRP 64.00

- 100% polyester double-knit
- Ladies fit on style 223747
- Woven label
- Front zipper
- Set-in sleeves
- Front pockets
- Dual inside pockets
- Striped rib-knit collar, cuffs and bottom band



ATHLETIC HEATHER/
WHITE
152

BLACK/
WHITE
420

NAVY/
WHITE
301

222702



ROYAL/
WHITE
280

SCARLET/
WHITE
408

WHITE/
ATHLETIC HEATHER
510



Warmth **5** / 10

Weight **Light**

NEW

SERIESX FULL-ZIP JACKET

223558	Adult	S-3XL	MSRP 56.00
223658	Youth	S-XL	MSRP 55.00
223758	Ladies	XS-2XL	MSRP 56.00

- Micron™ polyester is a lightweight, wind/water-resistant fabric
- 100% polyester micromesh lining
- Ladies fit on style 223758
- Woven label
- Front zipper
- Set-in sleeves
- Front zippered pockets
- Elastic cuffs
- Adjustable bottom hem with hidden shockcord closure in right pocket on Adult and Ladies



BLACK
080

CARBON
J96

NAVY
065

MORE FROM THE SERIESX COLLECTION



229528 | 229628 | 229728
SeriesX Hooded Jacket



229531 | 229631 | 229731
SeriesX Pant



229533 | 229633 | 229733
SeriesX Pullover



223558

229531



223758

229731



Warmth **5** / 10 Weight **Mid**

NEW

CROSTOWN JACKET

223530	Adult	S-3XL	MSRP 42.00
223630	Youth	S-XL	MSRP 41.00
223730	Ladies	S-2XL	MSRP 42.00

- Dry-Excel™ 100% polyester double-knit
- Dry-Excel™ 100% polyester mesh inserts
- Ladies' fit on style 223730
- Woven label
- Front zipper
- Set-in sleeves
- Front zippered pockets
- Open bottom

BLACK/
BLACK
425BLACK/
WHITE
420GRAPHITE/
WHITE
R04NAVY/
WHITE
301ROYAL/
WHITE
280SCARLET/
WHITE
408WHITE/
BLACK
226

Warmth **5** / 10 Weight **Mid**

NEW

CROSTOWN PANT

223531	Adult	S-3XL	MSRP 40.00
223631	Youth	S-XL	MSRP 39.00
223731	Ladies	S-2XL	MSRP 40.00

- Dry-Excel™ 100% polyester double-knit
- Dry-Excel 100% polyester mesh inserts
- Ladies' fit on style 222731
- Woven label
- Covered elastic waistband with inside drawcord
- Side seam pockets
- Tapered leg
- Zipper on outside lower leg

BLACK/
BLACK
425BLACK/
WHITE
420GRAPHITE/
WHITE
R04NAVY/
WHITE
301ROYAL/
WHITE
280SCARLET/
WHITE
408WHITE/
BLACK
226



COORDINATING JACKET

DEVIATE JACKET
229539 | 229739



Warmth **6** / 10

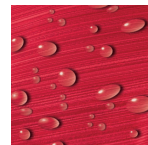
Weight **Mid**

DEVIATE PULLOVER

229541 Adult XS-3XL MSRP 86.60
229741 Ladies XS-2XL MSRP 86.60

- Dry-Excel™ bonded polyester is a scuba bonded fabric featuring a tonal striation
- Poly/spandex storm cuffs for weather protection
- Raglan sleeves
- Front zippered pockets
- Zipper garage and storm flap

Reflective
Zipper Pull



Water
Repellent

Template X3



Ladies Fit



BLACK
080

CARBON
J96

NAVY
065

ROYAL
060

SCARLET
083

WHITE
005

FOREST
038

MAROON
045

Only available in Adult



P303



Back



R20SWM

LEGEND COLLECTION



Side zippered pockets



Warmth **5** 10

Weight **Light**

LEGEND HOODED PULLOVER

R20DSM Adult S-4XL MSRP 76.80

- 90% polyester/10% spandex lightweight stretch woven fabric with durable water-repellent finish to keep you dry
- High collar, half-zip pullover style zipper garage
- 3-piece hood with drawcord
- Set-in sleeves
- Side zippered pockets
- Inside mesh valuables pocket
- Spandex bound cuffs
- Open bottom



BLACK
BLK

DK GREEN/
BLACK
A0J

NAVY
NAV



ROYAL/
BLACK
72T

STEALTH
SHL

STEALTH/
BLACK
ANN



TRUE RED/
BLACK
A7B

WHITE/
NAVY
WNA

WHITE/
STEALTH
XDE



CHILL FLEECE 2.0 COLLECTION

ecoREVIVE.
SUSTAINABLE FABRIC TECHNOLOGY



Warmth	6	10	Weight	Mid
--------	---	----	--------	-----

CHILL FLEECE 2.0 1/2 ZIP PULLOVER

6855	Adult	S-3XL	MSRP 45.80
6856	Youth	XS-L	MSRP 44.80
6857	Ladies	XS-2XL	MSRP 45.80

- Eco-Revive® product featuring 8 ounce, 70% recycled polyester/30% polyester
- Ladies' fit on style 6857
- Hanger loop label
- Set-in sleeves
- Front zippered pockets with spandex binding detail
- Spandex bound cuffs
- Open bottom



Available in Adult
& Ladies Only



Available in Adult & Ladies Only



MORE FROM THE CHILL FLEECE 2.0 COLLECTION



6852
6854
Chill Fleece
2.0 Vest



6858
6859
6860
Chill Fleece 2.0
Full Zip Hoodie



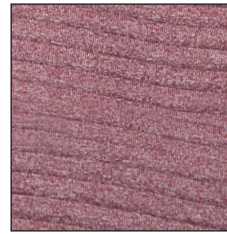
6893
Chill Fleece
2.0 Headband

COORDINATING FULL-ZIP
229588



229794

229594



3D Seamless insulated knit traps heat to keep you warm while 3D channels release excess heat to keep you comfortable.



Pleated Back Detail on Ladies



Warmth **5** / 10

Weight **Mid**



3D REGULATE PULLOVER

229594 Adult
XS-3XL MSRP 70.80
229794 Ladies
XS-2XL MSRP 70.80

- 100% polyester heathered knit with seamless quilted insulation for added warmth
- Wik-Sof™ performance fleece lower body
- Ladies' fit on style 229794
- Half-zip pullover style with storm flap and zipper garage
- Set-in sleeves
- Front zippered pockets



BLACK
HEATHER/
BLACK
K64

FOREST
HEATHER/
FOREST
K65

MAROON
HEATHER/
MAROON
K69



NAVY
HEATHER/
NAVY
K64

ROYAL
HEATHER/
ROYAL
K66



SILVER
HEATHER/
SILVER
K60E

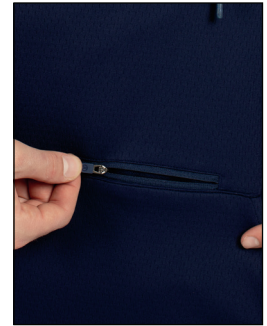
SCARLET
HEATHER/
SCARLET
K67



**LIMITLESS
COLLECTION**



Drawstring Hood



Front Zippered Valuables Pocket



Warmth **5** / 10

Weight **Mid**

LIMITLESS 1/4 ZIP HOODIE

222584 Adult XS-3XL MSRP 53.80

- Dry-Excel™ 100% polyester wicking double knit mesh texture
- High collar, half-zip pullover style zipper garage
- Pinhole mesh lined hood with drawcord
- Raglan sleeves
- Front pouch pocket
- Half-elastic cuffs
- Dropped tail



BLACK/
BLACK
425

BLACK/
WHITE
420

CARBON/
CARBON
D87I

CARBON/
WHITE
F52

DARK GREEN/
WHITE
438



MAROON/
WHITE
380

NAVY/
NAVY
S14

NAVY/
WHITE
301

ROYAL/
WHITE
280

SCARLET/
WHITE
408

MORE FROM THE LIMITLESS COLLECTION

229580



229579 | 229679 | 229779
Limitless Jacket



229580 | 229680 | 229780
Limitless Pant



Template TW70



Embossed Pattern



Warmth **5** / 10

Weight **Light**

BIONIC WINDSHIRT

229019 Adult S-3XL MSRP 60.20

- Micron™ polyester is a lightweight, wind/water resistant fabric
- Sleeves and arms are embossed with the Screenmesh print
- Jersey and taffeta lining for added warmth
- Raglan sleeves
- Front pockets
- Elastic cuffs
- Open bottom with adjustable elastic hidden drawcord
- Coordinating pants: 229531 | 229631 | 229731, 229095



BLACK/ LT GOLD R16
BLACK/ ORANGE 423
BLACK/ SCARLET 500
BLACK/ VEGAS GOLD 255
BLACK/ WHITE 420
CARBON/ BLACK E84
CARDINAL/ WHITE 409
DK GREEN/ WHITE 438
KELLY/ WHITE 340



MAROON/ WHITE 380
NAVY/ LT GOLD S28
NAVY/ SCARLET S20
NAVY/ VEGAS GOLD 256
NAVY/ WHITE 301
PURPLE/ WHITE 450
ROYAL/ LT GOLD S67
ROYAL/ WHITE 280
SCARLET/ WHITE 408



MEDALIST 2.0 COLLECTION

COORDINATING JACKET

4395 | 4396 | 4397



Ladies Fit

Warmth **5** / 10

Weight **Light**

MEDALIST 2.0 PULLOVER

4386 Adult S-3XL MSRP 38.40

4388 Ladies XS-2XL MSRP 38.40

- Heavyweight 100% polyester matte brushed tricot
- Tagless label
- Set-in sleeves
- Front pouch pocket
- Coordinating pants: 7731 | 7732 | 7733, 7726 | 7728, 7760 | 7761 | 7762



BLACK/ GOLD 421
BLACK/ RED 424
BLACK/ VEGAS GOLD 255
BLACK/ WHITE 420
DARK GREEN/ WHITE 438
GRAPHITE/ WHITE R04
KELLY/ WHITE 340

Available in Adult only



NAVY/ WHITE 301
PURPLE/ WHITE 450
RED/ WHITE 400
ROYAL/ WHITE 280
BLACK/ ORANGE 423
MAROON/ WHITE 380
NAVY/ VEGAS GOLD 256



Warmth **4** / 10

Weight **Light**

WELD HYBRID PULLOVER

229596 Adult S-3XL MSRP 74.00
4XL in select colors

- 90% polyester/10% spandex, 4-way stretch woven fabric front panel and back yoke
- Flex-Soft™ smooth, lightweight, polyester knit with superior abrasion-resistance & high mechanical stretch on lower body, sleeves and back
- Low profile collar
- Set-in sleeves
- Spandex bound cuff
- Alternate pant: 229544



MAROON/
CARBON/
E92

ORANGE/
CARBON/
E96

PURPLE/
CARBON/
E2N

KELLY/
CARBON/
E4D

CARBON/
CARBON/
E67

FOREST/
CARBON/
E79

Available in Adult 4XL



BLACK/
CARBON/
D86

NAVY/
CARBON/
E81

WHITE/
CARBON/
E94

ROYAL/
CARBON/
E86

SCARLET/
CARBON/
E90



Warmth **3** / 10

Weight **Light**

WELD JOGGERS

229559 Adult XS-3XL MSRP 60.00
229799 Ladies XS-2XL MSRP 60.00

- 90% polyester/10% spandex
- Covered elastic waistband with outside drawcord and silicone dipped tips (inside drawcord on XS-S)
- Front pockets
- Back locking welt pocket on Adult
- Tapered leg
- Zipper on outside lower leg
- Articulated seaming at the knees



NAVY
065

BLACK
080

CARBON
J96

WELD
COLLECTION



Zippered valuables
pocket with reflective
metallic silicone



Back

Side
Pockets





Warmth **4** / 10 Weight **Light**

WIZARD PULLOVER

229016 Adult S-3XL MSRP 70.00

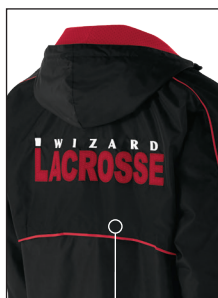
- Micron™ polyester is a lightweight, wind/water resistant fabric
- Micromesh lined nylon body & hood
- Adjustable mesh lined hood with eyelets and concealed cord locks
- Front zippered pockets
- Half-elastic cuffs
- Open bottom with adjustable elastic hidden drawcord



BLACK/ LIGHT GOLD R16
BLACK/ ORANGE 423
BLACK/ SCARLET 500
BLACK/ WHITE 420
MAROON/ WHITE 380
NAVY/ LIGHT GOLD S28



NAVY/ WHITE 301
ROYAL/ WHITE 280
SCARLET/ WHITE 408
CARBON/ WHITE F52
DARK GREEN/ WHITE 438



Adjustable Vent
For Decoration
Access



Warmth **4** / 10 Weight **Light**

SABLE PANT

229095 Adult XS-3XL MSRP 52.80

- Micron™ lightweight polyester shell
- Mesh (UPPER LEG) and nylon lining (LOWER LEG)
- Covered elastic waistband with inside drawcord
- Front pockets
- Back pockets with zipper
- Zipper on outside lower leg and bottom snaps



BLACK/ ORANGE 423
BLACK/ SCARLET 500
BLACK/ WHITE 420
NAVY/ WHITE 301
ROYAL/ WHITE 280
SCARLET/ WHITE 408
DK GREEN/ WHITE 438
MAROON/ WHITE 380



BLACK/ BLACK 425
CARBON/ CARBON D67
NAVY/ NAVY S14



Dropped Tail



SERIESX COLLECTION



229733

229533

229556
pg. 145



Embossed Pattern

COORDINATING WARM-UP

223558 | 223658 | 223758
229528 | 229628 | 229728
229531 | 229631 | 229731



Warmth

4/10

Weight

Light

SERIESX PULLOVER

229533 Adult XS-3XL MSRP 59.60
 4XL in select colors
229633 Youth S-XL MSRP 58.60
229733 Ladies XS-2XL MSRP 59.60

- Micron™ polyester is a lightweight, wind/water-resistant fabric
- Embossed inserts for subtle textured pattern
- Micromesh lined nylon body
- Taffeta lined sleeves
- Ladies' fit on 229733
- Set-in sleeves
- Front pockets
- Spandex bound cuffs
- Dropped tail with side vents
- Alternate pant: 229531 | 229631 | 229731, 229095



Side seam zipper for easy on/off

Available in 4XL, Ladies & Youth



BLACK
080

CARBON
J96

WHITE
005

Available in Adult & Ladies



NAVY
065

ROYAL
060

SCARLET
083



BLACK/
ORANGE
423

BLACK/
SCARLET
500



CARDINAL
J36

CARBON/
GOLD
43M

COLUMBIA
BLUE
089

DARK
GREEN
035

KELLY
030

MAROON
045

NAVY/
GOLD
302

NAVY/
SCARLET
S20

PURPLE
050



Jacket folds up into zippered front pocket

COORDINATING JACKET & HOODIE

229542 & 222552 | 222652



Warmth **4** / 10 Weight **Light**

RANGE PACKABLE PULLOVER

229554	Adult	S-3XL	MSRP 48.00
		4XL in select colors	
229654	Youth	S-XL	MSRP 47.00
		Select Colors	

- Tech weave printed Micron™ lightweight polyester, wind/water resistant fabric
- Adjustable 3 piece hood with eyelets and concealed cord locks on Adult only (elastic on youth)
- Raglan sleeves
- Half-elastic cuffs
- Adjustable bottom hem with hidden shockcord closure on right side of pocket (on Adult only)
- Coordinating pants: 229095



Warmth **2** / 10 Weight **Light**

PULLOVER JACKET IN A POCKET

3130	Adult	S-3XL	MSRP 30.20
-------------	-------	-------	------------

- Outer shell of 100% nylon taffeta
- Hood with drawcord
- Set-in sleeves
- Elastic cuffs



Jacket folds up into zippered front pocket concealed under flap.



Adjustable
Hood



Warmth **4** / 10

Weight **Light**



PACK PULLOVER

229534 Adult
S-3XL MSRP 39.00

4XL in select colors

229634 Youth
S-XL MSRP 38.00

- 100% polyester MicroTec soft micro denier fabric with PU coating for water-resistance
- Adjustable 3-piece hood on Adult only (elastic on youth)
- Set-in sleeves
- Spandex bound cuff
- Adjustable bottom hem with hidden shockcord closure in right pocket (on Adult)



Jacket folds up into
zippered front pocket



Back



121C





**COORDINATING
JACKET**

6861 | 6862

Warmth **4** / 10

Weight **Mid**

MICRO-LITE FLEECE 1/4 ZIP PULLOVER

6863 Adult XS-3XL MSRP 26.40
4XL in select colors

6864 Ladies XS-2XL MSRP 26.40
3XL in select colors

- Eco-Revive® product featuring 5.3 ounce, 70% recycled polyester/30% polyester
- Ladies' fit on style 6864
- Hanger loop label
- Set-in sleeves with shoulder insert
- Open bottom

Available in Adult 4XL & Ladies 3XL



Available in Adult 4XL & Ladies 3XL



6863



6864



Warmth 4 / 10

Weight Mid

MICRO POLY WINDSHIRT/LINED

3415 Adult S-4XL MSRP 29.40

- Outer shell of 100% micro polyester
- Lined with 100% polyester taffeta
- Rib-knit V-neck collar, cuffs and bottom band
- Set-in sleeves
- Side seam pockets



BLACK
080

RED
040

ROYAL
060

NAVY
065



Warmth 2 / 10

Weight Light

SHORT SLEEVE PULLOVER

872RVM Adult S-3XL MSRP 52.20
872RVB Youth S-XL MSRP 51.20

- 100% polyester lightweight breathability fabric
- Dri-Power® Moisture Wicking Technology
- Raglan sleeves
- Adjustable bottom hem with hidden shockcord closure (on Adult only)

Colors Available in Youth



BLACK/
WHITE
BWH

NAVY/
WHITE
NWH

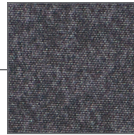
ROYAL/
WHITE
ROW

TRUE RED/
WHITE
TRW

WHITE/
STEALTH
XDE



RAIDER COLLECTION

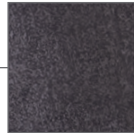


Tech Print
Pattern

Sleeve pocket
with silver media
port & silicone
welded zipper

Divided Front
Pouch Pocket

Spandex-
Bound
Cuffs



Tech Print
Pattern

Sleeve pocket
with silver media
port & silicone
welded zipper

Divided Front
Pouch Pocket

COORDINATING JACKET

229157 | 229357

Warmth **2** / 10

Weight **Ultra Light**



RAIDER PULLOVER

229155 Adult XS-3XL MSRP 66.00
4XL in select colors

- Ultra-lightweight Aero-Tec™ fabric provides both weather protection and zero noise, without the bulk
- Set-in sleeves

Available in Adult 4XL



CARBON
PRINT/
BLACK
H05

CARBON
PRINT/
GRAPHITE
H60

CARBON
PRINT/
NAVY
H03

CARBON
PRINT/
ROYAL
H02

CARBON
PRINT/
SCARLET
H01



CARBON
PRINT/
FOREST
H69

CARBON
PRINT/
MAROON
H06

CARBON
PRINT/
ORANGE
H07

CARBON
PRINT/
PURPLE
H68

CARBON
PRINT/
WHITE
H04

Warmth **2** / 10

Weight **Ultra Light**



RAIDER PULLOVER SHORT SLEEVE

229545 Adult S-3XL MSRP 60.60
4XL in select colors

- Ultra-lightweight Aero-Tec™ fabric provides both weather protection and zero noise, without the bulk
- Set-in sleeves

Available in Adult 4XL



CARBON
PRINT/
BLACK
H05

CARBON
PRINT/
NAVY
H03

CARBON
PRINT/
ROYAL
H02

CARBON
PRINT/
SCARLET
H01

CARBON
PRINT/
WHITE
H04



CARBON
PRINT/
FOREST
H69

CARBON
PRINT/
GRAPHITE
H60

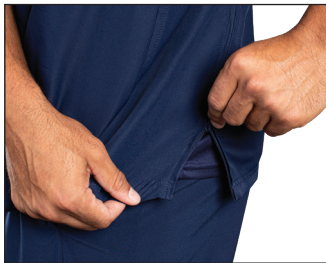
CARBON
PRINT/
MAROON
H06

CARBON
PRINT/
ORANGE
H07

CARBON
PRINT/
PURPLE
H68



Stretch mesh at center back
for maximum mobility



Side seam zipper for easy on/off

Warmth **2** / 10

Weight **Ultra Light**

CLUBHOUSE SHORT SLEEVE PULLOVER

229581 Adult
S-4XL MSRP 44.80

5XL in select colors

229681 Youth
S-XL MSRP 43.80

- Areo-Tec 100% polyester
- Low profile collar
- Set-in sleeves
- Side seam pockets




ES474

229556

Available in 5XL



BLACK/
WHITE
420

GRAPHITE/
WHITE
R04

NAVY/
WHITE
301

WHITE/
GRAPHITE
751

ROYAL/
WHITE
280

SCARLET/
WHITE
408

DARK
GREEN/
WHITE
438

MAROON/
WHITE
380

BLACK/
ORANGE
423

NAVY/
SCARLET
S20



Side zipper for easy on/off



Back



ES471



Warmth **2** / 10 Weight **Ultra Light**

NEW

CLUBHOUSE PULLOVER



229595	Adult	S-3XL	MSRP 48.80
229695	Youth	S-XL	MSRP 47.80

- Areo-Tec 100% polyester
- Woven label
- Quarter zip pullover style with zipper garage
- Low profile collar
- Set-in sleeves
- Side seam pockets
- Spandex bound cuffs



BLACK/
BLACK
425

BLACK/
ORANGE
423

BLACK/
WHITE
420

DARK GREEN/
WHITE
438



GRAPHITE/
WHITE
R04

NAVY/
NAVY
S14

NAVY/
SCARLET
S20

NAVY/
WHITE
S01



ROYAL/
WHITE
280

SCARLET/
WHITE
408

WHITE/
GRAPHITE
751





Ladies Fit



Warmth **3** / **10** Weight **Light**

DRI-POWER® LIGHTWEIGHT 1/4 ZIP PULLOVER

QZ7EAM Adult XS-3XL MSRP 40.00
QZ7EAX Ladies S-2XL MSRP 40.00

- 100% polyester 2-tone interlock
- Lightweight stretch fabric
- Dri-Power® Moisture Wicking Technology
- Odor protection
- Tagless label
- Set-in sleeves

QZ7EAM

QZ7EAX



Available in
Adult only



BLACK
BLK

CARDINAL
CRD

DARK GREEN
DGR

NAVY
NAV

MAROON
MAR

PURPLE
PUR

ROYAL
ROY

STEALTH
SHL

TRUE RED
TRR



PRISM
COLLECTION

Honeycomb Knit

MORE FROM THE PRISM COLLECTION



222568
222768
Prism Polo



222576
222776
Prism Bold Polo



Warmth **2** / 10 Weight **Light**

PRISM BOLD 1/4 ZIP PULLOVER

222591	Adult	S-3XL	MSRP 39.40
222791	Ladies	XS-2XL	MSRP 39.40

- Dry-Excel™ 4.8 ounce 100% polyester wicking honeycomb knit
- Garment protects against the sun with 50+ UPF
- Ladies' fit on style 222791
- Tagless label
- Set-in sleeves



Back



222591

222791



BLACK/
CARBON
D86

BLACK/
GOLD
421

BLACK/
ORANGE
423

BLACK/
SCARLET
500

MAROON/
WHITE
380

NAVY/
GOLD
302

BLACK/
WHITE
420

CARBON/
WHITE
F52

NAVY/
WHITE
301

ROYAL/
WHITE
280

SCARLET/
WHITE
408



ELECTRIFY COOLCORE® COLLECTION



Warmth **2/10** Weight **Light**

ELECTRIFY COOLCORE® 1/2 ZIP PULLOVER

222574	Adult	S-3XL	MSRP 39.40
222674	Youth	S-XL	MSRP 38.40
222774	Ladies	XS-3XL	MSRP 39.40

- 87% polyester/13% elastane heathered wicking knit with Coolcore® technology
- 92% polyester knitted mesh/8% elastane wicking knit inserts with Coolcore® technology
- Garment protects against the sun with 50+ UPF on body, (25+ on mesh inserts)
- Ladies' fit on style 222774
- Tagless label
- Raglan sleeves with thumbholes for warmth on Ladies'

222774



Thumbholes
on Ladies



Back

222574

MORE FROM THE ELECTRIFY COOLCORE® COLLECTION



222571
222671
222771
Electrify
Coolcore® Tee



222570
222670
222770
Electrify
Coolcore® Long
Sleeve Tee



222589
222689
Electrify
Coolcore®
Hoodie



222572
222772
Electrify
Coolcore® Polo



ATHLETIC GREY
SSM

BLACK
HEATHER
K94

NAVY
HEATHER
U22

ROYAL
HEATHER
U55

*WHITE
005

OLIVE
HEATHER
49N

DARK GREEN
HEATHER
V97

GOLD
HEATHER
E70

KELLY
HEATHER
U10

MAROON
HEATHER
T09

ORANGE
HEATHER
V98

PURPLE
HEATHER
U86

SCARLET
HEATHER
T20

Available in
Adult only

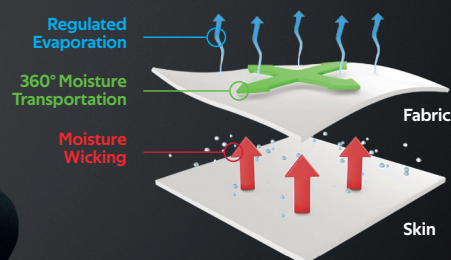
Available in Adult & Ladies only



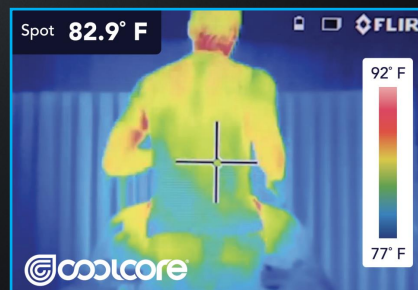
Coolcore® is engineered to distribute moisture quickly throughout the garment.

As the moisture spreads it dries faster to keep you cool and comfortable, and has UPF 50 sun protection

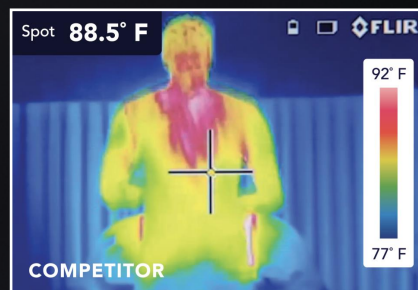
Patented Fabric Technology



Technology Comparison



The same athlete after 20 minutes of activity



STAY COOL

229394



SHADOW TONAL HEATHER COLLECTION



Warmth **2** / 10

Weight **Light**

SHADOW TONAL HEATHER 1/4 ZIP PULLOVER

2908	Adult	S-3XL	MSRP 35.20
2909	Ladies	XS-2XL	MSRP 35.20

- 100% polyester heathered wicking knit top body, collar and sleeves
- 100% polyester wicking knit solid bottom body
- Tagless label
- Set-in sleeves
- Dropped tail bottom on Ladies'



BLACK
080

DARK
GREEN
035

MAROON
045

NAVY
065

ORANGE
029

Available in
Ladies Only



PURPLE
050

RED
040

ROYAL
060

SILVER
099

POWER
PINK
809



Warmth **2** / 10

Weight **Light**

ATTAIN 1/4 ZIP PULLOVER

2785	Adult	S-3XL	MSRP 19.40
		4XL-5XL in select colors	
2786	Youth	S-XL	MSRP 18.40
2787	Ladies	XS-2XL	MSRP 19.40
		3XL in select colors	

- 100% polyester wicking knit with color secure® technology that helps prevent dye migration
- Tear away label
- Set-in sleeves
- Dropped tail bottom on Ladies'

Available in Adult 4XL-5XL
& Ladies 3XL



BLACK
080

GRAPHITE
059

NAVY
065

WHITE
005

DARK
GREEN
035

RED
040

ROYAL
060

SILVER
099

Available in Adult & Ladies only



COLUMBIA
BLUE
089

CARDINAL
J36

GOLD
025

KELLY
030

MAROON
045

ORANGE
029

PURPLE
050

VEGAS
GOLD
023

Available in
Ladies Only



POWER
PINK
809



ATTAIN COLLECTION



Ladies Fit



MOMENTUM TEAM COLLECTION



Warmth **2** / 10

Weight **Light**

MOMENTUM TEAM 1/4 ZIP PULLOVER

223500	Adult	S-4XL	MSRP 24.40
223600	Youth	S-XL	MSRP 23.40
223700	Ladies	S-3XL	MSRP 24.40

- Dry-Excel™ 100% polyester interlock smooth knit with color secure® technology that helps prevent dye migration
- Garment protects against the sun with 45+ UPF
- Ladies' fit on style 223700
- Tagless label
- Set-in sleeves with angled shoulder seam for mobility and comfort



BLACK/
IRON
62U

BLACK/
ROYAL
426

BLACK/
SCARLET
500

BLACK/
WHITE
420



NAVY/
WHITE
301

ROYAL/
WHITE
280

SCARLET/
WHITE
408

Available in Adult & Ladies only



BLACK/
DARK GREEN
429

BLACK/
MAROON
486

BLACK/
ORANGE
423

BLACK/
PURPLE
487

BLACK/
KELLY
90M



GOLD/
ROYAL
240

ORANGE/
NAVY
77T

SCARLET/
NAVY
W86

IRON/
WHITE
590

MORE FROM THE MOMENTUM TEAM COLLECTION

223501
223601
223701
Momentum
Team Tee



223502
223602
223702
Momentum
Team Long
Sleeve Tee



222540
222640
222740
Momentum
Team
Hoodie



P820
Momentum
Team Cap



**ULTRA SOFT
COTTONY FEEL!**



**FREESTYLE SUBLIMATED
1/4 ZIP PULLOVER**

228107	Adult	S-3XL	MSRP 64.00
228207	Youth	S-XL	MSRP 63.00
228307	Ladies	S-3XL	MSRP 64.00

Speckled
Gradient

Rectangular
Prism



Watercolor Camo II



Spectator





For available design lines visit
augustasportswear.com/sublimation



OUTERWEAR | FREESTYLE SUBLIMATION

ULTRA SOFT COTTONY FEEL!



FREESTYLE SUBLIMATED
COTTON-TOUCH
POLY 1/4 ZIP PULLOVER

228145	Adult	S-3XL	MSRP 65.00
228245	Youth	S-XL	MSRP 64.00
228345	Ladies	S-3XL	MSRP 65.00

Water Color
Camo II

Wavy
Vertical
Stripe



Tie Dye



Gradient

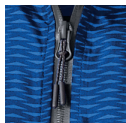


Two-Way
Front Zipper

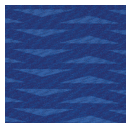
Elasticized Hook &
Loop Fastener Cuffs



RANGE COLLECTION



Reflective
Zipper Pull &
Matte Tips



Tech
Weave
Print



Template
W3



Warmth

9 / 10

Weight

Heavy

CONQUEST JACKET

229162 Adult S-3XL MSRP 144.00

- Duraweav™ fabric has a smooth nylon surface
- Anti-pill microfleece and quilted nylon lining
- Adjustable 3-piece hood with eyelets and concealed cord locks
- Knee length
- Set-in sleeves
- Front right chest media pocket with inside hidden cord port
- Front pockets with microfleece lining



BLACK
080



NAVY
065



ROYAL
060



SCARLET
083



Warmth

7 / 10

Weight

Mid

RANGE JACKET

229542 Adult S-3XL MSRP 82.60

- Tech weave printed Micron™ lightweight polyester
- Omni-Sof™ microfleece lined
- Taffeta lined sleeves
- Adjustable 3 piece hood with eyelets & concealed cord locks (on Adult only) (elastic on youth)
- Raglan sleeves
- Shiny coated front pockets with black pull cord
- Interior decoration zipper
- Inside zippered valuables pocket
- Half-elastic cuffs
- Open bottom with adjustable elastic hidden drawcord on Adult sizes only
- Coordinating pants: 229095



CARBON
J96



NAVY/
CARBON
E81



FOREST/
CARBON
E79



MAROON/
CARBON
E92



ROYAL/
CARBON
E86



SCARLET/
CARBON
E90



SCARLET
083



WHITE/
CARBON
E94



Dropped Tail



Template FS48

Zipper on Outside Lower Leg and Bottom Snaps



Warmth 8/10

Weight Heavy

CHARGER JACKET

229059 Adult S-4XL MSRP 91.60

229259 Youth S-XL MSRP 90.60

- Micro-Cord™ is a woven polyester fabric with a raised, ribbed texture
- Omni-Sof™ microfleece lining
- Nylon sleeve lining
- Adjustable hood with eyelets and concealed cord locks on Adult sizes only (Youth has elastic)
- Raglan sleeves
- Front zippered pockets
- Open bottom with adjustable elastic hidden drawcord (on Adult only)

Available in Adult Only



BLACK/
WHITE
420

DK GREEN/
WHITE
438

NAVY/
WHITE
301

SCARLET/
WHITE
408

KELLY/
WHITE
340

ROYAL/
WHITE
280

Available in Adult Only



BLACK/
LT GOLD
R16

BLACK/
SCARLET
500

BLACK/
ORANGE
423

CARBON/
WHITE
F52

MAROON/
WHITE
380

NAVY/
LT GOLD
S28



Warmth 6/10

Weight Mid

PACER PANT

229056 Adult S-3XL MSRP 59.40

- Micro-Cord™ woven polyester fabric with a raised, ribbed texture
- Mesh lined upper leg and nylon lining lower leg
- Front pockets
- Back pockets with zipper



NAVY
065

ROYAL
060

SCARLET
063

BLACK
080

CARBON
J96



P500



Back



P303



Fully Reversible



Detachable hood



NEW YOUTH SIZE

Warmth

7/10

Weight

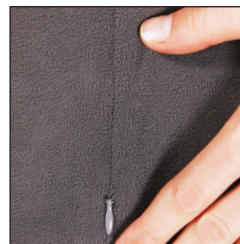
Heavy

TURNABOUT REVERSIBLE JACKET

229587	Adult	XS-3XL	MSRP 79.00
229687	Youth	S-XL	MSRP 78.00
229787	Ladies	XS-2XL	MSRP 79.00

- Micron™ polyester is a lightweight, wind/water-resistant fabric

- Lightweight fleece inner layer
- Ladies' fit on style 229787
- Set-in sleeves
- Front zippered pockets on both sides
- Elastic cuffs
- Open bottom



Interior all-access decoration zipper

Available in Adult & Youth only



ATHLETIC GREY/CARBON 48E

BLACK/CARBON D86

DARK GREEN/CARBON C84

MAROON/CARBON E92

NAVY/CARBON E81

OLIVE/BLACK 85E

ORANGE/BLACK 321

ROYAL/CARBON E86

SCARLET/BLACK 48E

SCARLET/CARBON E90



Warmth **7** / 10

Weight **Heavy**



HOMEFIELD JACKET

229111 Adult S-3XL MSRP 71.60

229211 Youth S-XL MSRP 70.60

- Micron™ polyester is a lightweight, wind/water resistant fabric
- Adjustable hood with eyelets & concealed cord locks (on Adult only)
- Raglan sleeves
- Half-elastic cuffs and bottom
- Coordinating pants: 229531 | 229631 | 229731



BLACK/
BLACK
425

BLACK/
ORANGE
423

BLACK/
SCARLET
500

BLACK/
WHITE
420

NAVY/
WHITE
301

ROYAL/
WHITE
280

Available in Adult Only



SCARLET/
WHITE
408

NAVY/
NAVY
S14

MAROON/
WHITE
380

DK GREEN/
WHITE
438

PURPLE/
WHITE
450

Warmth **7** / 10

Weight **Heavy**



HOODED TAFFETA JACKET/FLEECE LINED

3280 Adult S-4XL MSRP 63.20

3281 Youth XS-L MSRP 62.20

- Outer shell of 100% nylon taffeta
- Body, sleeves and hood lined with 75% polyester/13% rayon/12% cotton grey heather fleece
- Hood with drawcord and sliders (youth has elastic)
- Set-in sleeves
- Reinforced slash front pockets with zippers
- Elastic cuffs and bottom



BLACK
080

RED
040

ROYAL
060

NAVY
065



MAROON
045

PURPLE
050

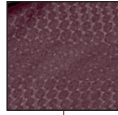
KELLY
030

DARK
GREEN
035



Adjustable Quilted Hood

Embossed Pattern



Half-Elastic Cuffs



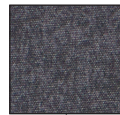
RAIDER COLLECTION

COORDINATING PULLOVERS

229545

229155 | 229655

Raider Print



Dual Front Chest Zippered Pocket

Dual Zippered Pockets

Ladies Fit

Warmth

7/10

Weight

Mid



BIONIC HOODED JACKET

229017 Adult S-3XL MSRP 73.80

229217 Youth S-XL MSRP 72.80

- Micron™ polyester lightweight, wind/water resistant fabric
- Embossed Micron blocking at hood, shoulders, & top sleeves with the Screenmesh pattern
- Quilted, polyester, taffeta lining
- Adjustable quilted hood with eyelets & concealed cord locks (on Adult only)
- Interior decoration zipper
- Inside zippered pocket
- Dual front zippered pockets
- Coordinating pants: 229531 | 229631 | 229731



BLACK/
CARBON
D86

CARBON/
BLACK
E84

Available in
Adult Only



NAVY/
CARBON
E81

DK GREEN/
CARBON
C84

MAROON/
CARBON
E92

Warmth

6/10

Weight

Mid



RAIDER SOFT SHELL JACKET

229157 Adult S-3XL MSRP 97.20
4XL in select colors

229357 Ladies XS-2XL MSRP 97.20
3XL in select colors

- Lightweight, softshell outer fabric in 96% polyester, 4% spandex bonded to brushed back polyester
- Adjustable hood with drawcord (not available on Ladies' XS)
- Internal storm cuffs for weather protection
- Open bottom with adjustable elastic hidden drawcord

Available in Adult 4XL



CARBON
PRINT/
BLACK
H05

CARBON
PRINT/
NAVY
H03

Available in Ladies 3XL



CARBON
PRINT/
BLACK
H05

CARBON
PRINT/
WHITE
H04

Available in Adult Only



CARBON
PRINT/
FOREST
H69

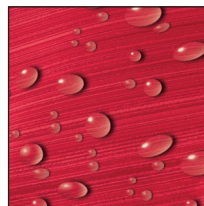
CARBON
PRINT/
PURPLE
H68

CARBON
PRINT/
MAROON
H06

CARBON
PRINT/
ORANGE
H07

CARBON
PRINT/
ROYAL
H02

CARBON
PRINT/
SCARLET
H01



Water Resistant

COORDINATING PULLOVER

229541 | 229741



Warmth **6** / 10

Weight **Mid**

DEVIATE JACKET

229539	Adult	XS-3XL	MSRP 100.20
229739	Ladies	XS-2XL	MSRP 100.20 in select colors

- Dry-Excel™ bonded polyester is a scuba bonded fabric featuring a tonal striation
- Poly/spandex storm cuffs
- Storm flap and zipper garage
- Raglan sleeves
- Front zippered pockets
- Dual inside pockets

Available in Ladies



BLACK
080

CARBON
J96

NAVY
065

Available in Ladies



WHITE
005

ROYAL
060

SCARLET
083



Warmth 6 / 10

Weight Mid

POTOMAC JACKET

229527 Adult S-3XL MSRP 82.40

- Micro-Cord™ woven polyester fabric with a raised, ribbed texture
- Micromesh lined body and sleeves
- Concealed adjustable hood with eyelets and concealed cord locks stows when not in use
- Back vent with adjustable closure for full decoration access
- Front zippered pockets
- Dual inside pockets
- Rib-knit collar and cuffs
- Open bottom with adjustable elastic hidden drawcord (on Adult)
- Dropped tail
- Coordinating pants: 229056



Back



229527

229431

229056



COORDINATING PULLOVER
6855 | 6856 | 6857

Warmth **6** / **10** Weight **Mid**

CHILL FLEECE 2.0 FULL ZIP HOODIE

6858	Adult	S-3XL	MSRP 52.00
6859	Youth	XS-L	MSRP 51.00
6860	Ladies	XS-2XL	MSRP 52.00

- Eco-Revive product featuring 8 ounce, 70% recycled polyester/30% polyester
- Ladies' fit on style 6860
- Hanger loop label
- 3-piece hood with spandex binding
- Set-in sleeves
- Front zippered pockets with spandex binding detail
- Dual inside pockets
- Self-fabric cuffs
- Open bottom



BLACK
080

GRAPHITE
059

NAVY
065

ROYAL
060

Available in Adult & Ladies Only



SCARLET
083



DK GREEN
035

MAROON
745

Available in Adult & Ladies Only



OLIVE
039

OYSTER
537

STORM
932



P304

6893

6858

6860

229559

221398



104C



229716



229516





Welded
Quilting

REPREVE®

Products are made with
100% post-consumer
recycled plastic bottles.



REPREVE® ECO COLLECTION

OUTERWEAR | FULL-ZIP



UP TO
7

229513
Repreve®
Eco Vest



UP TO
6

229713
Ladies Repreve®
Eco Vest



UP TO
8

229516
Repreve®
Eco Jacket



UP TO
7

229716
Ladies Repreve®
Eco Jacket



UP TO
6

222575
Repreve®
Eco Polo



UP TO
4

222775
Ladies Repreve®
Eco Polo



UP TO
8

222577
Repreve®
Eco Hoodie



UP TO
1

P203
Repreve®
Eco Cap

Warmth **5** / 10 Weight **Light**

REPREVE® ECO JACKET

229516 Adult XS-3XL MSRP 84.20
229716 Ladies XS-3XL MSRP 84.20

- 100% polyester MicroTec woven face with durable water-repellent finish to keep you dry
- Made from Repreve® 50% recycled polyester fill quilting
- Weld engineered quilting that's decoration friendly
- 78% polyester/22% spandex inserts, peached for softness
- Ladies' fit on 229716
- Front zippered pockets
- Half-elastic cuffs
- Dropped tail



BLACK
080

CARBON
J96

NAVY
065

OLIVE
039

STORM
932

TUNDRA HAZE
PRINT
20M

Products are made with
100% post-consumer
recycled plastic bottles.



Each of our Repreve® partnered
garments features soft,
sustainable fabric technology.



Warmth **5** / 10

Weight **Light**

REPREVE® ECO VEST

229513	Adult	S-3XL	MSRP 68.00
229713	Ladies	XS-3XL	MSRP 68.00

- 100% polyester MicroTec woven face with durable water-repellent finish to keep you dry
- Made from Repreve® 50% recycled polyester fill quilting for lightweight warmth
- Weld engineered quilting that's decoration friendly
- Ladies' fit on style 229713
- Front zipper with antique nickel zipper pull and storm flap
- Side seam pockets
- Dropped tail on Ladies' style 229713



BLACK 080 CARBON 196 NAVY 065 OLIVE 039 STORM 932 TUNDRA HAZE PRINT 20M WHITE 005



COLLECTION

CONTROL YOUR COMFORT

COORDINATING PULLOVER

229594 | 229794



Warmth **5** / 10

Weight **Mid**

3D REGULATE JACKET

229588 Adult XS-3XL MSRP 80.00

- 100% polyester heathered knit with seamless quilted insulation for added warmth
- Wik-Sof™ performance fleece lower body & hood
- 3-piece adjustable mesh lined hood
- Set-in sleeves
- Front zippered pockets
- Spandex bound cuff
- Dropped tail



BLACK
HEATHER/
BLACK
K54

NAVY
HEATHER/
NAVY
K64

ROYAL
HEATHER/
ROYAL
K66

FOREST
HEATHER/
FOREST
K95



SILVER
HEATHER/
SILVER
60E

MAROON
HEATHER/
MAROON
K69



3D seamless insulated knit traps heat to keep you warm while 3D channels release excess heat to keep you comfortable.



229521



229721

Adjustable Elastic
Hidden Drawcord

Warmth	5	10	Weight	Light
--------	---	----	--------	-------

FEATHERLIGHT SOFT SHELL JACKET

229521 Adult XS-4XL MSRP 62.20

229721 Ladies XS-3XL MSRP 62.20

- Featherlight soft shell fabric is 100% bonded polyester with mechanical stretch and durable water-repellent finish
- Ladies' fit on 229721
- Raglan sleeves
- Front zippered pockets
- Dual inside pockets
- Spandex bound cuffs
- Open bottom with adjustable elastic hidden drawcord

ARCTIC HAZE
PRINT
19MBLACK
080CARBON
J96DARK GREEN
035MAROON
045NAVY
065ROYAL
060SCARLET
083



COORDINATING
PULLOVER
6863 | 6864



Warmth **4** / 10 Weight **Mid**

MICRO-LITE FLEECE FULL ZIP JACKET

6861	Adult	XS-3XL	MSRP 30.60
		4XL in select colors	
6862	Ladies	XS-2XL	MSRP 30.60
		3XL in select colors	

- Eco-Revive product featuring 5.3 ounce, 70% recycled polyester/30% polyester
- Ladies' fit on style 6862
- Hanger loop label
- Set-in sleeves
- Side seam pockets
- Open bottom

Available in Adult 4XL & Ladies 3XL



BLACK
080

GRAPHITE
059

NAVY
065

OYSTER
53T

Available in Adult 4XL
& Ladies 3XL



ROYAL
060

SCARLET
083



ATHLETIC
GREY
009

DK GREEN
035

MAROON
745

STORM
932

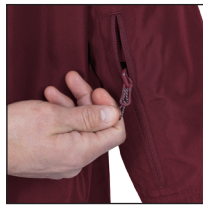




Back vent with decoration access



P303



Zippered pocket on wearer's left sleeve



Hidden drawcord at waist on Ladies



Jacket folds up into zippered pocket



Warmth **4** / 10 Weight **Light**

PACKABLE FULL ZIP JACKET

229582 Adult S-4XL MSRP 49.00
229782 Ladies XS-3XL MSRP 49.00

- Micron™ polyester is a lightweight, wind/water-resistant fabric
- Ladies' fit on style 229782
- Adjustable hood with inside concealed cord locks
- Reflective trim
- Back vent with adjustable closure for full decoration access
- Set-in sleeves
- Front zippered pockets
- Spandex bound cuffs
- Open bottom
- Adjustable elastic hidden drawcord at bottom hem (Adult only)



ATHLETIC GREY 009

BLACK 080

CARBON 196

DARK GREEN 035



MAROON 745

NAVY 065

PURPLE 747

Available in Adult Only



ROYAL 060

SCARLET 083

OLIVE 039

229582

223815

229782

221398

229559



Snap
Front



Warmth **7** 10

Weight **Heavy**

HERITAGE JACKET

229140 Adult S-4XL MSRP 77.80
5XL in select colors

- Duraweave™ fabric has a smooth oxford nylon surface
- Quilted nylon lining
- 15mm matte painted enamel snap front
- Set-in sleeves
- Front pockets
- Inside valuables pocket
- Rib-trim collar, cuffs, and bottom hem

Available in 4XL-5XL



BLACK/
WHITE
420

NAVY/
WHITE
301

ROYAL/
WHITE
280

SCARLET/
WHITE
408

BLACK
080

NAVY
065



BLACK/
LT GOLD/
WHITE
R21

BLACK/
SCARLET/
WHITE
R20

DARK
GREEN/
LT GOLD/
WHITE
S06

MAROON/
WHITE
380

BLACK/
ORANGE/
WHITE
611

NAVY/
LT GOLD/
WHITE
S30



Warmth **5** 10

Weight **Mid**

SATIN BASEBALL JACKET/STRIPED TRIM

3610 Adult XS-3XL MSRP 54.20

- Outer shell of 100% nylon satin
- Lined with 100% polyester brushed tricot
- Raglan sleeves
- Front pockets
- Rib-knit collar, cuffs and bottom



COLUMBIA
BLUE/
WHITE
293

LIGHT
PINK/
WHITE
465

METALLIC
GOLD/
WHITE
259

METALLIC
SILVER/
WHITE
260



BLACK/
WHITE
420

RED/
WHITE
400

ROYAL/
WHITE
280

NAVY/
WHITE
301



P207





Warmth **5** / 10 Weight **Light**

HOODED COACH'S JACKET

3102 Adult S-3XL MSRP 36.00

- Outer shell of 100% nylon taffeta
- Lined with 100% polyester brushed tricot
- Tear away label
- Hood with drawcord
- Raglan sleeves
- Front pockets
- Elastic cuffs



GOLD
025

BLACK
080

DARK
GREEN
035



MAROON
045

NAVY
065

RED
040



ROYAL
060

WHITE
005





Warmth **5** / 10 Weight **Light**

NYLON COACH'S JACKET/LINED

3100 Adult S-3XL MSRP 28.40
4XL & 5XL in select colors

3101 Youth XS-L MSRP 27.40

- Outer shell of 100% nylon taffeta
- Lined with 100% polyester brushed tricot
- Tear away label
- Raglan sleeves
- Front pockets
- Elastic cuff

Available in Adult
S-3XL & Youth



OLIVE DRAB
GREEN
179

Available in Adult
S-5XL & Youth



BLACK
080



NAVY
065

Available in Adult S-3XL



MAROON
045



RED
040



ROYAL
060



DARK GREEN
035



KELLY
030



WHITE
005



BROWN
079



GRAPHITE
059



KHAKI
010



POWER
PINK
809



COLUMBIA
BLUE
089



ORANGE
029



GOLD
025



PURPLE
050



LIGHT
PINK
095





SERIESX COLLECTION

229728



229731

229528



229431

229531

Embossed
Pattern Inset

COORDINATING
PULLOVER

229533 | 229633 | 229733

COORDINATING
JACKET

223558 | 223658 | 223758



Ladies Fit

Warmth **5** / 10

Weight **Light**

SERIESX HOODED JACKET



229528	Adult	S-3XL	MSRP 68.00
229628	Youth	S-XL	MSRP 67.00
229728	Ladies	XS-2XL	MSRP 68.00

- Micron™ polyester is a lightweight, wind/water-resistant fabric
- 100% polyester micromesh lining
- Ladies' fit on 229728
- 3-piece hood with spandex binding
- Set-in sleeves
- Front zippered pockets
- Elastic cuffs
- Adjustable bottom hem with hidden shockcord closure in right pocket on Adult
- Alternate pants: 229095

Available in Adult & Ladies Only



BLACK/
WHITE
420

CARBON/
WHITE
F52

NAVY/
WHITE
301

BLACK/
ORANGE
423

BLACK/
SCARLET
500

DARK GREEN/
WHITE
438

MAROON/
WHITE
380

NAVY/
SCARLET
S20

ROYAL/
WHITE
280

SCARLET/
WHITE
408



Ladies Fit

Zipper on
Outside
Lower Leg

Warmth **5** / 10

Weight **Light**

SERIESX PANT



229531	Adult	S-3XL	MSRP 54.60
229631	Youth	S-XL	MSRP 53.60
229731	Ladies	XS-2XL	MSRP 54.60

- Micron™ polyester is a lightweight, wind/water-resistant fabric
- 100% polyester micromesh lining
- Ladies' fit on 229731
- Exposed brushed elastic waistband with inside drawcord
- Side seam pockets
- Tapered leg
- Articulated seaming at the knees
- Covered elastic cuff at leg opening
- Zipper on outside lower leg

Available in Adult/
Ladies Only

Available in
Adult Only



BLACK
080

CARBON
J96

NAVY
065

BLACK/
WHITE
420

ROYAL/
WHITE
280

SCARLET/
WHITE
408

DARK GREEN/
WHITE
438

MAROON/
WHITE
380



Back Welt Pocket



Ladies Fit



Zipper on
Outside
Lower Leg

Ladies Fit



Warmth **5** / 10

Weight **Light**

RETRO GRADE JACKET

229561	Adult	S-3XL	MSRP 66.60
229661	Youth	S-XL	MSRP 65.60
229761	Ladies	XS-2XL	MSRP 66.60

- Dry-Excel™ 100% polyester performance terry
- Ladies' fit on style 229761
- 3-piece mesh lined hood with spandex binding
- Raglan sleeves
- Front pockets
- Spandex bound cuff

Available in Adult & Ladies Only



Warmth **5** / 10

Weight **Light**

RETRO GRADE PANT

229562	Adult	S-3XL	MSRP 55.60
229662	Youth	S-XL	MSRP 54.60
229762	Ladies	XS-2XL	MSRP 55.60

- Dry-Excel™ 100% polyester performance terry
- Ladies' fit on style 229762
- Exposed brushed elastic waistband with inside drawcord
- Front pockets
- Back welt pocket
- Tapered leg

Available in Adult & Ladies Only



229561



229562



Back

229761

MORE FROM THE RETRO COLLECTION

229762



224076 | 224276
224077 | 224277
224376 | 224377
Retro Basketball Uniform



221021 | 221221
Retro Baseball Jersey

Warmth **5** / 10Weight **Light**

LIMITLESS JACKET



229579	Adult	S-3XL	MSRP 50.20
229679	Youth	S-XL	MSRP 49.20
229779	Ladies	XS-2XL	MSRP 50.20

- Dry-Excel™ 100% polyester wicking double knit with mesh texture
- Ladies' fit on 229779
- Raglan sleeves
- Front zippered pockets

BLACK/
WHITE
420NAVY/
WHITE
301CARBON/
WHITE
F52ROYAL/
WHITE
280SCARLET/
WHITE
408BLACK/
BLACK
425MAROON/
WHITE
380DARK
GREEN/
WHITE
438BLACK/
WHITE/
GOLD
532NAVY/
WHITE/
GOLD
W57BLACK/
WHITE/
ORANGE
W12BLACK/
WHITE/
SCARLET
C39NAVY/
WHITE/
SCARLET
W53Warmth **5** / 10Weight **Light**

LIMITLESS PANT



229580	Adult	S-3XL	MSRP 45.60
229680	Youth	S-XL	MSRP 44.60
229780	Ladies	XS-2XL	MSRP 45.60

- Dry-Excel™ 100% polyester wicking double knit mesh texture
- Pinhole micromesh back knee inserts
- Ladies' fit on 229780
- Covered elastic waistband with inside drawcord
- Side seam pockets
- Tapered leg
- Zipper on outside lower leg

BLACK/
BLACK
425BLACK/
WHITE
420CARBON/
WHITE
F52NAVY/
WHITE
301ROYAL/
WHITE
280SCARLET/
WHITE
408Available in Adult
& Ladies OnlyDARK
GREEN/
WHITE
438MAROON/
WHITE
380

COORDINATING HOODIE

222584





229007



Mesh



Zippered leg





MEDALIST 2.0 COLLECTION



COORDINATING PULLOVER

4386 | 4388

Warmth **5** / 10

Weight **Light**

MEDALIST JACKET 2.0

4395 Adult S-3XL MSRP 40.60

4396 Youth XS-L MSRP 39.60

4397 Ladies XS-2XL MSRP 40.60

- Heavyweight 100% polyester matte brushed tricot
- Ladies' fit on style 4397
- Heat sealed label
- Set-in sleeves
- Front seam pockets
- Alternate pants 7726/7728, 7731/7732/7733



BLACK/
GOLD
421

BLACK/
ORANGE
423

BLACK/
RED
424

BLACK/
VEGAS
GOLD
255

BLACK/
WHITE
420

DARK
GREEN/
WHITE
438

GRAPHITE/
WHITE
R04



KELLY/
WHITE
340

MAROON/
WHITE
380

NAVY/
VEGAS
GOLD
256

NAVY/
WHITE
301

PURPLE/
WHITE
450

RED/
WHITE
400

ROYAL/
WHITE
280

Warmth **5** / 10

Weight **Light**

MEDALIST PANT 2.0

7760 Adult S-3XL MSRP 36.20

7761 Youth XS-L MSRP 35.20

7762 Ladies XS-2XL MSRP 36.20

- Heavyweight 100% polyester matte brushed tricot
- Ladies' fit on style 7762
- Heat sealed label
- Covered elastic waistband with inside drawcord
- Side seam pockets
- Zipper on outside lower leg



BLACK/
GOLD
421

BLACK/
ORANGE
423

BLACK/
RED
424

BLACK/
WHITE
420

DARK
GREEN/
WHITE
438

GRAPHITE/
WHITE
R04

KELLY/
WHITE
340



MAROON/
WHITE
380

NAVY/
VEGAS
GOLD
256

NAVY/
WHITE
301

PURPLE/
WHITE
450

RED/
WHITE
400

ROYAL/
WHITE
280

BLACK/
VEGAS
GOLD
255

Available in
Adult &
Ladies only



Back Yoke

4395

4397

7762

7760



WELD COLLECTION



COORDINATING PULLOVER 229596



Warmth **3** / 10

Weight **Light**



Dropped Tail

WELD FULL ZIP JACKET

229543 Adult XS-3XL MSRP 71.20

- 90% polyester/10% spandex
- Zippered sleeve pocket with media port
- Raglan sleeves
- Locking front and dual inside pockets
- Spandex bound cuff
- Open bottom with adjustable elastic hidden drawcord
- Alternate pants: 229559/229799



BLACK/
WHITE
420

CARBON/
WHITE
F52

FOREST/
WHITE
436

KELLY/
WHITE
340

MAROON/
WHITE
380



NAVY/
WHITE
301

ORANGE/
WHITE
320

ROYAL/
WHITE
280

SCARLET/
WHITE
408

WHITE/
CARBON
E94



Warmth **3** / 10

Weight **Light**

WELD PANT

229544 Adult XS-3XL MSRP 59.00

- 90% polyester/10% spandex
- Covered elastic waistband with inside drawcord
- Side seam pockets
- Zipper on outside of lower leg
- Straight leg



BLACK/
WHITE
420

CARBON/
WHITE
F52

NAVY/
WHITE
301



**WELD
COLLECTION**



Pleated Back Detailing



Thumbhole

Reflective
Accent Around
Front Zipper



Covered
Elastic Cuff



Warmth **3** / 10

Weight **Light**

LADIES WELD JACKET

229743 Ladies XS-2XL MSRP 71.20

- 90% polyester/10% spandex
- Low profile collar
- Raglan sleeves
- Locking welt front pockets
- Dual inside pockets
- Elastic cuffs and bottom



BLACK
080

CARBON
J96

NAVY
065

WHITE
005



Warmth **3** / 10

Weight **Light**

LADIES WELD JOGGER

229799 Ladies XS-2XL MSRP 60.00

- 90% polyester/10% spandex
- Covered elastic waistband with outside drawcord and silicone dipped tips (inside drawcord on XS-S)
- Front pockets
- Covered elastic cuff at leg opening
- Tapered leg
- Coordinating Adult 229559



BLACK
080

CARBON
J96

NAVY
065



223846



Back

Thumbhole

Designed to
fit over knee pads

Warmth 3 / 10

Weight Mid

LADIES FREE FORM JACKET

371262	Ladies	S-3XL	MSRP 67.00
371263	Girls	S-XL	MSRP 66.00

- 78% polyester/22% spandex heavyweight knit
- 90% polyester/10% spandex heather fabric inserts
- Partial storm flap and zipper garage
- Set-in sleeves
- Front zippered pockets
- Dual inside pockets
- Thumbholes
- Dropped tail

ROYAL/
CARBON
HEATHER
H73SCARLET/
CARBON
HEATHER
H72NAVY/
CARBON
HEATHER
H71BLACK/
CARBON
HEATHER
H70CARBON/
CARBON
HEATHER
09M

Warmth 3 / 10

Weight Mid

LADIES FREE FORM PANT

371562	Ladies	S-3XL	MSRP 60.40
	Tall	ST-XLT	MSRP 64.40
371563	Girls	S-XL	MSRP 59.40

- 78% polyester/22% spandex heavyweight knit
- 90% polyester/10% spandex heather fabric inserts
- High waisted, covered waistband
- Front pockets
- Zipper on outside lower leg
- Tapered leg
- Designed to be worn over knee pads

NAVY/
CARBON
HEATHER
H71BLACK/
CARBON
HEATHER
H70BLACK/
BLACK
425CARBON/
CARBON
HEATHER
09M

COORDINATING BAG

327895
Free Form Backpack



Decoration
Available
on PVC



Air mesh vented back
for breathability



Detachable Hood with
Drawcord on Adult



Warmth **2** / 10

Weight **Light**

CLEAR RAIN JACKET

3160	Adult	S-2XL	MSRP 26.40
3161	Youth	S-L	MSRP 25.40

- 100% PVC
- Unisex fit
- Front zipper with outside storm flap and snaps
- Raglan sleeves
- Front pockets with flaps and snap closure
- Open bottom



CLEAR
100



Side Seam
Pockets

Warmth **5** / 10

Weight **Light**

TAPERED LEG PANT

7731	Adult
XS-3XL	MSRP 39.00
7732	Youth
S-L	MSRP 38.00
7733	Ladies
XS-2XL	MSRP 39.00

- Heavyweight 100% polyester matte brushed tricot
- Covered elastic waistband with inside drawcord
- Tapered fit
- Back yoke
- Zipper on outside lower leg

Available in **Adult only** | Available in **Ladies only**



RED
040



ROYAL
060



BLACK
080



NAVY
065

Ladies Fit



Side Seam
Pockets

Warmth **5** / 10

Weight **Light**

SOLID BRUSHED TRICOT PANT

7726	Adult
S-3XL	MSRP 39.00
7728	Ladies
S-2XL	MSRP 39.00

- Heavyweight 100% polyester matte brushed tricot
- Covered elastic waistband with inside drawcord
- Back yoke
- Zipper on outside lower leg



BLACK
080

Ladies Fit