



ASB | **NEW**
PRODUCTS





LINE UP

HEADWEAR	3
OUTERWEAR	10
FLEECE	12
TRAINING	15
LIFESTYLE	18
BASEBALL	22
SOFTBALL	26
FOOTBALL	30
POLOS	31
BAGS & ACCESSORIES	34
SUBLIMATION	35

ICON KEY



Dry-Excel™
Moisture evaporation
and wicking fabric



Water Resistant
Resists rain & water to keep
the body protected & dry



Color Secure®
Color Secure® helps
prevent dye migration



Moisture Management
Fabric wicks moisture away
keeping the body cool & dry



4-Way Stretch
Stretch properties allow
for increased mobility



Odor Resistant
Odor Resistant technology
keeps garments fresher longer



UPF
Garment protects against
harmful UV rays



www.augustasportswear.com





NEW

**PREMIUM LIGHTWEIGHT
PERFORATED PACFLEX
COOLCORE® CAP**



ES471 XS (6 3/8 - 6 7/8) MSRP 19.00
S/M (6 7/8 - 7 3/8)
L/XL (7 3/8 - 8)

- Lightweight stretch woven polyester/cotton blend with Coolcore® technology
- Perforated side panels
- Full-profile
- Pro-model
- Flat round bill
- Full crown eyelets
- Pro-stitched finish





WEEKENDER

NEW

WEEKENDER CAP

P421

Adult

One Size

MSRP 15.00

- Polyester/spandex woven
- Mid-profile
- 5-panel
- Slight curved visor
- Pro-stitched finish



HEADWEAR





Back

NEW

TRUCKER PACFLEX SNAPBACK CAP

P151 Adult
One Size MSRP 15.00

- Cotton blend
- Stretch trucker mesh
- Mid-profile
- Pro-model
- Curved visor
- Pro-stitched finish



BLACK/ 080 LT CHARCOAL/ 54S NAVY/ 065 BLACK/ GRAPHITE/ BLACK/ 092 BLACK/ WHITE/ BLACK/ 419 DARK GREEN/ WHITE/ DARK GREEN/ 121 GRAPHITE/ BLACK/ GRAPHITE/ 75Q GRAPHITE/ WHITE/ GRAPHITE/ 197 HEATHER GREY/ LT CHARCOAL/ AMBER GOLD/ 32P HEATHER GREY/ LT CHARCOAL/ HEATHER GREY/ 31P



HEATHER GREY/ LT CHARCOAL/ LT CHARCOAL/ 34P HEATHER GREY/ LT CHARCOAL/ MOSS/ 35P HEATHER GREY/ LT CHARCOAL/ OCEAN BLUE/ 36P HEATHER GREY/ WHITE/ HEATHER GREY/ 88S MOSS/ GRAPHITE/ MOSS/ 55S NAVY/ WHITE/ NAVY/ 122 OCEAN BLUE/ LT CHARCOAL/ OCEAN BLUE/ 37T ROYAL/ WHITE/ ROYAL/ 126 SILVER/ WHITE/ SILVER/ 79Q WHITE/ BLACK/ BLACK/ 505



HEADWEAR

STRETCHFIT



Back



BLACK/ GRAPHITE/ BLACK/ 092 BLACK/ WHITE/ BLACK/ 419 BRICK/ BEIGE/ BRICK/ 386 BUCK/ LT CHARCOAL/ BUCK/ 27T DEEP TEAL/ LT CHARCOAL/ DEEP TEAL/ 11W GRAPHITE/ BLACK/ GRAPHITE/ 75Q GRAPHITE/ WHITE/ GRAPHITE/ 197 GREY BROWN/ BEIGE/ GREY BROWN/ 431 HEATHER GREY/ WHITE/ BLACK/ 365 HEATHER GREY/ WHITE/ HEATHER GREY/ 88S WHITE/ NAVY/ RED/ 140



MOSS/ LT CHARCOAL/ MOSS/ 89V NAVY/ WHITE/ NAVY/ 122 OCEAN BLUE/ LT CHARCOAL/ OCEAN BLUE/ 37T RED/ WHITE/ RED/ 125 ROYAL/ WHITE/ ROYAL/ 126 RUST/ LT CHARCOAL/ RUST/ 437 SMOKE BLUE/ BEIGE/ SMOKE BLUE/ 51P WHITE/ LT CHARCOAL/ BUCK/ 383 WHITE/ LT CHARCOAL/ MOSS/ 50R WHITE/ LT CHARCOAL/ RUST/ 350

NEW

CONTRAST STITCH TRUCKER PACFLEX SNAPBACK CAP

P151S Adult One Size MSRP 15.00

- Polyester/cotton blend
- Stretch trucker mesh
- Mid-profile
- Pro-model
- Curved visor
- Pro-stitched finish
- Contrast stitching

P151 Detail

NEW COLORS

CONTRAST STITCH TRUCKER SNAPBACK CAP

104S Adult
One Size MSRP 10.20

- Cotton blend
- Trucker mesh
- Mid-profile
- Pro-model
- Curved visor
- Pro-stitched finish
- Contrast stitching on combo colors



Back



NEW
BLACK/
GRAPHITE/
R17

BLACK/
GRAPHITE/
Q92

BLACK/
WHITE/
419

BROWN/
KHAKI/
BROWN
14P

NEW
BUCK/
LT CHARCOAL/
BUCK
27T

DK GREEN/
WHITE/
DK GREEN
121



GRAPHITE/
BLACK/
GRAPHITE
75Q

GRAPHITE/
WHITE/
GRAPHITE
197

HEATHER GREY/
BLACK/
HEATHER GREY
87S

HEATHER GREY/
RED/
HEATHER GREY
89S

HEATHER GREY/
ROYAL/
HEATHER GREY
90S

NEW
HEATHER GREY/
WHITE/
BLACK
365



HEATHER GREY/
WHITE/
HEATHER GREY
88S

NEW
KHAKI/
BROWN/
KHAKI
40P

MOSS GREEN/
BEIGE/
MOSS GREEN
91S

NEW
MOSS/
LT CHARCOAL/
MOSS
89V

NEW
NAVY/
WHITE
301

NAVY/
WHITE/
NAVY
122



NEW
NAVY/
WHITE/
RED
118

RED/
WHITE/
RED
125

ROYAL/
WHITE/
ROYAL
126

NEW
SILVER/
WHITE/
SILVER
79Q

NEW
WHITE/
LT CHARCOAL/
TEAL
449

NEW
WHITE/
LT CHARCOAL/
MOSS
50R



CAMO STRETCHFIT



NEW

MOSSY OAK® LOW-PROFILE TRUCKER PACFLEX CAP

P691

Adult

MSRP 18.70

S/M (6 7/8 - 7 3/8)

L/XL (7 3/8 - 8)

- Polyester blend
- Stretch trucker mesh
- Sublimated Mossy Oak® camo front panels and visor
- Low-profile
- Pro-model
- Curved visor
- Front panel eyelets
- Pro-stitched finish



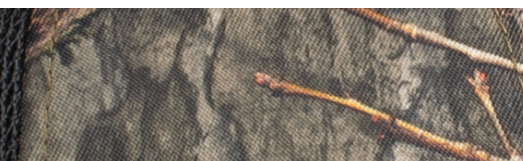
HEADWEAR

Truck mesh back



COUNTRY DNA/
LT CHARCOAL/
COUNTRY DNA
PA2

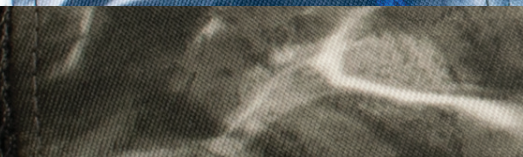
Front panels and visor



ELEMENTS AGUA BLACKFIN/
WHITE/
ELEMENTS AGUA BLACKFIN
PA3



ELEMENTS AGUA BLACKTIP/
BLACK/
ELEMENTS AGUA BLACKTIP
PA4



NEW BOTTOMLAND/
LT CHARCOAL/
NEW BOTTOMLAND
PA0



ORIGINAL BOTTOMLAND/
LT CHARCOAL/
ORIGINAL BOTTOMLAND
PA1



WAKEFORM EQUATOR/
WHITE/
WAKEFORM EQUATOR
PA5





MULTICAM®

MultiCam® | Proven In Combat

It's the officially issued camo pattern of the US Army for all Afghanistan operations in 2010



Back

NEW COLORS

MULTICAM® RIPSTOP CORDURA SNAPBACK CAP

M35 Adult One Size MSRP 18.00

- Nylon/cotton Ripstop Cordura
- Durable
- Sublimated Multicam® Camo on some colorways
- Mid-profile
- Pro-model
- Pro-stitched finish



MULTICAM BLACK 99S

TROPIC 65S

ARID 60S

MULTICAM ORIGINAL 61S



NEW BLACK 080

NEW RANGER GREEN P52

NEW WOLF GREY P51



MULTICAM BLACK/BLACK 64S

TROPIC/LODEN 66S

ARID/TAN 63S

MULTICAM ORIGINAL/BROWN 62S

NEW BLACK/LT. CHARCOAL/BLACK P77

NEW RANGER GREEN/LT. CHARCOAL/RANGER GREEN P75

NEW WOLF GREY/LT. CHARCOAL/WOLF GREY P74

NEW COLORS

MULTICAM® TRUCKER SNAPBACK CAP

M08 Adult One Size MSRP 18.00

- Nylon/cotton Ripstop Cordura
- Trucker mesh
- Durable
- Sublimated Multicam® Camo front panels on some colorways
- Mid-profile
- Pro-model



Back





LEGENDARY



PERFORATED LEGEND BOONIE

NEW

1964B Adult One Size MSRP 27.00

- 100% polyester
- Perforated side panels
- 3-inch wide brim
- Drawcord adjustable



HEADWEAR



CLUBHOUSE



Back

COORDINATING
CLUBHOUSE SHORT
SLEEVE PULLOVER
229581 | 229681



ES471
pg. 3



Warmth 2/10

Weight Ultra Light

NEW

CLUBHOUSE PULLOVER



229595	Adult	S-3XL	MSRP 48.80
229695	Youth	S-XL	MSRP 47.80

- Areo-Tec 100% polyester
- Woven label
- Quarter zip pullover style with zipper garage
- Low profile collar
- Set-in sleeves
- Side seam pockets
- Spandex bound cuffs



Side zipper for easy on/off



BLACK/
BLACK
425

BLACK/
ORANGE
423

BLACK/
WHITE
420

DARK GREEN/
WHITE
438

GRAPHITE/
WHITE
R04

NAVY/
NAVY
S14



NAVY/
SCARLET
S20

NAVY/
WHITE
301

ROYAL/
WHITE
280

SCARLET/
WHITE
408

WHITE/
GRAPHITE
751



229787



229587



NEW YOUTH SIZE

Warmth **7 / 10** Weight **Heavy**

TURNABOUT REVERSIBLE JACKET

229587	Adult	XS-3XL	MSRP 79.00
229687	Youth	S-XL	MSRP 78.00
229787	Ladies	XS-2XL	MSRP 79.00

- Micron™ polyester is a lightweight, wind/water-resistant fabric
- Lightweight fleece inner layer
- Ladies' fit on style 229787
- Set-in sleeves
- Front zippered pockets on both sides
- Elastic cuffs
- Open bottom



Detachable hood

Interior all-access decoration zipper



Fully Reversible

OUTERWEAR

ATHLETIC
GREY/
CARBON
48EBLACK/
CARBON
D86DARK GREEN/
CARBON
C84MAROON/
CARBON
E92NAVY/
CARBON
E81OLIVE/
BLACK
85EORANGE/
BLACK
321ROYAL/
CARBON
E86SCARLET/
BLACK
48ESCARLET/
CARBON
E90

REVERSIBLE



IVY LEAGUE COLLECTION



NEW COLORS

IVY LEAGUE HOODIE

229563 Adult XS-3XL MSRP 51.20

- 7.6 ounce 55% polyester/41% cotton/4% rayon, super soft fleece for superior softness
- Exterior faux leather logo loop label
- Jersey lined hood with metal tipped drawcord (sizes S-3XL)
- Set-in sleeves
- Side seam pockets
- Spandex blend rib-knit cuffs and bottom hem



NEW COLORS

IVY LEAGUE PULLOVER

229565 Adult XS-3XL MSRP 51.20

- 7.6 ounce 55% polyester/41% cotton/4% rayon, super soft fleece for superior softness
- Exterior faux leather logo loop label
- Set-in sleeves
- Side seam pockets
- Spandex blend rib-knit inner collar & cuffs and bottom



FLEECE



IVY LEAGUE COLLECTION



FLEECE

NEW COLORS

LADIES IVY LEAGUE FUNNEL NECK PULLOVER

229763 Ladies
XS-2XL MSRP 51.20

- 7.6 ounce 55% polyester/41% cotton/4% rayon, super soft fleece for superior softness
- Exterior faux leather logo loop label
- Funnel neck with metal tipped drawcord (sizes S-2XL)
- Raglan sleeves
- Front pockets
- Striped spandex blend rib-knit cuffs and bottom hem
- Side vents



NEW ATHLETIC GREY HEATHER/ BIRCH 982
BLACK/ WHITE 420
CARBON HEATHER/ WHITE 99E
DARK GREEN HEATHER/ WHITE 86E
DUSTY ROSE HEATHER/ WHITE 87E
MAROON HEATHER/ WHITE 61N



NAVY HEATHER/ WHITE 57N
NEW OLIVE HEATHER/ BIRCH 984
ROYAL HEATHER/ WHITE 58N
SCARLET HEATHER/ WHITE 59N
STORM HEATHER/ WHITE 88E

LADIES IVY LEAGUE FLEECE CREW

223490 Ladies XS-2XL MSRP 42.80

- 7.6 ounce 55% polyester/41% cotton/4% rayon, super soft fleece
- Exterior faux leather logo loop label
- Raglan sleeves
- Rib-knit collar, cuffs and bottom band



ATHLETIC GREY HEATHER/ BIRCH 982
ATHLETIC GREY HEATHER/ WHITE 793
CARBON HEATHER/ BIRCH 815
DUSTY ROSE HEATHER/ BIRCH 986
NAVY HEATHER/ WHITE 57N



OLIVE HEATHER/ BIRCH 984
ROYAL HEATHER/ WHITE 58N
SCARLET HEATHER/ WHITE 59N
STORM HEATHER/ BIRCH 985



FIELD GUIDE
OUTFITTERS

NEW
ALMOND
NUU



NEW
ARCTIC
BLUE
NVB



NEW
BLUSH
PINK
JIY



NEW
GREEN
MOSS
00U



NEW
VINTAGE
WHITE
85S



DRI-POWER® FLEECE HOODIE

695HBM Adult S-3XL MSRP 36.40
4XL in select colors
995HBB Youth S-XL MSRP 29.40

- 9.3 ounce
- Colors: 50% cotton/50% polyester, Oxford: 52% polyester/48% cotton
- Dri-Power® Moisture Wicking Technology
- Double-ply hood with drawcord (on Adult only)
- Set-in sleeves
- Front pouch pocket
- Rib-knit cuffs and bottom band

Available in 4XL



BLACK BLK
BLACK HEATHER GW8
J. NAVY QZ8
OXFORD OXF
ROYAL ROY
TRUE RED TRR

Available in Adult only



ASH 951
BURNT ORANGE BOR
CARDINAL CRD
COLLEGIATE BLUE LEG
DARK GREEN DGR
GOLD GLD
MAROON MAR
PURPLE PUR
WHITE WHI



CHAI
HOUSE



FLEECE

LADIES SLOUCHY CREW

NEW

5424 Ladies XS-2XL MSRP 31.00

- 60% cotton/40% polyester
- Tear away label
- Dropped shoulder sleeves for mobility and comfort
- Waist length
- Rib-knit cuffs and bottom band



BIRCH 907
BLACK 080
CARBON HEATHER E83
CELERY 54T
CHARCOAL HEATHER 017
DUSTY ROSE 23D
NAVY 065
STORM 932



NEW

COOLCORE® SLEEVELESS COMPRESSION TANK

R22CPM Adult XS-3XL MSRP 29.00

- 84% polyester/16% spandex elastane Xtreme compression cloth with Coolcore® technology
- 92% polyester/8% elastane stretch mesh inserts underarm
- Garment protects against the sun with 50+ UPF
- Tagless label
- Dropped tail

Coolcore® is engineered to distribute moisture quickly throughout the garment.

As the moisture spreads it dries faster to keep you cool and comfortable, and has UPF 50 sun protection



BLACK
BLK

GRIDIRON SILVER
GSV

NAVY
NAV

ROYAL
ROY

TRUE RED
TRR

WHITE
WHI




coolcore®

TRAINING



NEW

COOLCORE® COMPRESSION SHORTS

R24CPM Adult XS-3XL MSRP 26.00

- 84% polyester/16% spandex elastane Xtreme compression cloth with Coolcore® technology
- 92% polyester/8% elastane stretch mesh gusset
- Garment protects against the sun with 50+ UPF
- Ultra tight fit
- Tagless label
- Branded soft brushed back exposed elastic waistband provides comfort



BLACK
BLK

GRIDIRON SILVER
GSV

WHITE
WHI



TRAINING



NEW

COOLCORE® COMPRESSION FULL LENGTH TIGHT

R25CPM Adult XS-3XL MSRP 35.00

- 84% polyester/16% spandex elastane Xtreme compression cloth with Coolcore® technology
- 92% polyester/8% elastane stretch mesh insert at back of knee and gusset
- Garment protects against the sun with 50+ UPF
- Ultra tight fit
- Tagless label
- Branded soft brushed back exposed elastic waistband provides comfort



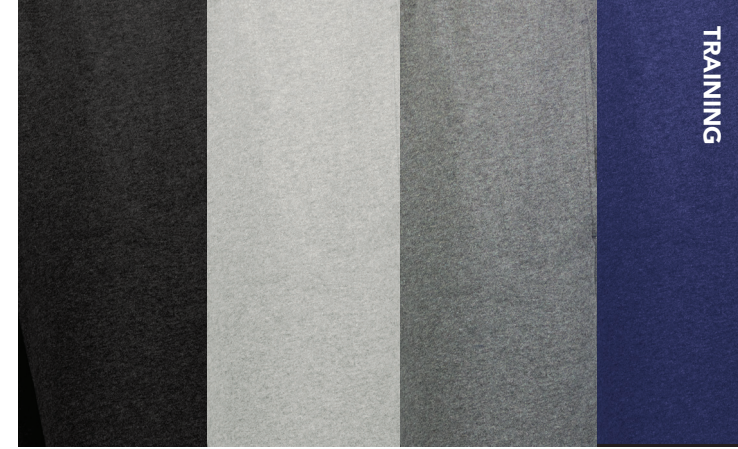
BLACK
BLK

GRIDIRON SILVER
GSV

WHITE
WHI



ATHLETIC FLEECE



TRAINING

NEW

60/40 FLEECE SHORTS

222802 Adult S-3XL MSRP 30.00

- 9 ounce 60% cotton/40% polyester athletic fleece
- Tear away label
- Covered elastic waistband with inside drawcord
- Mock fly
- Side seam pockets
- 8-inch graded inseam



BLACK
080



CARBON HEATHER
E83



CHARCOAL HEATHER
017



NAVY
065



ecoREVIVE™
SUSTAINABLE FABRIC TECHNOLOGY

NEW

VENTURA SOFT KNIT HOODIE

Dry-Excel.

222598	Adult	S-3XL	MSRP 51.00
222698	Youth	S-XL	MSRP 50.00
222798	Ladies	XS-2XL	MSRP 51.00

- 89% recycled polyester/11% spandex
- Ladies' fit on 222798
- Tagless label
- 3-panel crossover hood with drawcord on Adult only
- Side seam pockets on Adult only
- Set-in sleeves with thumbholes for warmth on Ladies
- Self-fabric cuffs and bottom band
- Side vents on Ladies'



BIRCH
907

BLACK
080

CARBON
HEATHER
883

DARK GREEN
035

GREY HEATHER
013

MAROON
745

NAVY
065

OLIVE
039

Available in
Ladies only



ROYAL
060

SCARLET
083

STORM
932



LAVENDER
J63

ORCHID
47V

TERRACOTTA
J46



222598

LIFESTYLE



222599

NEW

VENTURA SOFT KNIT JOGGER

Dry-Excel.

222599	Adult	S-3XL	MSRP 46.00
222699	Youth	S-XL	MSRP 45.00
222799	Ladies	XS-2XL	MSRP 46.00

- 89% recycled polyester/11% spandex
- Ladies' fit on 222799
- Tagless label
- Covered elastic waistband with outside drawcord
- Faux fly on Adult and Youth
- Front pockets with inner valuables pocket inside left pocket
- Back pocket with zipper
- Tapered leg



BLACK
080

CARBON
HEATHER
039

GREY
HEATHER
013

NAVY
065

OLIVE
039

STORM
932



222798



222799

Ventura



223503

223504

Ventura

ecoREVIVE™

SUSTAINABLE FABRIC TECHNOLOGY

NEW

VENTURA SOFT KNIT CREW Dry-Excel.

223503 Adult S-3XL MSRP 44.00

- 89% recycled polyester/11% spandex
- Tagless label
- Crew neck with V stitching at neckline
- Set-in sleeves



BIRCH 907 BLACK 080 CARBON HEATHER E83 GREY HEATHER 013 MAROON 745



NAVY 065 OLIVE 039 ROYAL 060 SCARLET 083 STORM 932



222505



LIFESTYLE

NEW

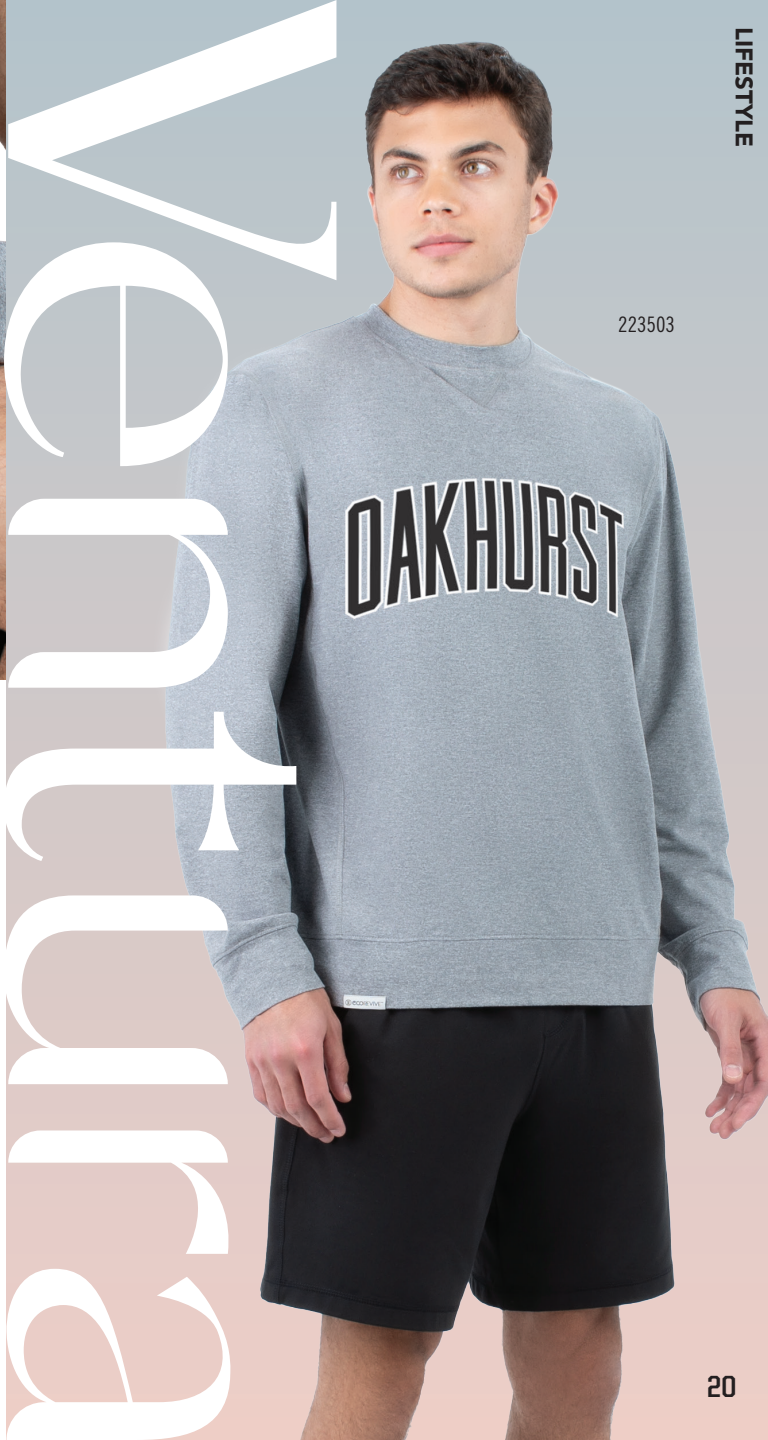
VENTURA SOFT KNIT SHORT SLEEVE HOODIE Dry-Excel.

222505 Adult S-3XL MSRP 45.00
222605 Youth S-XL MSRP 44.00

- 89% recycled polyester/11% spandex
- Tagless label
- 3-panel hood with drawcord on Adult only
- Side seam pockets
- Set-in sleeves



BIRCH 907 BLACK 080 CARBON HEATHER E83 GREY HEATHER 013 NAVY 065 OLIVE 039 SCARLET 083 STORM 932



LIFESTYLE

223503

ecoREVIVE™
SUSTAINABLE FABRIC TECHNOLOGY

NEW

VENTURA SOFT-KNIT SHORTS



223504	Adult	S-3XL	MSRP 35.00
223604	Youth	S-XL	MSRP 34.00

- 89% recycled polyester/11% spandex
- Tagless label
- Covered elastic waistband with outside drawcord (inside drawcord on Youth)
- Front pockets with inner valuables pocket inside left pocket
- Back pocket with zipper
- 8-inch inseam



BLACK
080



CARBON HEATHER
039



GREY HEATHER
013



NAVY
065



OLIVE
039



STORM
932

Ventura



222798

ecoREVIVE™

SUSTAINABLE FABRIC TECHNOLOGY



LIFESTYLE

Dry-Excel™

NEW

LADIES VENTURA SOFT KNIT SHORTS

223704 Ladies XS-2XL MSRP 35.00

- 89% recycled polyester/11% spandex
- Tagless label
- Covered elastic waistband with inside drawcord
- Front pockets
- V-notch at sides
- 5-inch inseam



BLACK
080

CARBON HEATHER
E83

GREY HEATHER
013

LAVENDER
J63

NAVY
065

ORCHID
47V

ROYAL
060

SCARLET
083

TERRACOTTA
J46



Inner valuables pocket
inside left pocket



Back pocket zipper

CUTTER+



Mesh side insert



BASEBALL

COORDINATING LADIES/GIRLS
6919 | 6920



NEW

CUTTER+ FULL BUTTON JERSEY

6909	Adult	S-3XL	MSRP 30.00
6910	Youth	S-XL	MSRP 29.00

- 96% polyester/4% spandex lightweight knit with color secure® technology that helps prevent dye migration
- Micro-Interlock smooth 100% polyester knit side inserts
- Garment protects against the sun with 50+ UPF
- Tear away label
- Buttons spaced for easy embellishment
- Set-in sleeves
- Contoured bottom



BLACK/ WHITE 420	COLUMBIA BLUE/ NAVY 294	DARK GREEN/ WHITE 438	GOLD/ WHITE 245	GRAPHITE/ WHITE R04	MAROON/ WHITE 380	NAVY/ WHITE 301	ORANGE/ WHITE 320	ROYAL/ SCARLET W81	ROYAL/ WHITE 280
SCARLET/ BLACK 406	SCARLET/ NAVY W86	SCARLET/ WHITE 408	VEGAS GOLD/ WHITE 250	WHITE 005	WHITE/ BLACK 226	WHITE/ GRAPHITE 751	WHITE/ NAVY 221	WHITE/ ROYAL 220	WHITE/ SCARLET 235



COORDINATING LADIES/GIRLS
6917 | 6918



NEW CUTTER+ HENLEY JERSEY

6905	Adult	S-3XL	MSRP 25.00
6906	Youth	S-XL	MSRP 24.00

- 96% polyester/4% spandex lightweight knit with color secure® technology that helps prevent dye migration
- Garment protects against the sun with 50+ UPF
- Tear away label
- Raglan sleeves
- Curved bottom hem



ES471
pg. 3

BASEBALL



CUTTER+ 23



COORDINATING LADIES/GIRLS
6915 | 6916



NEW

CUTTER+ V-NECK JERSEY

6907	Adult	S-3XL	MSRP 20.00
6908	Youth	S-XL	MSRP 19.00

- 96% polyester/4% spandex lightweight knit with color secure® technology that helps prevent dye migration
- Garment protects against the sun with 50+ UPF
- Tear away label
- Raglan sleeves



BASEBALL



BLACK/ GOLD 421	BLACK/ SCARLET 500	BLACK/ WHITE 420	COLUMBIA BLUE/ WHITE 293	DARK GREEN/ WHITE 438	GOLD/ WHITE 245	GRAPHITE/ WHITE R04	LIME/ ROYAL 03W	MAROON/ WHITE 380	NAVY/ SCARLET S20	NAVY/ WHITE 301	ORANGE/ BLACK 321	ORANGE/ WHITE 320	PURPLE/ WHITE 450	ROYAL/ SCARLET W81	ROYAL/ WHITE 280	SCARLET/ BLACK 406	SCARLET/ WHITE 408	VEGAS GOLD/ BLACK 252	WHITE/ BLACK 226	WHITE/ NAVY 221	WHITE/ ROYAL 220	WHITE/ SCARLET 235
-----------------------	--------------------------	------------------------	-----------------------------------	--------------------------------	-----------------------	---------------------------	-----------------------	-------------------------	-------------------------	-----------------------	-------------------------	-------------------------	-------------------------	--------------------------	------------------------	--------------------------	--------------------------	--------------------------------	------------------------	-----------------------	------------------------	--------------------------



6849



NEW

GAMER PULL-UP BASEBALL PANTS

6848 Adult S-XL MSRP 11.80
6849 Youth XXS-XL MSRP 10.80

- 12.7 ounce per linear yard, 100% polyester double-knit
- Elastic waistband with inside drawcord
- Faux fly
- Right back welt pocket
- Reinforced double knees
- Retail ticketing matchbook
- Graded inseam
- Elastic cuffs



BLACK
080



BASEBALL



6851



NEW

GAMER PULL-UP BASEBALL PANTS WITH LOOPS

6850 Adult S-XL MSRP 13.80
6851 Youth XXS-XL MSRP 12.80

- 12.7 ounce per linear yard, 100% polyester double-knit
- Elastic waistband with inside drawcord
- Tunnel belt loops
- Faux fly
- Right back welt pocket
- Reinforced double knees
- Retail ticketing matchbook
- Graded inseam
- Elastic cuffs



BLUE GREY
053

WHITE
005



6261

COORDINATING ADULT/YOUTH
6909 | 6910**NEW** LADIES CUTTER+ FULL BUTTON JERSEY

6919	Ladies	XS-2XL	MSRP 30.00
6920	Girls	S-L	MSRP 29.00

- 96% polyester/4% spandex lightweight knit with color secure® technology that helps prevent dye migration
- Garment protects against the sun with 50+ UPF
- Micro-Interlock smooth 100% polyester knit side inserts
- Tear away label
- Buttons spaced for easy embellishment
- Set-in sleeves
- Dropped tail



CUTTER+



CUTTER+



SOFTBALL



COORDINATING ADULT/YOUTH
6905 | 6906

NEW

LADIES CUTTER+ HENLEY JERSEY

6917	Ladies	XS-2XL	MSRP 25.00
6918	Girls	S-L	MSRP 24.00

- 96% polyester/4% spandex lightweight knit with color secure® technology that helps prevent dye migration
- Garment protects against the sun with 50+ UPF
- Tear away label
- Raglan sleeves



6226



SOFTBALL



NEW

LADIES CUTTER+ SLEEVELESS JERSEY

6913	Ladies	XS-2XL	MSRP 22.00
6914	Girls	S-L	MSRP 21.00

- 96% polyester/4% spandex lightweight knit with color secure® technology that helps prevent dye migration
- Garment protects against the sun with 50+ UPF
- Tear away label
- Contoured bottom



BLACK/
WHITE
420

COLUMBIA BLUE/
WHITE
293

DARK GREEN/
WHITE
438

GRAPHITE/
WHITE
R04

NAVY/
WHITE
301

PURPLE/
WHITE
450

ROYAL/
WHITE
280

SCARLET/
WHITE
408

TEAL/
WHITE
331

WHITE
005



UPF 50+
Jersey protects
against harmful UV rays



NEW LADIES CUTTER+ V-NECK JERSEY

6915	Ladies	XS-2XL	MSRP 20.00
6916	Girls	S-L	MSRP 19.00

- 96% polyester/4% spandex lightweight knit with color secure® technology that helps prevent dye migration
- Tear away label
- Raglan sleeves

COORDINATING
ADULT/YOUTH
6907 | 6908



BLACK/ WHITE 420	COLUMBIA BLUE/ WHITE 293	DARK GREEN/ WHITE 438	GOLD/ WHITE 245	GRAPHITE/ WHITE R04	LIME/ ROYAL 03W	MAROON/ WHITE 380	NAVY/ WHITE 301	ORANGE/ WHITE 320	PURPLE/ WHITE 450
------------------------	--------------------------------	-----------------------------	-----------------------	---------------------------	-----------------------	-------------------------	-----------------------	-------------------------	-------------------------



ROYAL/ WHITE 280	SCARLET/ WHITE 408	TEAL/ WHITE 331	VEGAS GOLD/ WHITE 250	WHITE 005	WHITE/ BLACK 226	WHITE/ ROYAL 220	WHITE/ SCARLET 235
------------------------	--------------------------	-----------------------	-----------------------------	--------------	------------------------	------------------------	--------------------------



SOFTBALL

CUTTER+

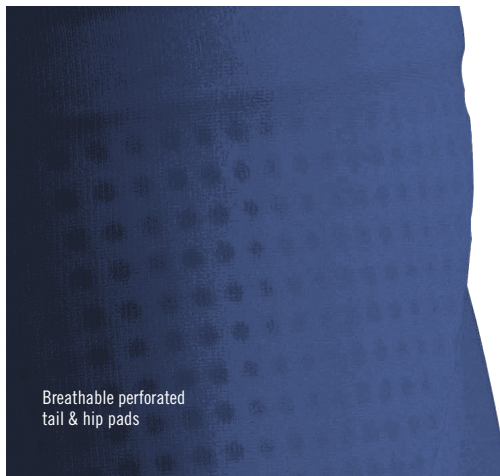


NEW COLOR

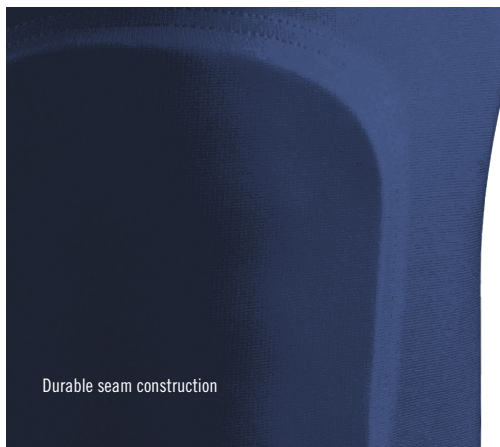
GRIDIRON INTEGRATED FOOTBALL PANT

9600	Adult	S-3XL	MSRP 41.40
9601	Youth	XXS-2XL	MSRP 40.40

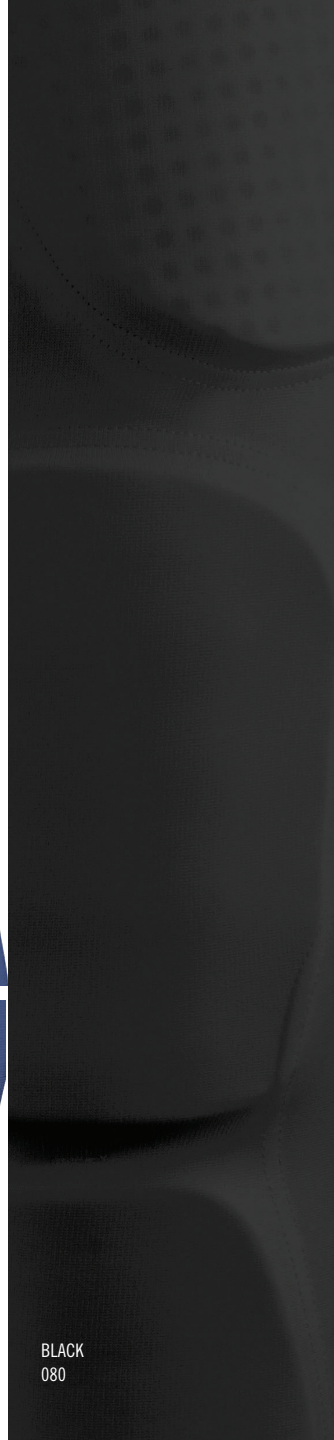
- 100% polyester double knit
- 5 panel construction
- 7 sewn-in EVA pads (hips, tail, thighs and knees)
- Perforated hip and tail pads for extra breathability
- Thigh pads reinforced with plastic core
- Contoured knee pads
- Full length self-fabric belt with D-ring closure
- No fly front
- Entire pant with pads machine washable



Breathable perforated
tail & hip pads



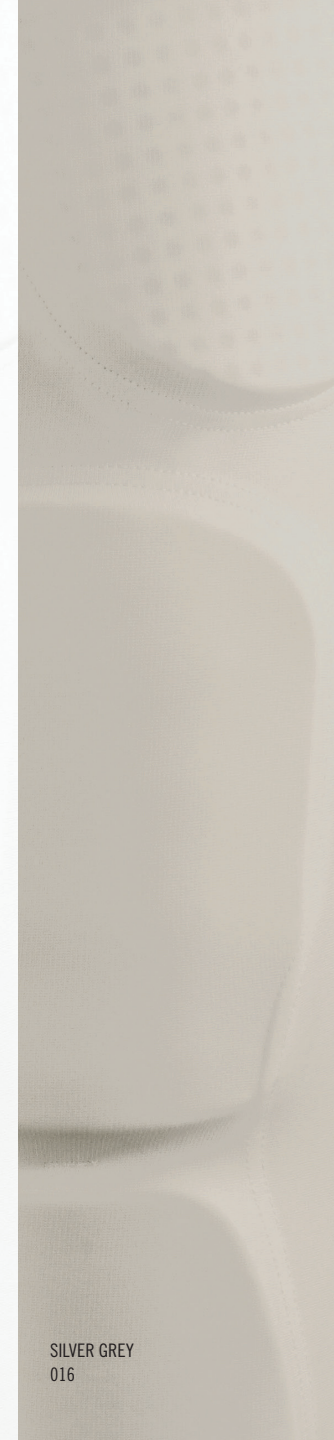
Durable seam construction



BLACK
080



WHITE
005



SILVER GREY
016



NEW NAVY
065



222501



222701



229799



POLOS

**NEW****COOLCORE® PERFORMANCE POLO**

222518	Adult	S-4XL	MSRP 42.80
222701	Ladies	XS-3XL	MSRP 42.80

- 88% polyester/12% elastane Coolcore® with color secure® technology that helps prevent dye migration
- Garment protects against the sun with 50+ UPF
- Ladies' fit on style 222701
- Tagless label
- Three-button placket on Adult
- Self-fabric Johnny collar on Ladies'
- Set-in sleeves
- Side vents
- Contoured bottom with side vents on Ladies'



ATHLETIC GREY/ BLACK 160	BLACK/ WHITE 420	COLUMBIA BLUE/ WHITE 293	DARK GREEN/ WHITE 438	IRON/ WHITE 99D
-----------------------------------	------------------------	-----------------------------------	-----------------------------	-----------------------



KELLY/ WHITE 340	MAROON/ WHITE 380	NAVY/ WHITE 301	ORANGE/ WHITE 320	PURPLE/ WHITE 450
------------------------	-------------------------	-----------------------	-------------------------	-------------------------



ROYAL/ WHITE 280	SCARLET/ WHITE 408	WHITE/ BLACK 226
------------------------	--------------------------	------------------------



222572

ELECTRIFY COOLCORE®
COLLECTION222772
Ladies' fit

Coolcore® is engineered to
distribute moisture quickly
throughout the garment.

As the moisture spreads it
dries faster to keep you cool
and comfortable, and has
UPF 50 sun protection

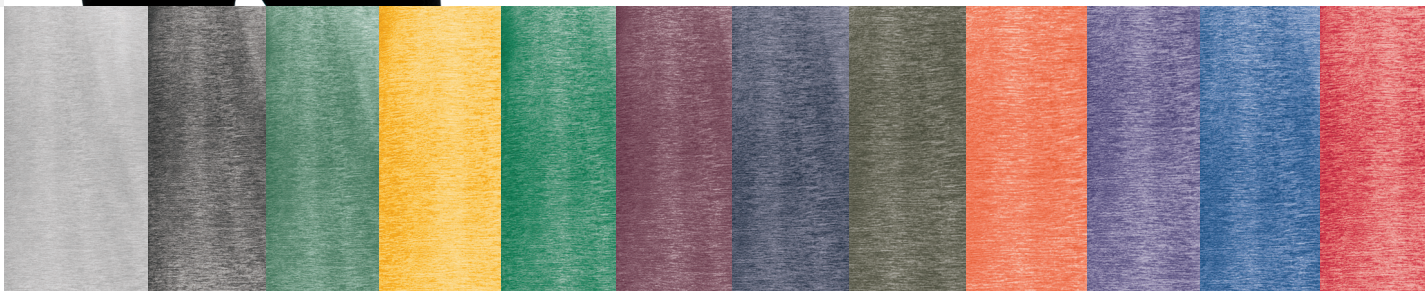


NEW

ELECTRIFY COOLCORE® POLO

222572	Adult	S-4XL	MSRP 42.00
222772	Ladies	XS-3XL	MSRP 42.00

- 87% polyester/13% elastane heathered wicking knit with Coolcore® technology
- Garment protects against the sun with 50+ UPF
- Tagless label
- Three-button placket on Adult
- Five-button placket on Ladies'
- Set-in sleeves
- Side vents
- Contoured bottom on Ladies'

ATHLETIC GREY
HEATHER
55MBLACK
HEATHER
K94DARK GREEN
HEATHER
V97GOLD
HEATHER
E70KELLY
HEATHER
U10MAROON
HEATHER
T09NAVY
HEATHER
U22OLIVE
HEATHER
49NORANGE
HEATHER
V98PURPLE
HEATHER
U86ROYAL
HEATHER
U55SCARLET
HEATHER
T20WHITE
005



LEGEND
COLLECTION



POLOS

COORDINATING
ADULT POLO

R20DKM



NEW

LADIES LEGEND POLO

R20DKX
S-3XL

Ladies
MSRP 38.20

- 4.4 ounce, 100% polyester 2-ply fabric with high mechanical stretch
- Micromesh interior collar stand for breathability around neck
- Dri-Power® Moisture Wicking Technology
- Heat sealed label
- Three-button placket with collar stay that helps maintain collar shape wash after wash
- Set-in sleeves
- Side vents



BLACK
BLK

BURNT
ORANGE
BOR

COLUMBIA
BLUE
CBU

DK GREEN
DGR

KELLY
KEL

MAROON
MAR

NAVY
NAV

PURPLE
PUR

ROYAL
ROY

STEALTH
SHL

TRUE RED
TRR

WHITE
WHI





BLACK
080

GRAPHITE/
BLACK
172

NAVY/
BLACK
308

NEW

UNITED BACKPACK



327930 11.5"W x 19"H x 9.5"D MSRP 61.00

- 600-denier polyester with PVC coating
- 210-denier nylon with PVC coating
- Large main interior compartment with two corded zipper pulls
- Large front ventilated compartment with two corded zipper pulls
- Zippered pocket with brushed interior for valuables
- Front pocket with corded zipper pull with hidden inside mesh ball holder that fits volleyball, soccer ball, or basketball
- Two mesh side pockets
- Adjustable buckles on sides to secure baseball bat
- Internal zippered mesh valuables pocket
- Key clip inside main compartment
- Padded back for support and comfort
- Web handle at top of backpack
- Adjustable padded shoulder straps



NEW

CORE MULTI-SPORT SOCKS

6922

Large (10-13)
Medium (9-11)
Small (7-9)
X-Small (5-7)
MSRP 4.40

- 95% polyester/15% rubber
- Knee-length tube sock



BLACK
080



NEW

FREESTYLE SUBLIMATED SLEEVELESS JERSEY

228182 Adult S-4XL MSRP 59.50
228282 Youth S-XL MSRP 58.50

- Dry-Excel™ 100% polyester double-knit wicking mesh
- Garment protects against the sun with 50+ UPF
- Tagless label
- Outside locker label
- Fishtail bottom



SUBLIMATION

Bolt



FreeStyle SUBLIMATION



NEW

FREESTYLE SUBLIMATED PANT

228173	Adult	S-3XL	MSRP 81.00
228273	Youth	XS-XL	MSRP 80.00

- 12 ounce per linear yard, 100% polyester stretch double knit
- Silicone knitted elastic waistband with tunnel belt loops
- Two-snap closure
- Zipper fly
- Two set-in double welt back pockets with button closure
- Reinforced knees
- Open bottom

Classic Single
228173



Classic Single
228172



NEW

FREESTYLE SUBLIMATED KNICKER

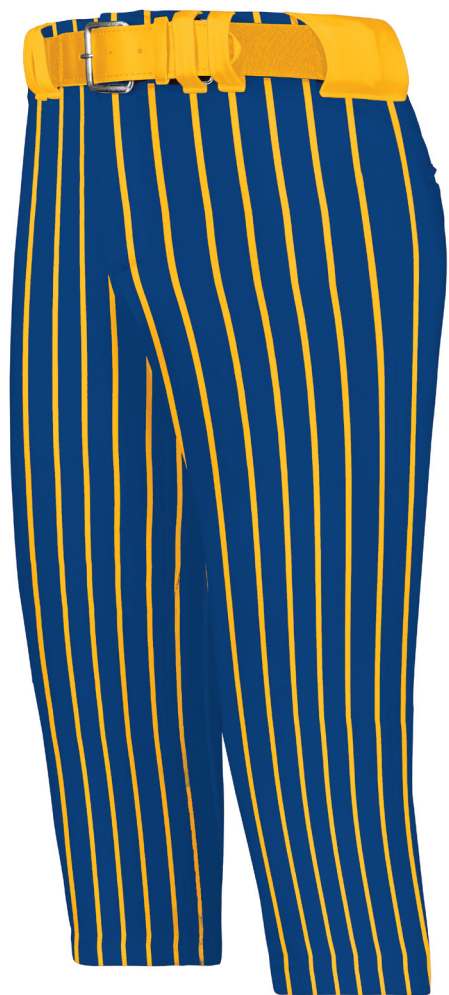
228172	Adult	S-3XL	MSRP 77.00
228272	Youth	S-XL	MSRP 76.00

- 12 ounce per linear yard, 100% polyester stretch double knit
- Silicone knitted elastic waistband with tunnel belt loops
- Two-snap closure
- Zipper fly
- Two set-in double welt back pockets with button closure
- Reinforced knees
- Elastic cuffs



Freestyle

SUBLIMATION



Pinstripe



Cycle

NEW

LADIES FREESTYLE SUBLIMATED SOFTBALL KNICKER

228372	Ladies	XS-3XL	MSRP 77.00
228472	Girls	S-XL	MSRP 76.00

- 12 ounce per linear yard, 100% polyester stretch double knit
- Silicone knitted elastic waistband with tunnel belt loops
- Two-snap closure
- Zipper fly
- Two set-in double welt back pockets with button closure
- Reinforced knees
- Elastic cuffs



Windmill



Freestyle

SUBLIMATION

