

CCM

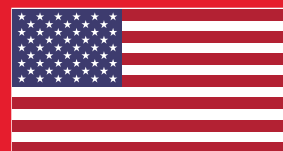


**FreeStyle**  
SUBLIMATION



CCM

20  
23



# GAMEWEAR PROGRAM

Program available to approved CCM Hockey dealers only.  
Contact your local CCM Sales Rep for more details.

A background image of a hockey player in red gear, including a helmet and gloves, with the CCM logo visible on the jersey.

**CCM**

**ALL  
OUT.®**



# AUGUSTA SPORTSWEAR BRANDS



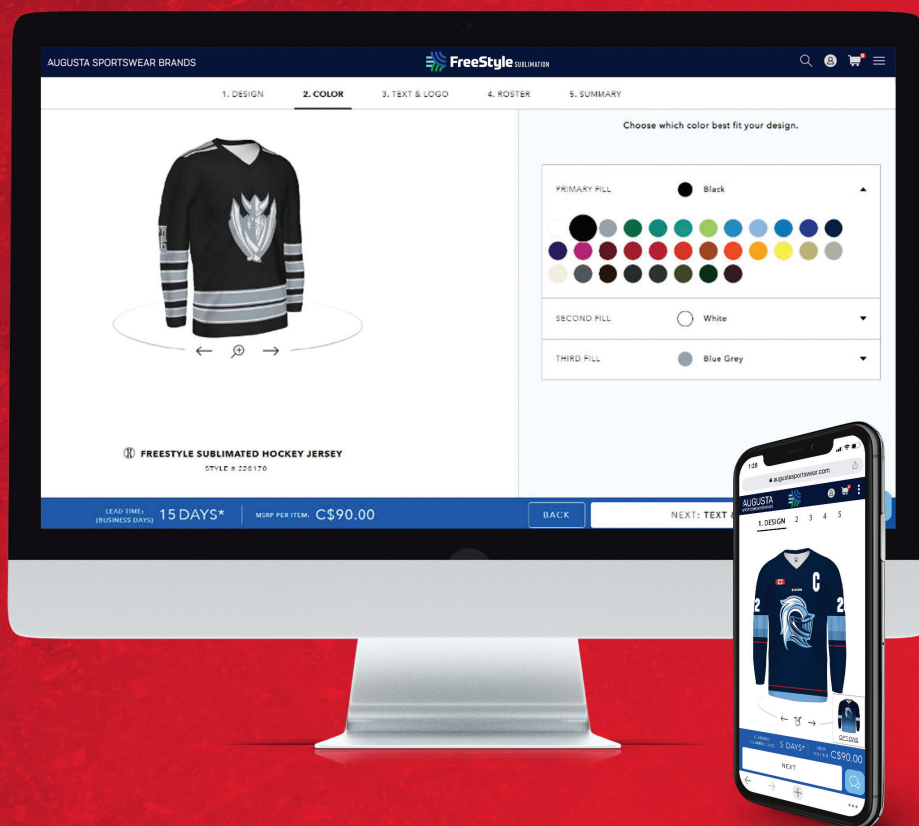
## PROUD OFFICIAL PARTNERS

For over 100 years, CCM has equipped the best hockey players in the world. With the help of constant research and product testing from legendary players, CCM has built products from the inside out and has focused on developing high-quality, intuitive hockey equipment that becomes an extension of the athletes themselves.

Augusta Sportswear Brands is proud to be the Exclusive Amateur Hockey Sublimated Game Wear Licensee for CCM in North America, offering a select line of hockey uniforms with our industry-leading sublimation design platform, FreeStyle Sublimation.

# OWN THE RINK

WITH  **FreeStyle**  
SUBLIMATION



**FreeStyle**

**EXPRESS ART**

NOW AVAILABLE

Visit [www.augustasportswear.com/sublimation](http://www.augustasportswear.com/sublimation) for more info.



# CREATE CUSTOM JERSEYS AND SOCKS USING FREESTYLE'S STATE-OF-THE-ART BUILDER

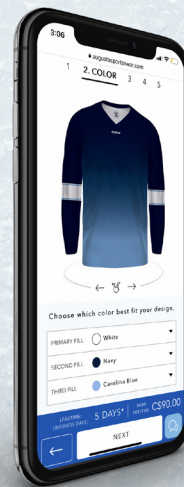
FREEDOM TO CREATE *YOUR STYLE* IN 4 EASY STEPS

STEP 1



Visit the FreeStyle builder to begin creating your custom design.

STEP 2



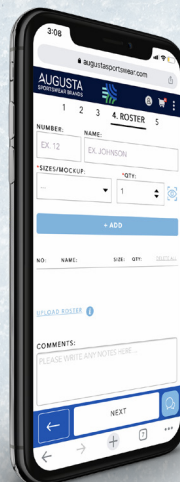
Select the colors that will make your team stand out on the ice.

STEP 3



Apply decoration and logos to your design.

STEP 4



Finish by adding your roster of players and submit your design.



BACK



SOCKS

AVAILABLE MARCH 2023

**\*FREESTYLE ESSENTIAL 2.0  
ROUNDED YOKE GAME JERSEY**

228179	Adult	S-3XL	MSRP 87.00
228279	Youth	S-XL	MSRP 86.00

- Dry-Excel™ 100% polyester single-ply smooth wicking knit
- V-neck
- Set-in sleeves

**\*FREESTYLE ESSENTIAL 2.0  
ROUND YOKE GOALIE JERSEY**

228196	Adult	M, 2XL	MSRP 95.00
228296	Youth	XL	MSRP 94.00

\* Styles feature rounded shoulders

AVAILABLE MARCH 2023

**FREESTYLE ESSENTIAL 2.0 SOCKS**

228152	Adult	S/M, L/XL, 2XL	MSRP 36.00
228252	Youth	S/M, L/XL	MSRP 35.00

- Dry-Excel™ 100% polyester single-ply smooth wicking knit
- Encased elastic at top and bottom
- Hook-and-loop fastener at top



BACK



SOCKS

AVAILABLE MARCH 2023

**FREESTYLE ESSENTIAL 2.0  
STRAIGHT YOKE GAME JERSEY**

228162	Adult	S-3XL	MSRP 87.00
228262	Youth	S-XL	MSRP 86.00

- Dry-Excel™ 100% polyester single-ply smooth wicking knit
- V-neck
- Set-in sleeves

**FREESTYLE ESSENTIAL 2.0  
STRAIGHT YOKE GOALIE JERSEY**

228169	Adult	M, 2XL	MSRP 95.00
228269	Youth	XL	MSRP 94.00

AVAILABLE MARCH 2023

**FREESTYLE ESSENTIAL 2.0 SOCKS**

228152	Adult	S/M, L/XL, 2XL	MSRP 36.00
228252	Youth	S/M, L/XL	MSRP 35.00

- Dry-Excel™ 100% polyester single-ply smooth wicking knit
- Encased elastic at top and bottom
- Hook-and-loop fastener at top





Log in for more information at  
[augustasportswear.com/sublimation](http://augustasportswear.com/sublimation)

# ESSENTIAL SERIES

FREESTYLE SUBLIMATION | ESSENTIAL SERIES



BACK



SOCKS

AVAILABLE MARCH 2023

## FREESTYLE SINGLE-PLY REVERSIBLE HOCKEY JERSEY

228150 Adult S-3XL MSRP 130.00  
 228250 Youth S-XL MSRP 129.00

- Dry-Excel™ 100% polyester single-ply smooth wicking knit
- V-neck
- Set-in sleeves

AVAILABLE MARCH 2023

## FREESTYLE SINGLE-PLY REVERSIBLE GOALIE JERSEY

228151 Adult M, 2XL MSRP 138.00  
 228251 Youth XL MSRP 137.00

- Dry-Excel™ 100% polyester single-ply smooth wicking knit
- V-neck
- Set-in sleeves

AVAILABLE MARCH 2023

## FREESTYLE ESSENTIAL 2.0 SOCKS

228152 Adult S/M, L/XL, 2XL MSRP 36.00  
 228252 Youth S/M, L/XL MSRP 35.00

- Dry-Excel™ 100% polyester single-ply smooth wicking knit
- Encased elastic at top and bottom
- Hook-and-loop fastener at top

Upload your own artwork, create custom designs, and choose jersey colors online at [augustasportswear.com](http://augustasportswear.com)!

CCM



BACK



SOCKS

**FREESTYLE PERFORMANCE V-NECK JERSEY**

228103 Adult S-3XL MSRP 120.00

228203 Youth S-XL MSRP 119.00

**GOALIE CUT**

228104 Intermediate/Senior M/2XL MSRP 128.00

228204 Junior XL MSRP 127.00

- Dry-Excel™ 100% polyester wicking knit with 100% polyester mesh back for breathability
- Traditional lace-up neckline
- Double elbow and shoulder construction
- Set-in sleeves

**FREESTYLE PERFORMANCE SOCKS**

228154 Adult S/M, L/XL, 2XL MSRP 56.00

228254 Youth S/M, L/XL MSRP 52.00

- Dry-Excel™ 100% polyester wicking knit
- Encased elastic at top and bottom
- Hook-and-loop fastener at top
- Double Knee



BACK



SOCKS

**FREESTYLE PERFORMANCE TRADITIONAL JERSEY**

228105 Adult S-3XL MSRP 110.00

228205 Youth S-XL MSRP 109.00

**GOALIE CUT**

228106 Intermediate/Senior M/2XL MSRP 118.00

228206 Junior XL MSRP 117.00

- Dry-Excel™ 100% polyester wicking knit with 100% polyester mesh back for breathability
- V-neck
- Double elbow and shoulder construction
- Set-in sleeves

**FREESTYLE PERFORMANCE SOCKS**

228154 Adult S/M, L/XL, 2XL MSRP 56.00

228254 Youth S/M, L/XL MSRP 52.00

- Dry-Excel™ 100% polyester wicking knit
- Encased elastic at top and bottom
- Hook-and-loop fastener at top
- Double Knee





Log in for more information at  
[augustasportswear.com/sublimation](http://augustasportswear.com/sublimation)

# PERFORMANCE SERIES



BACK



SOCKS

## FREESTYLE PERFORMANCE MODIFIED JERSEY

228164	Adult	S-3XL	MSRP 110.00
228264	Youth	S-XL	MSRP 109.00

### GOALIE CUT

228115	Intermediate/Senior	M/2XL	MSRP 118.00
228215	Junior	XL	MSRP 117.00

- Dry-Excel™ 100% polyester wicking knit with 100% polyester mesh back for breathability
- Modified V-neck
- Double elbow and shoulder construction
- Set-in sleeves

## FREESTYLE PERFORMANCE SOCKS

228154	Adult	S/M, L/XL, 2XL	MSRP 56.00
228254	Youth	S/M, L/XL	MSRP 52.00

- Dry-Excel™ 100% polyester wicking knit
- Encased elastic at top and bottom
- Hook-and-loop fastener at top
- Double Knee



BACK



SOCKS

## FREESTYLE PERFORMANCE MITER JERSEY

228108	Adult	S-3XL	MSRP 120.00
228208	Youth	S-XL	MSRP 119.00

### GOALIE CUT

228165	Intermediate/Senior	M/2XL	MSRP 128.00
228265	Junior	XL	MSRP 126.00

- Dry-Excel™ 100% polyester wicking knit with 100% polyester mesh back for breathability
- Miter collar
- Double elbow and shoulder construction
- Set-in sleeves

## FREESTYLE PERFORMANCE SOCKS

228154	Adult	S/M, L/XL, 2XL	MSRP 56.00
228254	Youth	S/M, L/XL	MSRP 52.00

- Dry-Excel™ 100% polyester wicking knit
- Encased elastic at top and bottom
- Hook-and-loop fastener at top
- Double Knee

# NHL INSPIRED BUILDER DESIGN LINES

**ANAHEIM**

**TEAM**

**WHITE**



**ARIZONA**

**TEAM**

**WHITE**



**BOSTON**

**TEAM**

**WHITE**



**\*BUFFALO**

**TEAM**

**WHITE**



**CALGARY**

**TEAM**

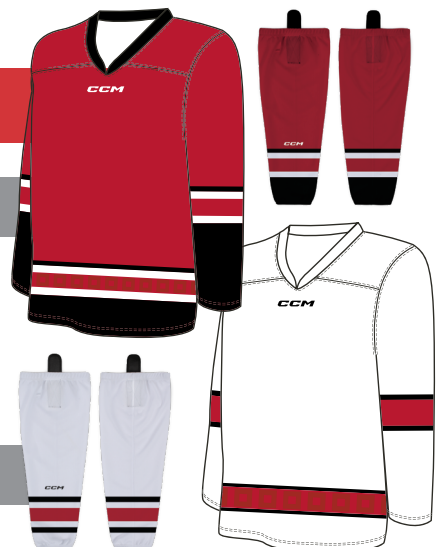
**WHITE**



**CAROLINA**

**TEAM**

**WHITE**



**\*ROUNDED YOKE**



## CHICAGO

TEAM

WHITE



## COLORADO

TEAM

WHITE



## COLUMBUS

TEAM

WHITE



## DALLAS

TEAM

WHITE



## DETROIT

TEAM

WHITE



## EDMONTON

TEAM

WHITE



## FLORIDA

TEAM

WHITE



## LOS ANGELES

TEAM

WHITE



## MINNESOTA

TEAM

WHITE



## MONTREAL

TEAM

WHITE



## NASHVILLE

TEAM

WHITE



## NEW JERSEY

TEAM

WHITE





## NEW YORK

TEAM

WHITE



## NEW YORK

TEAM

WHITE



## OTTAWA

TEAM

WHITE



## PHILADELPHIA

TEAM

WHITE



## \*PITTSBURGH

TEAM

WHITE



## SAN JOSE

TEAM

WHITE



\*ROUNDED YOKE

## SEATTLE

TEAM

WHITE



## ST. LOUIS

TEAM

WHITE



## TAMPA BAY

TEAM

WHITE



## TORONTO

TEAM

WHITE



## VANCOUVER

TEAM

WHITE



## VEGAS

TEAM

WHITE





\*WASHINGTON

TEAM

WHITE

\*ROUNDED YOKE



WINNIPEG

TEAM

WHITE



### NHL INSPIRED DESIGN LINE NOTES:

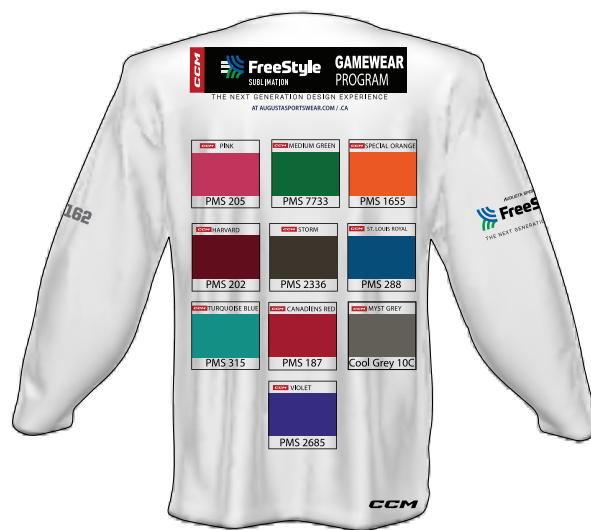
- Teams marked with \* indicate a rounded shoulder yoke design
- Standard minimum order quantities apply (Essential 12 pcs & Performance 20 pcs)
- No additional custom design line fees for NHL Inspired design lines

### NHL INSPIRED DESIGN LINE ORDERING INFORMATION:

- To order NHL inspired design lines, select the proper silhouette on the builder for the NHL style required (round shoulder yoke or straight shoulder yoke)
- Select "Full Custom" option from design line options
- In comment box in "Step 4" type NHL city name, team, or white version and list what colors need to be changed.



# CCM STANDARD JERSEY COLORS



SAMPLE STYLE NUMBER: 22S162

GARMENT BASE IS WHITE

## CCM COLOR CHART

<b>CCM KELLY</b> 356 C	<b>CCM MEDIUM GREEN</b> 7733 C	<b>CCM BRIGHT GREEN</b> 375 C	<b>CCM DARK GREEN/ASB FOREST</b> 3435 C	<b>CCM TURQUOISE/ASB TURQUOISE</b> 315 C	<b>CCM NAVY/ASB NAVY</b> 289 C	<b>CCM ROYAL</b> 281 C	<b>CCM ST. LOUIS ROYAL/ASB ROYAL</b> 288 C	<b>CCM CAPITAL BLUE</b> 7692 C	<b>CCM ICE BLUE</b> 324 C
<b>CCM SKY BLUE</b> 2389 C	<b>CCM VIOLET</b> 2685 C	<b>CCM PINK</b> 205 C	<b>CCM ORANGE</b> 165 C	<b>CCM SPECIAL ORANGE</b> 1655 C	<b>CCM ORANGE (GLOVES)</b> 3516 C	<b>CCM HARVARD/ASB CARDINAL</b> 202 C	<b>CCM RED/ASB CLASSIC RED</b> 186 C	<b>CCM CANADIAN RED/ASB SCARLET</b> 187 C	<b>CCM MAROON</b> 490 C
<b>CCM BEIGE</b> 468 C	<b>CCM ANTIQUE GOLD</b> 4515 C	<b>CCM PURE GOLD</b> 1255 C	<b>CCM SUNFLOWER</b> 137 C	<b>CCM YELLOW</b> 109 C	<b>CCM SILVER GREY/ASB SILVER GREY</b> COOL GRAY C7	<b>CCM BROWN</b> 440 C	<b>CCM STORM</b> 2336 C	<b>CCM MYSTIC GREY</b> COOL GREY 10 C	<b>CCM STORM GREY</b> 431 C

\*COLORS WILL BE LIVE ON THE FREESTYLE BUILDER 3/1/2023

\* Prior to 3/1/2023, to request a specific CCM color you for your order please reference the CCM color name and coordinating pms color code in step 4 of the freestyle builder comment box. A custom pantone match charge will apply, plus an additional 5 business days production time frame.



## DECORATION OPTIONS

### EMBROIDERY & TWILL

Available on Performance Series garments only.



JERSEY FRONT



SHOULDER PATCH



UPPER BACK

TWILL & EMBROIDERY DECORATION LOCATION	MSRP
FRONT LOGO (Twill/Patch Embroidery)	\$24.00
2 SHOULDER LOGOS (Same Logos)	\$16.00
2 SHOULDER LOGOS (Different Logos)	\$20.00
SMALL TEAM LOGO (4" X 4")	\$12.00
STOP SIGN OR FLAGS (3" X 3")	\$8.00

- Dealer discounts apply to sublimated jerseys only (does not include decoration)
- Player name and number personalization is only available in sublimation in both the Performance & Essential Series
- MOQ 20 units per design – below minimum dealer charge of \$30 MSRP per jersey (6 to 19 units)

JERSEY OPTIONS	MSRP
TIE DOWN STRAP	\$12.00
BLANK SELF-FABRIC NAMEPLATE (Bagged separately)	\$10.00
SUBLIMATED NAMEPLATE (Stitched on jersey)	\$13.00
CUSTOM PMS COLOR MATCH	\$100.00/color

\*Pricing is effective 3/1/2023. All pricing is subject to change without notice.

# ESSENTIAL SERIES SIZING

## HOCKEY JERSEYS

Garment Measurements - In.	YOUTH				ADULT						GOALIE		
Size	S	M	L	XL	S	M	L	XL	2XL	3XL	YXL	AM	AXL
Chest Width	37.75	40.5	42.5	44.5	45	49	53	57	61	63	44	57	63
Body Length	24.75	26.5	28	29.5	30	31	32	33	33	34	28	30	32
Sleeve Length	24.5	26.5	29.5	30	31.5	33.5	34.5	35.5	36	36.5	29	33.5	35

Garment Measurements - Cm.	YOUTH				ADULT						GOALIE		
Size	S	M	L	XL	S	M	L	XL	2XL	3XL	YXL	AM	AXL
Chest Width	95.89	102.87	107.95	113.03	114	124	135	145	155	160	112	145	160
Body Length	62.87	67.31	71.12	74.93	76	79	81	84	84	86	71	76	81
Sleeve Length	61.60	67.31	74.93	76.20	80	85	88	90	91	93	74	85	89

## HOCKEY SOCKS

Garment Measurements - In.	YOUTH		ADULT			Garment Measurements - Cm.	YOUTH		ADULT		
Size	S/M	L/XL	S/M	L/XL	2XL	Size	S/M	L/XL	S/M	L/XL	2XL
Length	20	22.5	25.5	28	30	Length	51	57	65	71	76

# PERFORMANCE SERIES SIZING

## HOCKEY JERSEYS

Garment Measurements - In.	YOUTH				ADULT						GOALIE		
Size	S	M	L	XL	S	M	L	XL	2XL	3XL	YXL	AM	AXL
Chest Width	37.75	40.5	42.5	44.5	45	49	53	57	61	63	50	57.25	63.75
Body Length (Front)	24.75	26.5	28	29.5	30	31	32	33	33	34	29	32	34
Body Length (Back)	26.25	28	29.5	31	30	31	32	33	33	34	30.5	33.5	35.5
Sleeve Length	24.5	26.5	29.5	30	31.5	33.5	34.5	35.5	36	36.5	29	33.5	35

Garment Measurements - Cm.	YOUTH				ADULT						GOALIE		
Size	S	M	L	XL	S	M	L	XL	2XL	3XL	YXL	AM	AXL
Chest Width	95.89	102.87	107.95	113.03	127.00	132.08	137.16	145.42	153.67	161.93	127.00	145.42	161.93
Body Length (Front)	62.87	67.31	71.12	74.93	77.47	80.01	82.55	85.09	87.63	90.17	73.66	81.28	86.36
Body Length (Back)	66.68	71.12	74.93	78.74	81.28	83.82	86.36	88.90	91.44	93.98	77.47	85.09	90.17
Sleeve Length	61.60	67.31	74.93	76.20	85.09	87.00	88.90	92.71	94.52	96.33	73.66	85.09	88.90

## HOCKEY SOCKS

Garment Measurements - In.	YOUTH		ADULT			Garment Measurements - Cm.	YOUTH		ADULT		
Size	S/M	L/XL	S/M	L/XL	2XL	Size	S/M	L/XL	S/M	L/XL	2XL
Length	20	22.5	25.5	28	30	Length	50.8	57.15	64.77	71.12	76.2

**Athletic Block**

ABCDEFGHIJKLMNOPQRSTUVWXYZ

0123456789

**Briquet**AaBbCcDdEeFfGgHhIiJjKkLlMm  
NnOoPpQqRrSsTtUuVvWwXxYyZz

0123456789

**Brush Script**AaBbCcDdEeFfGgHhIiJjKkLlMm  
NnOoPpQqRrSsTtUuVvWwXxYyZz

0123456789

**Chisel**

ABCDEFGHIJKLMNOPQRSTUVWXYZ

0123456789

**Compact**

ABCDEFGHIJKLMNOPQRSTUVWXYZ

0123456789

**Conviction**AaBbCcDdEeFfGgHhIiJjKkLlMmNn  
OoPpQqRrSsTtUuVvWwXxYyZz

0123456789

**Gridiron**

ABCDEFGHIJKLMNOPQRSTUVWXYZ

0123456789

**Hardball**

ABCDEFGHIJKLMNOPQRSTUVWXYZ

0123456789

**Impact**

ABCDEFGHIJKLMNOPQRSTUVWXYZ

0123456789

**Jet**

ABCDEFGHIJKLMNOPQRSTUVWXYZ

0123456789

**Machine**

ABCDEFGHIJKLMNOPQRSTUVWXYZ

0123456789

**Monolith**

ABCDEFGHIJKLMNOPQRSTUVWXYZ

0123456789

**Plain Block**AaBbCcDdEeFfGgHhIiJjKkLlMmNn  
OoPpQqRrSsTtUuVvWwXxYyZz

0123456789

**City Block**AaBbCcDdEeFfGgHhIiJjKkLlMmNn  
OoPpQqRrSsTtUuVvWwXxYyZz

0123456789

**Rock**AaBbCcDdEeFfGgHhIiJjKkLlMmNn  
OoPpQqRrSsTtUuVvWwXxYyZz

0123456789

**Shogun**

ABCDEFGHIJKLMNOPQRSTUVWXYZ

0123456789

**Slab Block**AaBbCcDdEeFfGgHhIiJjKkLlMmNn  
OoPpQqRrSsTtUuVvWwXxYyZz

0123456789

**Slant**ABCDEFGHIJKLMNOPQRSTUVWXYZ  
0123456789

0123456789

**RA Plain Block**ABCDEFGHIJKLMNOPQRSTUVWXYZ  
NOPQRSTUVWXYZ**Techno Tall**

ABCDEFGHIJKLMNOPQRSTUVWXYZ

0123456789

**Fancy**

ABCDEFGHIJKLMNOPQRSTUVWXYZ

0123456789

**Monster**ABCDEFGHIJKLMNOPQRSTUVWXYZ  
NOPQRSTUVWXYZ

0123456789

**Speed**ABCDEFGHIJKLMNOPQRSTUVWXYZ  
NOPQRSTUVWXYZ**Athletic Script**AaBbCcDdEeFfGgHhIiJjKkLlMmNn  
OoPpQqRrSsTtUuVvWwXxYyZz

0123456789

**Home Run**AaBbCcDdEeFfGgHhIiJjKkLlMmNn  
OoPpQqRrSsTtUuVvWwXxYyZz

0123456789

**Pro Block**

ABCDEFGHIJKLMNOPQRSTUVWXYZ

0123456789

**Times**AaBbCcDdEeFfGgHhIiJjKkLlMm  
NnOoPpQqRrSsTtUuVvWwXxYyZz

0123456789

**RA Full Block**ABCDEFGHIJKLMNOPQRSTUVWXYZ  
NOPQRSTUVWXYZ

0123456789



## ARTWORK

**How to submit:** For quickest and most economical order process, please submit artwork in vector format. We accept either .eps, .pdf, .svg, or .ai files. All other file types can be redrawn but will not be exact match and will extend lead-time.

**Art approval:** Art approval is your sign off on the artwork and roster telling us to proceed with an order you have already placed. We do everything possible to ensure order accuracy, but ultimately need your final sign off to produce the garment accurately. It is critical to give the art approval process a thorough review. Lead times do not start until you have provided approval on the artwork, roster, and all relevant order information.

**Roster approval:** It is important to preview each image during roster entry to ensure that the selections render correctly. This step allows the opportunity to go back and make changes to the design prior to order submission. The customer is responsible for proofing and approving all names and numbers. This includes ensuring font is in desired upper or lower case format. Utilize our online roster form for ease of submission. Please follow roster instructions to ensure correct information is applied to your order.

**Mock ups:** Mock-ups are requests for artwork without supplying an order. They help pre-approve artwork and speed up the process so that you do not have to wait for an approval once you get your roster. Mock-ups must be ordered on the builder by selecting "mockup" from the roster size in step four of the design process.

Augusta Sportswear Brands offers free custom mock-ups and logo redraws. In the rare instance that art requires over 3 hours to complete and is not accompanied with an order, you will be charged an additional charge for the time. We will request your approval to move forward before proceeding with the charges. In these instances when you pay for a mock up and come back to place your order we will not charge the custom art fee associated with that order. If you place an order from a mock-up you will still receive the final art with your roster to approve.

**Custom fonts:** Augusta Sportswear brands will accept custom font orders if the live format of the custom font is provided. The order will be considered full custom and longer lead times apply. See details above. Additionally, a per unit upcharge of \$6 MSRP will be applied for up to 50 units. Augusta Sportswear pattern fills can be added to both standard and custom fonts. If the garment design uses a standard font and pattern fills are applied, the order will be considered full custom with longer lead times and the \$6 MSRP per unit upcharge. If the garment design uses a custom font and pattern fills are applied, garments will only be up charged \$6 MSRP per unit once. Custom fonts or adding a pattern fills to fonts require additional time for large orders. Please add 5 additional days of lead time.



SKIP PROOFS & GO STRAIGHT TO PRODUCTION  
WITH EXPRESS ART!

## WHAT'S FreeStyle EXPRESS ART

**Express Art** is your artwork converted to builder-ready assets by the ASB Art Team. Stored in your Art Library, Express Art is pre-approved and bypasses the proofing process and goes straight to production.

## SAMPLE POLICY

Type	Purpose	Lead Time	Restocking Time	Where to Find
Decorated samples	Show quality and style	Same day	No	Check website or email <a href="mailto:sales@augustasportswear.com">sales@augustasportswear.com</a>
Fit samples	Fit player for size	Same day	No	Email <a href="mailto:sales@augustasportswear.com">sales@augustasportswear.com</a>

Stock decoration and fit samples will be available for the following Essentials styles: **22S136, 22S236, 22S155, 22S255, 22S168, 22S268.**

Stock decoration will be available for the following Performance styles: **22S108.** Performance size run samples will be available in styles **22S105, 22S205, 22S206, 22S154, 22S254.**

Please contact your sales rep at [sales@augustasportswear.com](mailto:sales@augustasportswear.com) or visit [augustasportswear.com](http://augustasportswear.com) for more ordering info and one-off sam-



## COLOR

Augusta Sportswear offers a robust color pallet to cover any need. These colors are calibrated regularly on all equipment. Despite all efforts to perfectly match the color standard, it is impossible to guarantee an exact match from order to order.

Online designs feature RGB values which can vary from one monitor to another. In production, the RGB values are converted to CMYK values for printing. Augusta Sportswear Brands will not be responsible for color variations between online previews and production garments.

**PMS Color Matching:** We offer PMS color matching as a service. We are unable to guarantee an exact color match, but will utilize a detailed process to ensure the closest match possible. We charge \$100.00 MSRP per color to be matched. This charge is in addition to the \$6.00 MSRP art charge that is required to update all the art files with your custom color. These orders will require additional lead time to match the color. Please add 5 days to your lead time. Orders that require a match to a physical garment or have an excessive amount of colors may require additional days. Rush service is not available on these orders. Reorders requiring a PMS color match will not receive a charge, but will require the additional lead time stated above.

## CARE OF SUBLIMATION GARMENTS

Sublimated designs will not crack, peel, or fade over time and will last the life span of the fabric. Designs do not wash out. Similar to piece dyed fabric pilling can occur. When pilling occurs the white body fabric can become visible. Below is a list of Sublimation “Do’s and Don’ts”. Following these care instructions will be crucial to the long life of your sublimated garment.

YES	NO
Machine wash cold water, gentle cycle with similar colors.	Do not use bleach
Dampen any stains with water and a small amount of mild soap or detergent.	Do not use fabric softeners
Tumble dry on low works fine, but hang to dry is best.	Do not iron
Turn garment inside out before washing (this is not required, but may extend the life of the garment)	Do not dry clean, store damp, or wash or dry with items containing Velcro zipper, or other rough surfaces
—	Do not rub fabric against abrasive surfaces like a fence or Velcro from a bag

Augusta Sportswear Brands will not be responsible for uniforms that are damaged due to improper care or maintenance. Failure to follow our specified care instructions will void all guarantees.

**Under no circumstances** are sublimated garments to be put through a screen-print dryer or heat press. Dyes will migrate and the design will be ruined.

## GENERAL ORDER INFORMATION

**Order changes and cancellations:** After art approval orders cannot be cancelled or changed. If you have not approved artwork or need to make a change, contact our Customer Care team by going online and clicking Live Chat, or please email Augusta Sportswear Brands at [sales@augustasportswear.com](mailto:sales@augustasportswear.com).

**Returns:** Augusta Sportswear Brands sublimated product is not available for returns. Defective garments will be reviewed on a case by case bases.

**Shortages & claims:** All shortages/claims must be made within 10 days of invoice date. We will make every effort to get all shortages replaced and shipped within 10 business days. Forms: [www.augustasportswear.com/help#returns-anchor](http://www.augustasportswear.com/help#returns-anchor)

**Shipping:** All cut and sew sublimated products are shipped directly from Mexico to the United States by Fed Ex.

The customer receives shipments 3-4 business days unless it gets held in customs. Saturday delivery is not available.

Augusta Sportswear Brands is not responsible for customs delays.

**Tracking orders:** Please keep in mind when tracking orders on the FedEx website, the website will not show the correct delivery date until orders pass through customs and are in the United States. Once product is in the United States, FedEx should update their tracking information.

**COD payment** is unavailable for sublimated orders.

Customer Care representatives are available Monday-Friday 8 a.m. to 6 p.m. EST by calling 1.800.237.6695 (hours may be reduced to 8 a.m. to 5 p.m. EST during non-peak season) or [sales@augustasportswear.com](mailto:sales@augustasportswear.com). Utilize our online chat for instant customer care help Monday-Friday 8 a.m to 6 p.m EST.

## LEGAL

**Copyright & registered trademark:** Uploading an image or logo constitutes the customer’s consent to give Augusta Sportswear a royalty-free, irrevocable license to use and reproduce such image or logo on customized products as ordered by the customer. The customer agrees to indemnify Augusta Sportswear for the use of such image or logo on the customized product as ordered by the customer. Augusta Sportswear Brands Customer Care will provide each customer with a licensed logo authorization form to release the rights to use with the customer’s order from.

Augusta Sportswear reserves the right to refuse any order with art deemed inappropriate because of an inappropriate logo or phrase.

**Compliance:** It is the customer’s responsibility to ensure that the uniform they have designed is compliant by consulting the governing body of their state, province, or league.

Visit [augustasportswear.com](http://augustasportswear.com) for full list of terms & conditions

### AUGUSTASPORTSWEAR.COM

©2023 Augusta Sportswear, Inc. Prices subject to change without notice.

©2023 SPORT MASKA INC. ALL RIGHTS RESERVED. CCM AND THE CCM STYLIZED LOGO ARE REGISTERED TRADEMARKS OF SPORT MASKA INC.

SPORT MASKA INC. RESERVES THE RIGHT TO CHANGE ALL PRODUCT SPECIFICATIONS AND/OR CUSTOM PROGRAMS. WHILE THE INFORMATION SHOWN IN THIS PUBLICATION WAS CORRECT AT THE TIME OF PRINTING, WE RESERVE THE RIGHT TO DISCONTINUE THE SALE OF PRODUCT OR CHANGE SPECIFICATIONS OR DESIGNS WITHOUT NOTICE OR OBLIGATION. COPYRIGHT SPORT MASKA INC. 2023. ALL RIGHTS RESERVED.





# FREESTYLE ORDERING INFORMATION

## Gamewear Program Order Types & Lead Times

### CCM ESSENTIALS SERIES

Order Type	Order Type Definition	Art Approval	Art Fee	Initial Art Lead Time	MOQ	Production Lead Times	COO	Expedited Shipping Time
<b>Standard Builder (SB)</b>	Order placed on Freestyle builder: All artwork selected from standard builder options on builder (design, logos, fonts, colors, placements, & logo size options)	NO	NO	N/A	12	15 Business Days	Mexico	2-3 Bus Days
<b>Standard Builder w/customer uploaded logos (SBL)</b>	Same as above but customer uploads team logos in vector format	YES	NO	1-2 Bus Days	12	15 Business Days	Mexico	2-3 Bus Days
<b>Custom Design Line Order (CDL)</b>	Order placed on builder but requesting any or all of following: <ul style="list-style-type: none"> <li>Non Builder design line requested</li> <li>Customer supplied non-vector artwork (redraw required)</li> <li>Custom pantone color match (\$50 / color)</li> <li>Custom fonts</li> <li>Custom logo placements</li> </ul>	YES	YES MSRP \$6.00/item for pattern fee (Up to first 50 units max)  MSRP \$100/PMS color match if applicable	2-4 Bus Days	12	20 Business Days	Mexico	2-3 Bus Days
<b>Mock Up Request (CDL or SBL)</b>	Artwork Request with no Purchase Order	YES	\$25.00	2-4 Bus Days	N/A	N/A	Mexico	N/A

### CCM PERFORMANCE SERIES

Order Type	Order Type Definition	Art Approval	Art Fee	Initial Art Lead Time	MOQ	Production Lead Times	COO	Expedited Shipping Time
<b>Standard Builder (SB)</b>	Order placed on Freestyle builder: All artwork selected from standard builder options on builder (design, logos, fonts, colors, placements, & logo size options)	YES	NO	N/A	20	60 Business Days	China	5-7 Bus Days
<b>Standard Builder w/customer uploaded logos (SBL)</b>	Same as above but customer uploads team logos in vector format	YES	NO	1-2 Bus Days	20	60 Business Days	China	5-7 Bus Days
<b>Custom Design Line Order (CDL)</b>	Order placed on builder but requesting any or all of following: <ul style="list-style-type: none"> <li>Non Builder design line requested</li> <li>Customer supplied non-vector artwork (redraw required)</li> <li>Custom pantone color match (\$50 / color)</li> <li>Custom fonts</li> <li>Custom logo placements</li> </ul>	YES	YES MSRP \$6.00/item for pattern fee (Up to first 50 units max)  MSRP \$100/PMS color match if applicable	2-4 Bus Days	20	60 Business Days	China	5-7 Bus Days
<b>Mock Up Request (CDL or SBL)</b>	Artwork Request with no Purchase Order	YES	\$25.00	2-4 Bus Days	N/A	N/A	China	N/A

- All production lead times from art approval
- Player personalization only available in sublimation NO twill option
- Available customization include stock and custom design lines, addition of team logos and selecting logo embellishment techniques for Performance Series only
- Minimum re-orders: Essential 1 pcs & Performance Series 20 pcs
- Custom colors and fonts require additional lead time as addressed below.
- Augusta Sportswear Brands will not be responsible for production delays caused by natural disasters, strikes, labor disputes, war, riots, civil discord, terrorism, US holidays, local Mexico holidays, government actions, customs delays, Fed Ex delays.
- Lead times are based on available capacity and may be adjusted during peak periods.
- They are also quoted at the time of art approval. If an order is placed and the lead time changes prior to art being approved they will receive the updated lead time at art approval.
- Lead time starts from art approval. Supplying artwork in vector format and supplying detailed information around placement, size, and colors will help speed up the process.



**AUGUSTA**  
SPORTSWEAR BRANDS



**CCM**

**ALL OUT.**