

ASB | 2023

AUGUSTASPORTSWEAR.CA 





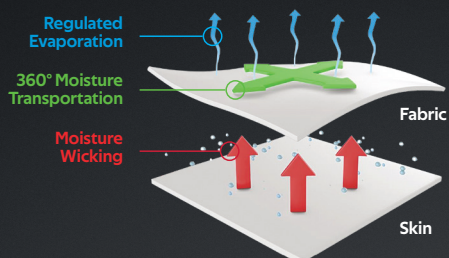
 **coolcore®**



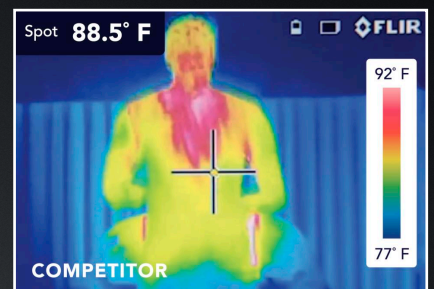
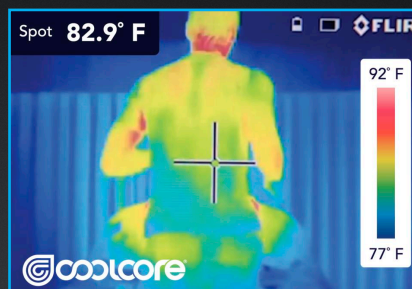


Coolcore® is engineered to distribute moisture quickly throughout the garment. As the moisture spreads it dries faster to keep you cool and comfortable, and has UPF 50 sun protection.

Patented Fabric Technology



Technology Comparison



The same athlete after 20 minutes of activity



NEW

COOLCORE® ESSENTIAL LONG SLEEVE TEE

222138 Adult S-3XL

222238 Youth S-XL

222338 Ladies XS-2XL

- 88% polyester/12% elastane Coolcore® with color secure® technology that helps prevent dye migration
- Garment protects against the sun with 50+ UPF
- Ladies' fit on style 222338
- Tagless label
- Set-in sleeves with rolled forward shoulder seam



ATHLETIC GREY
009

COLUMBIA BLUE
089

DARK GREEN
035

MAROON
745



OLIVE
039

PURPLE
747

WHITE
005

Available in Youth



BLACK
080

IRON
980

NAVY
065

ROYAL
060

SCARLET
083



222138

222338

229389

229511



NEW

COOLCORE® ESSENTIAL TEE

222136	Adult	S-3XL
222236	Youth	S-XL
222336	Ladies	XS-2XL

- 88% polyester/12% elastane Coolcore® with color secure® technology that helps prevent dye migration
- Garment protects against the sun with 50+ UPF
- Ladies' fit on style 222336
- Tagless label
- Set-in sleeves with rolled forward shoulder seam



ATHLETIC GREY 009 BLACK 080 COLUMBIA BLUE 089 DARK GREEN 035



IRON 980 MAROON 745 NAVY 065 OLIVE 039



PURPLE 747 ROYAL 060 SCARLET 083 WHITE 005

222336

222136

229389

222594



**CUTTER+
COLLECTION**

6908



1426

6915



1426



NEW

CUTTER+ V-NECK JERSEY

6907	Adult	S-3XL
6908	Youth	S-XL
6915	Ladies	XS-2XL
6916	Girls	S-L

- 96% polyester/4% spandex lightweight knit with color secure® technology that helps prevent dye migration
- Garment protects against the sun with 50+ UPF
- Ladies's fit on style 6915
- Tear away label
- Raglan sleeves



BLACK/
GOLD
421

BLACK/
SCARLET
500

NAVY/
SCARLET
S20

ORANGE/
BLACK
321

ROYAL/
SCARLET
W81

SCARLET/
BLACK
406

VEGAS
GOLD/
BLACK
252

WHITE/
NAVY
221



BLACK/
WHITE
420

COLUMBIA BLUE/
WHITE
293

DARK GREEN/
WHITE
438

GOLD/
WHITE
245

Available in Ladies & Girls

Available in Ladies & Girls



GRAPHITE/
WHITE
R04

LIME/
ROYAL
03W

MAROON/
WHITE
380

NAVY/
WHITE
301

ORANGE/
WHITE
320

PURPLE/
WHITE
450

ROYAL/
WHITE
280

SCARLET/
WHITE
408

WHITE/
BLACK
226

WHITE/
ROYAL
220

WHITE/
SCARLET
235



TEAL/
WHITE
331

VEGAS GOLD/
WHITE
250

WHITE
005

Available in Ladies & Girls only



222598



222798

222799

222599



Thumbhole
on Ladies'

ecoREVIVE®
SUSTAINABLE FABRIC TECHNOLOGY

NEW

VENTURA SOFT KNIT HOODIE



222598	Adult	S-3XL
222698	Youth	S-XL
222798	Ladies	XS-2XL

- Solids, 89% recycled polyester/11% spandex
- Heathers, 45% recycled polyester/44% polyester/11% spandex
- Tagless label
- Ladies' fit on style 222798
- 3-panel hood with drawcord on Adult only
- Set-in sleeves with thumbholes for warmth on Ladies'
- Side seam pockets on Adult
- Set-in sleeves
- Self-fabric cuffs and bottom band
- Side vents on Ladies'



BIRCH 907 BLACK 080* CARBON HEATHER E83 DARK GREEN 035 GREY HEATHER 013 MAROON 745



NAVY 065 OLIVE 039 ROYAL 060 SCARLET 083 STORM 932

Available in Ladies only



LAVENDER J63 ORCHID 47V TERRACOTTA J46



Back pocket
with zipper

223503



NEW

VENTURA SOFT KNIT CREW



223503 Adult S-3XL

- Solids, 89% recycled polyester/11% spandex
- Heathers, 45% recycled polyester/44% polyester/11% spandex
- Tagless label
- Crew neck with V stitching at neckline
- Set-in sleeves



BIRCH
907

BLACK
080

CARBON
HEATHER
E83

GREY
HEATHER
013

MAROON
745



NAVY
065

OLIVE
039

ROYAL
060

SCARLET
083

STORM
932

NEW

VENTURA SOFT-KNIT SHORTS



223504 Adult S-3XL

223604 Youth S-XL

- Solids, 89% recycled polyester/11% spandex
- Heathers, 45% recycled polyester/44% polyester/11% spandex
- Tagless label
- Covered elastic waistband with outside drawcord (inside drawcord on Youth)
- Front pockets with inner valuables pocket inside left pocket
- Back pocket with zipper
- 8-inch inseam



BLACK
080

CARBON
HEATHER
039

GREY HEATHER
013

NAVY
065

OLIVE
039

STORM
932

223504



222798

223704



Front pockets with inner valuables pocket inside left pocket



NEW

LADIES VENTURA SOFT KNIT SHORTS

223704 Ladies XS-2XL

- Solids, 89% recycled polyester/11% spandex
- Heathers, 45% recycled polyester/44% polyester/11% spandex
- Tagless label
- Covered elastic waistband with inside drawcord
- Back pocket with zipper
- V-notch at sides
- 5-inch inseam



BLACK
080

CARBON HEATHER
E83

GREY HEATHER
013



LAVENDER
J63

NAVY
065

ORCHID
47V



ROYAL
060

SCARLET
083

TERRACOTTA
J46



Back



NEW

VENTURA SOFT KNITSHORT SLEEVE HOODIE



222505 Adult S-3XL
222605 Youth S-XL

- Solids, 89% recycled polyester/11% spandex
- Heathers, 45% recycled polyester/44% polyester/11% spandex

- Tagless label
- 3-panel hood with drawcord on Adult only
- Side seam pockets
- Set-in sleeves



BIRCH
907

BLACK
080

CARBON HEATHER
E83

GREY HEATHER
013

NAVY
065

OLIVE
039

SCARLET
083

STORM
932



coolcore®



NEW COOLCORE® SHORT SLEEVE HOODIE
222142 Adult XS-3XL

222594

- 88% polyester/12% elastane Coolcore® with color secure® technology that helps prevent dye migration
- Garment protects against the sun with 50+ UPF
- Tagless label
- 3 panel crossover hood
- Set-in sleeves with rolled forward shoulder seam



ATHLETIC GREY
009

BLACK
080

DARK GREEN
035

IRON
980

MAROON
745



NAVY
065

OLIVE
039

ROYAL
060

SCARLET
083

WHITE
005



NEW COOLCORE® SLEEVELESS COMPRESSION TANK

R22CPM Adult XS-3XL

- 84% polyester/16% spandex elastane Xtreme compression cloth with Coolcore® technology
- 92% polyester/8% elastane stretch mesh inserts underarm
- Garment protects against the sun with 50+ UPF
- Tagless label
- Dropped tail



NEW COOLCORE® COMPRESSION SHORTS

R24CPM Adult XS-3XL

- 84% polyester/16% spandex elastane Xtreme compression cloth with Coolcore® technology
- 92% polyester/8% elastane stretch mesh gusset
- Garment protects against the sun with 50+ UPF
- Ultra tight fit
- Tagless label
- Branded soft brushed back exposed elastic waistband provides comfort



NEW COOLCORE® COMPRESSION FULL LENGTH TIGHT

R25CPM Adult XS-3XL

- 84% polyester/16% spandex elastane Xtreme compression cloth with Coolcore® technology
- 92% polyester/8% elastane stretch mesh insert at back of knee and gusset
- Garment protects against the sun with 50+ UPF
- Ultra tight fit
- Tagless label
- Branded soft brushed back exposed elastic waistband provides comfort



Waistband detail



R22CPM

R25CPM

R24CPM



coolcore®

TRAINING | NEW

222777



Hidden Side Pocket



NEW

LADIES COOLCORE® SKORT

222784 Ladies XS-2XL
222884 Girl S-L

- 88% polyester/12% elastane Coolcore® with color secure® technology that helps prevent dye migration
- Garment protects against the sun with 50+ UPF
- Tagless label
- Wide flat waistband for secure fit and comfort
- Hidden possession pocket in waistband
- Phone pocket on upper right thigh
- Flatlock stitching provides comfort and helps prevent chafing

222784



BLACK
080

IRON
980

NAVY
065



ROYAL
060

SCARLET
083

WHITE
005

Available in Ladies only



DARK GREEN
035

MAROON
745

PURPLE
747



222818



NEW

60/40 FLEECE SHORTS

222802 Adult S-3XL

- 9 ounce 60% cotton/40% polyester athletic fleece
- Tear away label
- Covered elastic waistband with inside drawcord
- Mock fly
- Side seam pockets
- 8-inch inseam



BLACK
080

CARBON HEATHER
E83

CHARCOAL HEATHER
017

NAVY
065



222818

222820

223722

223522



NEW

MOMENTUM SHORTS

223522	Adult	S-3XL
223622	Youth	S-XL
223722	Ladies	S-2XL

- Dry-Excel™ 100% polyester interlock smooth knit with color secure® technology that helps prevent dye migration
- Garment protects against the sun with 45+ UPF
- Ladies' fit on style 223722
- Tagless label
- 2-inch brushed back elastic waistband with inside drawcord
- Side seam pockets
- Side vents
- 6-inch inseam
- 5-inch inseam on Ladies'
- Youth inseam graded



BLACK
080

GRAPHITE
059

NAVY
065



ROYAL
060

SCARLET
083

SILVER
099



NEW LADIES COOLCORE® TANK

222777 Ladies XS-2XL

222877 Girls S-L

- 88% polyester/12% elastane Coolcore® with color secure® technology that helps prevent dye migration
- 92% polyester knitted mesh/8% elastane wicking knit inserts with Coolcore® technology
- Garment protects against the sun with 50+ UPF
- Tagless label
- Dropped tail hem and side vents



ATHLETIC GREY 009 BLACK 080 IRON 980 NAVY 065 ROYAL 060 SCARLET 083

Available in Ladies only



WHITE 005 COLUMBIA BLUE 089 DARK GREEN 035 MAROON 745 PURPLE 747



NEW LADIES COOLCORE® 7/8 TIGHT

222702 Ladies XS-2XL

222801 Girl S-L

- 89% polyester/11% elastane spandex knit with Coolcore® technology
- 88% polyester/12% elastane Coolcore®
- Fits close to body
- Tagless label
- High waisted, wide flat waistband for secure fit and comfort
- Inside key pocket
- Phone pocket on upper thigh on both legs
- Flatlock stitching provides comfort and helps prevent chafing



BLACK 080 CARBON 196 NAVY 065

222777

222702





Racerback



Mesh vented back panel



High waisted, wide flat waistband



Coolcore® is engineered to distribute moisture quickly throughout the garment.

As the moisture spreads it dries faster to keep you cool and comfortable, and has UPF 50 sun protection



Tri-tourney

Watercolor
Camo II



**FREESTYLE SUBLIMATED
TURBO TRAINING TEE**

228180	Adult	S-4XL
228280	Youth	S-XL
228380	Ladies	S-3XL
228480	Girls	S-XL

228380

Tri-Tourney

228180

Cutter



2430

1420



Chevron

Chevron



**FREESTYLE SEMI SUBLIMATED
SHORT SLEEVE RAGLAN TEE**

525080	Adult	S-3XL
625080	Youth	S-XL
725080	Ladies	XS-2XL



For available design lines visit
augustasportswear.ca/sublimation



Gradient

228378

Watercolor
Camo

Gradient

Tie Dye

228178

**ULTRA SOFT
COTTONY
FEEL!**



FREESTYLE
SUBLIMATED TURBO
COTTON-TOUCH POLY TEE

228178 Adult S-4XL
228278 Youth S-XL

229389

229511



LADIES FREESTYLE
SUBLIMATED TURBO
COTTON-TOUCH POLY TEE

228378 Ladies S-3XL





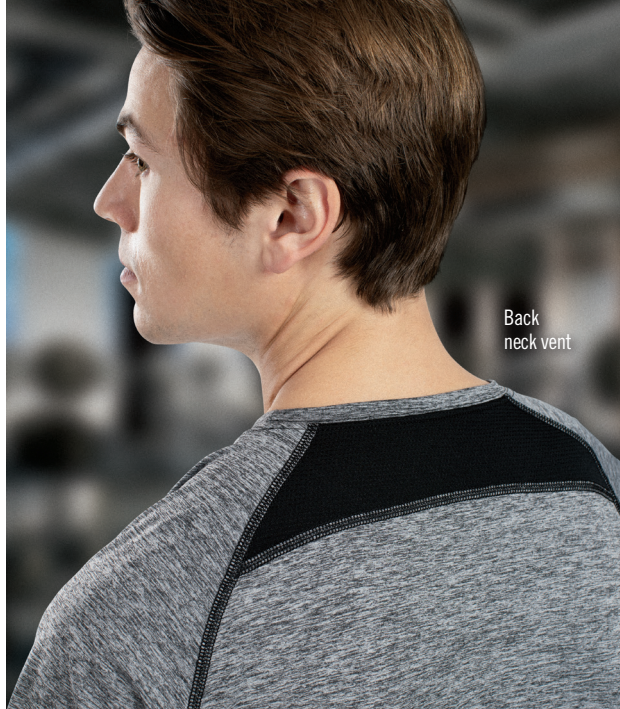
ELECTRIFY COOLCORE® COLLECTION



ELECTRIFY COOLCORE® TEE

222571	Adult	S-3XL
222671	Youth	S-XL
222771	Ladies	XS-2XL

- 87% polyester/13% elastane heathered wicking knit with Coolcore® technology
- 92% polyester knitted mesh/8% elastane wicking knit with Coolcore® technology
- Garment protects against the sun with 50+ UPF on body, 25+ on mesh inserts
- Ladies' fit on style 222771
- Tagless label
- Raglan sleeves



Back neck vent



Coolcore® mesh insert



Available in Adult only

*Heathering not available in White.



coolcore®



222571

229511

MORE FROM THE ELECTRIFY COOLCORE® COLLECTION

222570
222670
222770
Electrify
Coolcore® Long
Sleeve Tee



222574
222674
222774
Electrify
Coolcore®
Pullover



222589
222689
Electrify
Coolcore®
Hoodie



222572
222772
Electrify
Coolcore® Polo



ULTRA SOFT
COTTONY FEEL!



COORDINATING
HOODIE
223505 | 223605

222796



229389

222596



229511



STOCK COTTON-TOUCH™ POLY TEE

222596	Adult	S-3XL
222696	Youth	S-XL
222796	Ladies	S-3XL

- 5.6 ounce 95% polyester/ 5% spandex wicking knit
- Fully sublimated design
- Ladies' fit on style 222796
- Tagless label
- Garment protects against the sun with 50+ UPF
- Set-in sleeves

IMPORTANT DECORATION INFORMATION

Due to dyes used for creating this garment, dye migration is likely if screen printing or using certain heat transfers without preventive steps. You are advised to consult your Screen Print ink or Heat Transfer provider before decorating if you are unsure of the proper steps for decoration.

DECORATION RECOMMENDATIONS

- Low Temp or Low "bleed" Inks and Heat Transfers only
- For Platisols, a black or grey blocking layer should be considered
- Consider Silicone Inks as best alternative
- Consult with your ink or heat transfer provider if necessary before decorating



* Because of the manufacturing process of the fabric and garment, each tee will be unique



DRI-POWER® CORE PERFORMANCE TEE

629X2M Adult S-4XL

629X2B Youth S-XL

- 4.1 ounce 100% polyester interlock
- Dri-Power® Moisture Wicking Technology
- Heat sealed label
- Self-fabric crew neck collar
- Garment protects against the sun with 30+ UPF
- Set-in sleeves



WHITE
WHI

TRUE RED
TRR

STEEL
STE

STEALTH
SHL

ROYAL
ROY

NAVY
NAV

MAROON
MAR

Available in Adult Only



DARK GREEN
DGR

BLACK
BLK

CARDINAL
CRD

BURNT ORANGE
BOR

GOLD
GLD

PURPLE
PUR



SHADOW TONAL HEATHER COLLECTION



SHADOW TONAL HEATHER TRAINING TEE

2900 Adult S-3XL

2901 Youth S-L

2902 Ladies XS-2XL

- 100% polyester heathered wicking knit
- Tagless label
- Set-in sleeves



BLACK
080

NAVY
065

ORANGE
029

PURPLE
050

GOLD
025

KELLY
030

Available in
Adult Only



MAROON
045

RED
040

ROYAL
060

SILVER
099

POWER PINK
809

Available in
Ladies Only



MOMENTUM TEAM COLLECTION



Back



MOMENTUM TEAM TEE

223501	Adult	S-3XL 4XL-6XL in select colors
223601	Youth	XXS-XL
223701	Ladies	S-3XL

- Dry-Excel™ 100% polyester interlock smooth knit with color secure® technology that helps prevent dye migration
- Ladies' Fit on style 223701
- Tagless label
- Contrast color V-neck on Ladies
- Garment protects against the sun with 45+ UPF
- Set-in sleeves

Available in Adult 4XL-6XL



BLACK/
IRON
62U

BLACK/
WHITE
420

NAVY/
WHITE
301

ROYAL/
WHITE
280

SCARLET/
BLACK
406

WHITE/
IRON
61U

Available in Adult S-3XL & Youth



DK GREEN/
BLACK
444

ORANGE/
WHITE
320



COLUMBIA
BLUE/
WHITE
293

Available in Adult S-3XL & Ladies

Available in Adult S-3XL



GOLD/
WHITE
245

KELLY/
WHITE
340

ROYAL/
GOLD
281

SCARLET/
NAVY
W86

VEGAS
GOLD/
BLACK
252

Available in Adult S-3XL, Youth & Ladies



IRON/
WHITE
99D

MAROON/
BLACK
388

PURPLE/
BLACK
496

ROYAL/
BLACK
289

SCARLET/
WHITE
408

MORE FROM THE MOMENTUM TEAM COLLECTION

223502
223602
223702

Momentum
Team Long
Sleeve Tee



223500
223600
223700

Momentum
Team 1/2 Zip
Pullover



222540
222640
Momentum
Team
Hoodie



P820
Momentum
Team Cap





SOFT-SPUN POLY COLLECTION



SUPER SOFT-SPUN POLY TEE

6842	Adult	S-3XL
6843	Youth	S-XL
6844	Ladies	XS-2XL

- 100% soft-spun polyester with color secure® technology that helps prevent dye migration
- Soft cottony feel
- Ladies' Fit on style 6844
- Non branded tagless label
- Tonal topstitching
- Set-in sleeves with angled shoulder seam for mobility and comfort

6842



6844



229511

2430



ATHLETIC
GREY
009

BLACK
080

LAKE
55T

NAVY
065



ROYAL
060

SCARLET
083

WHITE
005

Available in Adult & Ladies



CELERY
54T

IRON
980

MAROON
745

OLIVE
039

Available in Adult & Ladies



OYSTER
53T

Available in Ladies only



DUSTY
ROSE
23D

MORE FROM THE SOFT-SPUN POLY COLLECTION

6845
6847
Super Soft-Spun
Poly Long Sleeve
Tee





MOMENTUM TEE

222818	Adult	S-4XL 5XL & 6XL in select colors
222819	Youth	XXS-XL
222820	Ladies	S-3XL

- Dry-Excel™ 100% polyester interlock smooth knit with color secure® technology that helps prevent dye migration
- Ladies' fit on 222820
- Tagless label
- Garment protects against the sun with 45+ UPF
- Set-in sleeves

Available in Adult 5XL-6XL



Available in Adult 5XL-6XL



Available in
Adult/Youth Only



MOMENTUM

Made with soft touch
comfort fabric



MORE FROM THE MOMENTUM COLLECTION

222822
222823
222824
Momentum
Long Sleeve
Tee



222830
222831
Momentum
Hoodie



223522
223622
223722
Momentum
Shorts





ATTAIN COLLECTION



ATTAIN RAGLAN SLEEVE TEE

2790	Adult	S-3XL 4XL-6XL in select colors
2791	Youth	XXS-XL
2792	Ladies	XS-3XL
2793	Girls	S-L

- 100% polyester wicking knit with color secure® technology that helps prevent dye migration
- Ladies' fit on style 2792
- Longer length and bigger chest for added comfort
- Raglan sleeves



COLUMBIA BLUE 089 GRAPHITE 059 LIME 096 POWER BLUE 812 POWER PINK 809



TEAL 063 DARK GREEN 035 PURPLE* 747



ELECTRIC ORANGE 79N WHITE 005 SAFETY YELLOW* 243

Available in Adult, Youth, & Ladies



CARDINAL J36 GOLD 025 KELLY 030 ORANGE 029 MAROON* 745 VEGAS GOLD 023

Available in 4XL-6XL Adult Sizes



BLACK 080 NAVY 065 SCARLET 083 ROYAL 060 SILVER 099

*Safety Yellow is ANSI certified

*Maroon & Purple shades can vary by brand, please contact our Customer Care with questions

2790

2792

229394

229511

MORE FROM THE ATTAIN COLLECTION

2785
2786
2787
Attain 1/4 Zip Pullover



2795
2796
2797
Attain Long Sleeve Tee



2780
2781
Attain Shorts



1565
1566
1567
Attain Two Button Jersey



4794
4795
Ladies Attain Sleeveless Jersey





Non-branded tagless label



COORDINATING LONG SLEEVE TEE

788 | 789 | 1788

CORE color choice

NEXGEN WICKING TEE



790	Adult	S-3XL 4XL in select colors
791	Youth	XS-XL
1790	Ladies	XS-3XL

- 100% polyester wicking knit with color secure® technology that helps prevent dye migration
- Ladies' fit on style 1790
- Non-branded tagless label
- Set-in sleeves
- Safety Yellow is ANSI certified

Available in Adult 4XL



Available in Adult/Youth Only



Available in Adult Only



Available in Adult/Ladies Only



*Safety Yellow is ANSI certified



790

1420



1790

2430



Half Court



Jump Shot



**FREESTYLE SUBLIMATED
TURBO LONG SLEEVE TEE**

5S1S2S Adult S-3XL

5S1S2X Ladies S-3XL

Gradient
Explosion



**FREESTYLE SUBLIMATED TURBO
LONG SLEEVE TRAINING TEE**

228112 Adult XS-3XL

228212 Youth S-XL

Block Stripe



Spectator



**ULTRA SOFT
COTTONY FEEL!**



**FREESTYLE SUBLIMATED TURBO
COTTON-TOUCH POLY
LONG SLEEVE TEE**

228177 Adult S-4XL

228277 Youth S-XL

228377 Ladies S-3XL



Back neck vent



**ELECTRIFY COOLCORE®
LONG SLEEVE TEE**

222570	Adult	S-3XL
222670	Youth	S-XL
222770	Ladies	XS-2XL

- 87% polyester/13% elastane heathered wicking knit with Coolcore® technology
- 92% polyester knitted mesh/8% elastane wicking knit with Coolcore® technology
- Garment protects against the sun with 50+ UPF on body, 25+ on mesh inserts
- Tagless label
- Raglan sleeves



222570



222770

Coolcore®
mesh insert



Thumbholes on Ladies



ATHLETIC GREY 55M	BLACK HEATHER K94	DARK GREEN V97	NAVY HEATHER U22	ROYAL HEATHER U55
----------------------	----------------------	-------------------	---------------------	----------------------



SCARLET HEATHER T20	*WHITE 005	KELLY HEATHER U10	OLIVE HEATHER 49N
---------------------------	---------------	-------------------------	-------------------------



GOLD HEATHER E70	MAROON HEATHER T09	ORANGE HEATHER V98	PURPLE HEATHER U86
------------------------	--------------------------	--------------------------	--------------------------

*Heathering not available in White.

MORE FROM THE ELECTRIFY COOLCORE® COLLECTION

222571
222671
222771
Electrify
Coolcore®
Tee



222574
222674
222774
Electrify
Coolcore®
Pullover



222589
222689
Electrify
Coolcore®
Hoodie



222572
222772
Electrify
Coolcore®
Polo





MOMENTUM COLLECTION

MOMENTUM

*Made with soft touch
comfort fabric*



**MOSSY OAK® MOMENTUM
LONG SLEEVE TEE**

222836 Adult S-4XL
222838 Ladies S-3XL

- Dry-Excel™ 100% polyester interlock smooth knit with color secure® technology that helps prevent dye migration
- Fully sublimated design
- Garment protects against the sun with 45+ UPF
- Ladies' fit on style 222838
- Tagless label
- Set-in sleeves



Ladies fit

**COORDINATING
HOODIE**

223515



MO ELEMENTS
AQUA BLACKFIN
86T

MO ELEMENTS
AQUA STEELHEAD
85T

MO ELEMENTS
WAKEFORM EQUATOR
87T

MO ELEMENTS
WAKEFORM GALE
88T

MO HABITAT
82T

MO ORIGINAL
BOTTOMLAND
42T



SHADOW TONAL HEATHER COLLECTION



SHADOW TONAL HEATHER LONG SLEEVE TEE

2903 Adult S-3XL

- 100% polyester heathered wicking knit
- Tagless label
- Set-in sleeves



BLACK
080

MAROON
045

NAVY
065

ORANGE
029



RED
040

ROYAL
060

SILVER
099

MORE FROM THE **SHADOW TONAL** HEATHER COLLECTION



2900
2901
2902

Shadow Tonal
Heather
Training Tee



2908
2909

Shadow Tonal
Heather 1/4
Zip Pullover



5412
5413

Shadow Tonal
Heather Polo

229556





MOMENTUM TEAM COLLECTION

223502



223702



229556



221398



Back

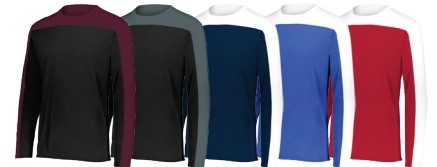


MOMENTUM TEAM LONG SLEEVE TEE

223502	Adult	S-4XL
223602	Youth	S-XL
223702	Ladies	S-3XL

- Dry-Excel™ 100% polyester interlock smooth knit with color secure® technology that helps prevent dye migration
- Ladies' Fit on style 223702
- Tagless label
- Garment protects against the sun with 45+ UPF
- Set-in sleeves

Available in Adult, Youth & Ladies



BLACK/
MAROON
486

BLACK/
IRON
62U

NAVY/
WHITE
301

ROYAL/
WHITE
280

SCARLET/
WHITE
408

Available in Adult, Youth & Ladies



WHITE/
BLACK
226

WHITE/
IRON
61U

PURPLE/
BLACK
496

ROYAL/
BLACK
289

SCARLET/
BLACK
406

Available in Adult & Youth Only



KELLY/
BLACK
342

BLACK/
DK GREEN
429

ORANGE/
WHITE
320

MORE FROM THE MOMENTUM TEAM COLLECTION

223501
223601
223701

Momentum
Team Tee



223500
223600
223700

Momentum
Team 1/2 Zip
Pullover



222540
222640

Momentum
Team
Hoodie



P820
Momentum
Team Cap





SUPER SOFT-SPUN
POLY LONG SLEEVE TEE

6845 Adult S-3XL
6847 Ladies XS-2XL

- 100% soft-spun polyester with color secure® technology that helps prevent dye migration
- Soft cottony feel
- Ladies' Fit on style 6847
- Non branded tagless label
- Tonal topstitching
- Set-in sleeves with angled shoulder seam for mobility and comfort



BLACK
080

IRON
980

NAVY
065

OLIVE
039



ROYAL
060

WHITE
005

Available in Adult only



CELERY
54T

LAKE
55T

MAROON
745

OYSTER
53T

SCARLET
083

MORE FROM THE
SOFT-SPUN POLY COLLECTION

6842
6843
6844
Super
Soft-Spun
Poly Tee



6845

6847

2430

229511



MOMENTUM COLLECTION

MOMENTUM

*Made with soft touch
comfort fabric*



MOMENTUM LONG SLEEVE TEE

222822	Adult	S-3XL 4XL in select colors
222823	Youth	S-XL
222824	Ladies	S-3XL

- Dry-Excel™ 100% polyester interlock smooth knit with color secure® technology that helps prevent dye migration
- Ladies' fit on 222824
- Tagless label
- Garment protects against the sun with 45+ UPF
- Set-in sleeves

Available in Adult 4XL



BLACK 080 WHITE 005 NAVY 065 ROYAL 060 SCARLET 083

Available in Adult & Youth only



GRAPHITE 059 SILVER 099

Available in Adult only



PURPLE 747 SAFETY YELLOW 243

Available in Adult only



ORANGE 029 DARK GREEN 035 MAROON 745 GOLD 025 COLUMBIA BLUE 089



KELLY 030 POWER BLUE 812 VEGAS GOLD 023 CARDINAL 136

Available in Adult & Ladies



OLIVE 039

Available in Ladies only



POWER PINK 809

MORE FROM THE MOMENTUM COLLECTION

222818
222819
222820
Momentum Tee



222830
222831
Momentum Hoodie



223522
223622
223722
Momentum Shorts



ATTAIN COLLECTION



ATTAIN WICKING LONG SLEEVE TEE

2795 Adult S-3XL
4XL in select colors

2796 Youth S-L

2797 Ladies XS-3XL

- 100% polyester wicking knit with color secure® technology that helps prevent dye migration
- Ladies' fit on style 2797
- Longer length and bigger chest for added comfort
- Tear away label
- Raglan sleeves

Available in Adult 4XL



BLACK
080

WHITE
005

SCARLET
083

ROYAL
060

Available in Adult only



SEAFOAM
830

BUTTER
K20

SAFETY
YELLOW*
243

DARK
GREEN
035

PURPLE
747

Available in Adult & Youth



VEGAS
GOLD
023

ORANGE
029

KELLY
030

GOLD
025

Available in Adult
& Ladies only



GRAPHITE
059

COLUMBIA
BLUE
089

MAROON
745

Available in Adult 4XL



NAVY
065

SILVER
099

Available in
Ladies only



POWER
PINK
809



MORE FROM THE ATTAIN COLLECTION



2785
2786
2787

Attain 1/4 Zip
Pullover

2790
2791
2792
2793

Attain Short
Sleeve Tee

2780
2781

Attain
Shorts

1565
1566
1567

Attain Two
Button Jersey

4794
4795

Ladies Attain
Sleeveless
Jersey

*Safety Yellow is ANSI certified

*Maroon & Purple shades can vary by brand,
please contact our Customer Care with questions



DRI-POWER® CORE PERFORMANCE LONG SLEEVE TEE

631X2M Adult S-4XL

- 4.1 ounce 100% polyester interlock
- Dri-Power® Moisture Wicking Technology
- Heat sealed label
- Garment protects against the sun with 30+ UPF
- Set-in sleeves



BLACK BLK BURNT ORANGE BOR CARDINAL CRD DARK GREEN DGR GOLD GLD MAROON MAR NAVY NAV



PURPLE PUR ROYAL ROY STEALTH SHL STEEL STE TRUE RED TRR WHITE WHI



NEXGEN



NEXGEN LONG SLEEVE TEE

788 Adult S-3XL

789 Youth S-XL

1788 Ladies XS-3XL

- 100% polyester wicking knit
- Non-branded pad print label
- Set-in sleeves

Available in Adult, Youth & Ladies



BLACK 080 GRAPHITE 059 NAVY 065 SCARLET 083 ROYAL 060 SILVER GREY 099 WHITE 005

Available in Adult & Ladies



COLUMBIA BLUE 089 DARK GREEN 035 KELLY 030 ORANGE 029 PURPLE 747 POWER BLUE 812

Available in Adult Only



GOLD 025 OLIVE 039 MAROON 745 VEGAS GOLD 023 SAFETY YELLOW 243 ELECTRIC ORANGE 79N

Available in Ladies Only



POWER PINK 809



Ladies Fit



229394

229556

Spectator



Watercolor III



**FREESTYLE SUBLIMATED
LONG SLEEVE HOODIE**

228143	Adult	S-4XL
228243	Youth	S-XL
228343	Ladies	S-3XL

Gradient



Block Stripe



**ULTRA SOFT
COTTONY FEEL!**



**FREESTYLE SUBLIMATED
COTTON-TOUCH™ POLY HOODIE**

228148	Adult	S-3XL
228248	Youth	S-XL
228348	Ladies	S-3XL



ELECTRIFY COOLCORE®
COLLECTION



ELECTRIFY COOLCORE® HOODIE

222589 Adult S-3XL

222689 Youth S-XL

- 87% polyester/13% elastane heathered wicking knit with Coolcore® technology
- Garment protects against the sun with 50+ UPF
- Heat sealed label
- 3-piece hood
- Set-in sleeves with rolled forward shoulder seam



ATHLETIC GREY HEATHER 55M
BLACK HEATHER K94
NAVY HEATHER U22
ROYAL HEATHER U55
SCARLET HEATHER T20
*WHITE 005

Available in Adult Only



DARK GREEN HEATHER V97
GOLD HEATHER E70
KELLY HEATHER U10
MAROON HEATHER T09
OLIVE HEATHER 49N
ORANGE HEATHER V98
PURPLE HEATHER U86

*Heathering not available in White.



STOCK COTTON-TOUCH POLY
COLLECTION



STOCK COTTON-TOUCH™ POLY HOODIE

223505 Adult S-3XL

223605 Youth S-XL

- 5.6 ounce 95% polyester/5% spandex wicking knit
- Fully sublimated design
- Garment protects against the sun with 50+ UPF
- Tagless label
- 3 panel hood
- Set-in sleeves



BLACK CLOUD PRINT 65T
COL BLUE CLOUD PRINT 67T
DK GREEN CLOUD PRINT 62T
GOLD CLOUD PRINT 61T
NAVY CLOUD PRINT 64T
ORANGE CLOUD PRINT 68T
ROYAL CLOUD PRINT 63T
SCARLET CLOUD PRINT 66T
SILVER CLOUD PRINT 69T
STORM CLOUD PRINT 70T



GLACIER COL BLUE 76V
GLACIER BLACK 87V
GLACIER DK GREEN 88V
GLACIER SCARLET 86V
GLACIER GOLD 85V
GLACIER NAVY 84V
GLACIER ORANGE 83V
GLACIER PURPLE 82V
GLACIER ROYAL 81V
GLACIER SILVER 80V



SHOCKWAVE GRAPHITE 66V
SHOCKWAVE DK GREEN 67V
SHOCKWAVE NAVY 68V
SHOCKWAVE SCARLET 70V
SHOCKWAVE GOLD 71V
SHOCKWAVE KELLY 72V
SHOCKWAVE ORANGE 73V
SHOCKWAVE ROYAL 75V
SHOCKWAVE PURPLE 74V
SHOCKWAVE SILVER 77V

* Because of the manufacturing process of the fabric and garment, each hoodie will be unique

* See decoration recommendations for this style & more in the Stock Cotton-Touch Poly Collection pg. 21

Made with soft touch
comfort fabric

COORDINATING LONG SLEEVE TEE

222836 | 222838



MOSSY OAK® MOMENTUM HOODIE

223515 Adult S-4XL

- Dry-Excel™ 100% polyester interlock smooth knit with color secure® technology that helps prevent dye migration
- Fully sublimated design
- Garment protects against the sun with 45+ UPF
- Tagless label
- 3 panel crossover hood
- Set-in sleeves



MO ELEMENTS
AQUA BLACKFIN
86T

MO ELEMENTS
AQUA STEELHEAD
85T

MO ELEMENTS
WAKEFORM
EQUATOR
87T

MO ELEMENTS
WAKEFORM GALE
88T

MO HABITAT
82T

MO ORIGINAL
BOTTOMLAND
42T



MOMENTUM HOODIE

222830 Adult S-3XL
4XL in select colors

222831 Youth S-XL

- Dry-Excel™ 100% polyester interlock smooth knit with color secure® technology that helps prevent dye migration
- Tagless label
- Garment protects against the sun with 45+ UPF
- Set-in sleeves

Available in Adult 4XL



BLACK
080

GRAPHITE
059

NAVY
065

ROYAL
060

SCARLET
083

SILVER
099

WHITE
005

Available in
Adult & Youth
only



COLUMBIA
BLUE
089

Available in Adult only



DARK
GREEN
035

GOLD
025

KELLY
030

MAROON
745

OLIVE
039

ORANGE
029

POWER
BLUE
812

PURPLE
747

SAFETY
YELLOW
243



Gradient

228181



**FREESTYLE SUBLIMATED
SLEEVELESS HOODIE**

228147 Adult S-3XL

228247 Youth S-XL



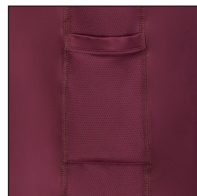
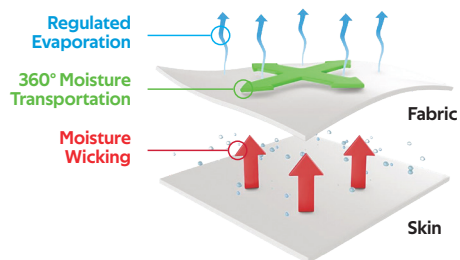
Spectator



Watercolor Camo II

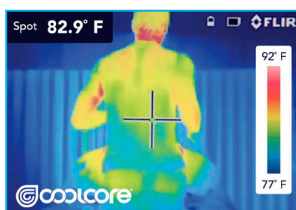


Patented Fabric Technology

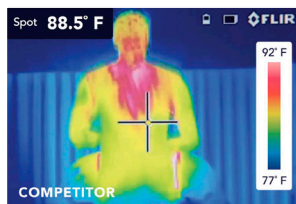


Right side insert pocket

Technology Comparison



The same athlete after 20 minutes of activity



COOLCORE® SLEEVELESS HOODIE

222590 Adult XS-3XL

- 88% polyester/12% elastane Coolcore® with color secure® technology that helps prevent dye migration
- 92% polyester knitted mesh/8% elastane wicking knit inserts with Coolcore® technology
- Garment protects against the sun with 50+ UPF
- Tagless label
- Overlapping hood



BLACK
080

IRON
980

MAROON
745

NAVY
065



ROYAL
060

SCARLET
083

WHITE
005



222594



Coolcore® is engineered to distribute moisture quickly throughout the garment.

As the moisture spreads it dries faster to keep you cool and comfortable, and has UPF 50 sun protection



COOLCORE® TANK

222593 Adult S-3XL

- 88% polyester/12% elastane Coolcore® with color secure® technology that helps prevent dye migration
- Garment protects against the sun with 50+UPF
- Tagless label
- Rolled forward shoulder and side seam

222594



BLACK
080

IRON
980

MAROON
745

NAVY
065



ROYAL
060

SCARLET
083

WHITE
005



ESSENTIAL MUSCLE TANK

64MTTM Adult S-3XL

- 4.75 ounce
- 60% cotton/40% polyester
- Oxford 47% cotton & 53% polyester
- Dri-Power® Moisture Wicking Technology
- Odor protection
- Tagless label
- Garment protects against the sun with 30+ UPF



NAVY
NAV

BLACK
BLK

OXFORD
OXF

ROYAL
ROY

TRUE RED
TRR

WHITE
WHI



TRAINING TANK

703 Adult S-3XL

704 Youth S-L

1705 Ladies XS-2XL

1706 Girls S-L

- 100% polyester wicking knit
- Tear away label

Available in Adult,
Youth, & Ladies



BLACK
008

WHITE
005

RED
040

ROYAL
060

COLUMBIA
BLUE
089

NAVY
065

Available in Adult, Youth, & Ladies



ORANGE
029

GOLD
025

PURPLE
050

KELLY
030

SILVER
GREY
016

LIME
096

Available in Adult, Youth,
& Ladies



GRAPHITE
059

POWER
YELLOW
810

POWER
BLUE
812

Available in
Adult & Ladies



MAROON
045

DARK
GREEN
035

Available in
Ladies only



POWER
PINK
809



Ladies Fit



LADIES CROSSOVER TANK

2436 Ladies S-2XL
2437 Girls S-L

- 84% polyester/16% spandex knit with color secure® technology that helps prevent dye migration
- 90% polyester/10% spandex wicking mesh inserts and yoke with color secure® technology
- Tagless label



Racerback



LADIES POLY/SPANDEX SOLID RACERBACK TANK

1202 Ladies S-2XL
1203 Girls S-L

- Heavyweight 90% polyester/10% spandex knit
- Tagless label
- Wide racerback styling



Wide Racerback



ATTAIN COLLECTION



LADIES ATTAIN SLEEVELESS TEE

4794 Ladies S-2XL
4795 Girls XS-L

- 100% polyester wicking knit with color secure® technology that helps prevent dye migration
- Tear away label





LADIES SOJOURNER TANK

2434 Ladies XS-2XL

- 100% polyester wicking smooth knit body
- 100% polyester lightweight wicking mesh back
- Tagless label
- Dropped tail



Racerback

229389



LADIES LUX TRI-BLEND TANK

3078 Ladies S-3XL

3079 Girls S-L

- 3.8 ounce, 50% polyester/25% cotton/25% rayon tri-blend knit
- Fits loose to body
- Tear away label
- Scoop neck
- Contoured bottom



Available in Ladies only



Racerback with keyhole





Downfield



FREESTYLE SUBLIMATED
DYNASPEED LONG
SLEEVE COMPRESSION

2P9S2S Adult S-4XL



Advantage



FREESTYLE SUBLIMATED
DYNASPEED PERFORMANCE
HALF-SLEEVE COMPRESSION

2P0S2S Adult S-4XL



Speckled
Gradient

5P4S2S



For available design lines visit
augustasportswear.ca/sublimation



Fracture



FREESTYLE SUBLIMATED
DYNASPEED SHORT
SLEEVE COMPRESSION TEE

2P8S2S Adult S-4XL



Fracture



FREESTYLE SUBLIMATED
DYNASPEED SLEEVELESS
COMPRESSION TEE

2P7S2S Adult S-4XL



Downfield

2P7S2S

5P4S2S



Back



COOLCORE® HALF SLEEVE COMPRESSION TEE

R21CPM Adult S-3XL

- 84% polyester/16% spandex elastane Xtreme compression cloth with Coolcore® technology
- 92 polyester/8% elastane stretch mesh insert on center back and underarm
- Garment protects against the sun with 50+ UPF
- Tagless label
- Raglan sleeves
- Dropped tail



BLACK
BLK

GRID IRON
SILVER
GSV

MAROON
MAR

NAVY
NAV



ROYAL
ROY

STEALTH
SHL

TRUE RED
TRR

WHITE
WHI



COOLCORE® COMPRESSION 7/8 TIGHT

R23CPM Adult XS-3XL

- 84% polyester/16% spandex elastane Xtreme compression cloth with Coolcore® technology
- 92 polyester/8% elastane stretch mesh insert at back of knee and gusset
- Garment protects against the sun with 50+ UPF
- Ultra tight fit
- Tagless label
- Branded soft brushed back exposed elastic waistband provides comfort



BLACK
BLK

GRID IRON
SILVER
GSV

STEALTH
SHL

WHITE
WHI



Coolcore® is engineered to distribute moisture quickly throughout the garment.

As the moisture spreads it dries faster to keep you cool and comfortable, and has UPF 50 sun protection



Back



COOLCORE® LONG SLEEVE COMPRESSION TEE

R20CPM Adult S-3XL

- 84% polyester/16% spandex elastane Xtreme compression cloth with Coolcore® technology
- 92% polyester/8% elastane stretch mesh inserts with Coolcore® technology
- Garment protects against the sun with 50+ UPF
- Tagless label
- Raglan sleeves



BLACK
BLK

GRID IRON
SILVER
GSV

MAROON
MAR

NAVY
NAV



ROYAL
ROY

STEALTH
SHL

TRUE RED
TRR

WHITE
WHI





HYPERFORM COMPRESSION HALF SLEEVE TEE

2606 Adult S-3XL

- 84% polyester/16% spandex knit
- Ultra tight fit
- Tagless label
- Raglan Sleeves
- Flatlock stitching provides comfort and helps prevent chafing



BLACK
080

GRAPHITE
059

NAVY
065

WHITE
005



HYPERFORM COMPRESSION TEE

2600 Adult S-3XL

2601 Youth S-L

- 84% polyester/16% spandex knit
- Ultra tight fit
- Tagless label
- Raglan sleeves
- Flatlock stitching provides comfort and helps prevent chafing

Available in Adult only



BLACK
080

WHITE
005

NAVY
065

GRAPHITE
059



RED
040

ROYAL
060



HYPERFORM COMPRESSION SLEEVELESS TEE

2602 Adult S-3XL

2603 Youth S-L

- 84% polyester/16% spandex knit
- Ultra tight fit
- Tagless label
- Flatlock stitching provides comfort and helps prevent chafing

Available in Adult only



BLACK
080

WHITE
005

RED
040

ROYAL
060

NAVY
065

SILVER
059

GRAPHITE
059



HYPERFORM COMPRESSION LONG SLEEVE TEE

2604 Adult S-3XL
2605 Youth S-L

- 84% polyester/16% spandex knit
- Ultra tight fit
- Tagless label
- Raglan sleeves
- Flatlock stitching provides comfort and helps prevent chafing



HYPERFORM COMPRESSION CALF-LENGTH TIGHT

2618 Adult S-3XL
2619 Youth M-L

- 84% polyester/16% spandex knit
- Ultra tight fit
- Tagless label
- Soft brushed back exposed elastic waistband provides comfort
- Flatlock stitching provides comfort and helps prevent chafing



HYPERFORM COMPRESSION TIGHT

2620 Adult XS-3XL

- 84% polyester/16% spandex knit
- Ultra tight fit
- Tagless label
- Soft brushed back exposed elastic waistband provides comfort
- Flatlock stitching provides comfort and helps prevent chafing



HYPERFORM COMPRESSION SHORTS

2615 Adult S-3XL
2616 Youth M-L

- 84% polyester/16% spandex knit
- Ultra tight fit
- Tagless label
- Soft brushed back exposed elastic waistband provides comfort
- Flatlock stitching provides comfort and helps prevent chafing
- 6-inch inseam
- Youth inseam graded

Available
in Adult
only



BLACK 080 WHITE 005 RED 040 ROYAL 060



NAVY 065 GRAPHITE 059



BLACK 080 GRAPHITE 059 NAVY 065 WHITE 005



BLACK 080 GRAPHITE 059 NAVY 065 WHITE 005

Available
in Adult
only



BLACK 080 WHITE 005 NAVY 065



Zipper on Outside Lower Leg



Phone pocket



LADIES HIGH RISE TECH TIGHT

221398 Ladies XS-2XL
Tall ST-2XLT

- Dry-Excel™ 82% polyester/18% spandex heavyweight knit with high mechanical stretch
- Fits close to body
- Tagless label
- High waisted, wide flat waistband for secure fit and comfort
- Reflective detail on lower back leg
- Flatlock stitching provides comfort and helps prevent chafing



BLACK
080



CARBON
J96



NAVY
065



LADIES HYPERFORM COMPRESSION TIGHT

2630 Ladies XS-2XL

- Heavyweight 88% polyester/ 12% spandex knit
- Tagless label
- Low rise, wide flat waistband for secure fit and comfort
- Hidden possession pocket in waistband
- Flatlock stitching provides comfort and helps prevent chafing



LADIES HYPERFORM COMPRESSION CAPRI

2628 Ladies XS-2XL

- Heavyweight 88% polyester/ 12% spandex knit
- Tagless label
- Hidden possession pocket in waistband
- Low rise, wide flat waistband for secure fit and comfort
- Flatlock stitching provides comfort and helps prevent chafing



LADIES HYPERFORM FITTED SHORTS

2625 Ladies XS-2XL

- Heavyweight 88% polyester/12% spandex knit
- Tagless label
- Low rise, soft brushed back exposed elastic waistband provides comfort
- No front seam
- U-shaped gusset
- Flatlock stitching provides comfort and helps prevent chafing
- 3 1/2-inch inseam



LADIES DARE SHORTS

1232 Ladies S-2XL
1233 Girls S-L

- Heavyweight 88% polyester/ 12% spandex knit
- Tagless label
- Low rise, wide flat waistband for secure fit and comfort
- No front seam
- U-shaped gusset
- Flatlock stitching provides comfort and helps prevent chafing
- 2 1/2-inch inseam
- Girls inseam graded



BLACK
080

NAVY
065



BLACK
080

NAVY
065



BLACK
080



BLACK
080

DARK GREEN
035

MAROON
045

NAVY
065



PURPLE
050

RED
040

ROYAL
060



LADIES VENT BRA

223300 Ladies XS-2XL



Keyhole Back Detail

- Dry-Excel™ Heavyweight 90% polyester/10% spandex knit
- 92% polyester/8% spandex wicking pinhole mesh back



229389



LADIES ALL SPORT SPORTS BRA

2417 Ladies XS-2XL



Pinhole Mesh
Racerback

- Heavyweight 90% polyester/10% spandex knit
- 92% polyester/8% spandex wicking pinhole mesh back panel and inserts
- Tagless label
- Flatlock seamed construction for extra comfort
- Reinforced armhole seams for added support
- Soft brushed back elastic at hem





Advantage



10-inch
inseam



**FREESTYLE SUBLIMATED
DYNASPEED SHORTS**

5P4S2S Adult S-4XL



Marble



Downfield



Marble



10-inch
inseam
(Youth
inseam
graded)



**FREESTYLE SUBLIMATED
TRAINING SHORTS**

228181 Adult S-3XL

228281 Youth S-XL



Watercolor Camo



Gradient



Back zippered pocket



Side seam
pockets

8 1/2-inch
inseam

Reflective
V-notch



LEGEND STRETCH WOVEN SHORTS

R20SWM Adult S-4XL
5XL-6XL in select colors

- 90% polyester/10% spandex lightweight stretch woven fabric with durable water-repellent finish to keep you dry
- Micromesh inseam gusset
- Heat sealed label
- Covered elastic waistband with inside drawcord

Available in 5XL-6XL



BLACK
BLK



KHAKI
O10



GRID IRON
SILVER
GSV



NAVY
NAV



STEALTH
SHL



Coolcore® is engineered to distribute moisture quickly throughout the garment.

As the moisture spreads it dries faster to keep you cool and comfortable, and has UPF 50 sun protection

222590



Side seam pockets

7-inch inseam



COOLCORE® SHORTS

222594 Adult S-3XL

- 88% polyester/12% elastane Coolcore® with color secure® technology that helps prevent dye migration
- 92% polyester knitted mesh/8% elastane wicking knit inserts with Coolcore® technology
- Garment protects against the sun with 50+ UPF
- Tagless label
- Covered elastic waistband
- Side seam pockets



ATHLETIC
GREY
009

BLACK
080

IRON
980

MAROON
745

NAVY
065

ROYAL
060





WELD COLLECTION



Side seam
pockets

8.5-inch
inseam



WELD SHORTS

229556 Adult S-4XL
229656 Youth S-XL

- 90% polyester/10% spandex
- Dry-Excel™ 100% polyester pinhole micromesh inseam gusset
- Tagless label
- Covered elastic waistband with inside drawcord



BLACK
080

CARBON
J96

KHAKI
010



NAVY
065

ROYAL
060

SILVER
099



Back Zippered Pocket



Side
Seam
Pockets

8-inch
(Youth
Inseam
Graded)



WHISK 2.0 SHORTS

229511 Adult S-3XL
229611 Youth S-XL
in select colors

- 100% polyester wicking knit with color secure® technology that helps prevent dye migration
- Tagless label
- 2-inch brushed back elastic waistband with inside drawcord
- Side vents



BLACK
080

GRAPHITE
059

NAVY
065

SILVER
099



FOREST
038

MAROON
745

ROYAL
060

SCARLET
083



Side
Seam
Pockets

10-inch
(7-inch on
Youth)



DRI-POWER® ESSENTIAL PERFORMANCE SHORTS WITH POCKETS

TS7X2M Adult S-3XL

TS7X2B Youth S-XL

- 4.0 ounce, 100% polyester interlock
- Dri-Power® Moisture Wicking Technology
- Elastic waistband with inside drawcord on Adult



TRUE RED
TRR

STEALTH
SHL

ROYAL
ROY

PURPLE
PUR

NAVY
NAV



DARK GREEN
DGR

BLACK
BLK

ROCK
BFJ

CARDINAL
CDR

MAROON
MAR

Available in Adult only



Side
Seam
Pockets

9-inch
(Youth
Inseam
Graded)



TRAINING SHORTS WITH POCKETS

1428 Adult S-3XL

1429 Youth S-L

- 100% polyester wicking knit
- Full-cut
- Tagless label
- Covered elastic waistband with inside drawcord



BLACK
080

ROYAL
060

NAVY
065

GRAPHITE
059

RED
040

SILVER GREY
016

Available in Adult only



Side
Seam
Pockets

8-inch
Inseam



BASIC COTTON POCKET SHORTS

25843M Adult S-4XL

- 6.8 ounce
- Colors: 100% cotton,
- Black Heather: 50% cotton/50% polyester
- Oxford: 53% polyester/47% cotton
- Covered waistband with inside elastic drawcord



NAVY
YPI

OXFORD
OXF

BLACK HEATHER
CD1

BLACK
BLK

DRI-POWER® MESH SHORTS

659AFM Adult S-4XL

659AFB Youth S-XL

- 4.1 ounce, 100% polyester mesh
- Fully lined
- Dri-Power® Moisture Wicking Technology
- Covered waistband with inside elastic drawcord



BLACK
BLK

BURNT
ORANGE
BOR

CARDINAL
CRD

DARK
GREEN
DGR

GRIDIRON
SILVER
GSV

MAROON
MAR

NAVY
NAV

PURPLE
PUR

9-inch
(7-inch
on Youth)



Available in
Adult Only

Available in
Adult S-2XL



ROYAL
ROY

TRUE RED
TRR



COLUMBIA
BLUE
CBU

GOLD
GLD



WHITE
WHI



Side
Seam
Pockets

9-inch
Inseam

MESH SHORTS WITH POCKETS

651AFM Adult S-3XL

- 2.8 ounce 100% polyester
- Fully lined
- Dri-Power® Moisture Wicking Technology
- Covered waistband with inside elastic drawcord



TRUE RED
TRR

ROYAL
ROY

NAVY
NAV

MAROON
MAR

DARK
GREEN
DGR



BURNT
ORANGE
BOR

BLACK
BLK

WHITE
WHI

STEEL
STE

STEALTH
SHL



7-inch
(Youth
Inseam
Graded)



WICKING MESH ATHLETIC SHORTS

805 Adult S-3XL

806 Youth S-L

- 100% polyester wicking mesh
- Full-cut
- Covered elastic waistband with inside drawcord
- Tagless label



BLACK
080

RED
040

ROYAL
060

NAVY
065

DARK
GREEN
035



7-inch
(Youth
Inseam
Graded)



MODIFIED MESH SHORTS

1850 Adult S-4XL
1851 Youth XXS-XL

- 100% polyester sports mesh with color secure® technology that helps prevent dye migration
- 100% polyester wicking knit lining with color secure® technology
- Tagless label
- Covered elastic waistband with inside drawcord



BLACK 080 COLUMBIA BLUE 089 DARK GREEN 035 GOLD 025 GRAPHITE 059 KELLY 030 MAROON 745



NAVY 065 ORANGE 029 PURPLE 747 ROYAL 060 SCARLET 083 SILVER 099



ATTAIN COLLECTION



7-inch
(Youth
Inseam
Graded)



ATTAIN SHORTS

2780 Adult S-3XL
2781 Youth XS-L

- 100% polyester wicking knit with color secure® technology that helps prevent dye migration
- Tagless label
- Covered elastic waistband with inside drawcord



BLACK 080 GRAPHITE 059 NAVY 065 RED 040 ROYAL 060

Available in
Adult Only



1420

9-inch
(Youth
Inseam
Graded)

1425

7-inch
(Youth
Inseam
Graded)TRAINING SHORTS
& OCTANE SHORTS

1420	Adult	S-3XL
1421	Youth	S-L
1425	Adult	S-3XL
1426	Youth	XXS-L

- 100% polyester wicking knit
- Full-cut
- Tagless label
- Covered elastic waistband with inside drawcord



BLACK 080 RED 040 ROYAL 060 NAVY 065 ORANGE 029 GOLD 025 KELLY 030

Not available in 1421



SILVER GREY 016 GRAPHITE 059 COLUMBIA BLUE 089 MAROON * 045 PURPLE * 050 KELLY 030



LADIES OCTANE SHORTS

1423	Ladies	S-2XL
-------------	--------	-------

- 100% polyester wicking knit
- Tagless label
- Covered elastic waistband with inside drawcord



BLACK 080 DARK GREEN 035 GRAPHITE 059 MAROON * 045



NAVY 065 RED 040 ROYAL 060 SILVER 099

7-inch
Inseam

*Maroon shades can vary by brand, please contact our Customer Care with questions



Center back valuables pocket with zippered closure

4-inch inseam (Girls Inseam Graded)



LADIES OLYMPUS SHORTS

229389 Ladies XS-2XL
229489 Girls S-L

- Shell is 90% polyester/10% spandex
- Lining is 100% polyester wicking crepe
- Liner wicks moisture
- Tagless label
- Low rise, covered elastic waistband with inside drawcord
- Inside key pocket
- Inner brief with leg elastic

Available in Ladies Only



BLACK/WHITE 420 DUSTY LAVENDER/WHITE 59E GRAPHITE/WHITE R04 NAVY/WHITE 301 ROYAL/WHITE 280 SCARLET/WHITE 408 AQUA/WHITE Y06 DARK GREEN/WHITE 438 MAROON/WHITE 380 ORANGE/WHITE 320



Mesh Back Yoke

3 1/2-inch Inseam (Girls Inseam Graded)



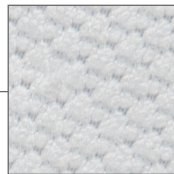
LADIES WAYFARER SHORTS

2430 Ladies XS-2XL
2431 Girls S-L

- Shell is 100% polyester micropoly
- Inserts are 100% polyester mesh
- Lining is 100% polyester wicking crepe
- Liner wicks moisture
- Low rise, covered elastic waistband with inside drawcord
- Inner brief with leg elastic
- Inside key pocket
- Heat sealed label



AQUA Y07 BLACK 080 CORAL 043 GRAPHITE 059 LIGHT LAVENDER 868 NAVY 065 POWER PINK 809 RED 040 ROYAL 060



Mesh Insert



4-inch Inseam (Girls Inseam Graded)



LADIES PULSE TEAM SHORTS

1265 Ladies S-2XL
1266 Girls S-L

- Shell is 100% polyester micropoly
- Inserts are 100% polyester mesh
- Lining is 100% polyester wicking crepe
- Liner wicks moisture
- Low rise, covered elastic waistband with inside drawcord
- Inner brief with leg elastic
- Inside key pocket

Available in Ladies only



BLACK/BLACK/WHITE 529 BLACK/WHITE/POWER YELLOW 480 RED/WHITE/BLACK 133 ROYAL/WHITE/BLACK 150 NAVY/WHITE/BLACK 163 ORANGE/WHITE/BLACK 651 MAROON/WHITE/BLACK 162 PURPLE/WHITE/BLACK 119 DARK GREEN/WHITE/BLACK 608 POWER PINK/WHITE/BLACK 455 POWER YELLOW/WHITE/BLACK 459



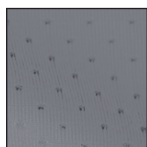
LADIES WICKING MESH SHORTS

960 Ladies S-2XL
961 Girls S-L

- 100% polyester wicking mesh
- Covered elastic waistband with inside drawcord



5-inch
(Girls
Inseam
Graded)



Pinhole Mesh



5-inch
(Girls
Inseam
Graded)



LADIES INFERNO SHORTS

1292 Ladies S-2XL
1293 Girls S-L

- 92% polyester/8% spandex wicking pinhole mesh
- Tagless label
- Covered elastic waistband with inside drawcord



3-inch
(Girls
Inseam
Graded)



LADIES JERSEY SHORTS

987 Ladies XS-XL
2XL in select colors
988 Girls XS-L

- Heavyweight 50% polyester/50% cotton jersey knit
- Elastic waistband
- V-notch leg





LADIES ACTION COLOR BLOCK SKORT

2410 Ladies S-2XL

2411 Girls S-L

- Lightweight 90% polyester/ 10% spandex knit skirt
- Heavyweight 90% polyester/ 10% spandex knit inner short
- Tagless label
- Low rise, wide flat waistband for secure fit and comfort
- Hidden possession pocket in waistband
- Flatlock stitching provides comfort and helps prevent chafing

Available in
Ladies only



Graphite Inner Short



LADIES FEMFIT SKORT

2420 Ladies XS-2XL

2421 Girls S-L

- Lightweight 90% polyester/ 10% spandex knit skirt
- Graphite Heavyweight 90% polyester/ 10% spandex knit inner short
- 94% polyester/6% spandex maze mesh yoke
- Tagless label
- Low rise, wide flat waistband for secure fit and comfort
- Hidden possession pocket in waistband
- Flatlock stitching provides comfort and helps prevent chafing
- Longer length at back of skort for added coverage

Available in Ladies only

