



AUGUSTA
— *Outdoors* —



A CURATED COLLECTION FOR THE OUTDOOR ENTHUSIAST





A New Outdoor Partner

We're proud to offer our Augusta Sportswear Brands, Outdoor Collection to customers like you that are passionate about the outdoors. We've been in the apparel business since 1947 and we're confident you'll like what you see from brands like Russell Athletic®, Pacific Headwear™, Holloway® and Augusta Sportswear®. We offer a broad selection of custom branding capabilities designed to help your business stand out. Complete your head-to-toe look with embroidery, heat transfer, silicon, leather patches and more with industry leading turn times. We even offer same day shipping on our blank goods.

Visit augustasportswear.com to view our full line of products.

Set-up your wholesale account today with our quick and easy on-line registration and let us be your new outdoor partner.

Call/email us with any questions.
800-237-6695 /

sales@augustasportswear.com
or to locate your Augusta
Sportswear Brands Sales Rep

©2020 Augusta Sportswear, Inc.





ICON KEY

-  **Dry-Excel™**
Moisture evaporation and wicking fabric
-  **Water Resistant**
Resists rain & water to keep the body protected & dry
-  **true hue technology®**
true hue technology® helps prevent dye migration
-  **Moisture Management**
Fabric wicks moisture away keeping the body cool & dry
-  **4-Way Stretch**
Stretch properties allow for increased mobility
-  **Odor Resistant**
Odor Resistant technology keeps garments fresher longer
-  **UPF**
Garment protects against harmful UV rays

PRODUCT CATEGORIES

OUTERWEAR	6
FLEECE.....	26
LIFESTYLE.....	32
POLOS	48
HEADWEAR	54
ACCESSORIES	70
BAGS	78
DECORATION	83

Printed on Rolland EnviroPrint 100% Recycled Paper.
This paper contains 100% post-consumer fiber, is
manufactured using renewable energy -
Biogas and processed chlorine free.
It is FSC® and Ancient Forest Friendly™ certified.



REPREVE®

Products are made with 100%
post-consumer recycled plastic bottles.



Check out the
Repreve collection
on pg. 6



KEEP AMERICA
BEAUTIFUL



AMERICA RECYCLES DAY®

A KEEP AMERICA BEAUTIFUL® PROGRAM

NOVEMBER 15, 2020

America Recycles Day (ARD), a Keep America Beautiful® program, is dedicated to promoting, encouraging, and celebrating recycling. More than a day, ARD is an opportunity to inform and inspire family, friends, neighbors, classmates, and colleagues across the country to recycle.

Augusta Sportswear Brands is proud to be an official partner and supporter of **Keep America Beautiful** and **America Recycles Day!**

To learn more, visit www.kab.org.

RECYCLE





REPREVE®
COLLECTION



104C
pg. 65

229516

229716



Warmth **5** / 10

Weight **Light**

NEW REPREE® ECO JACKET

229516 Adult XS-3XL MSRP 69.00

229716 Ladies XS-3XL MSRP 69.00

- 100% polyester MicroTec woven face with durable water-repellent finish to keep you dry
- Made from Repreve® recycled polyester quilting
- Weld engineered quilting that's decoration friendly
- 78% polyester/22% spandex inserts, peached for softness
- Ladies' fit on 229716
- Media port inside zippered valuables pocket
- Front zippered pockets
- Half-elastic cuffs
- Dropped tail



BLACK
080

CARBON
J96

NAVY
065

OLIVE
039

STORM
932

TUNDRA HAZE
PRINT
20M



V57

229713



Warmth **5** / 10

Weight **Light**

NEW LADIES REPREE® ECO VEST

229713 Ladies XS-3XL MSRP 62.00

- 100% polyester MicroTec woven face with durable water-repellent finish to keep you dry
- Made from Repreve® recycled polyester quilting
- Weld engineered quilting that's decoration friendly
- Media port inside zippered valuables pocket
- Side seam pockets
- Side seam pockets
- Dropped tail



BLACK
080

CARBON
196

NAVY
065

OLIVE
039



STORM
932

TUNDRA HAZE
PRINT
20M

WHITE
005

REPREEVE®

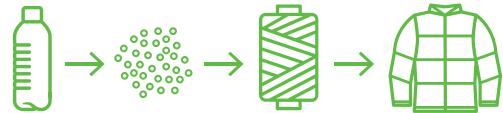
Products are made with 100% post-consumer recycled plastic bottles.



YOU'RE WEARING RECYCLED BOTTLES

Each of our Repreve® partnered garments features soft, sustainable fabric technology.

6 bottles in style **229713**, **7 bottles** in style **229716**, and **8 bottles** in style **229516**.



Welded
Quilting



KEEP AMERICA
BEAUTIFUL

PROUD PARTNERS

Keep America Beautiful® envisions a country in which every community is a clean, green, and beautiful place to live.

Join the movement, and let's make community beauty our lasting signature.

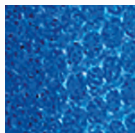
To learn more, visit www.kab.org.



BIONIC COLLECTION



Embossed Pattern



Adjustable Quilted Hood

Two-Way Front Zipper

Elasticized Hook & Loop Fastener Cuffs

Half-Elastic Cuffs

Warmth **7** / 10

Weight **Mid**

BIONIC HOODED JACKET



229017 Adult S-3XL MSRP 60.80

229217 Youth S-XL MSRP 57.80

- Micron™ polyester lightweight, wind/water resistant fabric
- Embossed Micron blocking at hood, shoulders, & top sleeves with the Screenmesh pattern
- Quilted, polyester, taffeta lining
- Adjustable quilted hood with eyelets & concealed cord locks (on Adult only)
- Interior decoration zipper
- Inside zippered pocket
- Dual front zippered pockets
- Coordinating pants: 229095, 229395

Available in Adult Only



BLACK/
CARBON
D86

CARBON/
BLACK
E84

MAROON/
CARBON
E92

NAVY/
CARBON
E81

ROYAL/
CARBON
E86

SCARLET/
CARBON
E90

DK GREEN/
CARBON
C84

Warmth **9** / 10

Weight **Heavy**

CONQUEST JACKET



229162 Adult S-3XL MSRP 119.80

- Duraweav™ fabric has a smooth nylon surface
- Anti-pill microfleece and quilted nylon lining
- Adjustable 3-piece hood with eyelets and concealed cord locks
- Knee length
- Set-in sleeves
- Front right chest media pocket with inside hidden cord port
- Front pockets with microfleece lining



BLACK
D80

NAVY
D65

ROYAL
D60

SCARLET
D83



Quarter Zip
Pullover Style



Adjustable Vent For
Decoration Access

Warmth **4** / 10

Weight **Light**

WIZARD PULLOVER



229016	Adult	S-3XL	MSRP 61.00
229216	Youth	S-XL	MSRP 58.00

- Micron™ polyester is a lightweight, wind/water resistant fabric
- Micromesh lined nylon body & hood
- Adjustable mesh lined hood with eyelets and concealed cord locks
- Front zippered pockets
- Half-elastic cuffs
- Open bottom with adjustable elastic hidden drawcord

Available in
Adult Only



BLACK/
LIGHT
GOLD
R16

BLACK/
ORANGE
423

BLACK/
SCARLET
500

BLACK/
WHITE
420

MAROON/
WHITE
380

NAVY/
LIGHT
GOLD
S28

NAVY/
WHITE
301

ROYAL/
WHITE
280

SCARLET/
WHITE
408

CARBON/
WHITE
F52

DARK
GREEN/
WHITE
438

Dropped Tail

Warmth **4** / 10

Weight **Light**

SABLE PANT



229095	Adult	XS-3XL	MSRP 46.20
229395	Ladies	XS-2XL	MSRP 46.20

- Micron™ lightweight polyester shell
- Mesh (UPPER LEG) and nylon lining (LOWER LEG)
- Ladies' fit on style 229395
- Covered elastic waistband with inside drawcord
- Front pockets
- Back pockets with zipper
- Zipper on outside lower leg and bottom snaps

Available in Adult Only



BLACK/
ORANGE
423

BLACK/
SCARLET
500

BLACK/
WHITE
420

NAVY/
WHITE
301

ROYAL/
WHITE
280

SCARLET/
WHITE
408

DK GREEN/
WHITE
438

MAROON/
WHITE
380

BLACK/
BLACK
425

CARBON/
CARBON
D87

NAVY/
NAVY
S14



STORM FENDI



INVERT COLLECTION



Ladies Fit

Warmth **7** / 10

Weight **Mid**

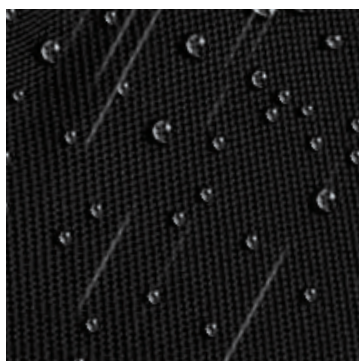
INVERT 1/2 ZIP PULLOVER



229536 Adult XS-3XL MSRP 78.20

229736 Ladies XS-2XL MSRP 78.20

- Sweater knit bonded to microfleece lining for maximum warmth
- Wik-Sof™ Dry-Excel™ performance fleece inserts
- Stretch woven zipper garage and storm flap
- Set-In sleeves



Water repellent finish keeps you dry, breathable knit softshell keeps you comfortable.



BLACK
080

CARBON
J96

NAVY
065

ROYAL
060

SCARLET
083

Warmth **7** / 10

Weight **Mid**

INVERT JACKET



229540 Adult XS-3XL MSRP 85.60

- Sweater knit bonded to microfleece lining for maximum warmth
- Stretch woven zipper garage and storm flap
- Set-in sleeves
- Front zippered pockets
- Dual inside pockets



BLACK/
CARBON
D86

BLACK/
WHITE
420

CARBON/
WHITE
F52

NAVY/
WHITE
301

ROYAL/
WHITE
280

SCARLET/
WHITE
408

Reflective
Zipper Pull



Zippered
Pocket

Ladies Fit

Warmth **6** / 10

Weight **Mid**

DEVIATE PULLOVER



229541 Adult XS-3XL MSRP 75.60
229741 Ladies XS-2XL MSRP 75.60

- Dry-Excel™ bonded polyester is a scuba bonded fabric featuring a tonal striation
- Poly/spandex storm cuffs for weather protection
- Raglan sleeves
- Front zippered pockets
- Zipper garage and storm flap

Only Available
in Adult



BLACK
080

CARBON
J96

NAVY
065

ROYAL
060

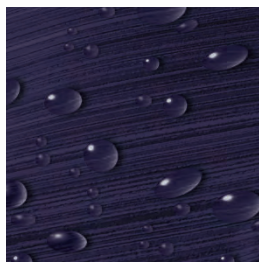
SCARLET
083

WHITE
005

FOREST
038

MAROON
045

Water repellent finish keeps you
dry, breathable knit softshell
keeps you comfortable.





Warmth **6 / 10** Weight **Mid**

DEVIATE JACKET



229539 Adult XS-3XL MSRP 82.80
229739 Ladies XS-2XL MSRP 82.80
 in select colors

- Dry-Excel™ bonded polyester is a scuba bonded fabric featuring a tonal striation
- Poly/spandex storm cuffs
- Storm flap and zipper garage
- Raglan sleeves
- Front zippered pockets
- Dual inside pockets



White Print
option detail



Ladies Fit

Warmth **6** / 10 Weight **Mid**

SOF-STRETCH PULLOVER



229538 Adult XS-3XL MSRP 62.00
229738 Ladies XS-2XL MSRP 62.00

- 100% polyester Sof-Stretch knit bonded to microfleece for warmth
- Spandex bound collar
- Set-in sleeves
- Front zippered pockets
- Half-elastic cuffs
- Dropped tail bottom with side vents



BLACK/
SCARLET
500

BLACK/
CARBON
D86

GRAPHITE/
CARBON
E95

NAVY/
CARBON
E81

ROYAL/
CARBON
E86

SCARLET/
CARBON
E90

FOREST/
CARBON
E79

MAROON/
CARBON
E92

WHITEPRINT/
CARBON
29E



TECHNOLOGY



229737



229537

Warmth **6** / 10

Weight **Mid**

SOFT-STRETCH JACKET



229537	Adult	XS-3XL	MSRP 67.00
229737	Ladies	XS-2XL	MSRP 67.00

- 100% polyester Sof-Stretch knit with microfleece for warmth
- Ladies' fit on style 229737
- 3-piece hood with spandex binding
- Set-in sleeves
- Front zippered pockets
- Half-elastic cuffs
- Dropped tail bottom with side vents



BLACK/
SCARLET
500

BLACK/
CARBON
D86

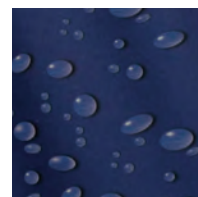
NAVY/
CARBON
E81

ROYAL/
CARBON
E86

SCARLET/
CARBON
E90

GRAPHITE/
CARBON
E95

WHITEPRINT/
CARBON
Z9E



Durable water repellent finish keeps you dry while knit softshell breathes to keep you comfortable.

222552

229554

RANGE HOODIE



222552 Adult
S-3XL MSRP 47.20
222652 Youth
S-XL MSRP 44.20
in select colors

- Dry-Excel™ 5.9 ounce 100% polyester performance wicking fleece features tonal tech weave print on hood, sleeves and pocket
- Pattern is roller printed, making it decoration friendly
- Tagless label
- Pinhole mesh lined hood with thick drawcord and metal eyelets (on Adult only)
- Set-in sleeves
- Front pouch pocket



Available in Youth

FOREST
038

MAROON
045

ROYAL
060

SCARLET
083

BLACK
080

NAVY
065

WHITE
005



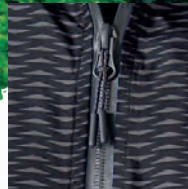
222552



229542



229554



Reflective Zipper Pull & Matte Tips

Jacket folds up into zippered front pocket

Warmth **7** / 10

Weight **Mid**

RANGE JACKET



229542 Adult
S-3XL MSRP 73.40
229642 Youth
S-XL MSRP 70.40
in select colors

- Tech weave printed Micron™ lightweight polyester
- Omni-Sof™ microfleece lined
- Taffeta lined sleeves
- Shiny coated front zipper
- Adjustable 3-piece hood with eyelets and concealed cord locks on Adult sizes only (elastic on youth)
- Raglan sleeves
- Interior decoration zipper
- Inside zippered valuables pocket
- Half-elastic cuffs
- Open bottom with adjustable elastic hidden drawcord on Adult sizes only

Available in Youth



CARBON J96 NAVY/CARBON E81 FOREST/CARBON E79 MAROON/CARBON E92 ORANGE 029 ROYAL/CARBON E86 SCARLET/CARBON E90 SCARLET 083 WHITE/CARBON E94

Warmth **4** / 10

Weight **Light**

RANGE PACKABLE PULLOVER



229554 Adult
S-3XL MSRP 41.80
4XL in select colors
229654 Youth
S-XL MSRP 38.80
Select Colors

- Tech weave printed Micron™ lightweight polyester, wind/water resistant fabric
- Adjustable 3 piece hood with eyelets and concealed cord locks on Adult only (elastic on youth)
- Raglan sleeves
- Half-elastic cuffs
- Adjustable bottom hem with hidden shockcord closure on right side of pocket (on Adult only)

Available in Youth
Available in Adult 4XL



ROYAL 060 SCARLET 083 FOREST 038 MAROON 045 BLACK 080 NAVY 065 WHITE 005

Welded Silicone Accent

Dual Front Zipper on Ladies

Ladies Fit

Ladies Fit

Warmth **6** / 10

Weight **Mid**

3D REGULATE SOFT SHELL JACKET



229592 Adult S-3XL MSRP 92.00

229792 Ladies XS-2XL MSRP 92.00

3XL in select color

- 3D Regulate Soft Shell outer fabric in 96% polyester/4% spandex, 4-way stretch bonded to 100% polyester, 3D Waffle textured brushed back for breathable warmth
- Inside 3D Regulate Soft Shell fabric rolls over to the front of collar for softness and comfort
- Zipper garage with partial storm flap
- Set-in sleeves
- Front zippered pockets
- Dual inside pockets
- Internal storm cuffs for complete weather protection
- Open bottom with adjustable elastic hidden drawcord



Warmth **4** / 10

Weight **Light**

3D REGULATE LIGHTWEIGHT PULLOVER



222553 Adult XS-3XL MSRP 59.40

4XL in select colors

- 3D Regulate lightweight knit, 94% polyester/6% spandex tonal heathered brushed Waffle textured back for controlled warmth
- 3D Regulate knit fabric rolls over to the front of collar for softness and comfort
- Raglan sleeves
- 100% lightweight matte woven polyester zippered valuables pocket on wearers right side

222753 Ladies XS-2XL MSRP 59.40

3XL in select colors

- 3D Regulate knit fabric rolls over to the front of crossover hood for softness and comfort
- 100% lightweight matte woven polyester thumbholes
- Contoured bottom





Media Port Pocket for Interior Ear Bud Cord



Ladies Thumbholes

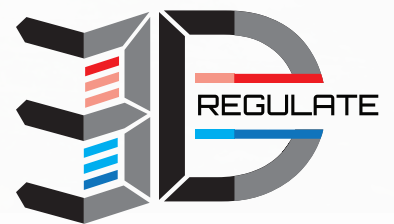
Reflective Zipper Garage

222553

222753

221398

229559



COLLECTION

CONTROL YOUR COMFORT



RAIDER
COLLECTION

Raider Print
Pattern on sleeves
and hood

Dual Front Chest
Zippered Pocket

Dual Front Chest
Zippered Pocket

Ladies Fit

Dual Zippered
Pockets

Dual Zippered
Pockets

Warmth **6 / 10** Weight **Mid**

RAIDER SOFT SHELL JACKET



229157 Adult S-3XL MSRP 80.20
4XL in select colors

229357 Ladies XS-2XL MSRP 80.20
3XL in select colors

- Lightweight, softshell outer fabric in 96% polyester, 4% spandex bonded to brushed back polyester
- Adjustable hood with drawcord (not available on Ladies' XS)
- Internal storm cuffs for weather protection
- Open bottom with adjustable elastic hidden drawcord

Available in Adult 4XL Available in Ladies 3XL Available in Adult Only



CARBON
PRINT/
BLACK
H05

CARBON
PRINT/
NAVY
H03

CARBON
PRINT/
BLACK
H05

CARBON
PRINT/
WHITE
H04

CARBON
PRINT/
FOREST
H69

CARBON
PRINT/
PURPLE
H68

CARBON
PRINT/
MAROON
H06

CARBON
PRINT/
ORANGE
H07

CARBON
PRINT/
ROYAL
H02

CARBON
PRINT/
SCARLET
H01



Warmth **2** / 10 Weight **Ultra Light**

RAIDER PULLOVER SHORT SLEEVE

229545 Adult S-3XL MSRP 53.00
4XL in select colors

- Ultra-lightweight Aero-Tec™ fabric provides both weather protection and zero noise, without the bulk
- Tech print pattern detail on neck and sleeves
- Set-in sleeves

Warmth **2** / 10 Weight **Ultra Light**

RAIDER PULLOVER

229155 Adult XS-3XL MSRP 57.60
4XL in select colors

229655 Youth S-L MSRP 54.60
Select Colors

- Ultra-lightweight Aero-Tec™ fabric provides both weather protection and zero noise, without the bulk
- Set-in sleeves

Available in Adult 4XL



CARBON PRINT/BLACK H05 CARBON PRINT/NAVY H03 CARBON PRINT/ROYAL H02 CARBON PRINT/SCARLET H01 CARBON PRINT/WHITE H04 CARBON PRINT/FOREST H69 CARBON PRINT/GRAPHITE H60 CARBON PRINT/MAROON H06 CARBON PRINT/ORANGE H07 CARBON PRINT/PURPLE H68

Available in Adult 4XL & Youth

Available in Adult Only



CARBON PRINT/BLACK H05 CARBON PRINT/GRAPHITE H60 CARBON PRINT/NAVY H03 CARBON PRINT/ROYAL H02 CARBON PRINT/SCARLET H01 CARBON PRINT/FOREST H69 CARBON PRINT/MAROON H06 CARBON PRINT/ORANGE H07 CARBON PRINT/PURPLE H68 CARBON PRINT/WHITE H04

Reflective Accent
Around Zipper

Side
Pockets



Warmth **4** / 10

Weight **Light**

WELD HYBRID PULLOVER



229596 Adult S-3XL MSRP 61.00
4XL in select colors

229696 Youth S-XL MSRP 58.00

- 90% polyester/10% spandex, 4-way stretch woven fabric front panel and back yoke
- Flex-Sof™ smooth, lightweight, polyester knit with superior abrasion-resistance & high mechanical stretch on lower body, sleeves and back
- Low profile collar
- Set-in sleeves
- Spandex bound cuff

Available in Adult 4XL & Youth



Warmth **3** / 10

Weight **Light**

WELD JOGGERS



229559 Adult XS-3XL MSRP 50.80

229799 Ladies XS-2XL MSRP 48.60

- 90% polyester/10% spandex
- Covered elastic waistband with outside drawcord and silicone dipped tips (inside drawcord on XS-S)
- Front and back pockets
- Tapered leg
- Zipper on outside lower leg
- Articulated seaming at the knees



NEW WELD SHORTS



229556 Adult S-4XL MSRP 26.00

- 90% polyester/10% spandex
- Dry-Excel™ 100% polyester pinhole micromesh inseam gusset
- Tagless label
- Covered elastic waistband with inside drawcord
- Side seam pockets
- 8.5-inch inseam



Back Zippered Pocket







650K
pg. 69



WILLOW, FLORIDA
Willow
EST. 1990
RIVERKEEPER



KEEP AMERICA
BEAUTIFUL

PROUD PARTNERS

Keep America Beautiful® envisions a country in which every community is a clean, green, and beautiful place to live.

Join the movement, and let's make community beauty our lasting signature.

To learn more, visit www.kab.org.



Warmth **4** / 10

Weight **Light**



MICRO POLY WINDSHIRT/LINED

3415 Adult
S-4XL MSRP 24.00

- Outer shell of 100% micro polyester
- Lined with 100% polyester taffeta
- Rib-knit V-neck collar, cuffs and bottom band
- Set-in sleeves
- Side seam pockets



BLACK
080

RED
040

ROYAL
060

NAVY
065



Warmth **5** / 10

Weight **Light**



HOODED COACH'S JACKET

3102 Adult
S-3XL MSRP 29.40

- Outer shell of 100% nylon taffeta
- Lined with 100% polyester brushed tricot
- Tear away label
- Hood with drawcord
- Raglan sleeves
- Front pockets
- Elastic cuffs



GOLD
025

BLACK
080

DARK
GREEN
035

MAROON
045

NAVY
065

RED
040

ROYAL
060

WHITE
005



**FREESTYLE SUBLIMATED
FLEECE HOODIE**



228141	Adult	S-5XL	MSRP 79.00
228241	Youth	S-XL	MSRP 77.00

- Dry-Excel™ 5.9 ounce 100% polyester performance wicking fleece and brushed back for added warmth
- Tagless label
- Hood with pinhole mesh lining
- Set-in sleeves
- Front pouch pocket
- Self-fabric cuffs and bottom band
- Coordinating pants 5515/5516, 229171, 5566/5568

Gradient
Design

5+ DESIGNS AVAILABLE



Athletic Vintage
Design




Horizon
Design





CORE

color choice

WICKING FLEECE HOODIE 

5505	Adult	S-5XL	MSRP 34.00
5506	Youth	S-L	MSRP 33.00

- 5.9 ounce 100% polyester performance wicking fleece
- Tear away label
- Drawcord on Adult sizes
- Set-in sleeves
- Front pouch pocket
- Coordinating pants 5515/5516, 229171, 5566/5568





NEW 80/20 FLEECE HOODIE

820NSM Adult S-3XL MSRP 36.00

- 8.5 ounce, 80% cotton/20% polyester
- Three-end fleece with combed ringspun face
- Jersey lined hood with flat braid drawcord
- V stitching at neckline
- Set-in sleeves
- Front pouch pocket
- Rib-knit cuffs and bottom band
- Coordinating pant 82ANSN



ASH
951

BLACK
BLK

CHARCOAL GREY
HEATHER
A71

MEDIUM GREY
HEATHER
A7J

NAVY
NAV

ROYAL
ROY

TRUE RED
TRR



**FREESTYLE SUBLIMATED
FLEECE 1/4 ZIP**



228142	Adult	S-3XL	MSRP 74.00
228242	Youth	S-XL	MSRP 72.00

- Dry-Excel™ 5.9 ounce 100% polyester performance wicking fleece and brushed back for added warmth
- Tagless label
- Set-in sleeves
- Open bottom
- Coordinating pants 5515/5516, 229171, 5566/5568

Boomerang
Design

5+ DESIGNS AVAILABLE

CUSTOM APPAREL IN 5 EASY STEPS

Try FreeStyle today at augustasportswear.com



All Over Design



Digit Design



110C
pg. 64



82RNSM



82ANSM



DRI-POWER® FLEECE CREW SWEATSHIRT



698HBM Adult S-3XL MSRP 20.00
4XL in select colors

998HBB Youth S-XL MSRP 16.00

- 9.3 ounce
- Colors: 50% cotton/50% polyester, Oxford: 52% polyester/48% cotton
- Dri-Power® Moisture Wicking Technology
- Crew neck with V stitching at neckline
- Set-in sleeves
- Rib-knit cuffs and bottom band
- Coordinating pant 029HBM, 596HBM/596HBB, 696HBM



80/20 FLEECE CREW

82RNSM Adult S-3XL MSRP 30.00

- 8.5 ounce, 80% cotton/20% polyester
- Three-end fleece with combed ring spun face
- V stitching at neckline
- Set-in sleeves
- Rib-knit cuffs and bottom band



80/20 OPEN BOTTOM SWEATPANT

82ANSM Adult S-3XL MSRP 30.00

- 8.5 ounce, 80% cotton/20% polyester
- Three-end fleece with combed ring spun face
- Covered elastic waistband with inside drawcord
- Side seam pockets
- Open bottom





229775

229575



SOPHOMORE PULLOVER

229575 Adult XS-3XL MSRP 41.00

- 7.8 ounce, 50% polyester/50% cotton french terry knit with vintage heathered look for worn-in feel
- Exterior woven logo loop label
- Three-button placket with vintage brass colored buttons
- Set-in sleeves



ATHLETIC
HEATHER
018

STORM
HEATHER
72N

VINTAGE BIRCH
HEATHER
75N

MAROON
HEATHER
T09

SCARLET
HEATHER
T20



NAVY
HEATHER
U22

BLACK
HEATHER
U36

FOREST
HEATHER
U41

ROYAL
HEATHER
U55

LADIES SOPHOMORE PULLOVER

229775 Ladies XS-3XL MSRP 41.00

- 7.8 ounce, 50% polyester/50% cotton french terry knit with vintage heathered look for worn-in feel
- Fits loose to body
- Exterior woven logo loop label
- Natural twill accents at neck and placket
- Dropped shoulder sleeves for mobility and comfort
- Contoured bottom



ATHLETIC
HEATHER
018

STORM
HEATHER
72N

DUSTY ROSE
HEATHER
73N

VINTAGE BIRCH
HEATHER
75N

MAROON
HEATHER
T09

PURPLE
HEATHER
U86



SCARLET
HEATHER
T20

NAVY
HEATHER
U22

BLACK
HEATHER
U36

FOREST
HEATHER
U41

ROYAL
HEATHER
U55



Ladies Fit

ECHO LONG SLEEVE HOODIE



222539 Adult S-3XL MSRP 35.40
222639 Youth S-XL MSRP 34.20

- Dry-Excel™ heather fabric is performance polyester knit with high mechanical stretch and snag resistant technology
- Dry-Excel™ wicking knit sleeves and hood
- Tagless label
- 3-piece hood
- Raglan Sleeves



GRAPHITE HEATHER/BLACK X40
 GRAPHITE HEATHER/FOREST L93
 GRAPHITE HEATHER/KELLY L95
 GRAPHITE HEATHER/LIGHT GOLD L94
 GRAPHITE HEATHER/MAROON X86
 GRAPHITE HEATHER/NAVY X47



GRAPHITE HEATHER/ORANGE X43
 GRAPHITE HEATHER/PURPLE X87
 GRAPHITE HEATHER/ROYAL X49
 GRAPHITE HEATHER/SCARLET L92
 GRAPHITE HEATHER/WHITE L97

LADIES ECHO HOODIE



222739 Ladies XS-2XL MSRP 35.40

- Dry-Excel™ heather fabric is performance polyester knit with high mechanical stretch and snag resistant technology
- Dry-Excel™ wicking knit sleeves and hood
- Tagless label
- Scuba shaped hood with drawcord on S-2XL
- Front seam with hidden valuables pocket
- Raglan sleeves with thumbholes



GRAPHITE HEATHER/BLACK X40
 GRAPHITE HEATHER/FOREST L93
 GRAPHITE HEATHER/KELLY L95
 GRAPHITE HEATHER/LIGHT GOLD L94
 GRAPHITE HEATHER/MAROON X86
 GRAPHITE HEATHER/NAVY X47



GRAPHITE HEATHER/POWER PINK X45
 GRAPHITE HEATHER/PURPLE X87
 GRAPHITE HEATHER/ORANGE X43
 GRAPHITE HEATHER/ROYAL X49
 GRAPHITE HEATHER/SCARLET L92
 GRAPHITE HEATHER/WHITE L97



ECHO SHORT SLEEVE HOODIE



222545 Adult XS-3XL MSRP 32.80

- Dry-Excel™ wicking knit body with Dry-Excel™ heather fabric sleeves in performance polyester knit with high mechanical stretch and snag resistant technology
- Tagless label
- 3-piece hood
- Raglan Sleeves



BLACK/
GRAPHITE
HEATHER
R27

FOREST/
GRAPHITE
HEATHER
L68

MAROON/
GRAPHITE
HEATHER
W39

NAVY/
GRAPHITE
HEATHER
S22



PURPLE/
GRAPHITE
HEATHER
X38

ROYAL/
GRAPHITE
HEATHER
S66

SCARLET/
GRAPHITE
HEATHER
T23

WHITE/
GRAPHITE
HEATHER
L91



M08
pg. 54





Ladies Fit

JOURNEY HOODIE



229585 Adult XS-3XL MSRP 33.40

- 4.1 ounce 75% polyester/25% cotton heather knit with soft cotton hand feel
- Tagless label
- Exterior woven logo loop label
- Hood with white drawcord on S-3XL only
- Front kangaroo pocket with DTM three-needle stitching
- Set-in sleeves

LADIES JOURNEY HOODIE



229785 Ladies XS-2XL MSRP 33.40

- 4.1 ounce 75% polyester/25% cotton heather knit with soft cotton hand feel
- Tagless label
- Exterior woven logo loop label
- Front kangaroo pocket with DTM three-needle stitching
- Set-in sleeves



ESSENTIAL HOODIE



64HTTM Adult S-3XL MSRP 18.80

- 4.75 ounce
- 60% cotton/40% polyester
- Oxford 47% cotton & 53% polyester
- Dri-Power® Moisture Wicking Technology
- Odor protection
- Tagless label
- Garment protects against the sun with UPF 30+
- Raglan sleeves
- Front pouch pocket



TRI-BLEND LONG SLEEVE TEE

3075 Adult S-4XL MSRP 13.90
3076 Youth S-L MSRP 13.90

- 3.8 ounce, 50% polyester/38% cotton/12% rayon tri-blend knit
- Fits Loose to body
- Tear away label
- Set-in sleeves with rolled forward shoulder seam

LADIES LUX TRI-BLEND LONG SLEEVE TEE

3077 Ladies XS-3XL MSRP 13.90

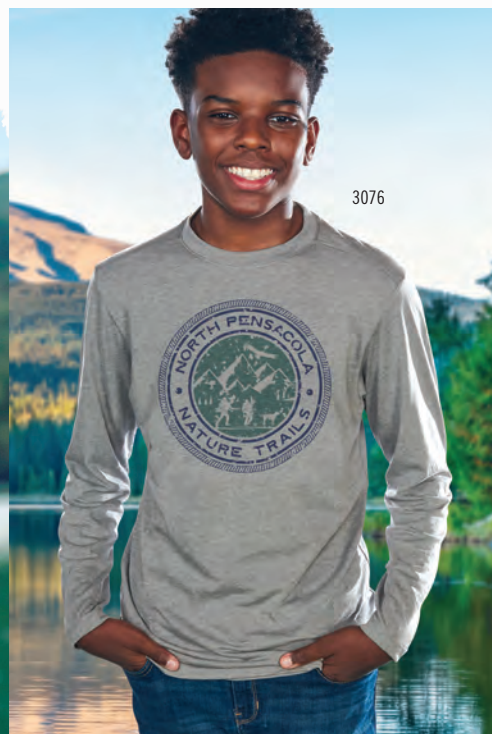
- 3.8 ounce, 50% polyester/38% cotton/12% rayon tri-blend knit
- Fits loose to body
- Tear away label
- Dropped shoulder sleeves for mobility and comfort
- Contoured bottom



Ladies Fit



3077



3076



Ladies Fit



GREY HEATHER 013
BLACK HEATHER K94
DARK GREEN HEATHER V97
MAROON HEATHER T09
NAVY HEATHER U22
RED HEATHER V96
ROYAL HEATHER U55



WHITE 005
STORM HEATHER 72N
ORANGE HEATHER V98
PURPLE HEATHER U86
KELLY HEATHER U10
DUSTY ROSE HEATHER 73N

Available in Ladies Only

TRI-BLEND TEE

3065	Adult	S-4XL	MSRP 9.90
3066	Youth	S-L	MSRP 9.90
3067	Ladies	XS-3XL	MSRP 9.90

- 3.8 ounce, 50% polyester/38% cotton/12% rayon tri-blend knit
- Ladies' fit on style 3067
- Tear away label
- Set-in sleeves with rolled forward shoulder seam



LADIES ADVOCATE HOODED TANK

222712 Ladies XS-2XL MSRP 29.40

- 4.4 ounce Shantung heather is 88% polyester/12% cotton fabric that gives a true vintage feel
- Tagless label
- Front pouch pocket



BLACK 080 FOREST 038 KELLY 030 LT GOLD 178 MAROON 045



NAVY 065 ORANGE 029 PURPLE 050 ROYAL 060 SCARLET 083



Hooded Racerback



NEW LADIES 7/8 LUX TIGHT

229394 Ladies S-2XL MSRP 40.00

229494 Girls S-XL MSRP 39.00

- Heavyweight 88% polyester/12% spandex knit
- 94% polyester/6% spandex maze mesh side inserts
- Fits close to body
- Tagless label
- Wide flat waistband for secure fit and comfort
- Inside drawcord
- Phone pocket on upper thigh on both legs
- Flatlock stitching provides comfort and helps prevent chafing



BLACK 080 CARBON J96 NAVY 065



Maze Mesh Side Inserts



Side Pockets





Ladies Fit



ATTAIN WICKING LONG SLEEVE TEE

2795	Adult	S-3XL	MSRP 10.80
		4XL in select colors	
2796	Youth	S-L	MSRP 10.80
2797	Ladies	XS-3XL	MSRP 10.80

- 100% polyester wicking knit with true hue technology® that helps prevent dye migration
- Longer length and bigger chest for added comfort
- Tear away label
- Raglan sleeves



*Maroon & Purple shades can vary by brand, please contact our Customer Care with questions
 *Safety Yellow is ANSI certified



Ladies Fit



ATTAIN RAGLAN SLEEVE TEE

2790	Adult	S-3XL	MSRP 8.30
		4XL-6XL in select colors	
2791	Youth	XXS-XL	MSRP 8.30
2792	Ladies	XS-3XL	MSRP 8.30
2793	Girls	S-L	MSRP 8.30

- 100% polyester wicking knit with true hue technology® that helps prevent dye migration
- Longer length and bigger chest for added comfort
- Tear away label
- Raglan sleeves

Available in 4XL-6XL Adult Sizes



*Maroon & Purple shades can vary by brand, please contact our Customer Care with questions
 *Safety Yellow is ANSI certified



JERZEES DRI-POWER® TEE

29M	Adult	S-5XL	MSRP	White	4.70
				Heathers	5.20
				Colors	5.40
29B	Youth	XS-XL	MSRP	White	4.70
				Heathers	5.20
				Colors	5.40

- 5.6 ounce, 50% cotton/50% polyester pre-shrunk jersey
- Oxford: 47% cotton/53% polyester
- Dri-Power® Moisture Wicking Technology
- Tear away label
- Seamless 1X1 rib-knit crew neck collar with two-needle coverstitching on front neck
- Shoulder-to-shoulder taping
- Quarter-turned to eliminate center crease
- Set-in sleeves





**TRUE
HUE**
COLOR THAT STAYS
WITHOUT THE BLEED

CORE
color choice



NEXGEN WICKING TEE

UPDATED FABRIC

UPDATED FIT

790	Adult	S-3XL	MSRP 7.50
		4XL in select colors	
791	Youth	XS-XL	MSRP 7.50
1790	Ladies	XS-3XL	MSRP 7.50

- 100% polyester wicking knit with true hue technology® that helps prevent dye migration
- Non-branded tagless label
- Set-in sleeves
- Safety Yellow is ANSI certified



Ladies Fit

Available in Adult 4XL



BLACK
080

NAVY
065

ROYAL
060

SCARLET
083

SILVER
099

WHITE
005

Available in Adult/Youth Only



OLIVE
039

TEAL
063

ELECTRIC ORANGE
79N

VEGAS GOLD
023

Available in
Adult Only



COYOTE
208

Available in
Adult/Ladies Only



COLUMBIA BLUE
089

DARK GREEN
035

GOLD
025

GRAPHITE
059

KELLY
030

MAROON
745

ORANGE
029

POWER BLUE
812

POWER PINK
809

PURPLE
747



SAFETY YELLOW*
243

*Safety Yellow is ANSI certified



FreeStyle™
SUBLIMATION



404M
pg. 62



Stimulus
Design



FREESTYLE SUBLIMATED TRAINING TEE



228180	Adult	S-4XL	MSRP 31.00
228280	Youth	S-XL	MSRP 29.00

- Dry-Excel™ 100% polyester smooth wicking knit
- Tagless label
- Set-in sleeves

15+ DESIGNS AVAILABLE



Hitter Design



Paramount Design



Gradient Design

CUSTOM APPAREL IN 5 EASY STEPS

Try FreeStyle today at augustasportswear.com



LADIES FREESTYLE SUBLIMATED TRAINING TEE



228380	Ladies	S-3XL	MSRP 31.00
228480	Girls	S-XL	MSRP 29.00

- Dry-Excel™ 100% polyester smooth wicking knit
- Tagless label
- Raglan sleeves

10+ DESIGNS AVAILABLE



Blockade Design



Vintage Football Replica Design



Ladies Fit



Ladies Fit

Warmth **2** / 10

Weight **Light**

HYBRID PULLOVER

401PSM Adult S-4XL MSRP 41.60

401PSX Ladies S-3XL MSRP 41.60

- Dri-Power® 88% polyester/12% spandex knit
- Dri-Power® 86% polyester/14% spandex 4-way stretch woven inserts
- Dri-Power® Moisture Wicking Technology
- Odor protection
- Tagless label
- Set-in sleeves



BLACK/
STEEL
BCS

STEALTH/
STEEL
SYV

NAVY/
STEEL
NYS

ROYAL/
STEEL
RYS



DARK GREEN/
STEEL
DNS

MAROON/
STEEL
BBA

TRUE RED/
STEEL
TUS

WHITE/
STEEL
WEL

HYBRID POLO

400PSM Adult S-4XL MSRP 37.60

400PSX Ladies S-3XL MSRP 37.60

- Dri-Power® 88% polyester/12% spandex knit
- 86% polyester/14% spandex 4-way stretch woven inserts
- Dri-Power® Moisture Wicking Technology
- Odor protection
- Tagless label
- Three-button placket with silicone buttons
- Set-in sleeves
- Dropped tail hem and side vents



BLACK/
STEEL
BCS

STEALTH/
STEEL
SYV

NAVY/
STEEL
NYS

ROYAL/
STEEL
RYS



DARK GREEN/
STEEL
DNS

MAROON/
STEEL
BBA

TRUE RED/
STEEL
TUS

WHITE/
STEEL
WEL



P405

Club
Design

Club
Design

**FREESTYLE
SUBLIMATED POLO**



228129	Adult	XS-5XL	MSRP 59.00
228329	Ladies	XS-3XL	MSRP 59.00

- Dry-Excel™ 4.1 ounce 100% polyester wicking horizontal textured stripe knit
- Ladies' fit on style 228329
- Tagless label
- Self-fabric collar
- Three matching buttons on Adult
- Four matching buttons on Ladies
- Set-in sleeves

5+ DESIGNS AVAILABLE



Gradient Design

**CUSTOM
APPAREL
IN 5 EASY
STEPS**

Try FreeStyle today at
augustasportswear.com





Honeycomb knit



NEW RECRUITER POLO

222569 Adult
S-3XL MSRP 36.00
222769 Ladies
XS-2XL MSRP 36.00

- Dry-Excel™ 4.8 ounce 100% polyester wicking honeycomb knit
- Garment protects against the sun with 50+ UPF
- Tagless label
- Low profile rib collar
- Two-button placket
- Raglan sleeves
- Side vents



BLACK/
WHITE
420

CARBON/
WHITE
FS2

DARK GREEN/
WHITE
438

MAROON/
WHITE
380



NAVY/
WHITE
301

ROYAL/
WHITE
280

SCARLET/
WHITE
408

WHITE/
CARBON
E94

Ladies Fit



220C



Rib-knit collar
with mesh
construction for
breathability



Ladies Fit



Honeycomb
knit



121C

NEW PRISM POLO**222568** Adult S-3XL MSRP 32.00

4XL in select colors

222768 Ladies XS-2XL MSRP 32.00

3XL in select colors

- Dry-Excel™ 4.8 ounce 100% polyester wicking honeycomb knit
- UV SafeShield protects against the sun with 50+ UPF
- Ladies' fit on 222768
- Tagless label
- Rib-knit collar with engineered mesh construction for breathability
- Three button placket
- Set-in sleeves with angled shoulder seam for mobility and comfort
- Side vents

Available in Adult 4XL & Ladies 3XL only

BLACK
080CARBON
J96NAVY
065ROYAL
060SCARLET
083WHITE
005COLUMBIA
BLUE
089CARDINAL
J36DARK GREEN
035KELLY
030LIME
096MAROON
745ORANGE
029PURPLE
747



Ladies Fit

DRI-POWER® ESSENTIAL POLO

7EPTUM	Adult	S-4XL	MSRP 31.20
7EPTUX	Ladies	S-2XL	MSRP 31.20

- 4.0 ounce 100% polyester
- Dri-Power® Moisture Wicking Technology
- Odor protection
- Tagless label
- Ribbed collar
- Three-button placket
- UPF 30+, provides protection from the sun
- Set-in sleeves



WHITE
WHI

TRUE
RED
TRR

STEALTH
SHL

ROYAL
ROY



NAVY
NAV

MAROON
MAR

BLACK
BLK

DARK
GREEN
DGR

Available in Adult only



COLLEGIATE
BLUE
LEG

CARDINAL
CRD

PURPLE
PUR



7EPTUM

7EPTUX

NEW MULTICAM TRUCKER SNAPBACK

M08 Adult One Size MSRP 14.40

- Nylon/cotton Ripstop Cordura
- Trucker mesh
- Durable
- Sublimated Multicam® Camo front panels and visor
- Mid-profile
- Pro-model
- Pro-stitched finish
- Snapback Adjustable



MULTICAM
BLACK/
BLACK



TROPIC/
LODEN



ARID/
TAN



MULTICAM
ORIGINAL/
BROWN

MULTICAM®

MultiCam® | Proven In Combat

It's the officially issued camo pattern of the US Army for all Afghanistan operations in 2010

NEW MULTICAM RIPSTOP CORDURA SNAPBACK

M35 Adult One Size MSRP 14.40

- Nylon/cotton Ripstop Cordura
- Durable
- Sublimated Multicam® Camo
- Mid-profile
- Pro-model
- Pro-stitched finish
- Snapback adjustable



TROPIC



MULTICAM
BLACK



ARID



MULTICAM
ORIGINAL



CAMO TRUCKER FLEXFIT

FLEXFIT
The One & Only Original

694M S/M (6 7/8 - 7 3/8) MSRP 16.90
L/XL (7 3/8 - 8)

- Polyester blend
- Spandex Trucker Mesh
- Sublimated Mossy Oak® Break-Up Country™ camo front panels
- Mid-profile
- Pro-model
- Curved visor
- Contrast transitional undervisor
- Pro-stitched finish
- Half piping
- Closed back



BREAK-UP COUNTRY/
BLACK/
BREAK-UP COUNTRY

BREAK-UP COUNTRY/
CHOCOLATE/
BREAK-UP COUNTRY

BREAK-UP COUNTRY/
KHAKI/
BREAK-UP COUNTRY

BREAK-UP COUNTRY/
ORANGE/
BREAK-UP COUNTRY

BREAK-UP COUNTRY/
WHITE/
BREAK-UP COUNTRY



DIGITAL CAMO HOOK-AND-LOOP ADJUSTABLE

695C Adult One Size MSRP 11.30

- Cotton
- Mid-profile, structured crown
- Curved visor
- Self-material undervisor
- Pro-stitched finish
- Sublimated digital camo crown and visor
- Hook-and-loop adjustable



SNOW

MILITARY GREEN

DESERT

ORANGE



VINTAGE CAMO SOFT TRUCKER SNAPBACK

637C Adult One Size MSRP 11.00

- Cotton/polyester
- Sublimated True Timber® camo front panels
- Soft trucker mesh back panels
- Low-profile, unstructured crown
- Curved visor
- Vintage green undervisor
- Pro-stitched finish
- Snapback adjustable



DEAD RIGHT THERE/
TAN

HTC GREEN/
TAN



VINTAGE "DIRTY" TRUCKER SNAPBACK

V37 Adult One Size MSRP 12.00

- Cotton
- Soft Trucker Mesh
- Double washed twill front panels
- Breathable
- Low-profile, unstructured crown
- Vintage green undervisor
- Pro-stitched finish
- Tan stitching
- Snapback adjustable



BLACK/
TAN/
BLACK

BROWN/
TAN/
BROWN

DARK GREEN/
TAN/
DARK GREEN

NAVY/
TAN/
NAVY

RED/
TAN/
RED





STRUCTURED CAMO
HOOK-AND-LOOP ADJUSTABLE



690C Adult One Size MSRP 9.50

- 100% polyester
- Breathable
- Mid-profile, structured crown
- Curved visor
- Self-material undervisor
- Pro-stitched finish
- Sublimated Mossy Oak® or True Timber® camo crown and visor
- Hook-and-loop adjustable



BREAK-UP COUNTRY



CONCEAL BROWN



MC2



XD3



DEAD RIGHT THERE



HTC GREEN



MANTA RAY BOONIE



1946B Adult One Size MSRP 26.30

- 100% polyester
- Extra breathable vent
- Sun protection
- Gill vents
- 3-inch wide brim
- Drawcord adjustable



ACTIVE SPORT MOSSY OAK® CAMO BOONIE



1948B Adult One Size MSRP 27.50

- 100% polyester
- Sublimated Mossy Oak® camo
- Breathable
- Sun protection
- 3-inch wide brim
- Drawcord adjustable



BREAK-UP COUNTRY

UNSTRUCTURED ACRYLIC/WOOL SNAPBACK

BRO5 Adult One Size MSRP 14.30

- Acrylic blend
- Full-profile, unstructured crown
- Side and back panel eyelets
- Self-material undervisor
- Snapback adjustable



PERFORATED HOOK-AND-LOOP ADJUSTABLE



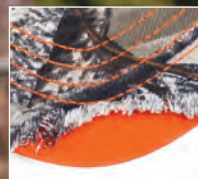
P747 Adult One Size MSRP 15.80

- Sublimated heathered, lightweight polyester blend
- Perforated back panels
- Breathable
- Low-profile, structured crown
- Black undervisor
- Pro-stitched finish
- Hook-and-loop adjustable
- A-Flex® stretch sweatband



PACIFIC HEADWEAR





Distressed Left Visor

FINAL SEASON
Inventory Only

DISTRESSED CAMO HOOK-AND-LOOP ADJUSTABLE



696C Adult One Size MSRP 10.70

- Cotton
- Mid-profile, structured crown
- Distressed visor with contrast accent
- Contrast undervisor
- Contrast eyelets
- Pro-stitched finish
- Contrast stitching
- Sublimated True Timber® camo crown and visor
- Hook-and-loop adjustable



CAMO SNAPBACK TRUCKER



108C Adult One Size MSRP 14.40

- Nylon blend
- Trucker Mesh
- Sublimated camo front panels
- Mid-profile
- Pro-model
- Curved visor
- Pro-stitched finish
- Snapback adjustable





ELEMENTS AGUA CAMO TRUCKER SNAPBACK



107C Adult One Size MSRP 14.40

- Cotton blend
- Trucker Mesh
- Sublimated Mossy Oak® Elements Agua™ Camo front panels
- Mid-profile
- Pro-model
- Curved visor
- Self-material undervisor
- Pro-stitched finish
- Snapback adjustable



ELEMENTS BLACK TIP/
LIGHT CHARCOAL



ELEMENTS BLUE FIN/
WHITE



ELEMENTS MANTA/
WHITE



ELEMENTS SPIN DRIFT/
WHITE



D-SERIES TRUCKER FLEXFIT

FLEXFIT®
The One & Only Original

8D8 XS (6 3/8 - 6 7/8) MSRP 19.70
S/M (6 7/8 - 7 3/8)
L/XL (7 3/8 - 8)

- Polyester blend
- Spandex Trucker Mesh
- Sublimated digital camo front panels
- Full-profile
- Front panel eyelets
- Flat bill
- Contrast undervisor
- Pro-stitched finish
- Half piping
- Closed back



SNOW/
WHITE/
SNOW



DESERT/
WHITE/
DESERT



ARMY/
WHITE/
ARMY



MILITARY GREEN/
WHITE/
MILITARY GREEN



BIO-WASHED BUCKLE STRAP ADJUSTABLE

396C Adult One Size MSRP 10.00

- Cotton
- Bio-washed fabric
- Low-profile, unstructured crown
- Self-material undervisor
- Pro-stitched finish
- Buckle strap adjustable



BLACK



CHARCOAL



SLATE



MELON



OLIVE



RUST



RUBY



CHOCOLATE



TRUCKER FLEXFIT

FLEXFIT
The One & Only Original



404M XS (6 3/8 - 6 7/8) MSRP 15.00
S/M (6 7/8 - 7 3/8)
L/XL (7 3/8 - 8)

- M3 performance
- Spandex trucker mesh
- Breathable
- Mid-profile
- Pro-model
- Contrast transitional undervisor
- Pro-stitched finish
- Contrast stitching on combo colors
- Half piping





NEW TRUCKER
FLEXFIT SNAPBACK

FLEXFIT®
The One & Only Original

110F Adult One Size MSRP 13.50

- Cotton blend
- Stretch trucker mesh
- Mid-profile
- Pro-model
- Curved visor
- Pro-stitched finish
- Snapback adjustable



NEW PERFORATED 5-PANEL
TRUCKER SNAPBACK

105P Adult One Size MSRP 12.50

- Cotton blend
- Trucker mesh
- Fully perforated front panel with contrast color underlay
- Mid-profile
- Pro-model
- Snapback adjustable





WOOL BLEND HEATHER SNAPBACK

P750 Adult One Size MSRP 15.00

- Acrylic blend
- Full-profile, structured crown
- Flat bill
- Pro-stitched finish
- Snapback adjustable



5-PANEL MESH OVERLAY TRUCKER SNAPBACK

P724 Adult One Size MSRP 9.50

- Cotton
- Trucker mesh
- Mesh overlay front panel
- Breathable
- Mid-profile
- Pro-model
- Curved visor
- Self-material undervisor
- Pro-stitched finish
- Snapback adjustable



HEATHER TRUCKER SNAPBACK

110C Adult One Size MSRP 14.50

- Polyester/rayon
- Trucker mesh
- Melange heather fabric
- Mid-profile
- Pro-model
- Curved visor
- Black or Grey undervisor
- Pro-stitched finish
- Snapback adjustable





CONTRAST STITCH TRUCKER SNAPBACK

104S Adult One Size MSRP 8.20

- Cotton blend
- Trucker mesh
- Mid-profile
- Pro-model
- Curved visor
- Pro-stitched finish
- Contrast stitching on combo colors
- Snapback adjustable



TRUCKER SNAPBACK

104C Adult One Size MSRP 8.20

- Cotton blend
- Trucker mesh
- Mid-profile
- Pro-model
- Curved visor
- Pro-stitched finish
- Contrast stitching on neon/graphite colorways
- Snapback adjustable





5-PANEL TRUCKER SNAPBACK

105C Adult One Size MSRP 8.20

- Cotton blend
- Trucker mesh
- Breathable
- Mid-profile
- Pro-model
- Curved visor
- Self-material undervisor
- Pro-stitched finish
- Snapback adjustable



NEW PREMIUM ACRYLIC/
WOOL BLEND FLEXFIT

FLEXFIT®
The One & Only Original

P812 S/M (6 7/8 - 7 3/8) MSRP 16.20
L/XL (7 3/8 - 8)

- Acrylic/Wool blend heathered fabric
- Full-profile
- Pro-model
- Shape-able flat bill
- Self-material undervisor
- Pro-stitched finish
- Closed back





6-PANEL ARCH TRUCKER SNAPBACK

P787 Adult One Size MSRP 10.80

- Cotton blend
- Trucker mesh
- Breathable
- Full-profile
- Arch crown
- Shape-able flat bill
- Self-material undervisor
- Pro-stitched finish
- Snapback adjustable



NEW HEATHER 6-PANEL ARCH TRUCKER SNAPBACK

P710 Adult One Size MSRP 13.00

- Polyester/rayon
- Trucker mesh
- Mélange fabric front panel
- Breathable
- Full-profile, arch crown
- Shape-able flat bill
- Self-material undervisor
- Pro-stitched finish
- Snapback adjustable







SLOUCHY BEANIE

SB02 Adult One Size MSRP 9.80

- Acrylic
- Relaxed, 11-inch slouch fit



WAFFLE KNIT CUFF BEANIE

627K Adult One Size MSRP 11.50

- Acrylic
- 3-inch cuff
- 8-inch fitted cut



PREMIUM CUFF BEANIE

650K Adult One Size MSRP 10.00

- Acrylic
- 3-inch cuff
- 8-inch fitted cut







HOMEcoming HEADBAND

223861 One Size MSRP 11.80

- Two layers of 100% acrylic knit



HOMEcoming BEANIE

223860 One Size MSRP 15.80

- Two layers of 100% acrylic knit
- Two-color pom pom accent



HOMEcoming SCARF

223862 73.5" x 8.5" MSRP 25.20

- Two layers of heavyweight 100% acrylic knit with reverse color pattern on back side
- Built-in hand warmer pockets
- Tassel detail
- Decoration access for easy embroidery



HOMEcoming GLOVE

223863 One Size MSRP 14.80

- Two layers of 100% acrylic knit with text-touch knit tips provide convenient touch screen capability
- Double layered cuffs with stretch





RIDGE HEADBAND



223821 One Size MSRP 16.60

- Dry-Excel™ performance fleece
- Sherpa Fleece
- Contoured shape to cover ears
- Reflective accent at front



BLACK
080

GRAPHITE
059

NAVY
065

ROYAL
060

SCARLET
083



CHILL FLEECE HEADBAND/EARBAND

6745 One Size MSRP 5.00

- Two layers of 100% polyester Chill Fleece
- Pill-free
- Ultra-soft



BLACK
080

RED
040

ROYAL
060

NAVY
065

DARK
GREEN
035

CHARCOAL
HEATHER
017



BOLSTER GLOVES



223820 Adult S/M, L/XL MSRP 23.20

- Omni-Sof™ microfleece
- Dry-Excel™ lightweight performance fleece
- 90% polyester/10% spandex knit with metallic dobby tech tips
- Self-fabric cuff
- Finger gussets provide snug fit for increased articulation



BLACK/
GRAPHITE
R17

BLACK/
NAVY
427

BLACK/
ROYAL
426

BLACK/
SCARLET
500



Coolcore is engineered to distribute moisture quickly throughout the garment. As the moisture spreads it will dry faster and keep you cool and comfortable.



Optional filter pocket



Optional elastic ear loops



NEW ENDEAVOR COOLCORE GAITER

222000 Adult 10-inch MSRP 8.00

- 92% polyester knitted mesh/8% elastane wicking knit with Coolcore technology®
- 87% polyester/13% elastane heathered wicking knit front panel with Cool Core technology®
- Flatlock stitching provides comfort and helps prevent chafing
- Filter pocket
- Hidden elastic ear loops
- UPF 25+, provides protection from the sun



BLACK
080

DARK
GREEN
035

GRAPHITE
059

NAVY
065

ROYAL
060

SCARLET
083



**NEW FREESTYLE SUBLIMATED
ON-FIELD GAITER**

228197 Adult 10-inch MSRP 13.50
228297 Youth 8-inch MSRP 13.50

- Dry-Excel™ 84% polyester/16% spandex knit
- Flatlock stitching provides comfort and helps prevent chafing

5+ DESIGNS AVAILABLE



104C
pg. 65



Digital
Camo
Design



Flag Design



Criss Cross
Stripe Design



Ombre
Design

Create Your Design On FreeStyle



**CUSTOM
MASKS &
GAITERS
IN 5 EASY
STEPS**

Try FreeStyle today at
augustasportswear.com



650K
pg. 69

Ombre
Design



NEW FREESTYLE SUBLIMATED MASK



228185 Adult One Size MSRP 10.00

228285 Youth One Size MSRP 10.00

- Dry-Excel™ 100% polyester wicking knit
- Fully sublimated front panel
- 3-ply with pocket for filter (filter not included)
- Two center front darts for a better fit around nose and chin
- Soft nylon/spandex ear loops for comfort and snug fit
- Non-medical
- Washable and reusable

15+ DESIGNS AVAILABLE



Faded Stripe
Design



Digital Camo
Design



Bold Stripe
Design



P787
pg. 67

Abstract
Design





M08
pg. 54



NEW STOCK SUBLIMATED GAITER



223849	Adult	19-inch	MSRP 14.00
223850	Youth	15-inch	MSRP 14.00

- Dry-Excel™ 84% polyester/16% spandex knit
- Flatlock stitching provides comfort and helps prevent chafing



Stars



Flag



NEW ON-FIELD GAITER



6838	Adult	10-inch	MSRP 7.00
6839	Youth	8-inch	MSRP 7.00

- 88% polyester/12% spandex knit
- Flatlock stitching provides comfort and helps prevent chafing



BLACK
080



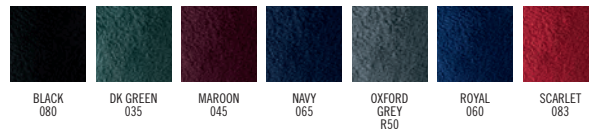
ROYAL
060



TAILGATE BLANKET

223856 54" W x 80" L MSRP 35.40

- 10.8 oz Micro-denier polyester knit
- Anti-pill
- Clean finished edge with matching coverstitching



STADIUM BLANKET

223851 50" W x 60" L MSRP 29.40

- Canyon™ fleece, 14.7 oz. spun polyester
- Anti-pill
- Matching overlock stitching



BLANKET STRAP

223052 One Size MSRP 3.40

- Barrel Strap





NEW EXPEDITION BACKPACK



229007 12"W x 17"H x 8"D

MSRP 50.00

- 100% polyester microcheck
- 900-denier heavyweight 100% polyester with PU coating on heather colorway
- 300-denier sides
- Heavyweight coated vinyl on bottom of bag
- Zippered top valuables pocket
- Two mesh side pockets
- Side zipper access for easy decoration and storage
- Web handle at top of backpack
- Adjustable padded shoulder straps
- Mesh padded back
- Media charging port
- Internal zippered mesh valuables pocket
- Internal neoprene sleeve for laptop or tablet



Side zipper for easy access to main compartment

Magnetic zippered roll top main compartment with two secure slide release buckles



BLACK/
BLACK/
GRAPHITE
E09

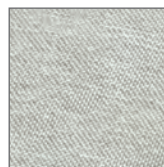
CARBON/
BLACK/
SCARLET
92E

GRAPHITE/
BLACK/
ROYAL
93E



NAVY/
NAVY/
ATHLETIC GREY
02S

SILVER HEATHER/
SILVER HEATHER/
ATHLETIC GREY
05S



Silver Heather



NEW EXPEDITION WAIST PACK



229011 10"W x 6"H x 6"D

MSRP 17.00

- 100% polyester microcheck
- 900-denier heavyweight 100% polyester with PU coating on heather colorway
- Wide zippered main compartment for easy decoration
- Zippered mesh phone pocket
- Adjustable waist strap with secure slide release buckle
- Mesh padded back
- Inside key hook and divider



BLACK/
BLACK
42S

CARBON/
AQUA
95E

CARBON HEATHER/
CORAL
96E



OLIVE/
BLACK
85E

SILVER HEATHER/
BLACK
40M



Silver Heather





Features zippered shoe compartment with side vents and external mesh pocket



Features zippered shoe compartment with mesh vent

229432

Detachable shoulder strap

Detachable shoulder strap

229431

Side handle

Padded shoulder straps transform to backpack



NEW RIVALRY DUFFEL BAG

229431 20"W x 10.5"H x 10.5"D MSRP 39.00

- 100% polyester microcheck
- 300-denier top panel
- Heavyweight coated vinyl on bottom of bag
- Zippered main compartment has large U-shaped opening with two zipper pulls
- Zippered front pocket with organizer and key hook
- Padded carry handle at top
- Adjustable and detachable shoulder strap with comfortable padded handle
- Internal zippered mesh valuables pocket

Silver Heather



BLACK/
BLACK
425

DARK GREEN/
BLACK
444

MAROON/
BLACK
388

NAVY/
CARBON
E81

SILVER HEATHER/
CARBON
01S



ORANGE/
BLACK
321

PURPLE/
BLACK
496

ROYAL/
BLACK
289

SCARLET/
BLACK
406



NEW RIVALRY BACKPACK DUFFEL BAG

229432 24"W x 11"H x 13"D MSRP 60.00

- 100% polyester microcheck
- Heavyweight coated vinyl on bottom of bag
- Zippered main compartment with two zipper pulls
- Zippered front pocket with organizer and key hook
- Zippered shoe compartment with mesh vent
- Padded carry handle at top
- Side handle



BLACK/
BLACK/
CARBON
E57

CARBON/
BLACK/
GRAPHITE
90E

CARBON/
BLACK/
SCARLET
92E



GRAPHITE/
BLACK/
ROYAL
93E

NAVY/
BLACK/
CARBON
03S



GEAR BAG



327870 10.5"W x 19"H x 10.5"D MSRP 31.80

- 100% polyester heavy denier with soft PVC backing and mesh venting side panels
- Drawstring top closure with rain flap
- ID holder on back
- Front zippered pocket with deep interior pouch holds shoes or accessories
- Backpack shoulder straps
- Versatile interior compartment features flexible divider, separating ventilated section from main compartment
- Inside main compartment large enough to fit Volleyball, Soccer and Basketballs



ATHLETIC
GOLD/
BLACK
597

BLACK/
BLACK
425

FOREST/
BLACK
434

LIME/
BLACK
530

MAROON/
BLACK
388



ORANGE/
BLACK
321

PURPLE/
BLACK
496

RASPBERRY/
BLACK
531

ROYAL/
BLACK
289

SCARLET/
BLACK
406





Two mesh side pockets

RIPSTOP DUFFEL BAG



1703

28"W x 14"H x 13"D

MSRP 27.80

- 600-denier polyester ripstop fabric with double PU coating
- Bottom panel is 450-denier polyester with double PU coating
- Zippered main compartment with two zipper pulls
- Zippered front pocket
- Black web handles with self-fabric handle wrapper, reinforced at stress points
- Adjustable and detachable shoulder strap



BLACK/
BLACK
425

RED/
BLACK
407

ROYAL/
BLACK
289



NAVY/
BLACK
308

GOLD/
BLACK
244

GRAPHITE/
BLACK
172

RIPSTOP BACKPACK



1710

12.5"W x 18.25"H x 6"D

MSRP 30.40

- 600-denier polyester with PVC coating
- 600-denier polyester ripstop front panels with double PU coating
- Zippered main compartment with covered zipper pulls
- Zippered front pocket with inside pen holders
- Interior cell phone holder and zippered pocket
- Handle at top of backpack
- Padded back for support and comfort
- Adjustable padded shoulder straps



BLACK/
BLACK
425

RED/
BLACK
407

ROYAL/
BLACK
289

NAVY/
BLACK
308



GOLD/
BLACK
244

PURPLE/
BLACK
496

DARK GREEN/
BLACK
444

GRAPHITE/
BLACK
172



DECORATION

We're your one-stop-shop to order a complete branded look from head to toe.



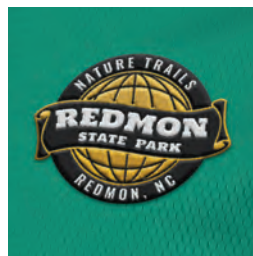


For an apparel customization quote
email sales@augustasportswear.com

EMBROIDERY

With Embroidery, it's all in the details. Augusta Sportswear's expert Embroidery department employs the latest technologies and fully controls every aspect of production. That way, you can be assured of superior products and the highest standards with every stitch, on every order.

- 12 piece order minimums (\$25 LTM charge)
- Templates are available in left chest and full-size options
- Logo digitization available (no charge for stitch count under 16k)





GENUINE LEATHER

Create a high-end artisanal look that leaves a lasting impression. Laser etching provides crisp, sharp lines on a variety of leather colors and styles.

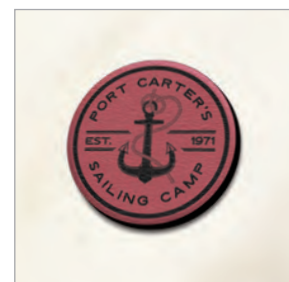
- 24 piece minimum
- 3 week turn from approval date



FAUX LEATHER

Take leather patches to the next level with over 20+ faux leather color options.

- 24 piece minimum
- 3 week turn from approval date





TRADITIONAL, REVERSE LASER & JERSEY APPLIQUÉ

Achieve virtually any look with your apparel with traditional appliqué. Our fantastic Full-Size Appliqué on the front or back of a garment creates a substantial look.

Create that vintage look with our Jersey Appliqué process or add real dimension with our Reverse Laser Appliqué technique. For even more dimension, consider adding an Etch design behind your Laser Appliqué. Cutting-edge technology at its best.

- 12 piece minimum (\$25 LTM charge)
- 1 & 2 color options available
- Choose from several stitching options



LASER ETCH & TONAL ETCH

The Tonal Etch technique gives a dimensional feel to your garment by using two (light and dark) contrasting tones. Our Single Tone Etch designs provide a more subtle tonal look or background. Designs available for Left Chest, Full-Size and even Jumbo Size.

- 12 piece minimum (\$25 LTM charge)
- Add a laser etch behind any traditional appliqué (*additional charge)
- Not recommended for: black, white or dark colors, heathered fabrics, blankets





SCREEN PRINT

Whether you want to say something simple or complex, Screen Print is a popular way to express yourself!

We're happy to work with you and your teams! We encourage you to consult our knowledgeable Customer Service Representatives about the latest specialty treatments, products and other trends in Screen Printing before finalizing project ideas.

- 24 piece minimum for all screen print orders
- Distressed designs are not recommended for garments with fabric patterns
- Metallic and specialty inks available at additional charge



PREMIUM HEAT TRANSFER

Premium Transfers are an upgrade on traditional film that looks and feels like screen print.

- 12 piece minimum (\$50 LTM charge)
- PMS color match available at \$50 per color





PACIFIC HEADWEAR™

DECORATION



WOVEN PATCH

The tight weave allows for more design detail, clean lines and a flatter appearance. Made with thinner thread and continuous stitching, woven patches achieve fine detail and flexibility to better shape to the crown.

- 10.00 MSRP
- 48 piece minimum
- 5 week turn from approval date



CUSTOM EMBROIDERY

Versatility and durability allow you to create a striking, bold look.

- 7.60 MSRP
- 12 piece minimum
- 2 week turn (stock) 3 week (Custom USA)
- Sizing variable depending upon location & cap style

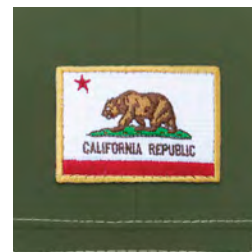




EMBROIDERED PATCH

Embroidered patches are created with traditional embroidery thread on high-quality twill for a classic, bold patch look.

- 10.00 MSRP
- 48 piece minimum
- 5 week turn from approval date



GENUINE LEATHER

Create a high-end artisanal look that leaves a lasting impression. Laser etching provides crisp, sharp lines on a variety of leather colors and styles.

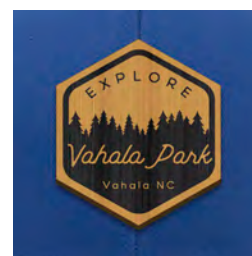
- 10.70 MSRP
- 24 piece minimum
- 3 week turn from approval date



NEW FAUX LEATHER

Take leather patches to the next level with over 20+ faux leather color options.

- 10.70 MSRP
- 24 piece minimum
- 3 week turn from approval date





NEW SILICONE PATCH

A terrific technique for detailed logos that add a subtle dimensional element.

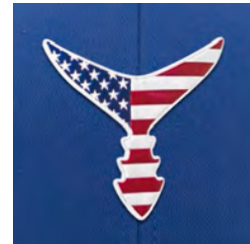
- 14.50 MSRP
- 50 piece minimum
- 4 week turn time from approval date



flexstyle®

Designs stand out with extreme detail, multiple textures and vibrant colors (including metallics). This new innovative technology creates fresh, modern decoration.

- 11.50 MSRP (\$75 set up)
- 24 piece minimum
- 4 week turn from approval date



SUBLIMATED PATCH

Digitally printed for a photo-realistic representation of your design. Achieve the color blending and color gradients you have struggled to get with other patch styles.

- 10.00 MSRP
- 48 piece minimum
- 4 week turn from approval date



Not able to find that perfect color combination?



Let Custom USA help!



Examples show style 904M
built in CustomUSA builder

We offer all of the colors, fabrics & choices you need

- Quick ship in 3 weeks
- 12 piece minimum per colorway & logo
- Selection, color & flexibility just the way you want it

Visit augustasportswear.com to get started

Augusta Sportswear Brands
P.O. Box 14939
Augusta, GA 30919-0939
augustasportswear.com

PRSRT STD
U.S. POSTAGE PAID
PERMIT NO. 665
AUGUSTA, GA 30901

Printed on Rolland EnviroPrint 100% Recycled Paper.
This paper contains 100% post-consumer fiber, is manufactured
using renewable energy - Biogas and processed chlorine free.
It is FSC® and Ancient Forest Friendly™ certified.

AUGUSTA
SPORTSWEAR BRANDS



PCF

